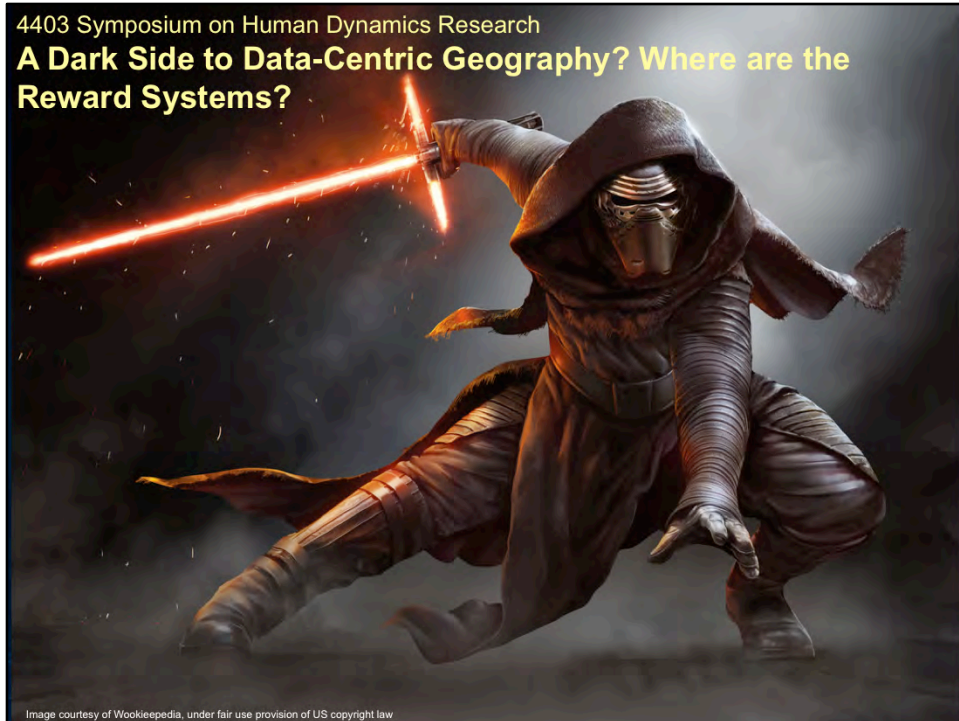


4403 Symposium on Human Dynamics Research

# A Dark Side to Data-Centric Geography? Where are the Reward Systems?



Image courtesy of Wookieepedia, under fair use provision of US copyright law



**4403 Symposium on Human Dynamics Research: A Dark Side to Data-Centric Geography? Where are the Reward Systems?**

**Panel**

**AAG Annual Meeting, San Francisco, April 1, 2016 - <http://dusk.geo.orst.edu/aag16-darkside.html>**

**Main Sponsors:** AAG GIScience & Systems, Cyberinfrastructure, and Remote Sensing Speciality Groups

**Related Sponsor:** AAG Public/Private Affinity Group

Note that you can rate this session in the AAG meeting app by clicking on the clipboard icon to the left of the session description

Panel will discuss an apparent disconnect in academia where skills in research computing and programming are still not properly rewarded, and what we can do about it. By not properly rewarding computing and coding, publishing of data, etc. in the same way that we reward traditional research, teaching and service, are we unwittingly driving a host of promising researchers away from the academic community?

Dan Goldberg, TAMU: "As someone coming to a love of geography following 3 degrees in computer science (bs, ms, and phd) this is my daily struggle toward tenure in a dept of geography. I routinely need to explain to my colleagues why computng is part of geography and how what I do is not simply widgetology."

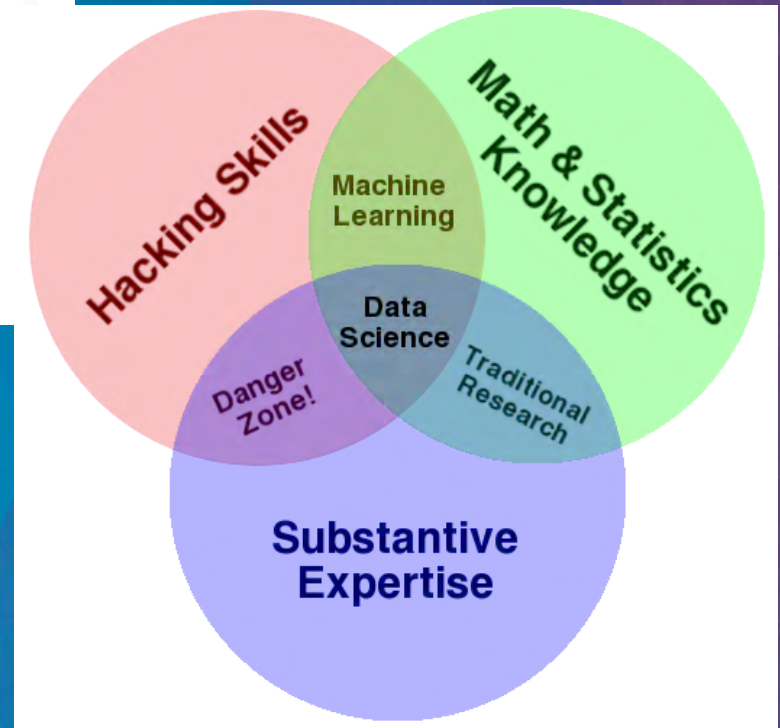
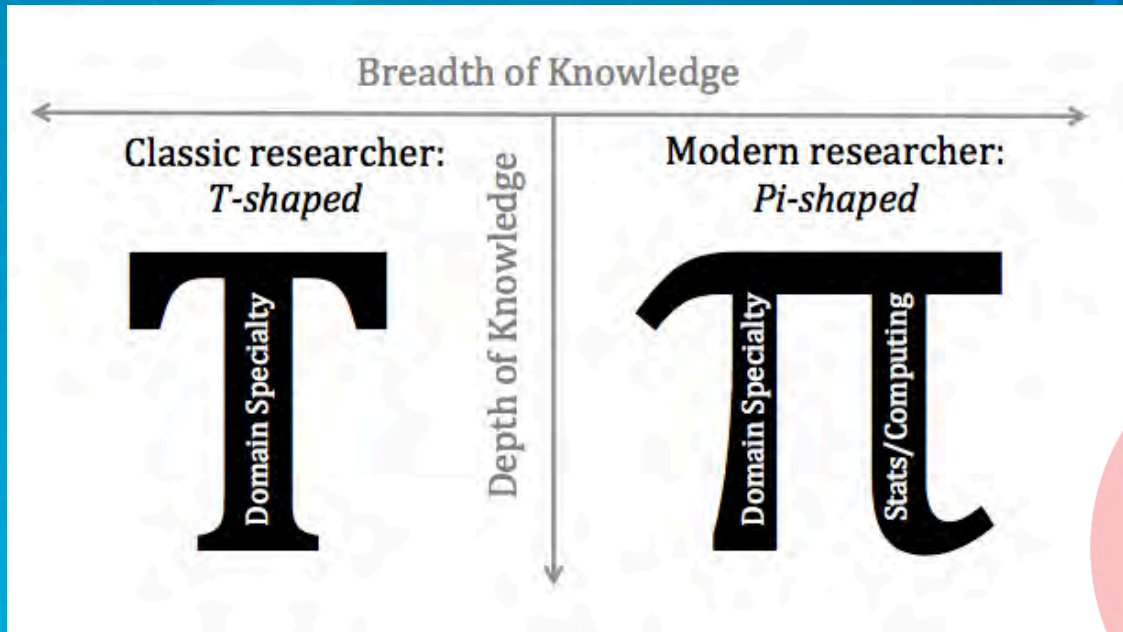
Similar themes touched on in opening plenary panel on Disruption in Higher Education and NRC Report on Transformative Research

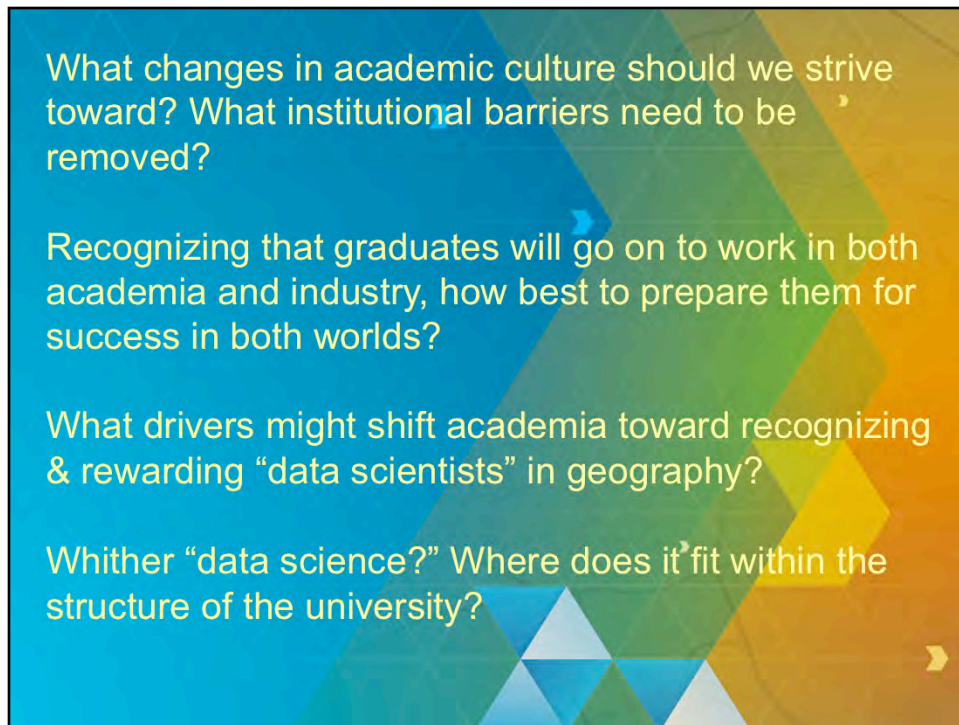


These “Yodas” wrote to me before the AAG to express their interest in the topic and encourage its discussion. Jerry Dobson was actually in the audience with us.



# Data Science and Data-Centric Geography





Diversity on the panel

Karen Kemp – part of a spatial sciences institute and not a formal department  
– equivalent to full professor

Renee Sieber – associate (mid-career) professor with joint appointment in the  
School of Environment & Department of Geography, McGill

Serge – full professor, School of Geographical Sciences & Urban Planning at  
ASU but offering separate degrees in those fields

Werner – full professor, Dept of Geography, UCSB, Dangermond Chair, but  
running the spatial@UCSB institute that serves the entire campus

Forrest – a doctoral student at Texas A&M, student of AAG president Sarah  
Bednarz, soon to defend and take up a tenure-track post at UMass-Amherst;  
dissertation deals in part with the topics of this panel

Matt – associate (mid-career) in Dept of geography at U. of Kentucky, visiting  
scholar at Harvard but in 2 imp't units there: center for geographical analysis  
and visiting prof in Graduate School of Design

From AAG Editorial board meeting of Monday: “A lot to be said for publishing  
to be part of the conversation in compelling topic rather than just ticking box  
toward tenure.”



# Thank You

Dawn Wright | Esri Chief Scientist

Email: [dwright@esri.com](mailto:dwright@esri.com)

Twitter: [@deepseadawn](https://twitter.com/deepseadawn)

[dusk.geo.orst.edu/aag16-darkside.html](http://dusk.geo.orst.edu/aag16-darkside.html)