



United Nations
Educational, Scientific and
Cultural Organization

Organisation
des Nations Unies
pour l'éducation
la science et la culture

Organización
de las Naciones Unidas
para la Educación
la Ciencia y la Cultura

Организация
Объединенных Наций по
вопросам образования
науки и культуры

• Intergovernmental
Oceanographic
Commission

• Commission
océanographique
intergouvernementale

• Comisión
Oceanográfica
Intergubernamental

• Межправительственная
океанографическая
комиссия

Caribbean Marine Atlas

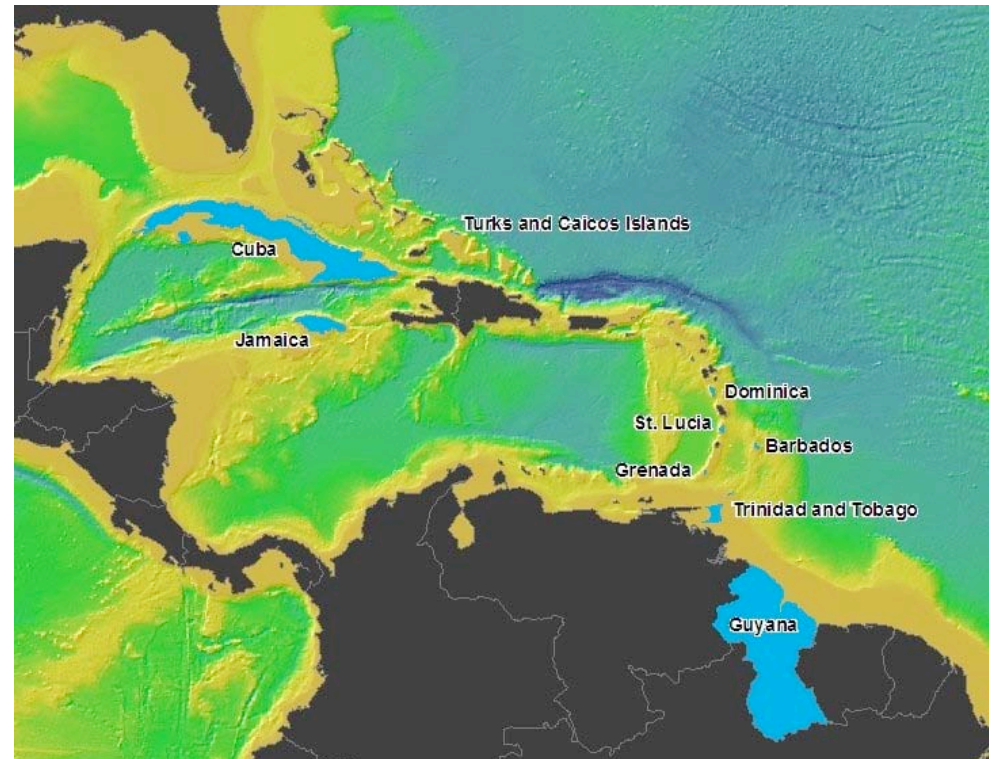
Greg Reed

on behalf of the Caribbean Marine Atlas team

ICAN Workshop on Federated Coastal Atlases, Copenhagen, 7-9 July 2008

Caribbean Marine Atlas

- Caribbean Marine Atlas (CMA) Pilot Project is a joint initiative of 9 countries in the Caribbean region
 - Barbados, Cuba, Dominica, Grenada, Guyana, Jamaica, Saint Lucia, Trinidad and Tobago, & Turks and Caicos Islands



Caribbean Marine Atlas

- The Project will identify, collect and organize available geo-spatial datasets into an atlas of environmental themes for the Caribbean region
- CMA will provide a support service to the integrated management of marine and coastal areas in the region.



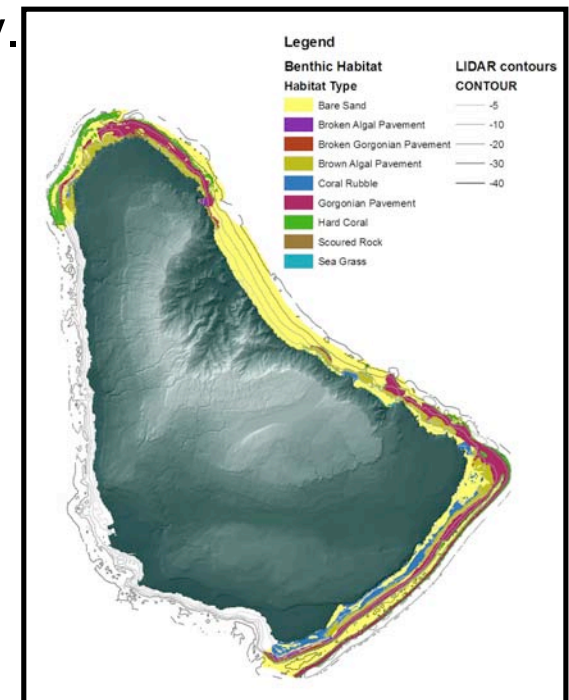
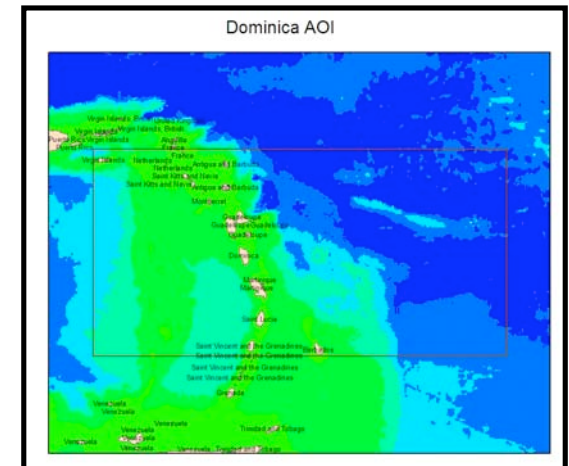
Pilot Project

- The pilot project has a duration of 12 months (October 2007 - October 2008)
- Jointly sponsored by the IODE and Integrated Coastal Area Management (ICAM) programmes of IOC.
- The Caribbean Marine Atlas is an activity developed within the framework of the Ocean Data and Information Network for the Caribbean and South America region (ODINCARSA)



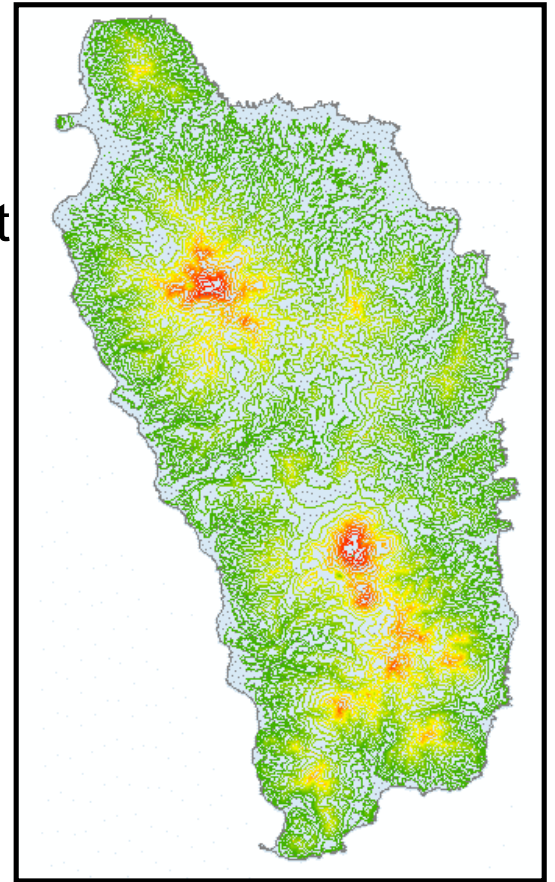
Data layers

- The data layers for the Atlas will be:
 - Regional Scale Data Layers - cover the complete Atlas area of interest.
 - National/Local Scale Data Layers - cover specific countries in the Caribbean and will be collected and organized by each country.
 - Virtual Data Layers - provided as links to online web map servers (WMS) producing dynamic maps that can be integrated into the Atlas.



CMA Workplan 2007-08

- Capacity building
 - Assess available resources and identify resource requirements
 - Training course on ocean data management (Feb 2008)
 - Workshop on data mining and assimilation (April 2008)
 - Training course on MapServer (June 2008)



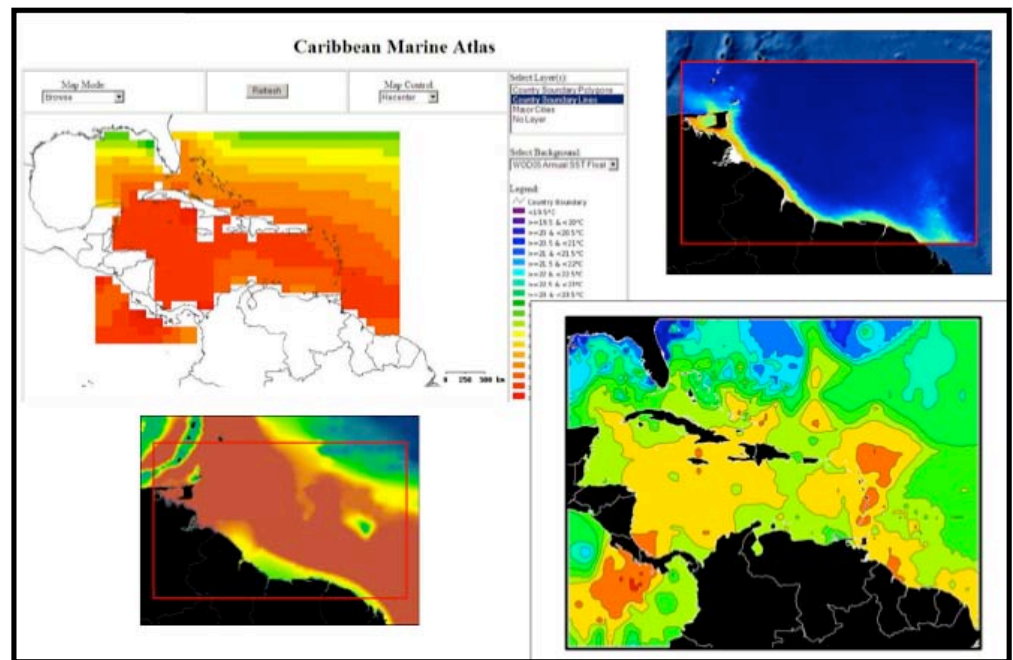
CMA Workplan 2007-08

- National & Regional Atlas Development
 - Identify priority issues and relevant data required
 - Locate data holdings at national level
 - Mine data, quality control, reformat and store data
- Regional Atlas Server Development
 - Establish central MapServer system
 - Import national and regional layers
- Product launch
 - Present to IOCARIBE-X in October 08
 - Demonstrate CMA at national and regional events
 - Extend atlas, include additional countries



Data mining and preparation

- Four groups
 - Group A: Base Map & Human Environment
 - Group B: Geosphere & Atmosphere
 - Group C: Hydrosphere
 - Group D: Biosphere



CMA and SDI

- CMA is working collaboratively with the regional communities to develop an infrastructure that can be part of a future Caribbean SDI
- CMA will support the collecting, maintaining, analyzing, presenting and disseminating spatial data
 - Similar aims as the SDI initiatives in the Caribbean



For further information on the CMA project see:

www.caribbeanmarineatlas.org

