

Atlas Development: Australia and Pacific

Greg Reed

Australia

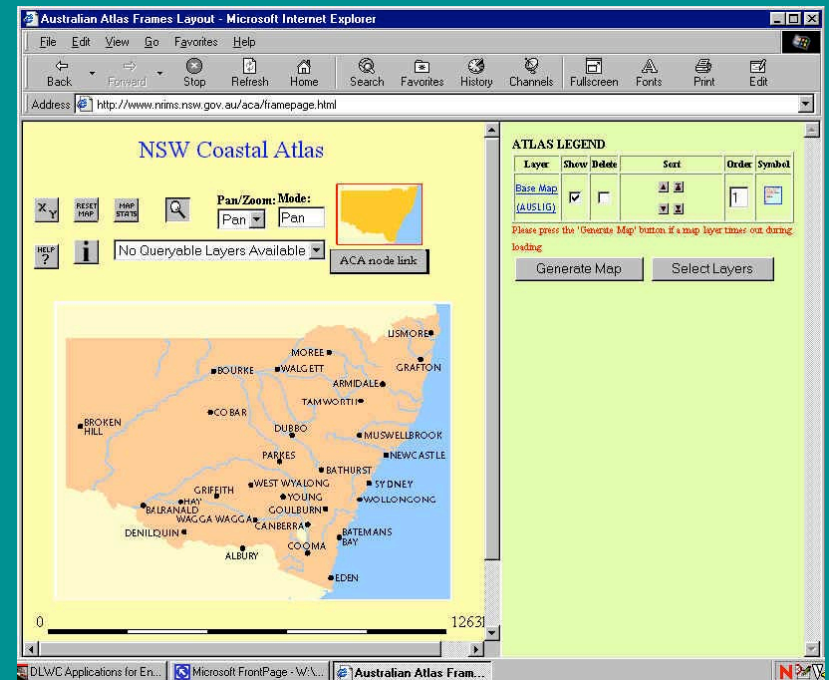
- Jurisdictions: Commonwealth and 8 States/Territories and Local Government
- Each level separate roles and authority, shared and overlapping responsibility for mapping

Australian Coastal Atlas

- The Australian Coastal Atlas set up as a network of Australian Government and State/Territory nodes using a variety of interactive mapping tools
- Nodes managed by the Commonwealth, States and Territories.
- Development began 1998

Australian Coastal Atlas

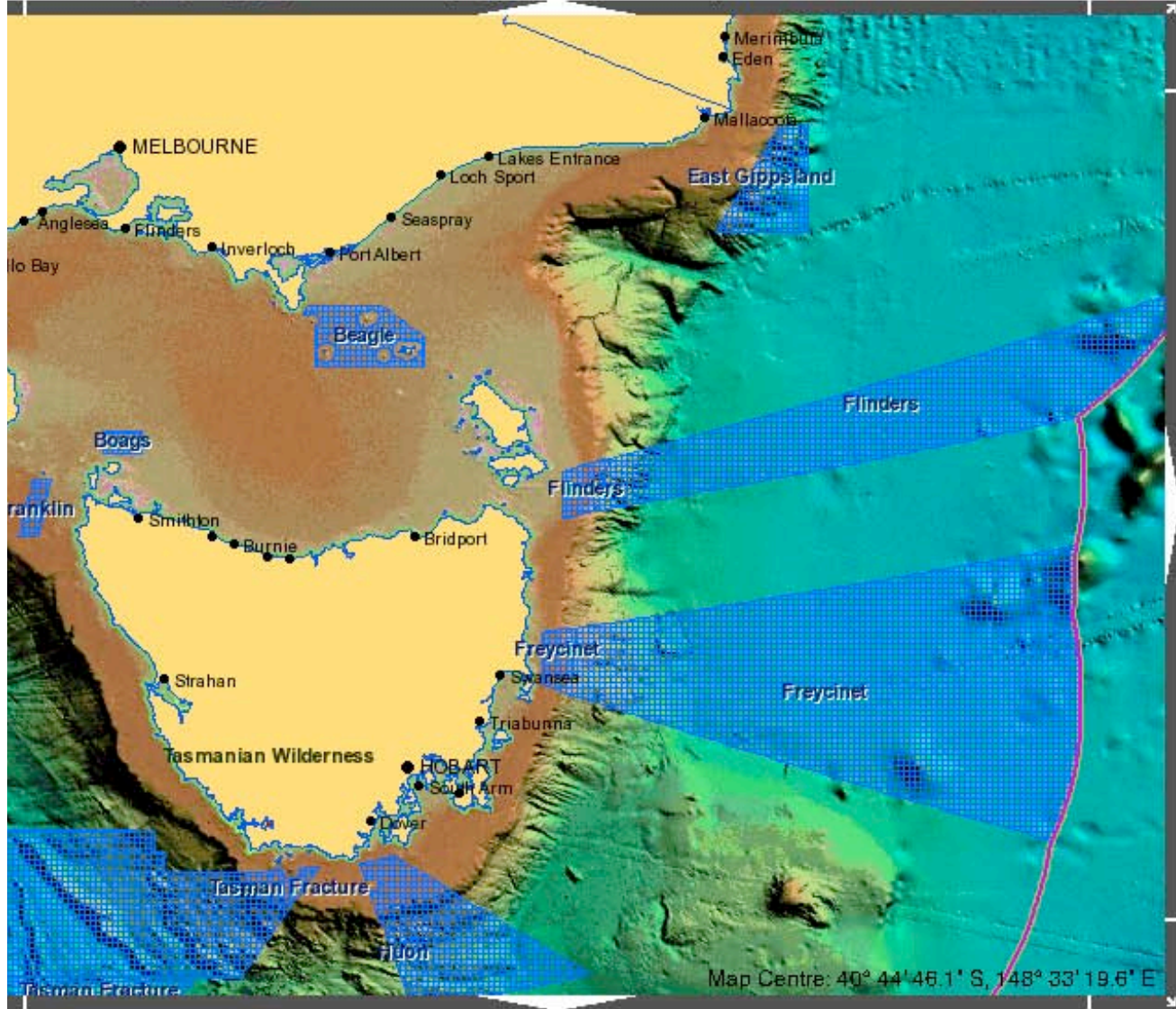
- Commonwealth node now incorporated into *Australian Natural Resources Atlas*
 - Focus on land use, no coastal data
- Some state nodes still operational
 - NSW Coastal Atlas



AMISIS

- Australian Marine Spatial Information System
- Developed by Geoscience Australia
 - Marine and Petroleum Division
 - contains over 80 layers of information including maritime boundaries, bathymetry, physical and environmental information, legal interests, fisheries and shipping
- More than coastal
 - Australia's EEZ and Antarctic region

Australian Marine Spatial Information System



Map Layers

[Feedback](#)

- Maritime Boundaries
- Coastal Framework
- Place Names
- Bathymetry
 - Bathymetry Image (GA)
 - Bathymetry test Image (GA)
 - Bathymetric Contours (GEBCO)
- Petroleum
- Offshore Minerals
- Fisheries
- Environment
- Legal Entities
- Geology
- Infrastructure
- Shipping
- Human Impact

Automatically Refresh Map

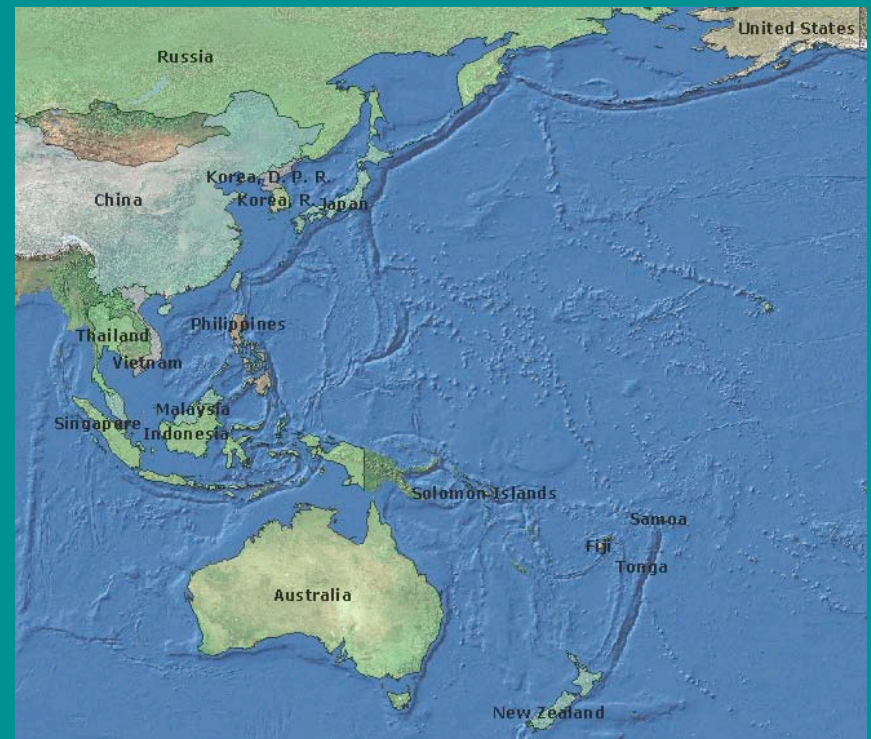
Notes:

Layer name: Layer names with blue coloured text denotes a link to metadata

Click folder to show or hide contents

Pacific region

- IOC Regional Sub-Commission for Western Pacific (WESTPAC)
- Diverse region
 - large states → small island states
- Pacific Is. states vulnerable to climate change



WESTPAC

- IODE establishing ODIN-WESTPAC
 - Project established to strengthen regional networking of marine related libraries and information resources in the Pacific region.
- Possible future atlas development projects

Pacific Island

- SOPAC (South Pacific Applied Geoscience Commission)
- Established MapServer installations in 14 Pacific Islands (EU funded)
- Possible area for atlas collaboration

