

Washington Coastal Atlas

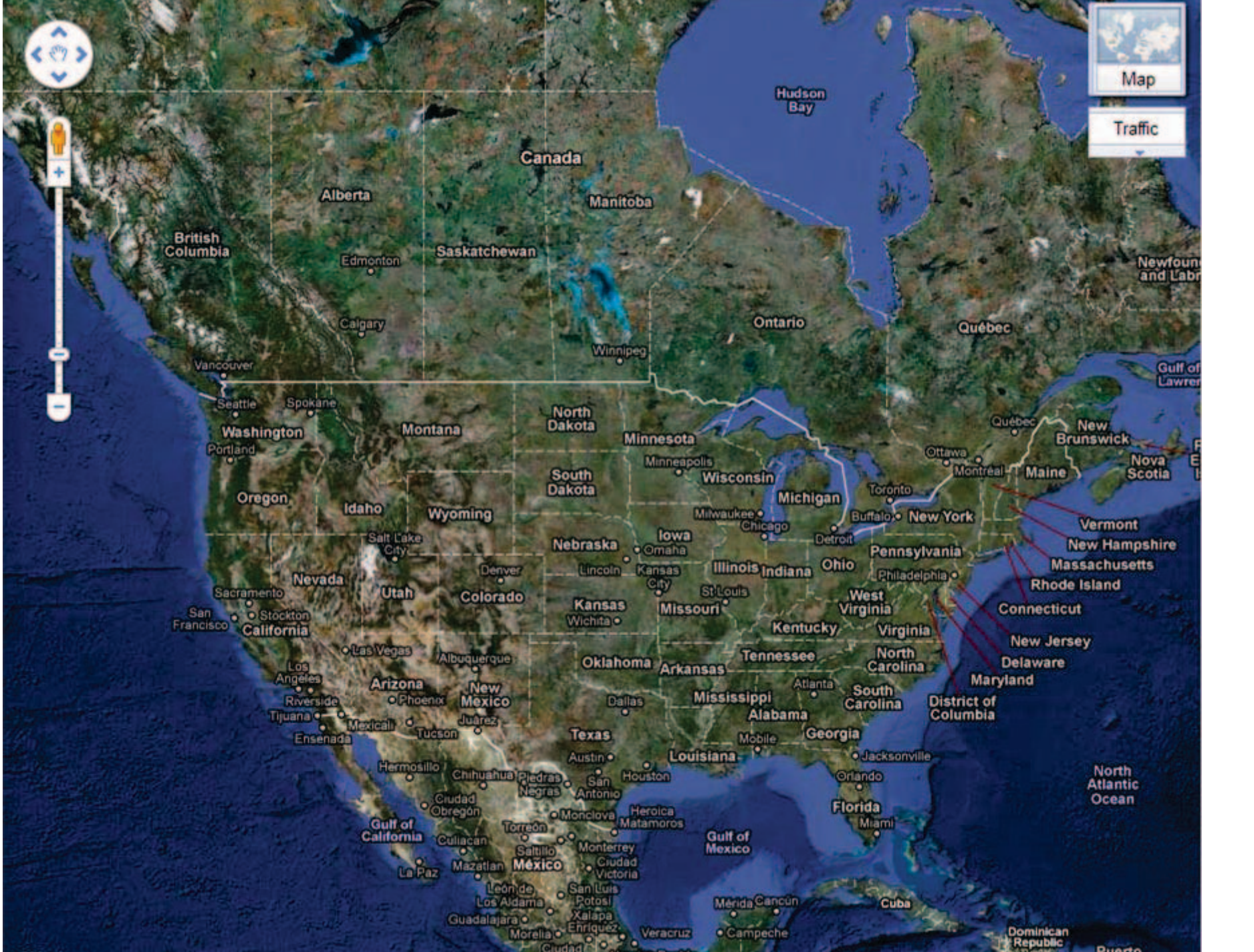
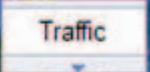
The screenshot shows the Washington Coastal Atlas website. At the top, it features the Department of Ecology logo and the text "Washington State Coastal Atlas". Navigation links for "Home", "Tools", and "Learn" are visible. The main content area is divided into three columns. The first column, "Find a public beach", includes a search box for "Enter beach or place" and a "Go" button. The second column, "Find beach closures", includes a search box for "Enter a county" and a "Go" button. The third column, "Explore coastal maps", includes a "Go" button and a link to "Visit the old atlas". A "News" section on the right contains a welcome message and a list of "Coming soon" updates: "View FEMA flood maps", "Improved shoreline photo viewer", and "Upgraded interactive map". Below this is a "Related Information" section with links to "Washington's Coastal Zone Management Program", "Shoreline Management", "BEACH Program", "Washington's Ocean Resources", "GIS data available from Ecology", "Marine Water Quality Monitoring", and "How to report a spill". A large banner image at the bottom shows children walking on a beach, with a text box overlay that says "Explore Washington State waters and beaches" and lists "Find a public beach near you", "Check for beach closures", and "Explore an interactive map". The ICAN logo and "International Coastal Atlas Network Member" text are at the bottom left.

ICAN Workshop 5: *Coastal Atlases as Engines for Coastal & Marine Spatial Planning*

31 August – 2 September, Oostende, Belgium

Kathy Taylor, Darby Veeck, Liz O’Dea, Tammy Pelletier







8/19/2006 5:04 PM



Columbia River Estuary

Stony Point, Willapa Bay

Southwest Coast



8/19/2006 3:38 PM



Grays Harbor

Southwest Coast

6/27/2006 10:26 AM

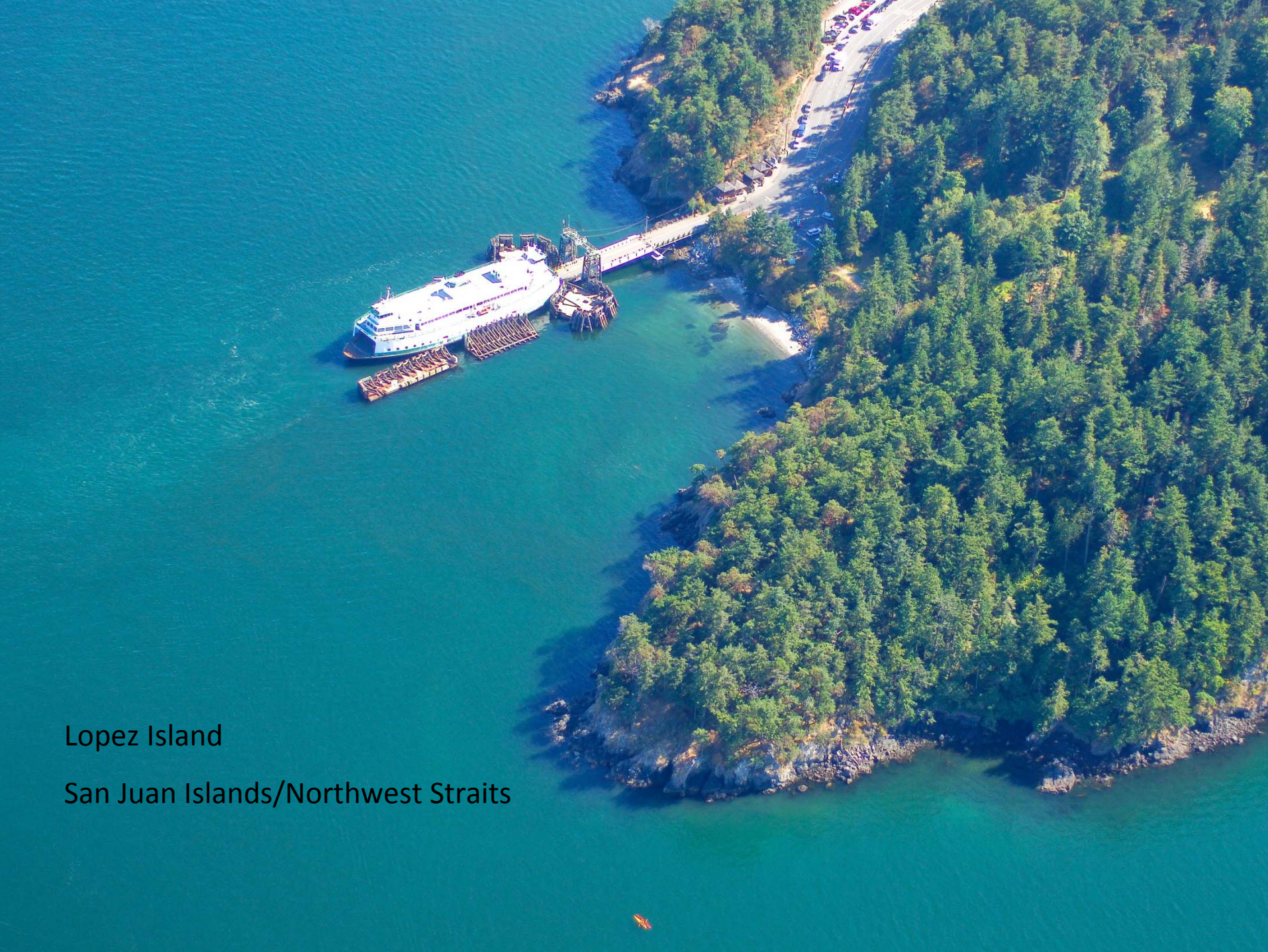
Tatoosh Island
Northwest Coast





La Push

Northwest Coast



Lopez Island

San Juan Islands/Northwest Straits

8/15/2006 2:58 PM

Flattop Island

San Juan Islands/Northwest Straits





Skagit Delta
North Puget Sound

7/26/2006 2:11 PM



Seattle
Central Puget Sound



Olympia

South Puget Sound

Washington Coastal Atlas

Purpose

- *To make relevant information easily available for use in coastal and shoreline resource planning and management.*



Examples

- Provide information to update local Shoreline Master Programs
- View current or historic aerial photos of project sites
- Gather information prior to field work or site visits
- Quickly prepare maps to inform a variety of audiences on specific topics
- View changes over time in the marine shoreline or in upland land cover

Target Audience

Primary Targets

- Local governments implementing WA CZM through local Shoreline Master Programs
- State government agencies with authority to regulate or manage activities on the shorelines and tidelands of Washington

Other important users

- Tribal governments
- Federal agencies
- Non-governmental organizations
- Outdoor recreation groups
- Real estate professionals
- Private citizens



“Old” Washington Coastal Atlas

Address http://www.ecy.wa.gov/programs/sea/sma/atlas_home.html

DEPARTMENT OF ECOLOGY
State of Washington

A-Z Index | Contact Us

Home | WATER | AIR | WASTE | CLEANUP | TOXIC HAZARDS | GREEN | About Us | Jobs

Programs | Services | Publications | Databases | Laws & Rules | Calendar | Public Records

Washington Coastal Atlas

COASTAL ATLAS HOME
Start Mapping
Tips for Using Site
Useful Links



Start Mapping
Use the Coastal Atlas to learn about Washington's marine shorelines and the land areas near Puget Sound, the outer coast, and the estuarine portion of the Columbia River. You can view aerial photographs of marine shorelines, locate different habitat types, physical features, see changes in land cover, and much more.

Tips for Using this Site
Learn how to navigate the Washington Coastal Atlas, view shoreline photos, use the mapping tools and create customized maps.

Useful Links
Links to coastal public access information, other coastal atlas sites and Department of Ecology partner web sites.

Coastal Atlas Partners



WASHINGTON STATE DEPARTMENT OF Natural Resources

NOAA Coastal Services Center
LINKING PEOPLE, INFORMATION, AND TECHNOLOGY

Access Washington®
Official State Government Web Site

Copyright © Washington State Department of Ecology
Contact Us | Privacy Notice | Site Info

Information for Ecology staff

Data Available

● Biological/Habitat Features

- Wetlands
- Historic Estuary Maps
- Pocket Estuaries
- Dunegrass, Surfgrass
- Kelp, Eelgrass
- Salt Marsh
- Low Marsh

● Physical Features

- Drift Cells
- Slope Stability
- Water Bodies (100k)
- Water Courses (100k)

● Regulated Features

- Commercial Shellfish
- Flood Zone
- Drinking Water Wells
- Category Water (5, 4C, 4B, 4A, 2, 1)

● Modifications

- Piers and Docks
- Shore Modification

● Jurisdictional Delineations

- Watershed (WRIA) Boundaries
- Sub Basins
- Counties
- Cities
- Township/Range/Section

● Transportation Features

- Major Roads
- Streets
- Railroads

● Background Imagery

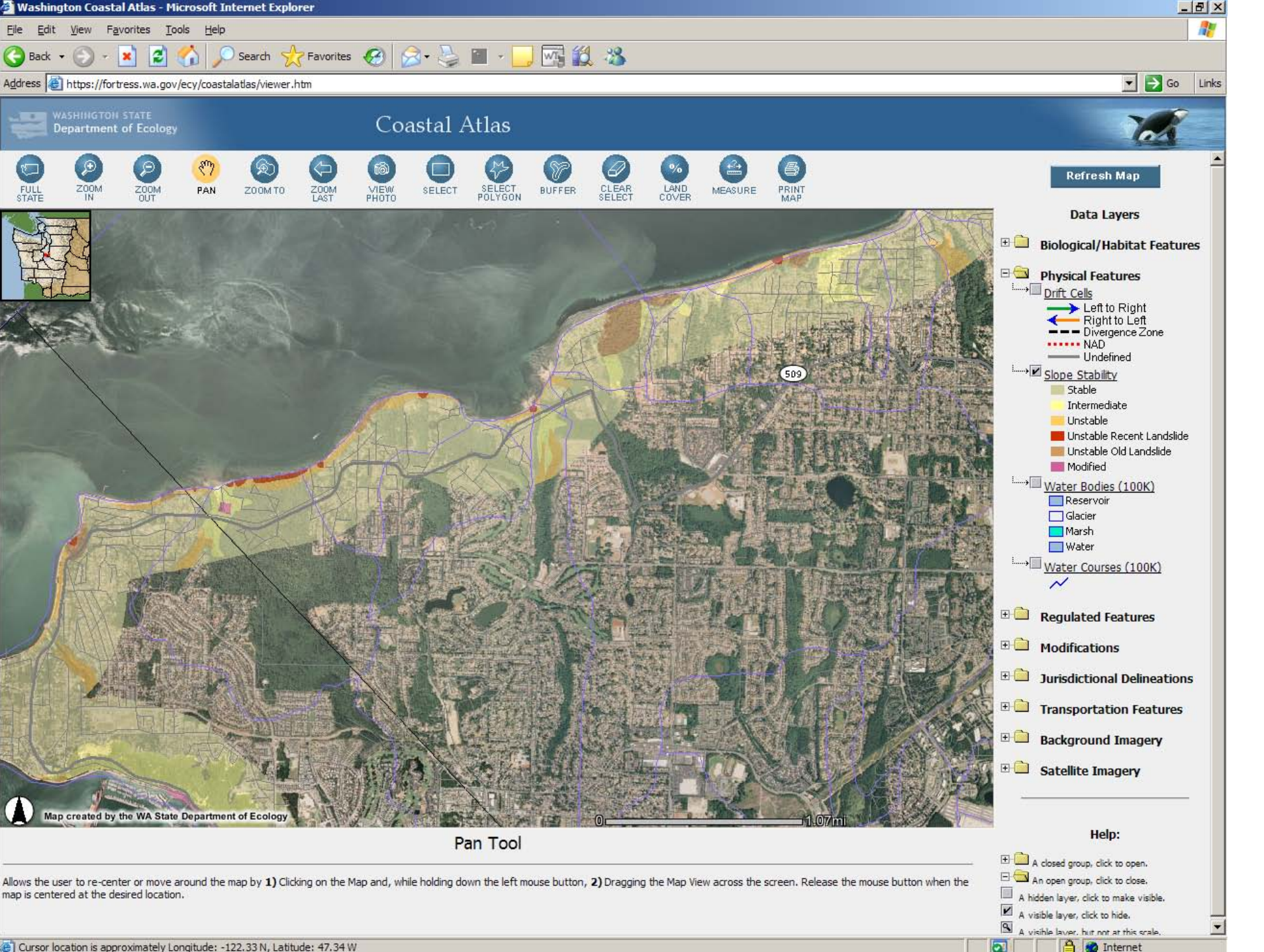
- USGS Topo Maps
- Aerial Imagery
- Hillshade
- Nautical Charts

● Satellite Imagery

- Land Use/Land Cover 1991, 1996, 2001, 2006

● Other Imagery

- Oblique shoreline photos 1976-77, 1992-'97, 2000-02, 2006-7



Oblique Aerial Photos of Shoreline

- Downloadable
- High Resolution
- Available for Multiple Years
- Available for all WA Marine Shorelines And Some Freshwater Shorelines in Eastern And Western Washington



Next ▲ Image



Next ▼ Image

Photo Reference: PIE0677_063

Date: on photo

Area: Ruston ASARCO Plant

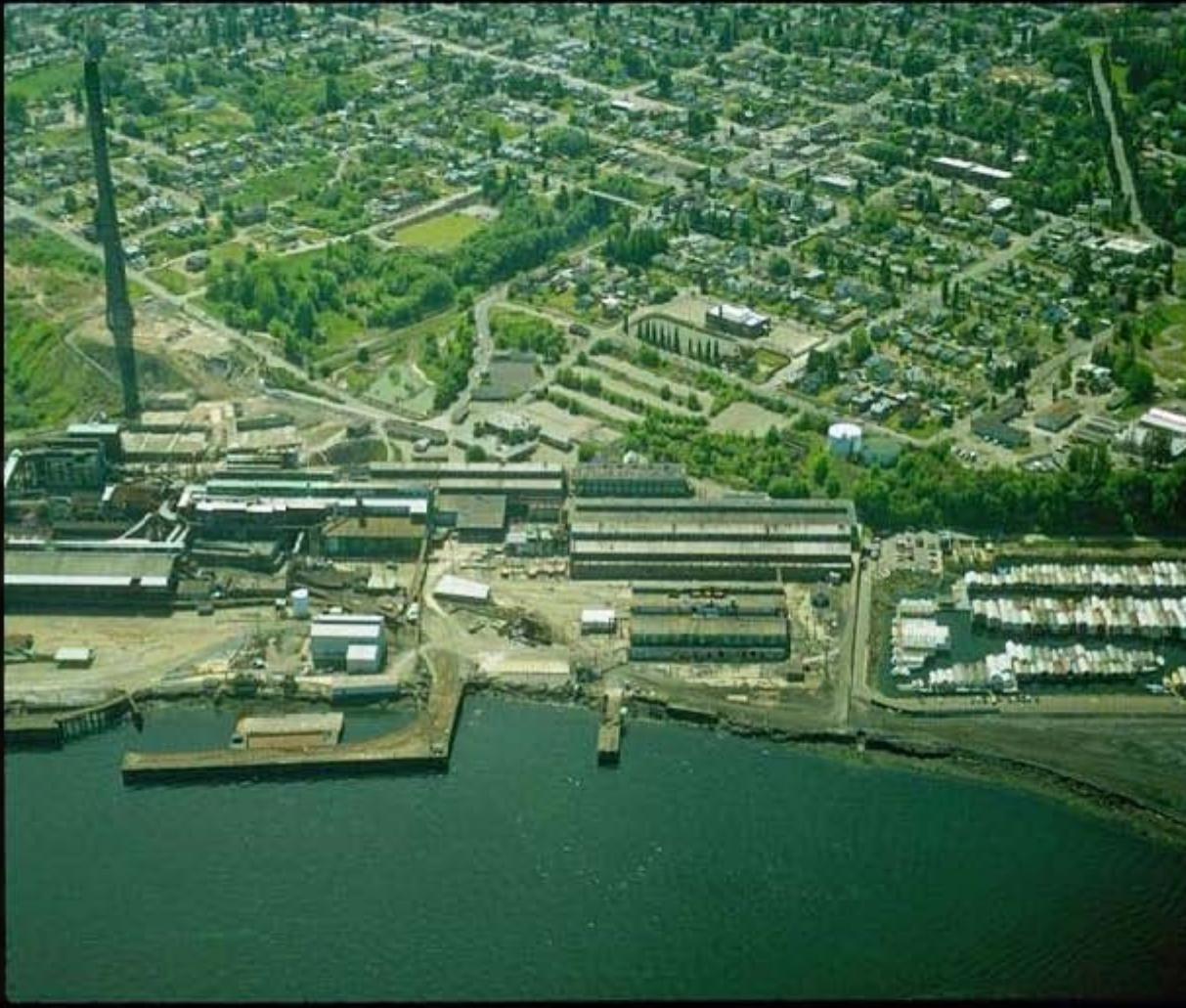
Download links for this photo:

[Low Resolution \(700 x 702 pixels, 618Kb\)](#)

[High Resolution \(2092 x 2118 pixels, 1131Kb\)](#)



Next ▲ Image



Next ▼ Image

Photo Reference: PIE0102

Date: 5/16/1992

Area: Asarco Smelter

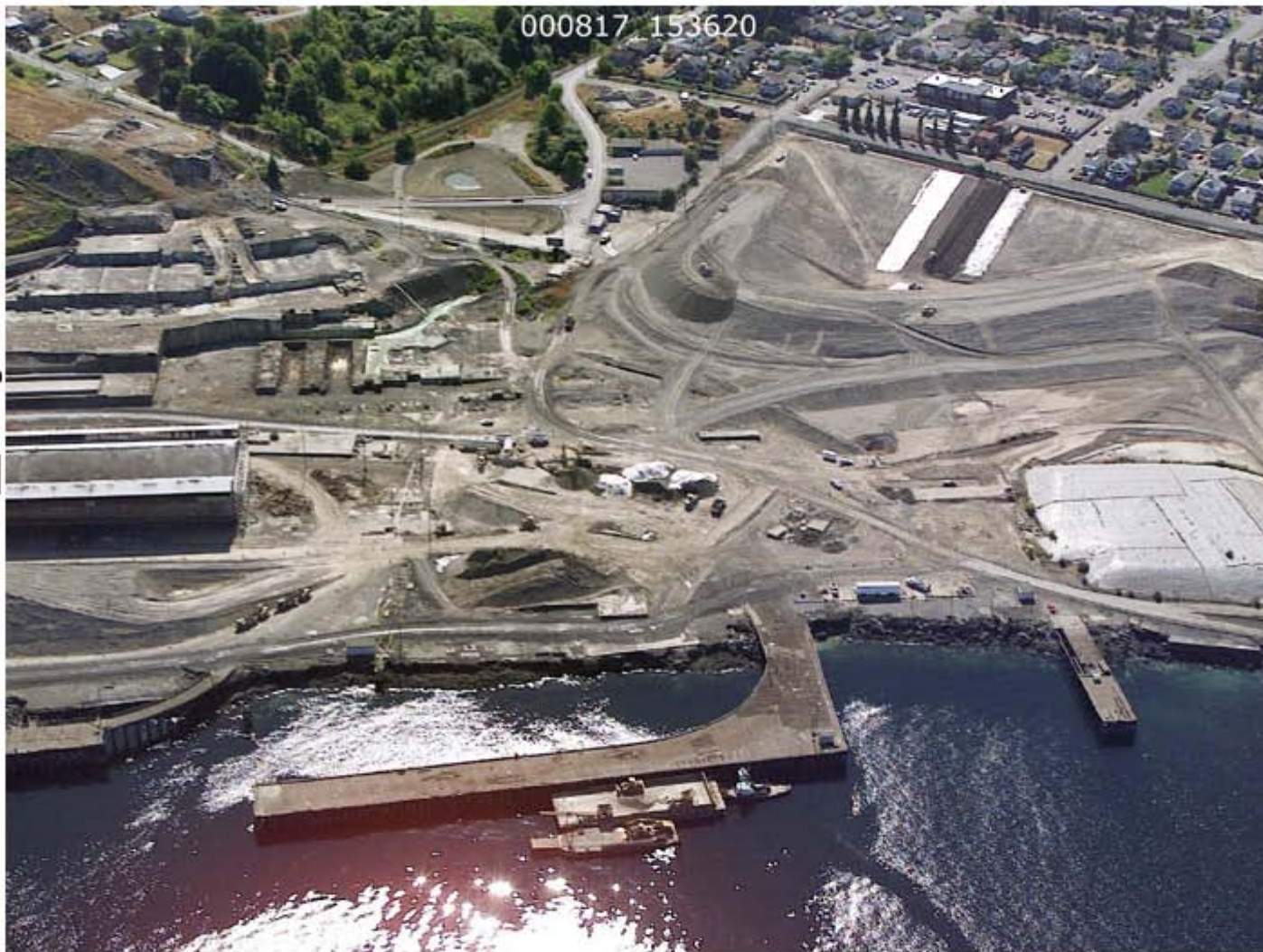
Download links for this photo:

[Low Resolution \(768 x 512 pixels, 92Kb\)](#)

*** High resolution image not available ***



000817_153620



Next  Image

Next  Image

Photo Reference: 000817_153620

Date: 8/17/2000

Download links for this photo:

[Low Resolution \(700 x 524 pixels, 185Kb\)](#)

[High Resolution \(2008 x 1504 pixels, 718Kb\)](#)



WASHINGTON STATE
Department of Ecology

Coastal Atlas



7/27/2006 1:40 PM

Next ▲ Image



Next ▼ Image

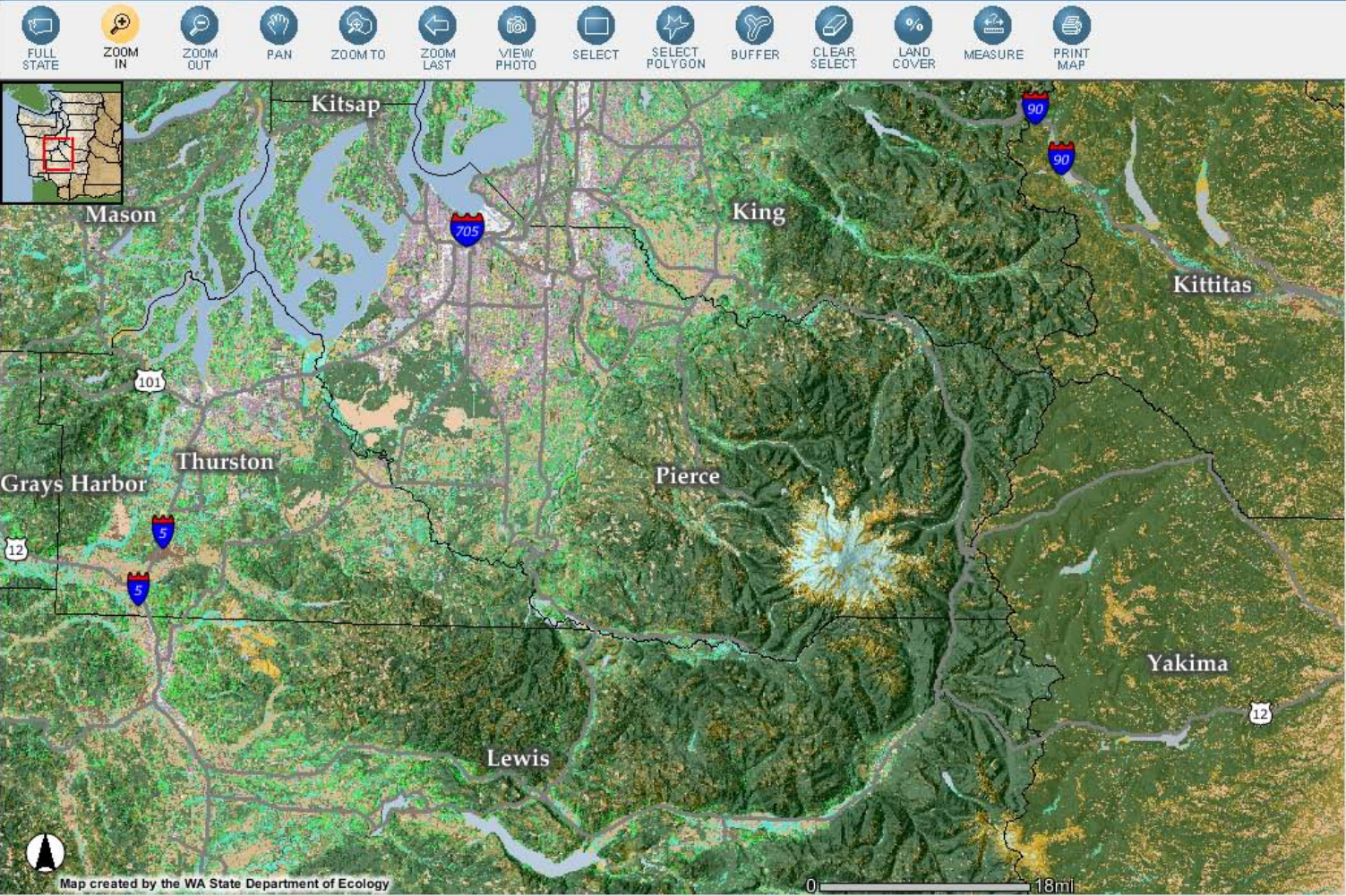
Photo Reference: 060727_10050

Date: 7/27/2006

Download links for this photo:

Land Cover Information

- NOAA Coastal Change Analysis Program Data
- Change in Forest Cover
- Change in Impervious Surface Cover



Refresh Map

Data Layers

- Biological/Habitat Features
- Physical Features
- Regulated Features
- Modifications
- Jurisdictional Delineations
- Transportation Features
- Background Imagery
- Satellite Imagery
 - Land Use/Land Cover 2006
 - Land Use/Land Cover 2001
 - Land Use/Land Cover 1996
 - Land Use/Land Cover 1991
- Unclassified (Cloud, Shadow, etc)
- High Intensity Developed
- Low Intensity Developed
- Cultivated Land
- Grassland
- Deciduous Forest
- Evergreen Forest
- Mixed Forest
- Scrub/Shrub
- Palustrine Wetland
- Estuarine Wetland
- Bare Land/Unconsolidated Shore
- Water
- Tundra
- Snow/Ice

Introduction

1. Choose Data Layers to display from right hand menu and then click **Refresh Map**. If layer is not visible, **Zoom In** until features are displayed.

2. Click on tools such as **Select**, **Land Cover**, or **View Photo** for further instructions and information in this window.



Help:

- A closed group, click to open.
- An open group, click to close.

WASHINGTON STATE Department of E

FULL STATE ZOOM IN Z



Report on Percent Cover of Forest Canopy

Impervious Surface Report

The percentage of forest canopy is a measure of the amount of area covered by woody vegetation greater than 6 meters (20 ft) in height. This includes:

- evergreen forest (e.g. Douglas fir, western red-cedar, western hemlock),
- deciduous forest (e.g. red alder, oak, big-leaf maple),
- mixed forest (e.g. evergreens and deciduous), and
- forested wetlands (e.g. sitka spruce).

The values reported reflect an average forest canopy across the area of land selected (sub-basin, county, or watershed (WRIA), because the amount of forest canopy cover is reported as a percentage of the total area.

The change in the percentage of forest canopy cover over time indicates how much forest was converted into other land cover types (reductions in percent forest cover) or the amount of reforestation of previously non-forested area (increases in forest percent forest cover).

The data used in this analysis have an overall accuracy of 85 percent. While this information is useful in identifying regional landscape patterns, it is not intended to be used to make specific land use decisions at a fine scale of individual parcels.

County Name	% Forest Canopy Cover 1991	% Forest Canopy Cover 1996	% Forest Canopy Cover 2001	% Change in Forest Canopy 1991-1996	% Change in Forest Canopy 1996-2001	% Change in Forest Canopy 1991-2001
Pierce	56.0	55.0	53.0	-2.0	-4.0	-5.0

Technical Information:

“New” Washington Coastal Atlas

All that was
in the “old:
Atlas, plus
much
more...

The screenshot shows the Washington State Coastal Atlas website. The header includes the Department of Ecology logo and navigation links for Home, Tools, and Learn. The main content area features three interactive panels: 'Find a public beach' with a search box and 'Go' button; 'Find beach closures' with a search box and 'Go' button; and 'Explore coastal maps' with a 'Go' button. A large banner at the bottom promotes exploring Washington State waters and beaches, with links to find public beaches, check for closures, and explore an interactive map. A right-hand sidebar contains a 'News' section with a welcome message and a 'Coming soon' list, and a 'Related Information' section with various program links. The ICGAN logo is visible at the bottom left of the page.

DEPARTMENT OF ECOLOGY
State of Washington

Washington State Coastal Atlas

Home Tools Learn

Find a public beach
Enter beach or place
or go to page >

Find beach closures
Enter a county
or go to page >

Explore coastal maps
Visit the old atlas

Explore Washington State waters and beaches
Find a public beach near you
Check for beach closures
Explore an interactive map

News
Welcome to the new, improved Washington Coastal Atlas!
Coming soon:
• View FEMA flood maps
• Improved shoreline photo viewer
• Upgraded interactive map

Related Information
Washington's Coastal Zone Management Program
Shoreline Management
BEACH Program
Washington's Ocean Resources
GIS data available from Ecology
Marine Water Quality Monitoring
How to report a spill

ICGAN International Coastal Atlas Network Member

Actively incorporating what we know about Coastal Atlas users

- current knowledge of target user groups
- professional design expertise (Tammy)

Coastal Atlas personas

Pat the Shoreline Planner



Job Title: Associate Planner, City of Bainbridge Island, Puget Sound

Job Duties:

- **Functions as a member of the long range planning and natural resources team** and works closely with the Director, Planning Manager, other City staff, and community organizations to guide and help coordinate shoreline and natural resources planning, complex shoreline projects, and other day-to-day planning activities.
- **Coordinates shoreline restoration and conservation efforts**, including management of shoreline restoration projects.
- **Facilitates and performs planning department policy** and code development functions.
- **Prepares reports and presents findings** and recommendations.
- **Coordinates and performs technical planning functions**, including: meeting with development professionals on land use applications; environmental policy review, regulation and code interpretation; policy, regulation and ordinance development; and review and analyze land use/building applications; and other duties as assigned.

Technical Knowledge and Skills:

- **Professional understanding of marine shoreline ecological functions and processes** and the ability to work effectively with scientists and consultants to develop a shoreline inventory and analysis report which is intended to characterize current shoreline conditions; evaluate existing functions and values of the shoreline resources; analyze cumulative impacts, and write an ecosystem-based management program;
- **Facilitate the public and decision makers in understanding shoreline processes and functions**, legal requirements, and management challenges;
- **Technical knowledge in planning theory** as well as knowledge and understanding of the legal administrative rules, including the relationship between the **Shoreline Management Act (SMA) and the Growth Management Act (GMA), and Critical Areas Ordinances;**
- Moderate to advanced abilities with ArcGIS, Microsoft Excel, and Microsoft Word software.

Educational level:

Bachelor's degrees in planning, natural resources and environmental studies and work experience with a local government in Washington State.

Technology

Past

- ESRI ArcIMS 9.2
ArcSDE 9.3: Data,
simplified metadata
- MS SQL Server 2005
- IIS Server,
Apache Tomcat 5.5
- ASP.NET v2.0 (Coastal
Image Viewer & Land
Cover Tool)



Current

- ESRI ArcGIS Server 10.0
- ASP.NET 4.0
- ESRI Javascript API

2011 Coastal Atlas Update

- Update user interface
- Improved photo viewer
- Add beach water quality & beach closure info
- Add FEMA flood maps
- Add shoreline public access information
- Update map tools on main map

“New” Washington Coastal Atlas



Find a public beach

[or go to page >](#)



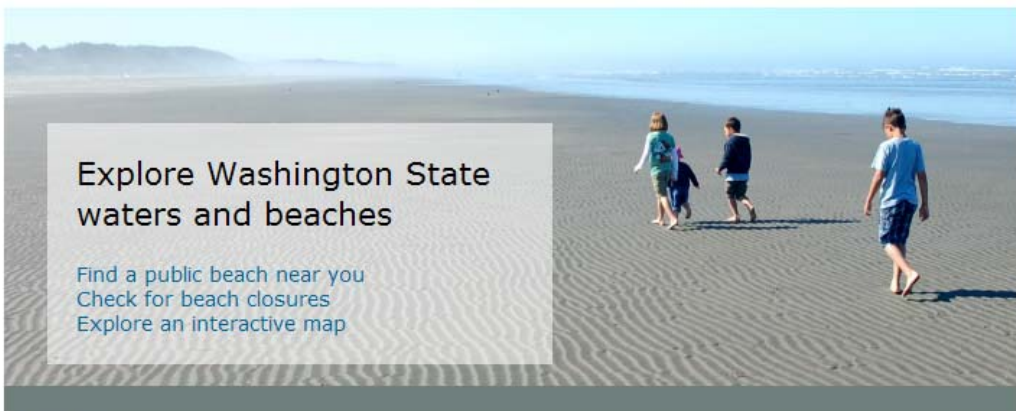
Find beach closures

[or go to page >](#)



Explore coastal maps

Visit the old atlas



Explore Washington State waters and beaches

- [Find a public beach near you](#)
- [Check for beach closures](#)
- [Explore an interactive map](#)

News

Welcome to the new, improved Washington Coastal Atlas!

Coming soon:

- View FEMA flood maps
- Improved shoreline photo viewer
- Upgraded interactive map

Related Information

- [Washington's Coastal Zone Management Program](#)
- [Shoreline Management](#)
- [BEACH Program](#)
- [Washington's Ocean Resources](#)
- [GIS data available from Ecology](#)
- [Marine Water Quality Monitoring](#)
- [How to report a spill](#)



Find a public beach

[or go to page >](#)



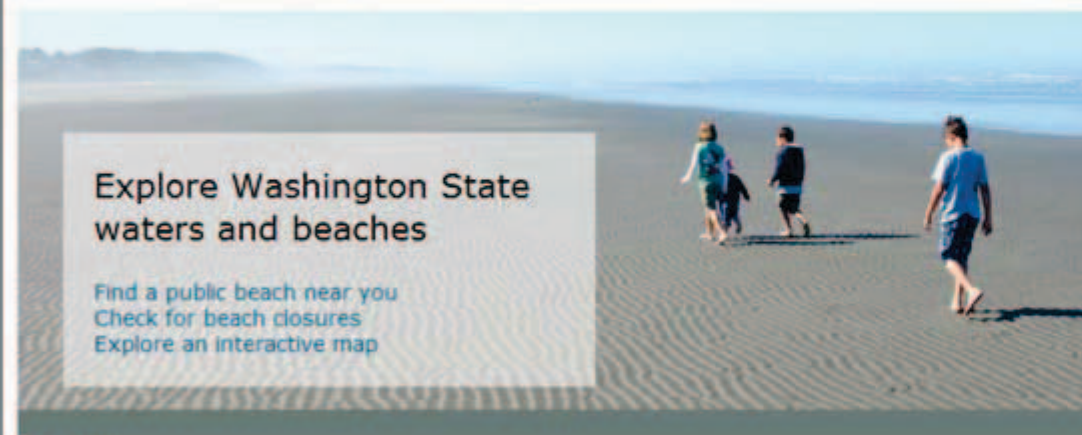
Find beach closures

[or go to page >](#)



Explore coastal maps

Visit the old atlas



Explore Washington State waters and beaches

[Find a public beach near you](#)
[Check for beach closures](#)
[Explore an interactive map](#)

News

Welcome to the new, Washington Coastal Atlas

Coming soon:

- View FEMA flood maps
- Improved shoreline management
- Upgraded interactive maps

Related Information

- Washington's Coastal Management Program
- Shoreline Management BEACH Program
- Washington's Ocean GIS data available from
- Marine Water Quality
- How to report a spill

PUGET SOUND

Exploring

- Tour
- Beaches
- Bluffs & Spits
- Species

Living

- Buying Property
- Building
- Homeowner Tips
- Laws & Permits

OUTER COAST

Sights

- Beaches
- Animals
- Plants

Hazards

- Erosion
- Waves
- Storms

WASHINGTON'S COAST

Washington State Department of Ecology

Hazards

Sights

Home

WAVES
STORMS

EROSION
What's
happening
Ocean Shores
Cape
Disappointment
Washaway
Beach
Westport
Leadbetter
Point
dams
jetties



Erosion



SW Washington Coastal Erosion Study

What's happening on the coast



Washaway Beach

the most rapidly eroding spot on the US west coast



Westport

storm waves punch through a park



Cape Disappointment

waves carve into a campground



Ocean Shores

erosion threatens condominiums



Leadbetter Point

a shifting sand spit



Jetties

caused beaches to grow and possibly erode



Dams

have reduced beach sand supply



Home | Sights | Hazards

Department of Ecology

Puget Sound Shorelines

[Home](#)[Exploring](#)[Living](#)[Site Map](#)

Species

Salmon
Surf Smelt
Sand Lance
Kelp
Eelgrass
Native Plants
Madrone
Maple
Bald Eagle
Scoter
Shorebird
Heron
Guillemot
Geoduck
Harbor Seal

Sound Species

Over 211 species of fish frequent the Sound. Many species use shoreline areas for breeding, migration and development.

- Salmon
- Surf Smelt
- Sand Lance



Plants and seaweed provide food and shelter.



■ Eelgrass



■ Bull Kelp



■ Native Plants



■ Madrone



■ Maple

Many birds use the shoreline as a migratory path. Others live along the Sound year round.

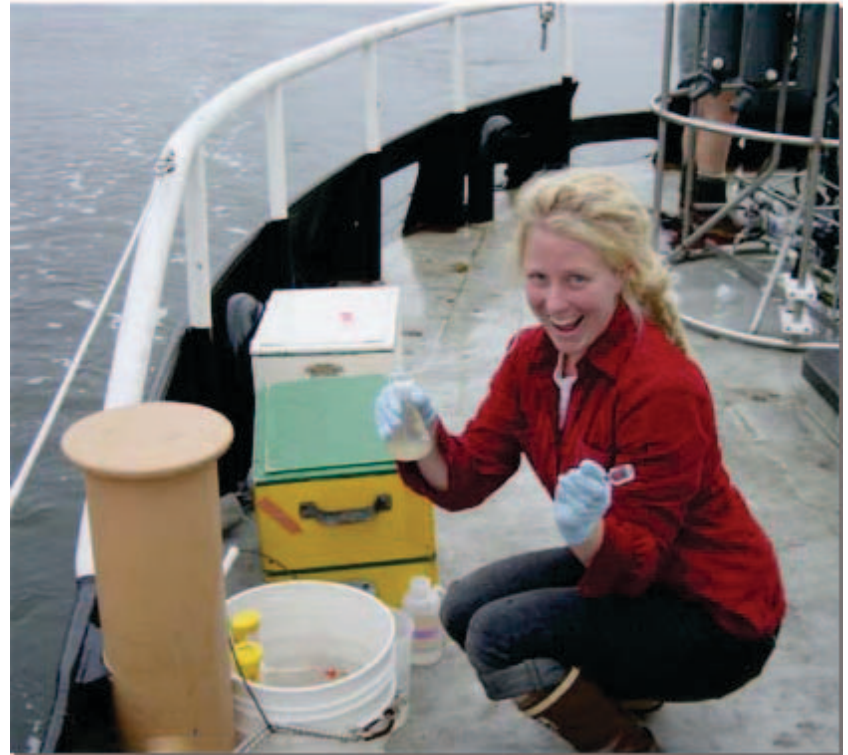
- Bald Eagle
- Scoter
- Shorebird
- Great Blue Heron



2011 Coastal Atlas Update

- Update user interface
- Improved photo viewer
- Add beach water quality & beach closure info
- Add FEMA flood maps
- Add shoreline public access information
- Update map tools on main map

Ecology EAP & DOH BEACH Program



Beach Closures



Home > Beach closures

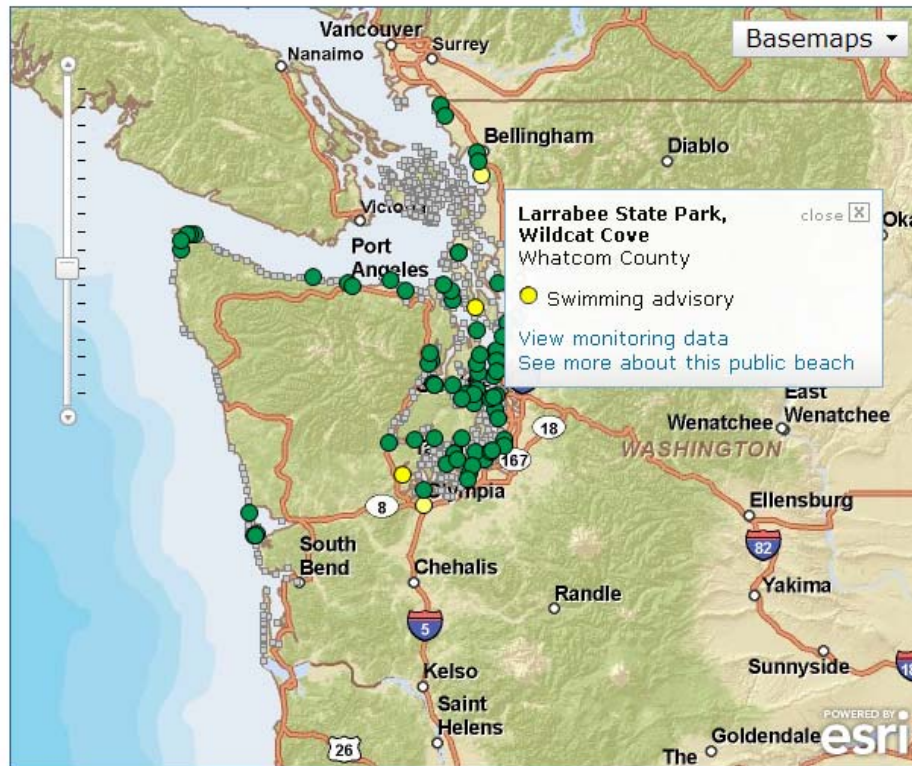
Find swimming beach closures

Zoom to a county

or

Zoom to a city

Go



- **CLOSED**
Beach closed for swimming.
 Closed by the local health department or the Public Health Officer. Often due to sewage spills.
- **CAUTION**
Swimming advisory.
 Children, elderly, and those in ill health are advised not to swim. Increased levels of bacteria are present.
- **OPEN**
Beach open and monitored.
 Bathing after swimming is recommended. Harmful bacteria may still be present.
- **Beach not monitored.**

Washington State's Beach Environmental Assessment, Communication and Health (BEACH) Program monitors swimming beaches for health risks.

The BEACH Program monitors high-risk swimming beaches from Memorial Day to Labor Day.

[Beach Program](#) > [Beach Query](#)
Results for: LARRABEE STATE PARK, WILDCAT COVE, (WA542379)
Weekly Averages - Beach

Date	Ecoli	Entero	Fecal
8/16/2011		135	
8/8/2011		17	
7/28/2011		27	
7/27/2011		< 10	
7/21/2011		829	
7/19/2011		687	
7/5/2011		20	
6/28/2011		< 10	
6/21/2011		20	
6/16/2011		165	
6/14/2011		168	
6/7/2011		824	
5/31/2011		12	
5/23/2011		15	
11/1/2010		680	
9/2/2010		< 10	
8/31/2010		109	
8/30/2010		< 10	
8/29/2010		< 10	
8/28/2010		< 10	
8/27/2010		13	
8/26/2010		27	
8/25/2010		43	
8/20/2010		32	
8/17/2010		483	
8/10/2010		120	
8/3/2010		361	
7/27/2010		< 10	
7/20/2010		86	
7/13/2010		< 10	
7/6/2010		< 10	
6/29/2010		65	
6/22/2010		< 10	
6/15/2010		144	
6/7/2010		24	

**Geometric Means - Stations
(Seasonal)**

entero

station	2005	2007	2008	2009	2010	2011
WHA034A	12					
WHA034B	12					
WHA034C	12					
WHA034F		25	28	22	29	61
WHA034G		18	22	26	23	57
WHA034H		10	17	15	25	18

2011 Coastal Atlas Update

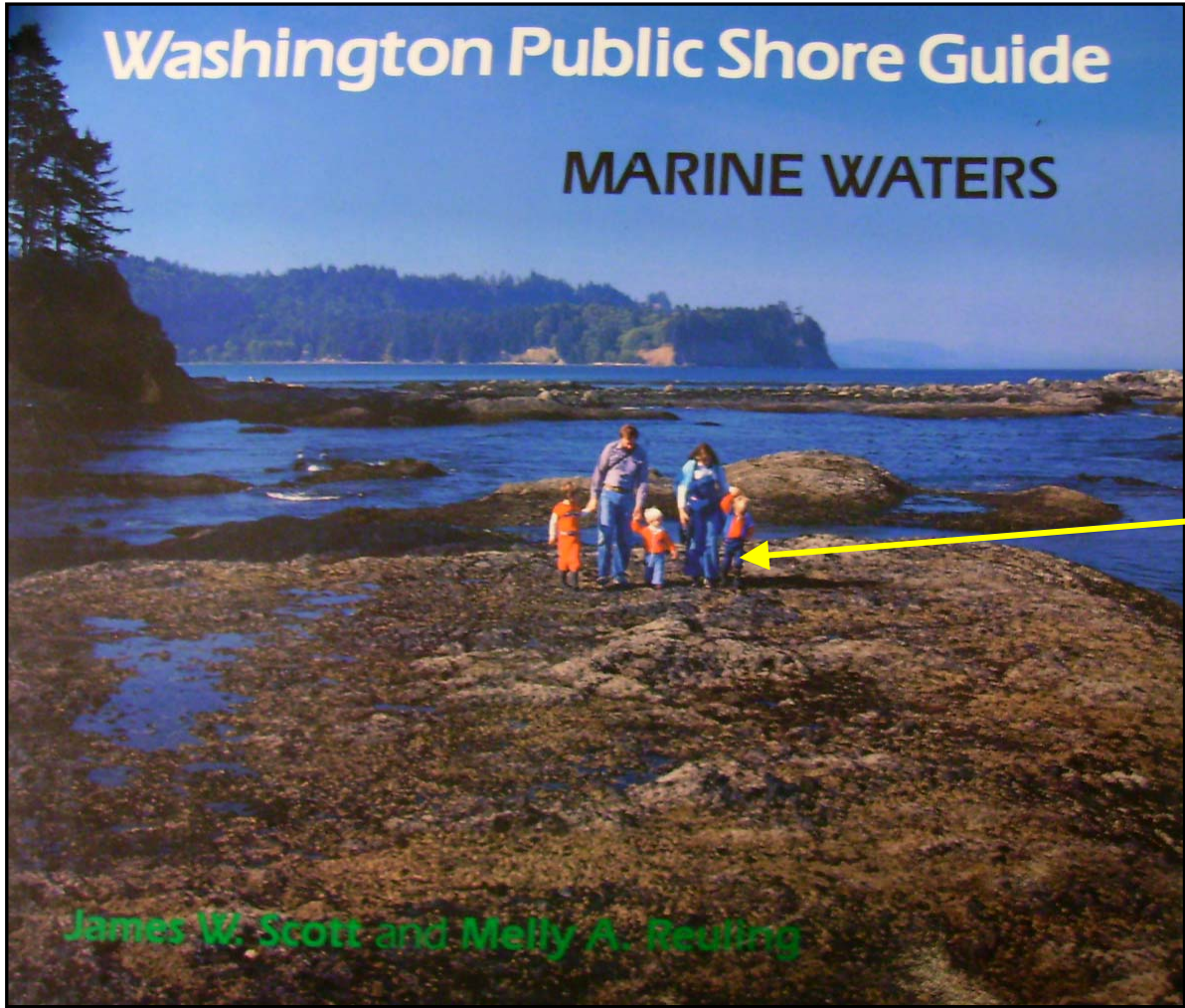
- Update user interface
- Improved photo viewer
- Add beach water quality & beach closure info
- Add FEMA flood maps
- Add shoreline public access information
- Update map tools on main map

Why is Shoreline Public Access an issue in Washington State?

- *60 to 70 percent* of Washington's tidelands are in private hands. Public access is available only to about *30 percent* of the state's shorelines.
- The people of Washington State want to be able to *see, touch and enjoy* the shorelines of the state. They embodied this desire by referendum in the *Shoreline Management Act of 1972*.
- The Shoreline Management Act has three broad policies related to how we use and develop shorelines, one of the State's most valuable and fragile natural resources.
- *The public's right to shoreline access is one of the SMA's three pillar policies.*







Bell
Bottoms

1986

Reaching the Shore:

Adding marine shoreline
public access information to
the Washington Coastal Atlas



Deborah Purce, NOAA Coastal Fellow 2008-2010



Field work!





Find a public beach

Go

[or go to page >](#)



Find beach closures

Go

[or go to page >](#)



Explore coastal maps

[Visit the old atlas](#)

Go

News

Welcome to the new, improved Washington Coastal Atlas!

Coming soon:

- View FEMA flood maps
- Improved shoreline photo viewer
- Upgraded interactive map

Related Information

[Washington's Coastal Zone Management Program](#)

[Shoreline Management](#)

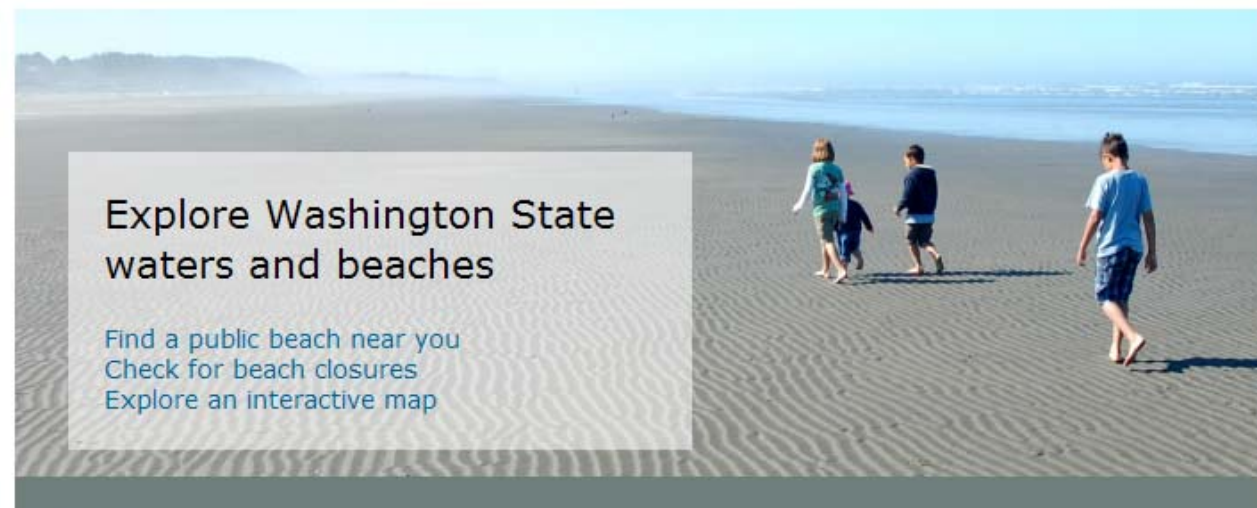
[BEACH Program](#)

[Washington's Ocean Resources](#)

[GIS data available from Ecology](#)

[Marine Water Quality Monitoring](#)

[How to report a spill](#)



Explore Washington State waters and beaches

- [Find a public beach near you](#)
- [Check for beach closures](#)
- [Explore an interactive map](#)



Find a public beach in Washington State

[Find](#)[More search options >](#)[Search by map >](#)

Download public beach data on
Washington State.

[Download public beach data >](#)



Take care of our shores...

Don't disturb wildlife

Give marine mammals,
birds, and other wildlife
plenty of space.

Don't trespass

Please stay within park
boundaries.

Keep pets under control

Use your scooper.

[More >](#)



Find Public Beaches in Washington State

Where do you want to go?

Enter county, city or beach name

Find

or

Clallam

Search by city

Search by beach

Search by region

What do you want to do?

- | | |
|---|---|
| <input checked="" type="checkbox"/> Beach Walking | <input type="checkbox"/> Birds & Wildlife Viewing |
| <input type="checkbox"/> Hiking | <input type="checkbox"/> Shellfishing |
| <input type="checkbox"/> Bicycling | <input type="checkbox"/> Crabbing |
| <input checked="" type="checkbox"/> Tidepooling | <input type="checkbox"/> Fishing |
| <input type="checkbox"/> Swimming | <input type="checkbox"/> Horseback Riding |
| <input type="checkbox"/> SCUBA | <input type="checkbox"/> View Point |
| <input type="checkbox"/> Surfing | |

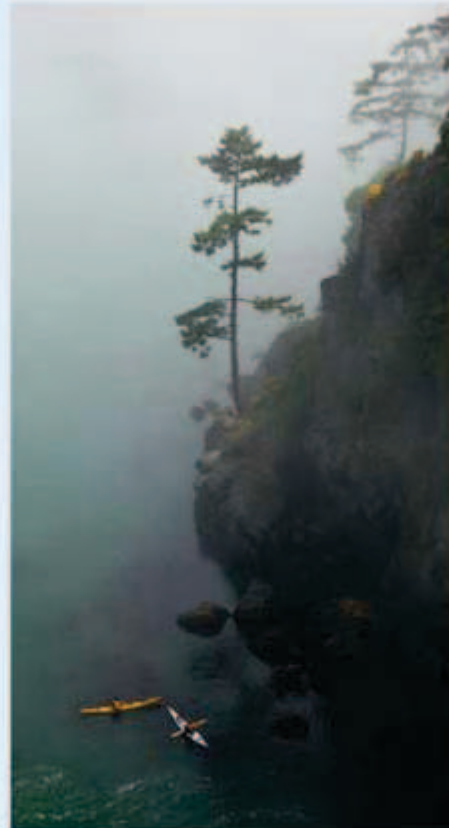
clear selection

What amenities do you want?

- | | |
|---|--|
| <input type="checkbox"/> Hiking trail | <input type="checkbox"/> Boat launch |
| <input type="checkbox"/> ADA Features | <input type="checkbox"/> Kayak launch |
| <input checked="" type="checkbox"/> Restrooms | <input type="checkbox"/> Marina |
| <input type="checkbox"/> Drinking Water | <input type="checkbox"/> Dock/Pier |
| <input type="checkbox"/> Picnic Facilities | <input type="checkbox"/> Public Transportation |
| <input type="checkbox"/> State Park | <input type="checkbox"/> Washington Water Trails |
| <input type="checkbox"/> Camping | |

clear selection

Find





Public Beaches

Home > Public Beaches > Search Results

Find Public Beaches: Search Results

Search:

Enter county, city or beach

Find

or

Search by county

Search by city

Search by beach

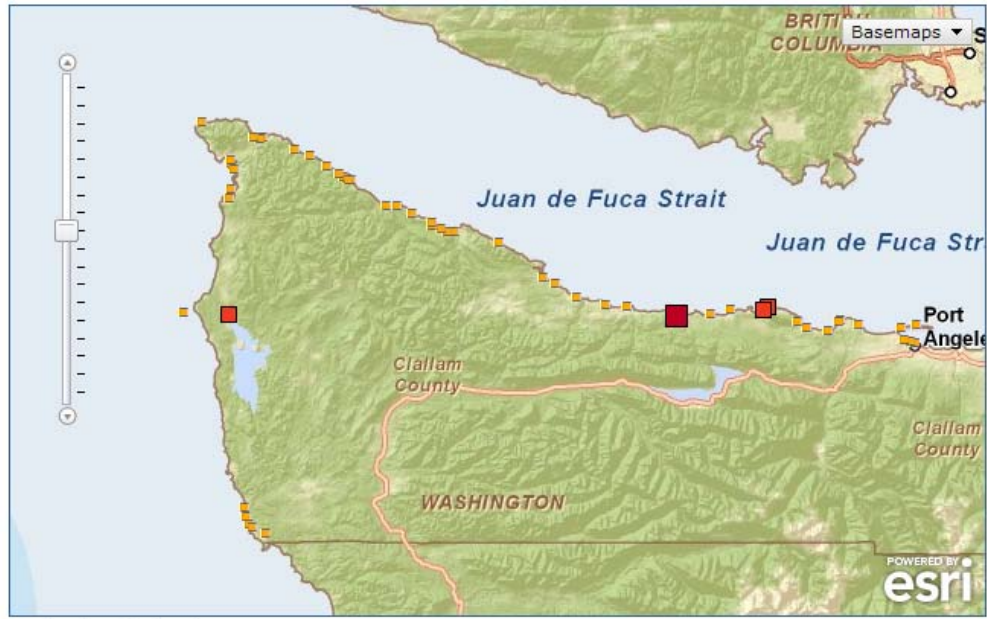
Search by region

Find

More search options >

Search for tidepooling, boat launches, wheelchair access, etc.

Download Data >



List beaches displayed on map >

Your search returned ■ 4 public beaches ■ Other public beaches

Beach name	Beach report
Ozette Beach Access, Olympic National Park	see more >
Twin Rivers, Beach 422	see more >
Salt Park Recreation Area - Stripped Peak Cove Trailhead	see more >
Salt Park Recreation Area - Lower Beach Access	see more >

Visiting public shores

Check beach closures
before swimming, surfing, or kayaking.

Check shellfish safety
before harvesting shellfish.

Don't trespass
Please stay within park boundaries.

Pick up trash
Glass, plastic, and other trash are hazardous to wildlife and people.

Take only pictures
Leave marine life at the beach.

Don't disturb wildlife
Give marine mammals, birds, and other wildlife plenty of space.

Keep pets under control
Use your scooper.



More about public shores:
Public Trust Doctrine



Public Beaches

Search:

Enter county, city or beach

Find

or

Search by county

Search by city

Search by beach

Search by region

Find

[More search options >](#)

[Download Data >](#)

Home > Public Beaches > Search Results > Twin Rivers, Beach 422

Twin Rivers, Beach 422



■ Access point ■ Other access point - - - Public beach

Get directions from:

Enter your start address, city or zip **Go**

Fees

✓ No fees

Parking

✓ Unpaved parking

Activities

- ✓ Hiking
- ✓ Tidepooling
- ✓ Shellfishing
 - [Status \(Health\)](#)
 - [Season \(WDFW\)](#)
- ✓ View Point

Amenities

✓ Restrooms

email print page Share

More information

[Clallam County Marine Recourses Committee](#)

[Clallam County Parks](#)

[Clallam County Shore Stewards - WSU Extension](#)

[Check Weather](#)

[Check Tide](#)

Suggestions for this page? Tell us!

Only the **HEALTH STATUS** of beaches are shown on these maps.

For **SEASONS & LIMITS** visit [Washington State Department of Fish and Wildlife](#).

Marine Biotoxin Closure Zones



Closed for clams, geoduck, scallops, mussels, oysters, snails and other invertebrates.

Marine Biotoxin status updated, 8/12/2011 6:53:22 AM

Public Beaches
 Closed

VIBRIO ADVISORY:

Cook All Shellfish

See the fact sheet on [Summer Precautions for Recreational Harvesters](#)

Beach Information

Name: DNR-422

Marine Biotoxin Closure
Closed for clams, geoduck, scallops, mussels, oysters, snails and other invertebrates.

Owner: Department of Natural Resources

ADVISORY:

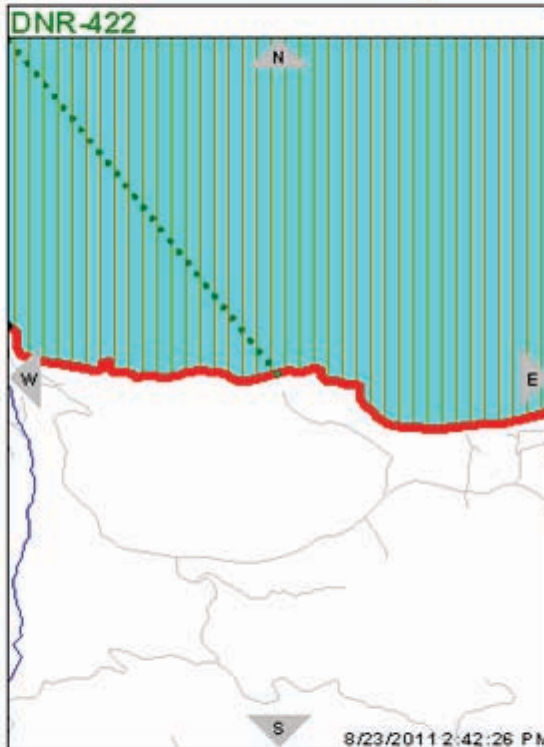
This beach has not been evaluated by the Department of Health for pollution problems. Contact your local health department for local information about pollution problems in this area.

[WDFW Regulations/Restrictions](#)

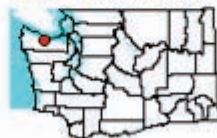
[DOE Shoreline Photo](#)

[Tide Predictions](#)

GPS: -123.94216,48.16531 TO -123.83417,48.15734



Inside Clallam County



[Start Over](#)

[Emergency Closures Due to Marine Biotoxins and Vibrio - Text Version](#)

NEW [County Beach List](#)

[Recreational Program](#)

[Fact Sheets](#)



FISHING & SHELLFISHING

 [Search](#)

- [Home](#)
- [About WDFW](#)
- [Conservation](#)
- [Fishing](#)
- [Hunting](#)
- [Wildlife Viewing](#)
- [Licensing & Permits](#)
- [Living with Wildlife](#)

Recreational Shellfishing

Public Clam & Oyster Beaches

Shellfish and Seaweed Harvest Rules

Clams

Crab

Crayfish

Geoduck Clams

Mussels

Oysters

Razor Clams

Shrimp

Squid

Statewide Harvest Rules

Puget Sound Clam and Oyster FAQ

Frequently asked questions about clam and oyster regulations and management.

Shellfish Harvester Please Fill in Your Holes

Find out why this protects both shellfish and people.

2011/2012 Public Beach List - Special Rules NEW!

Public beaches with special rules because of resource needs and/or restrictions on harvest due to health concerns.



Recreational Shellfishing

[Buy Your License Online!](#)

Public Clam and Oyster Beaches

[< Previous](#) | [Start Search Over](#)

DNR-422

230070

SHELLFISH TYPES & OPENINGS/CLOSURES

Clams open all year
Oysters open all year

HARVEST PROFILE

Not much is known about clam resources on this beach.

[Map to this point](#)

Beach information last updated: March 22, 2010 @ 3:07pm

IMPORTANT NOTICE

Boat access only. DANGER: Boat landing is extremely dangerous. There is no public upland access to this beach.

HEALTH ADVISORIES

Check Dept. of Health (DOH) for [health restrictions](#) on this beach

MISC. BEACH INFORMATION

Boat Access Only

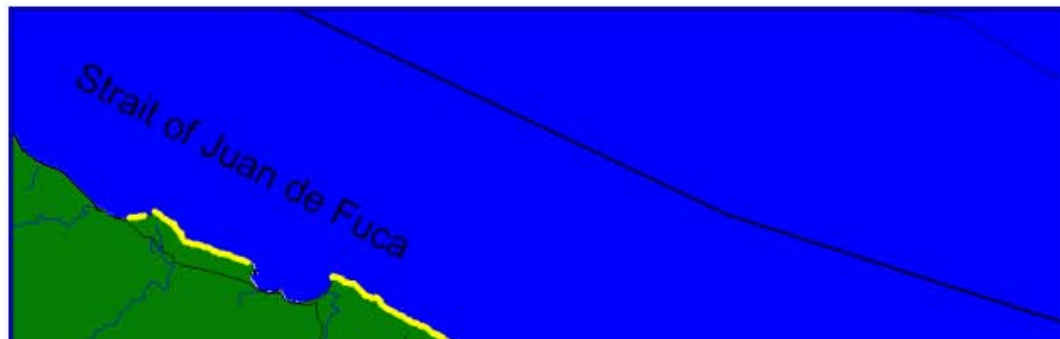
[Clallam County](#) | [Region 6 Information](#)

[Marine Area 5 \(SEKIU AND PILLAR POINT\)](#)

[SHOW DESCRIPTION](#) ↓

Clallam Bay

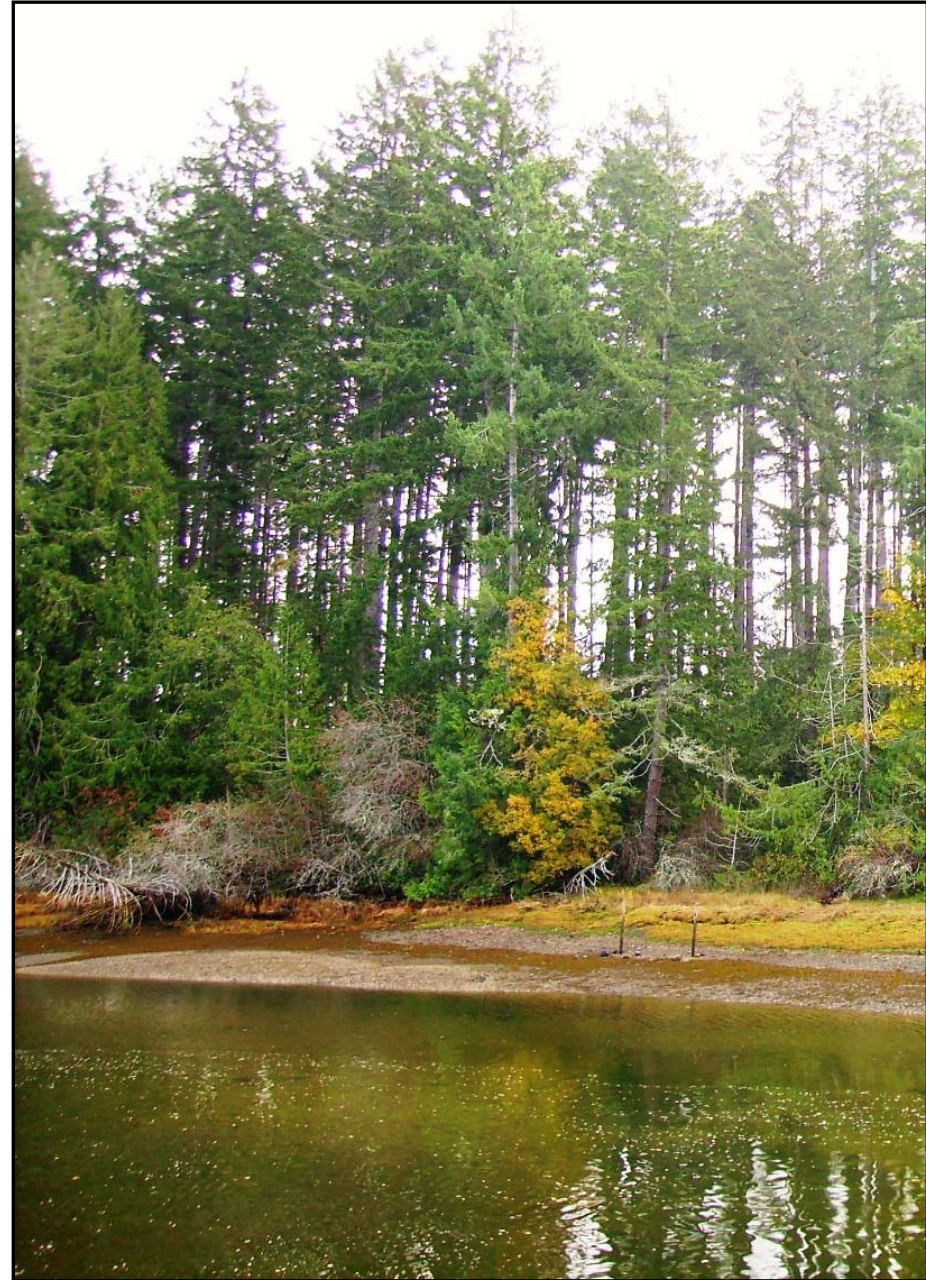
For individual beach information, including harvesting seasons, click on the yellow squiggles below.



Formal Access



Informal Access



Public Road Ends



CITY OF
SANMIGUEL ISLAND
PUBLIC ROAD END
WALKING SHOWN TO RISK
BEFORE YOUR OWN WALK
WALKERS MUST BE ON LEASH
NO OVERNIGHT PARKING
NO OTHER TRAILS
NO CAMPING



SHORE ACCESS



CITY OF
SANMIGUEL ISLAND
PUBLIC ROAD END
WALKING SHOWN TO RISK
BEFORE YOUR OWN WALK
WALKERS MUST BE ON LEASH
NO OVERNIGHT PARKING
NO OTHER TRAILS
NO CAMPING

NO CAMPING
NO OTHER TRAILS
NO OVERNIGHT PARKING
WALKERS MUST BE ON LEASH
BEFORE YOUR OWN WALK
WALKING SHOWN TO RISK



SHORE ACCESS



Public

- Docks
- Piers
- Boat launches
- Marinas



Personal Watercraft Access Only



How do we let people know
all this is available?



Chris Gregoire

@GovGregoire Olympia, WA
Governor, State of Washington
<http://www.governor.wa.gov>

+ Follow

Text follow GovGregoire to your carrier's shortcode

Tweets Favorites Following Followers Lists



GovGregoire Chris Gregoire
Congrats to Seattle's glassybaby founder Lee Rhodes - named a finalist for Entrepreneur of 2011! Cast your vote! bit.ly/qT11VO
15 Aug



GovGregoire Chris Gregoire
Celebrating in E. WA - where years of hard work is now delivering more water to help our fish and farmers - protecting thousands of jobs!
2 Aug



GovGregoire Chris Gregoire
Had a great time at the Canoe Journey, an inter-tribal gathering in the NW. Thanks for the invite and opportunity to get out on the water.
26 Jul



GovGregoire Chris Gregoire
I will be @KCTS Ask the Governor tonight at 7 p.m. #AsktheGov at bit.ly/askthegov
20 Jul



GovGregoire Chris Gregoire
Appeared on CNBC this morning to talk about WA's economic recovery! bit.ly/plx51g. Will be on MSNBC at 10:30am this morning. Tune in!
14 Jul



GovGregoire Chris Gregoire
Heading to the beach? Check out Ecology's Coastal Atlas: 1.usa.gov/kOh6B2.
5 Jul

close x

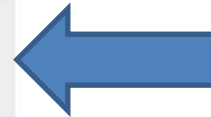


@GovGregoire
Chris Gregoire

Heading to the beach? Check out Ecology's Coastal Atlas: 1.usa.gov/kOh6B2.

5 Jul via web

Retweeted by coastalservice and 3 others




 RELATED TOPICS

- [Newsroom Home](#)
- [News Archive](#)
- [2011 Legislative Summary](#)
- [2011 Bill Action](#)
- [2011 Legislative Agenda](#)
- [2011 Trade Mission](#)
- [2010 Trade Mission](#)
- [Blog](#)
- [Flag Lowering](#)
- [New Media](#)
- [Speeches](#)
- [Photo Gallery](#)
- [Executive Orders](#)
- [Directives](#)
- [Proclamations](#)

The Blog



Ted Sturdevant, Director, Department of Ecology

07/05/11

With rising gas prices, families are putting more thought into their weekend plans. No one wants to drive for hours – especially with tired kids -- just to find that a favorite beach is closed for swimming or a campsite isn't what you had in mind.

Ecology has recently launched a new online Public Beach Access feature on its [Coastal Atlas](#) website that should help. Now, anyone with access to a computer can research and plan a great trip to any of Washington's public beaches, including those owned by the Washington [State Parks](#) and Recreation Commission, the Department of Natural Resources, counties and cities, or another agency.

The Coastal Atlas allows you to search for a Washington public beach by typing in an area, an address, or simply hovering a mouse over the interactive map of Washington and zooming in. It lets you see ahead of time whether the beach is closed to swimming and why.

It also gives you directions to legally access the beach, with photographs of signs, trailheads and other markers. This is especially helpful when the legal access area isn't well marked or is located some distance from the beach.

The site contains a wealth of information about facilities at public beach access points, too: where they are and whether they have bathrooms, drinking water, picnic tables, barbeque pits, camping and close by recreational activities. It also links to weather and tide conditions and information on public boat launches, docks, marinas and more.

The Department of Health and National Oceanic and Atmospheric Administration (NOAA) partnered with Ecology in developing the Beach Access online tool. A NOAA Coastal Fellow, assigned to Ecology

2011 Coastal Atlas Update

- Update user interface
- Improved photo viewer
- Add beach water quality & beach closure info
- Add FEMA flood maps
- Add shoreline public access information
- Update map tools on main map

Coastal Atlas



- FULL STATE
- ZOOM IN
- ZOOM OUT
- PAN
- ZOOM TO
- ZOOM LAST
- VIEW PHOTO
- SELECT
- SELECT POLYGON
- BUFFER
- CLEAR SELECT
- LAND COVER
- MEASURE
- PRINT MAP

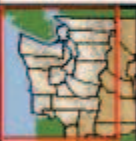
Refresh Map

Data Layers

- Biological/Habitat Features
- Physical Features
- Regulated Features
- Modifications
- Jurisdictional Delineations
- Transportation Features
- Background Imagery
- Satellite Imagery

Help:

- A closed group: click to open.
- An open group: click to close.
- A hidden layer: click to make visible.
- A visible layer: click to hide.
- A visible layer, but not at this scale.



View Shoreline Photos

Choose a time period for which you would like to view photos below, then click on a point to view the oblique 1970's, 1990's or 2000's photos or within a grid cell for the vertical 1940's photos.

Vintage:

WASHINGTON STATE Department of Ecology Coastal Atlas



Find on Map

Photo Reference: 060627_03818

Date: 6/27/2006

Area: Puget Sound

Download links for this photo:

Low Resolution (800 x 531 pixels, 76Kb)

High Resolution (4288 x 2848 pixels, 3278Kb)

Approx. 11 seconds for 56kbps modem; 2 seconds for Cable/DSL

Approx. 7.8 minutes for 56kbps modem; 69 seconds for Cable/DSL

View photos of this area in other years: 1940s 1976-77 1992-97 2000-02

LAND COVER MEASURE PRINT MAP



Shoreline
Photos

Home > Shoreline photos

Find Shoreline Photos

? Help



Search by place

Street

Enter street address

City

Enter city

State WA ZIP Enter

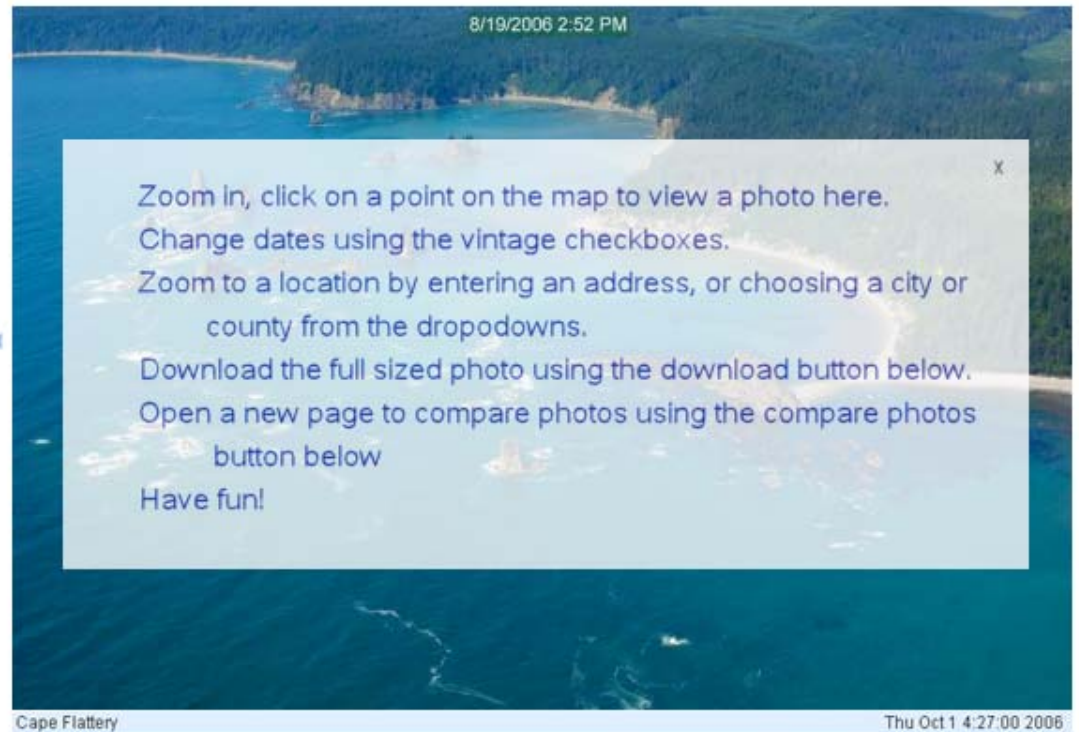
Find

Search by City

Search by County

View photos from:

- 2006
- 2001
- 1990's
- 1970's



Zoom in, click on a point on the map to view a photo here.

Change dates using the vintage checkboxes.

Zoom to a location by entering an address, or choosing a city or county from the dropdowns.

Download the full sized photo using the download button below.

Open a new page to compare photos using the compare photos button below

Have fun!

Download photo

Compare photos

5/9/2007 8:23 AM



8/11/2006 2:34 PM



6/28/2006 3:57 PM



2011 Coastal Atlas Update

- Update user interface
- Improved photo viewer
- Add beach water quality & beach closure info
- Add FEMA flood maps
- Add shoreline public access information
- Update map tools on main map

Flood Maps

Search by address:

Street
1514 North Mason Avenue

City
Tacoma

State ZIP Code
WA 98408

Find

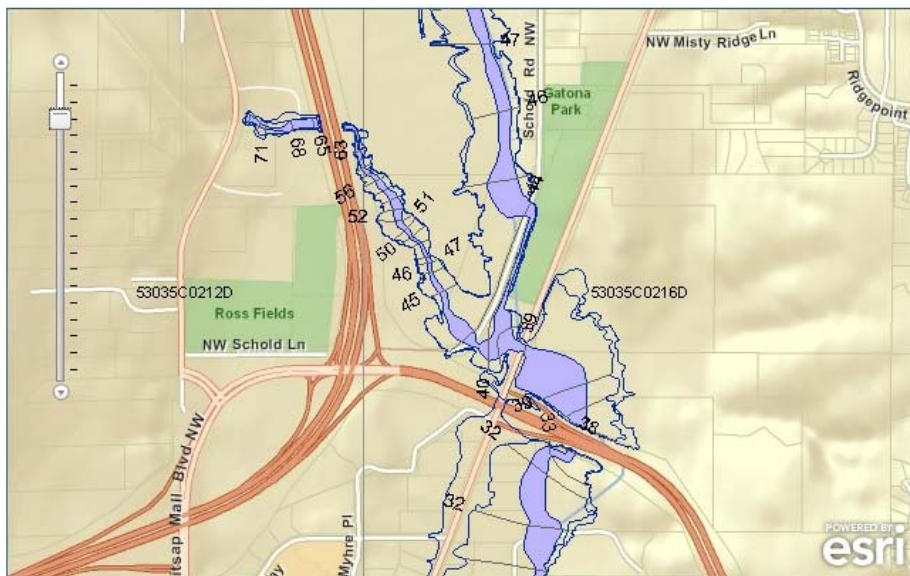
Search by County

Search by City

Find

Home > Flood Maps

Find flood maps



Download

What is a DFRIM?

[Legend goes here]

FEMA Flood Insurance Rate Maps (FIRMs) are maps of flood hazard areas.

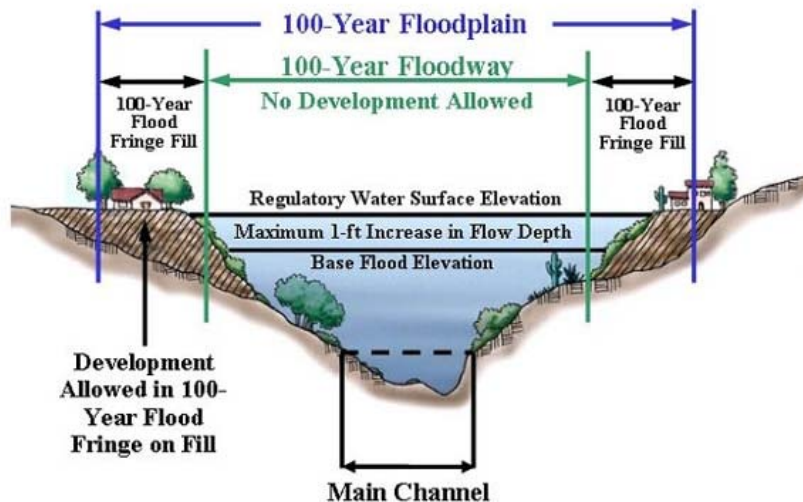
See dates of studies

Properties located in floodplains may be required to carry flood insurance

Federal Emergency Management Agency (FEMA) Flood Maps and FIRMs

National Flood Insurance Program

Dept. of Ecology Flood Information



2011 Coastal Atlas Update

- Update user interface
- Improved photo viewer
- Add beach water quality & beach closure info
- Add FEMA flood maps
- Add shoreline public access information
- Update map tools on main map



Brought to you by:

Darby Veeck

Liz O'Dea

Tammy Pelletier

(represented here by John

Tooley)

Deborah Purce



Questions?

Kathy.Taylor@ecy.wa.gov

