

# Dorset Coastal Explorer Planning



2. Mers Seas Zeeën  
INTERREG IV A  
European Regional Development Fund



## Coastal Explorer Planning - Disclaimer

Please read this information carefully.

If you wish to proceed after reading this information you must signify your agreement to the following conditions of access by selecting the Agree button below.

1. The Dorset Coast Forum or Dorset County Council are not responsible for, and gives no guarantee concerning this website, the contents of any linked website or any link contained in any linked website.
2. bla bla .....
3. Geographic data was primarily collected for the Marine Management Area (Portland Bill to Durlston Head). You are advised that data is therefore less comprehensive outside this area.

I agree to the terms stated in the disclaimer above.

Continue

[Dorset Marine and Coastal Explorer \(GIS\)](#)

[Consents Guidance \(Flowcharts\)](#)

[Policy Viewer](#)

[Checkout](#)

[Help Centre](#)

[About](#)

[Feedback \(including reporting errors\)](#)

[Contact us](#)

# Dorset Coastal Explorer Planning



[Dorset Marine and Coastal Explorer \(GIS\)](#)

[Consents Guidance \(Flowcharts\)](#)

[Policy Viewer](#)

[Checkout](#)

[Help Centre](#)

[About](#)

[Feedback \(including reporting errors\)](#)

[Contact us](#)



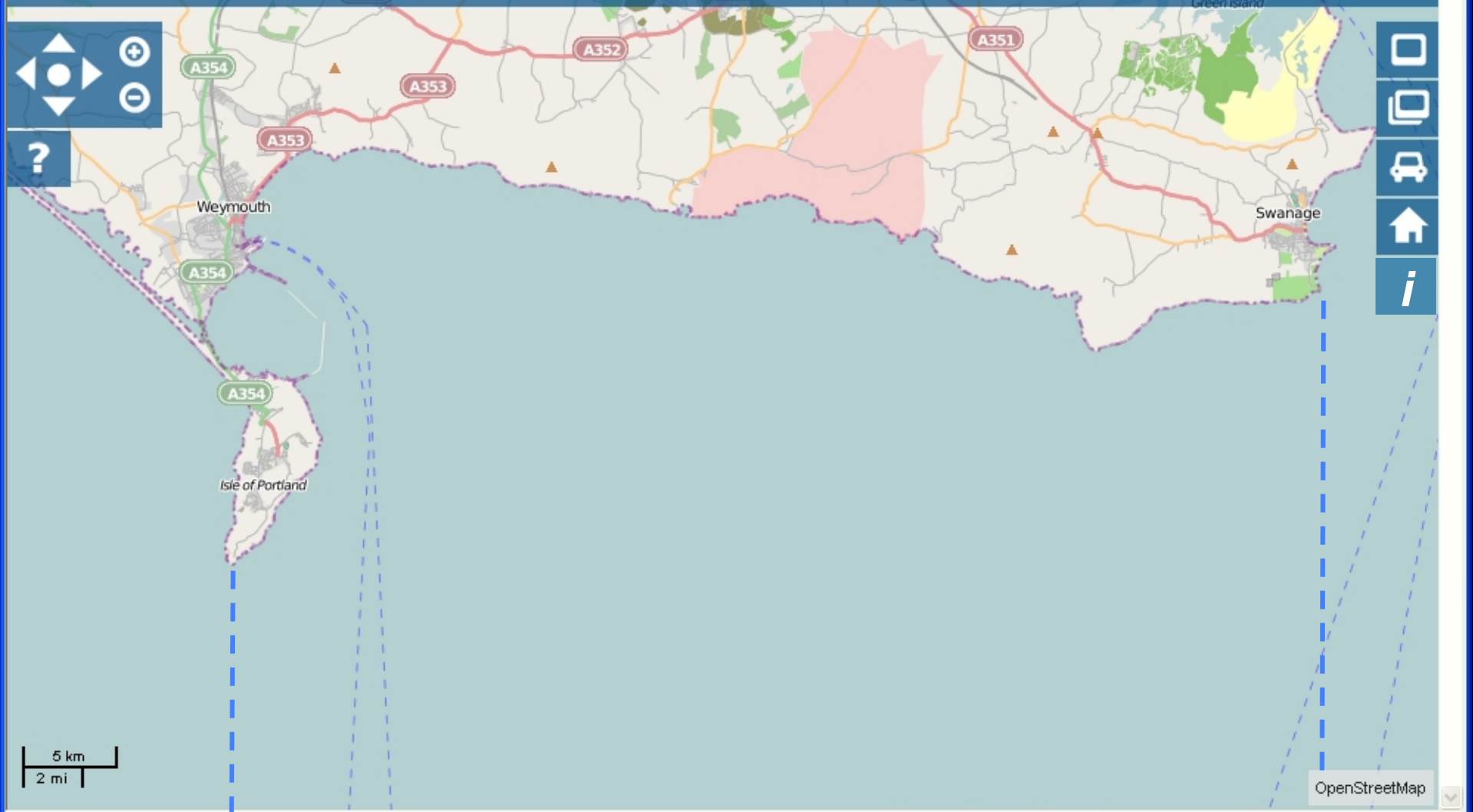
# Coastal Explorer

Combining Sea and Coastal Planning in Europe

Enter a location (town, postcode, road number etc)



Easting: 381857.40  
Northing: 60983.02  
Zoom: 47.04km (11)





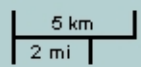
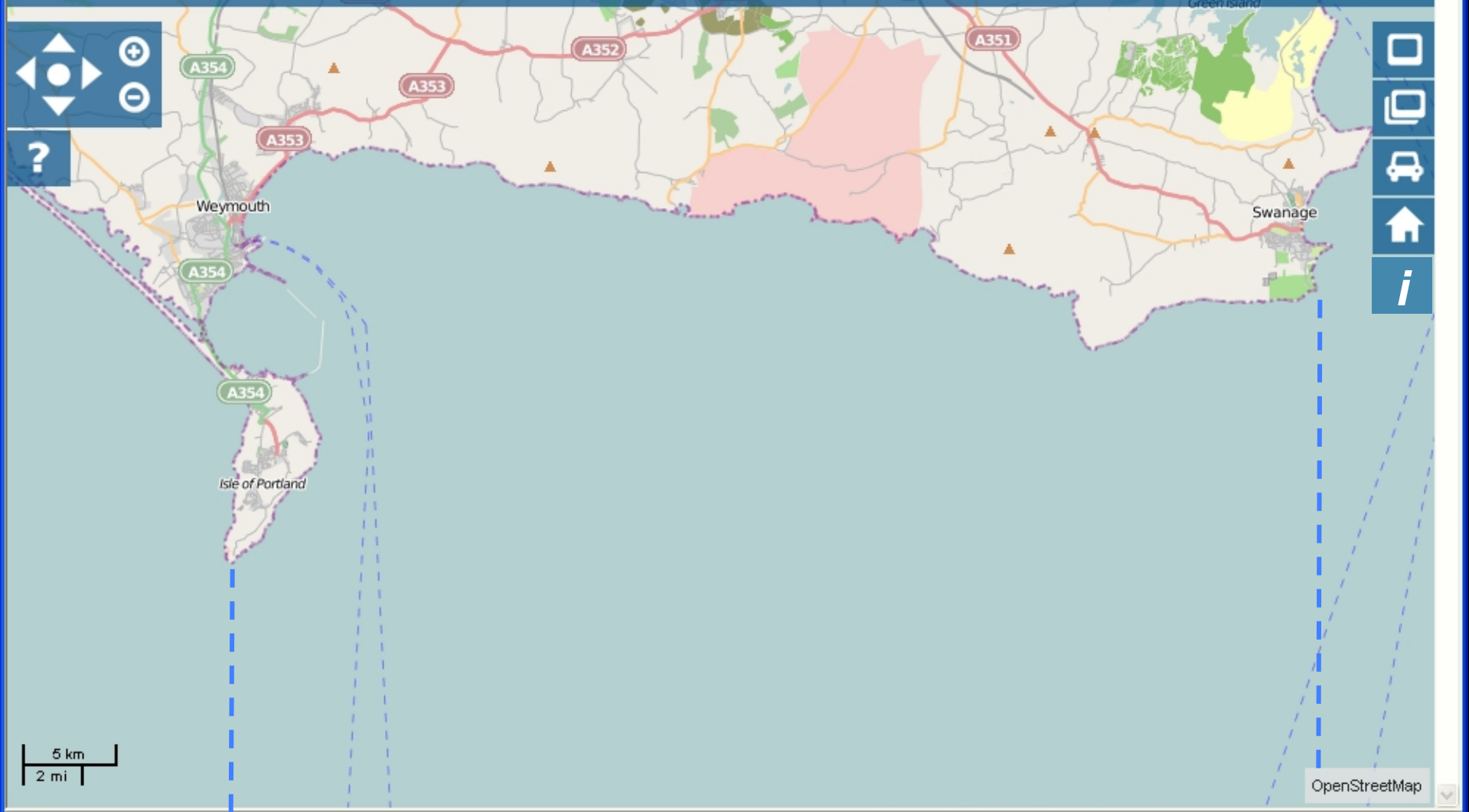
# Coastal Explorer

Combining Sea and Coastal Planning in Europe

Enter a location (town, postcode, road number etc)



Easting: 381857.40  
Northing: 60983.02  
Zoom: 47.04km (11)



OpenStreetMap

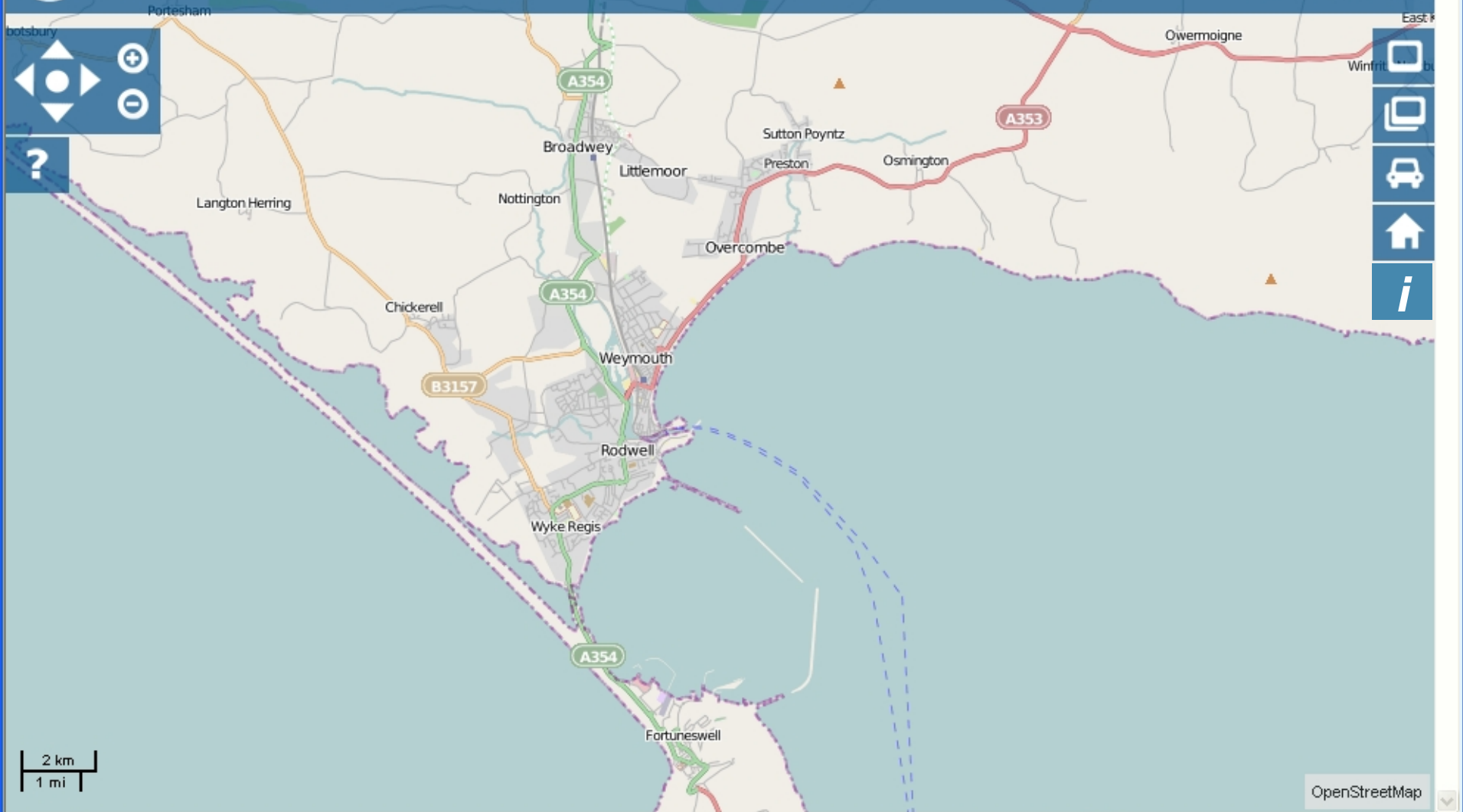
# Coastal Explorer

Combining Sea and Coastal Planning in Europe

Enter a location (town, postcode, road number etc)



Easting: 361853.65  
Northing: 82367.82  
Zoom: 23.51 km (12)

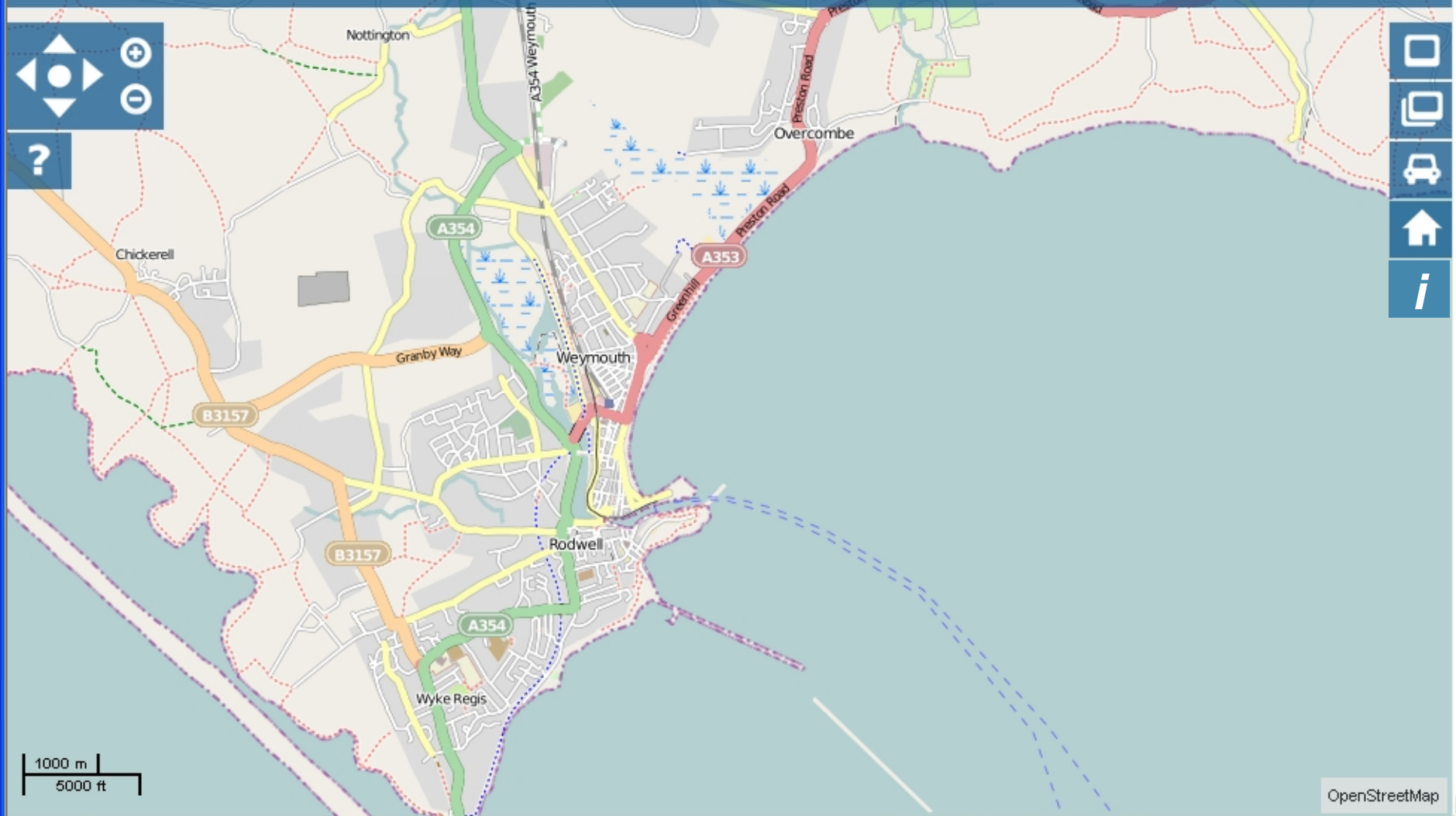




Enter a location (town, postcode, road number etc)



Easting: 368904.12  
Northing: 79923.48  
Zoom: 11.75km (13)



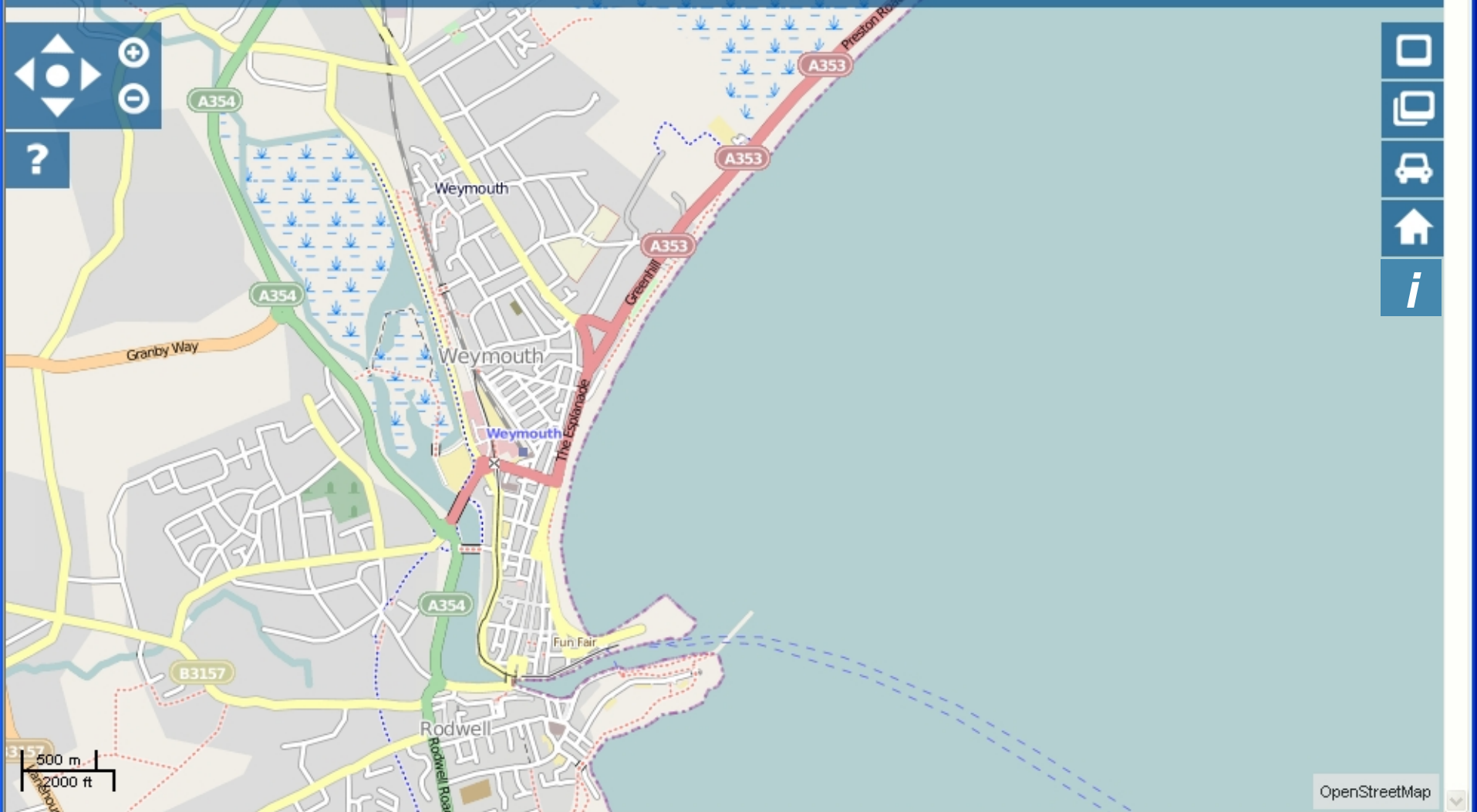
# Coastal Explorer

Combining Sea and Coastal Planning in Europe

Enter a location (town, postcode, road number etc)



Easting: 368686.03  
Northing: 80009.56  
Zoom: 5876.187m (14)



OpenStreetMap

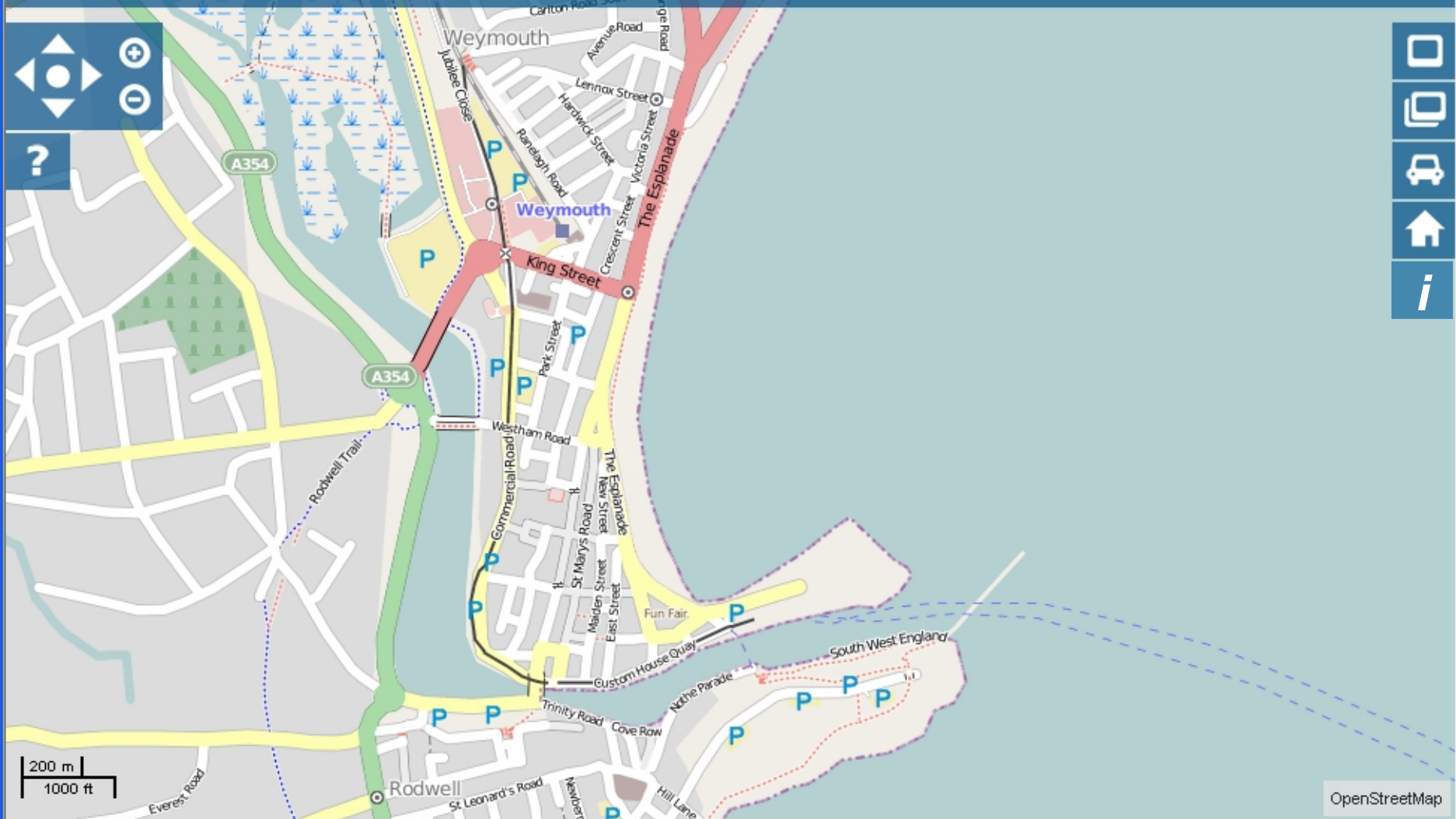
# Coastal Explorer

Combining Sea and Coastal Planning in Europe

Enter a location (town, postcode, road number etc)



Easting: 368024.26  
Northing: 79035.46  
Zoom: 2938.448m (15)





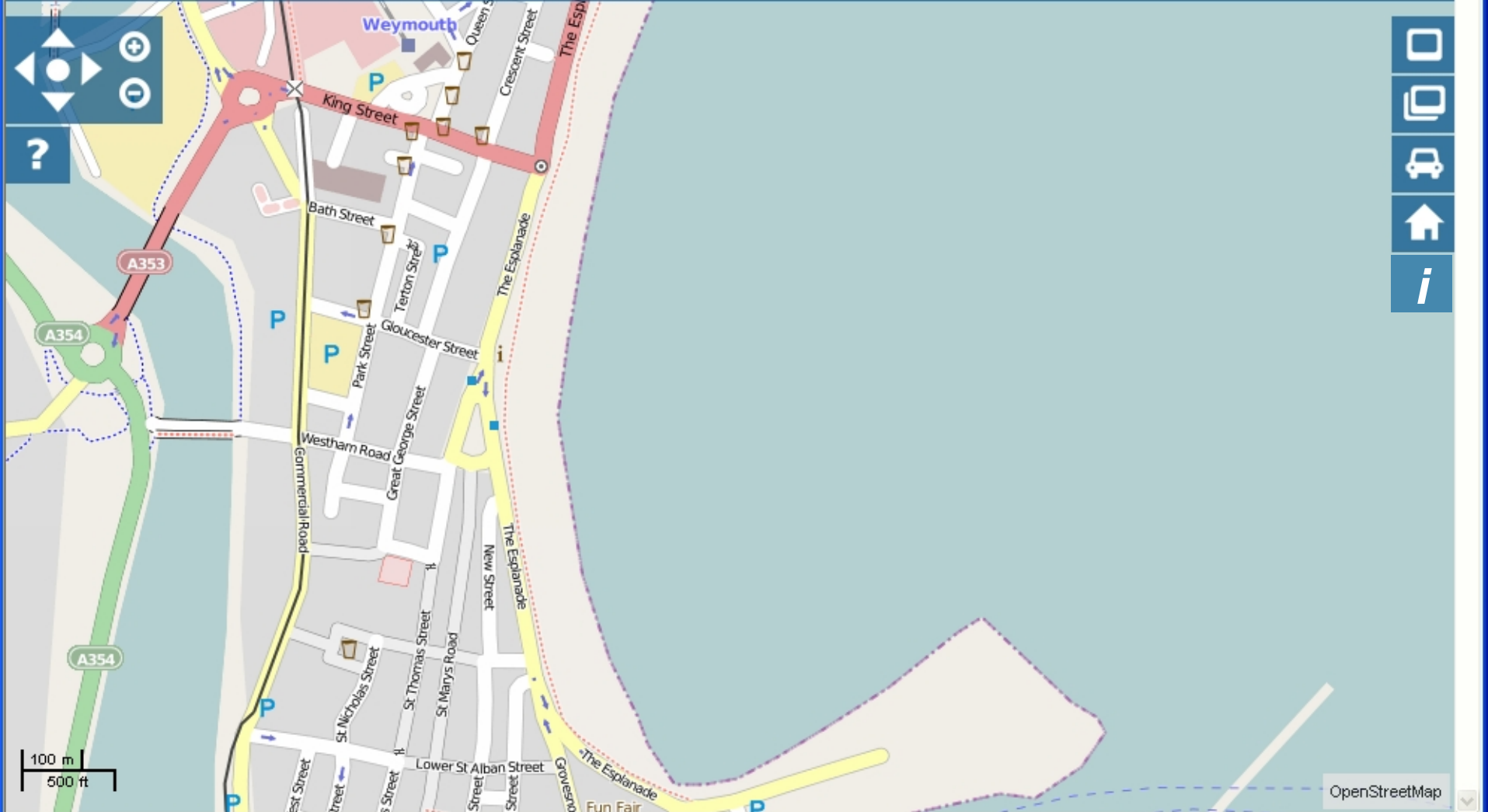
# Coastal Explorer

Combining Sea and Coastal Planning in Europe

Enter a location (town, postcode, road number etc)



Easting: 368250.51  
Northing: 79288.47  
Zoom: 1469.236m (16)





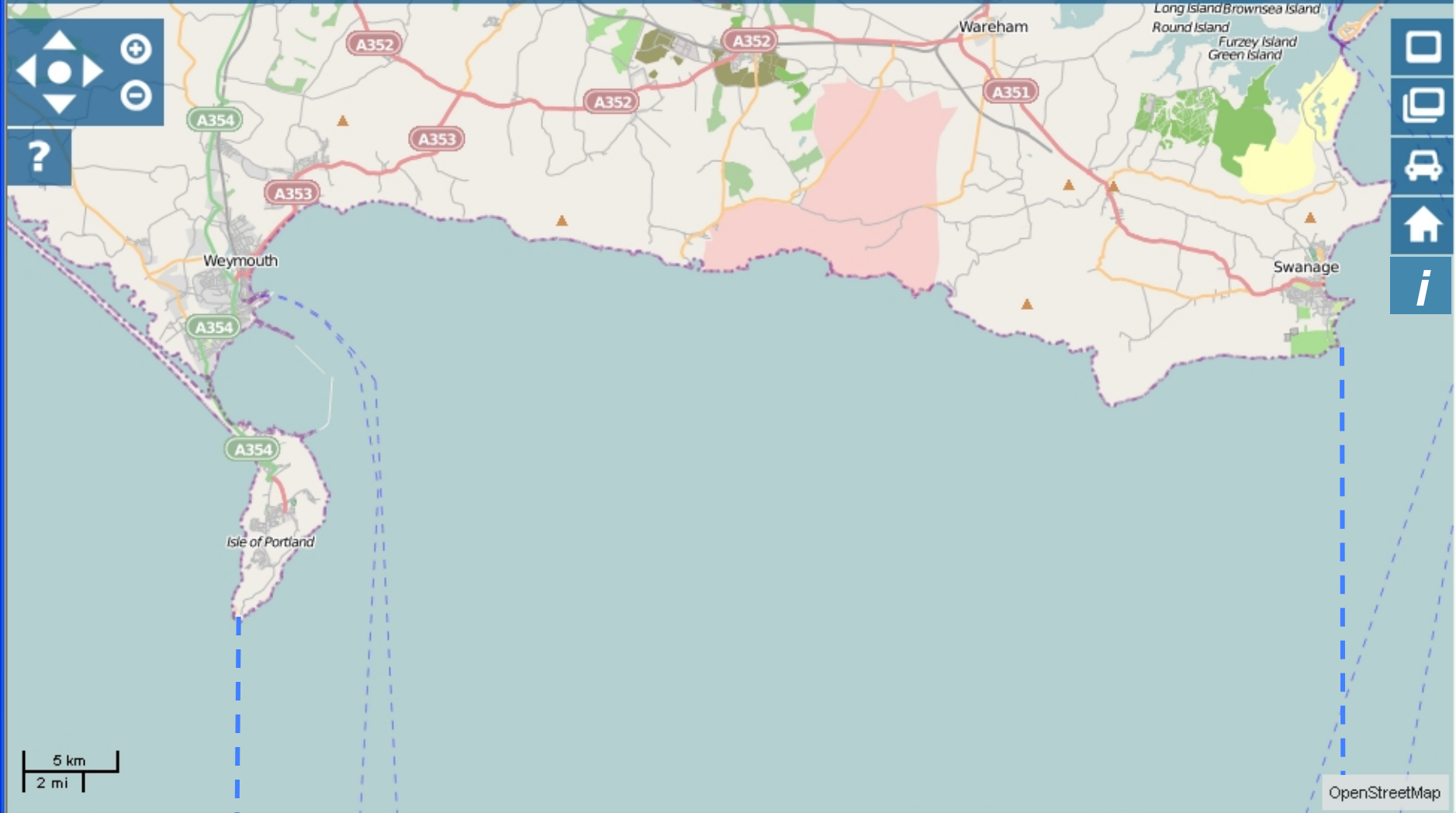
# Coastal Explorer

Combining Sea and Coastal Planning in Europe

Enter a location (town, postcode, road number etc)



POO Easting: 386469.54  
Northing: 77001.37  
Zoom: 47.02km (11)



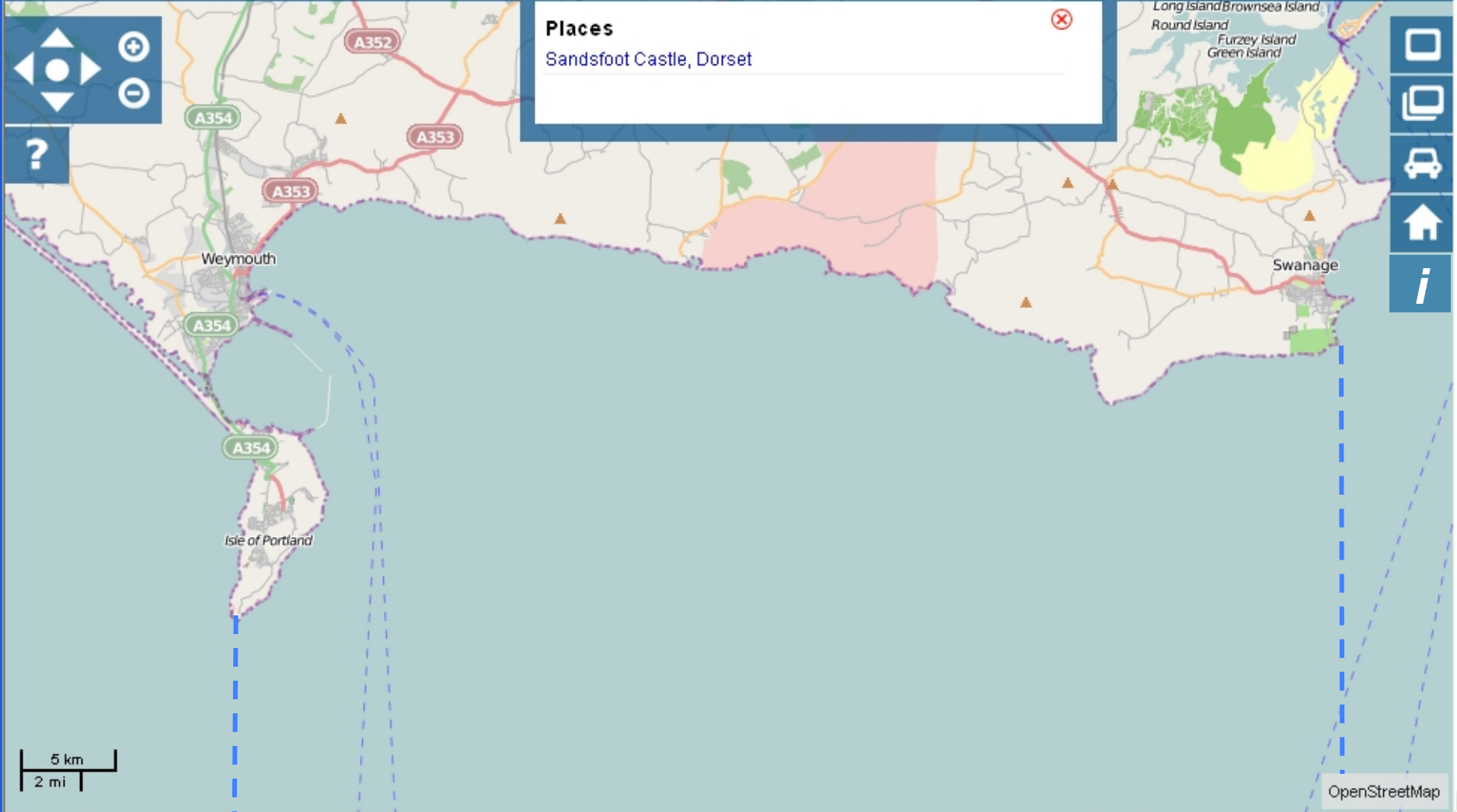
# Coastal Explorer

Combining Sea and Coastal Planning in Europe

Sandsfoot Castle

POO Easting: 384543.53  
Northing: 83110.73  
Zoom: 47.02km (11)

- ### Places
- Sandsfoot Castle, Dorset



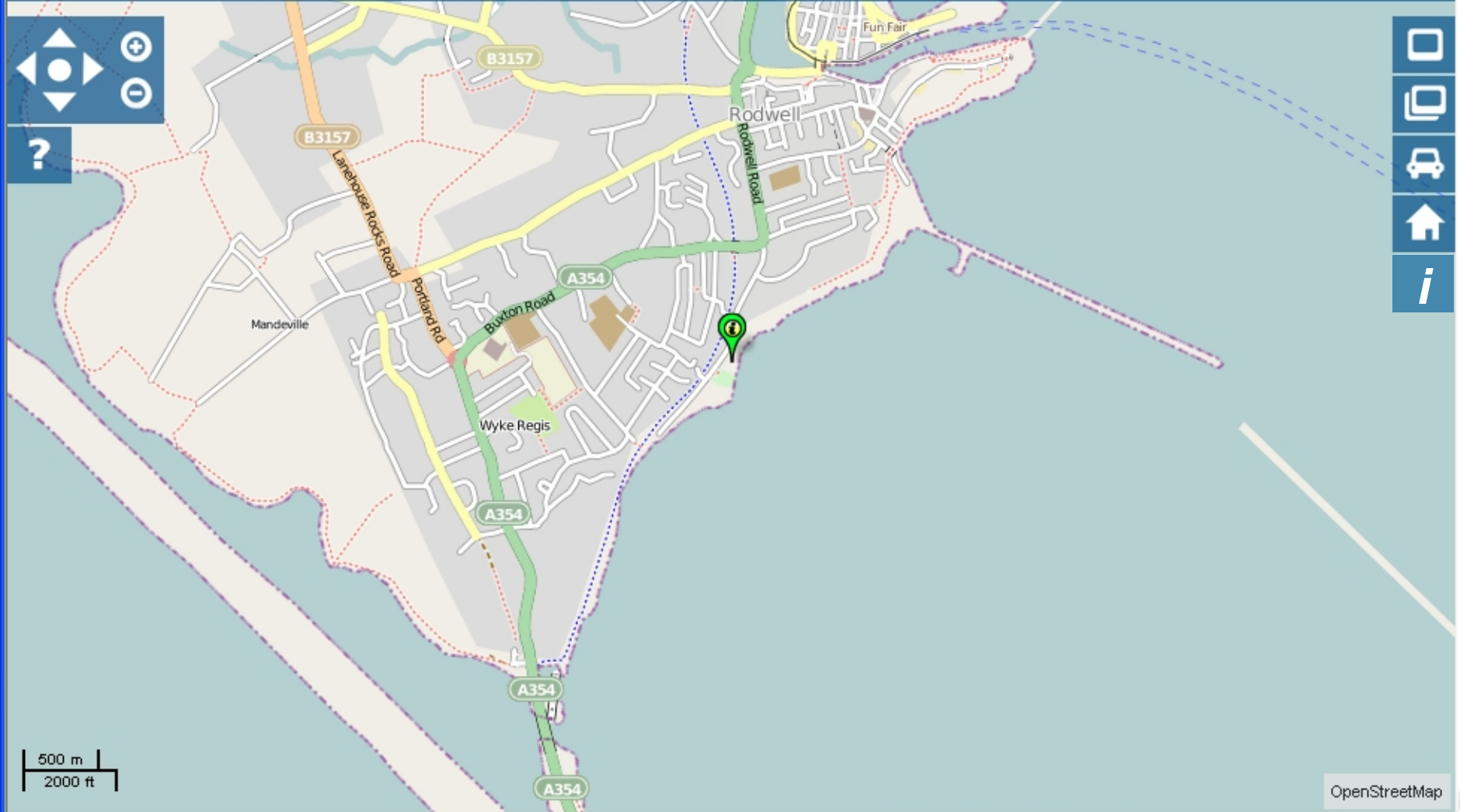
# Coastal Explorer

Combining Sea and Coastal Planning in Europe

Sandsfoot Castle



Easting: 384543.53  
Northing: 83110.73  
Zoom: 5879.912m (14)





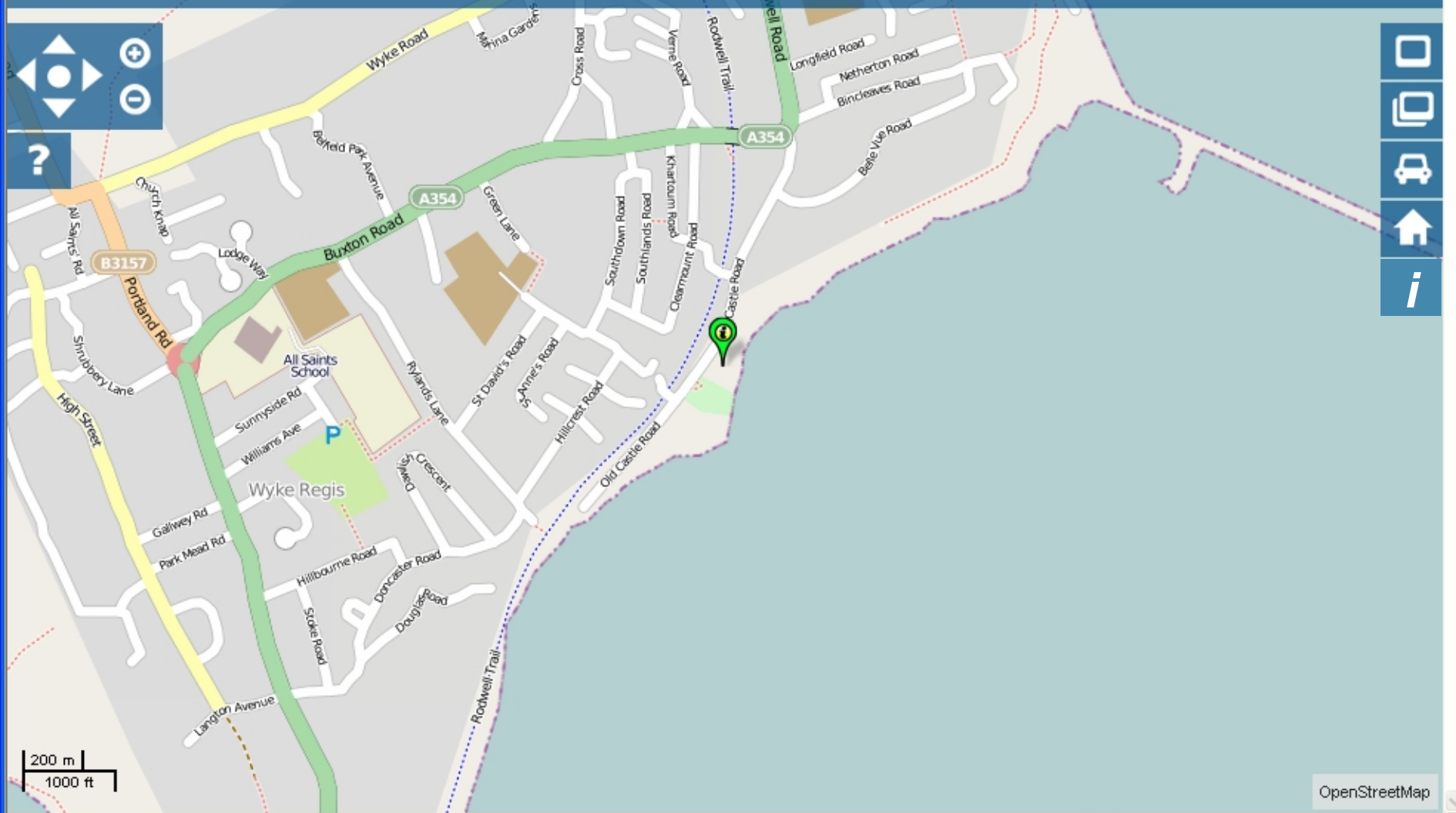
# Coastal Explorer

Combining Sea and Coastal Planning in Europe

Sandsfoot Castle



Easting: 365217.28  
Northing: 78647.55  
Zoom: 2939.482m (15)



Sandsfoot Castle



Eastings: 365217.28  
Northings: 78647.55  
Zoom: 2939.482m (15)

### Policy Report

Legislation Level	Sectors
<input type="checkbox"/> International	<input type="checkbox"/> All
<input type="checkbox"/> National	<input type="checkbox"/> Aquaculture
<input type="checkbox"/> Regional	<input type="checkbox"/> Cables
<input type="checkbox"/> Local	<input type="checkbox"/> Coastal Protection and Flood
	<input type="checkbox"/> Construction
	<input type="checkbox"/> Disposal of Waste
	<input type="checkbox"/> Dredging and Aggregate Extr

Continue

200 m  
1000 ft

OpenStreetMap

Sandsfoot Castle

Easting: 365217.28  
Northing: 78647.55  
Zoom: 2939.482m (15)



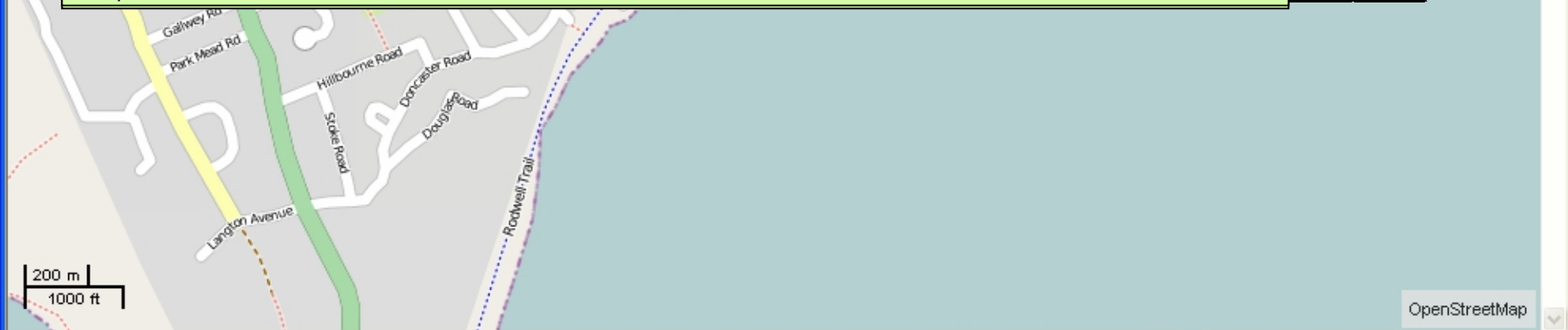
Plan	Section	Policy Number	Hyperlink	Summary	Add to basket
Portland Harbour Marine Spatial Plan	Strategic Policy	Policy 1	<input type="radio"/>	<input type="radio"/>	<input type="checkbox"/>
Portland Harbour Marine Spatial Plan	Marine Access	Policy 2	<input type="radio"/>	<input type="radio"/>	<input type="checkbox"/>

## Portland Harbour Marine Spatial Plan Policy 1 – Strategic Policy

The aim of Portland Harbour Authority's marine spatial plan policies is "to manage and regulate Portland Harbour effectively and efficiently in accordance with Portland Harbour Authority's obligations under the Portland Harbour Revision Order 1997 and to continue to develop the physical assets of the harbour while protecting the natural resources for the benefit of all Portland Harbour Authority will support all marine plans, operations and policies consistent with Portland Harbour Authority's Marine Spatial Plan Policies.

[http://www.portland-port.co.uk/commercial\\_shipping/port\\_estate\\_and\\_tenants/documents/CompleteMarineSpatialPlan.pdf](http://www.portland-port.co.uk/commercial_shipping/port_estate_and_tenants/documents/CompleteMarineSpatialPlan.pdf)

Adopted December 2008.




200 m  
1000 ft

OpenStreetMap

# Consents Guidance (Flowcharts)



Activity:

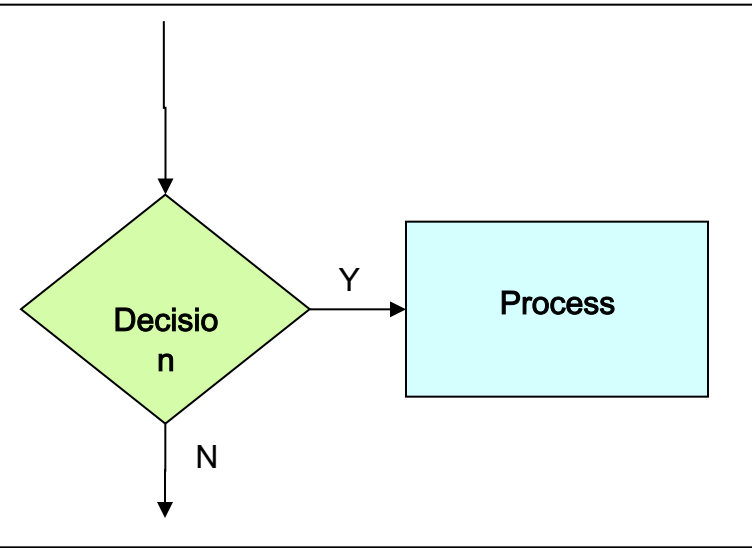
Show / Hide Key 

**The Crown Estate**  
The Crown Estate (CE) owns all of the seabed out to the 12 nms around the UK. Rental is due for areas of aquaculture; therefore a lease must be obtained from the Crown Estate for fish farming operations. For salt on production. Seabed rentals for shellfish are formula-based, linked to the amount of equipment on site and Application forms for leases and additional information:  
[http://www.thecrownestate.co.uk/aquaculture\\_leases](http://www.thecrownestate.co.uk/aquaculture_leases)  
Aquaculture in England & Wales does not currently fall under any statutory planning regime.

Apply for consent under the Coast Protection Act 1949, from the **Marine Management Organisation**. In addition to a lease from The Crown Estate, all fish farming operations in marine waters around England and Wales, will also require consent under Section 34 of the Coastal Protection Act 1949 from the Marine and Fisheries Agency (now the Marine Management Organisation) (source: The Crown Estate Website).  
<http://marinemanagement.org.uk/works/licensing/cpa.htm>

Wish to apply for a lease from the Crown Estate?

Complete a Lease Application Form with plans and any other information required. Submit to The Crown Estate in Edinburgh.



Apply for authorization from the Fish Health Inspectorate (FHI) under the **The Aquatic Animal Health (England and Wales) Regulations 2009**. The Regulations require authorization of all aquaculture production businesses (APBs). All new fish and shellfish farms are required to apply for authorization before development takes place. The main purpose of the authorization is to prevent the introduction and spread of infectious diseases within the UK (source: efishbusiness.co.uk).  
Application forms and further information:  
<http://www.efishbusiness.co.uk/authorisation/default.asp>

Require to dispose of fish waste generated on the farm?

Require to import or export fish to/ from the fish farm?

**Waste disposal**  
Through the animal by-products regulations (EC 1774/2002), fish farmers are required to dispose of fish waste through rendering or incineration. Traditional forms of disposal such as burial are no longer considered acceptable (source: DEFRA website).  
<http://www.defra.gov.uk/foodfarm/fisheries/farm-health/waste.htm>  
**Incineration**  
If you operate an incinerator that only burns fish mortalities and processing waste you must ensure approval by Animal Health.  
<http://www.defra.gov.uk/animalhealth/>  
If you incinerate animal waste you may need an environmental permit from your environmental regulator or council (source: NetRegs environmental guidance).  
<http://www.netregs.gov.uk/netregs/businesses/62193.aspx>  
**Shell disposal**  
Clean shells are classed as animal by-products, but there is an exemption that may allow them to be used as a marketable product for use in construction, drainage and gardening (source: NetRegs environmental guidance).

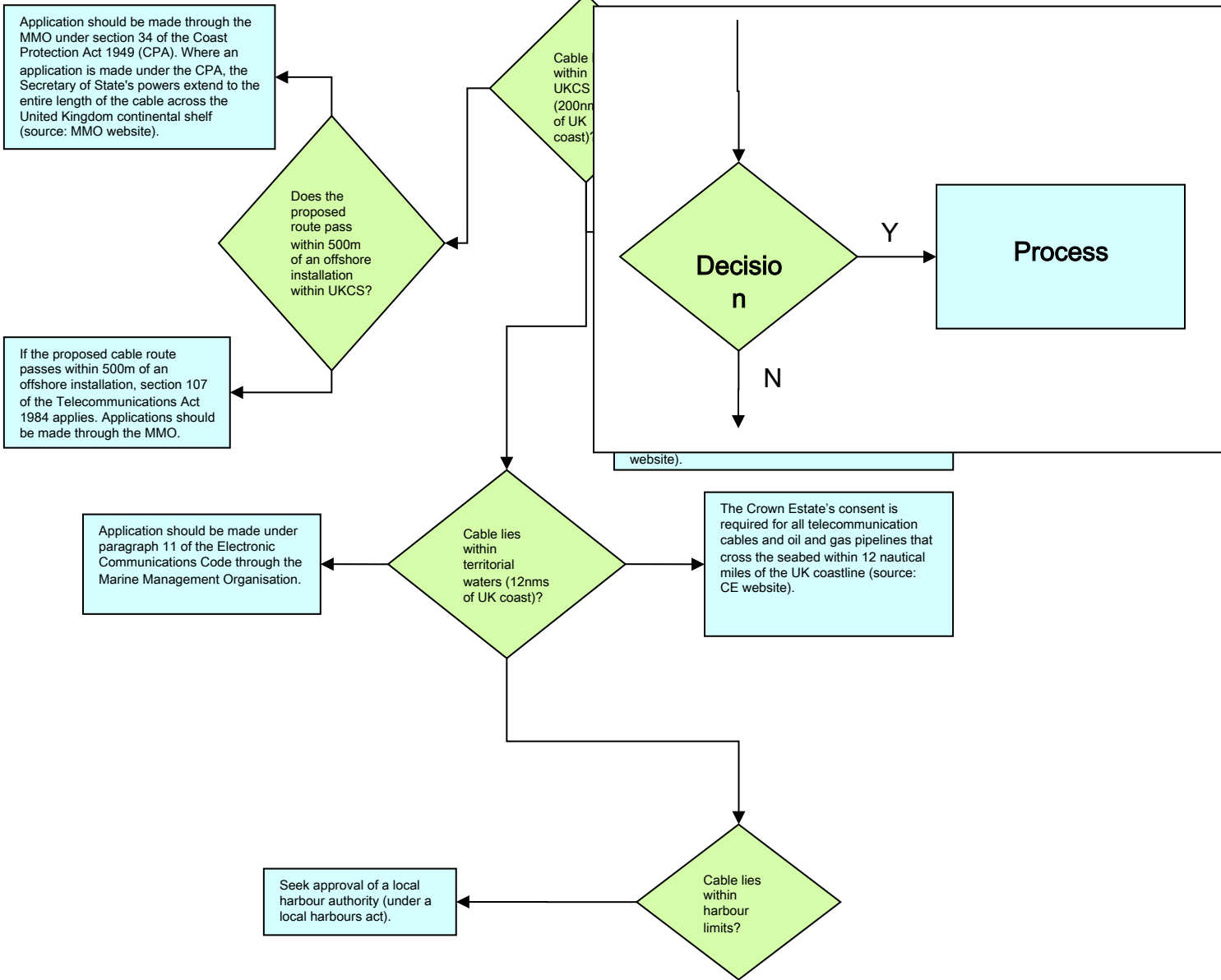
**Fish movement**  
The Environment Agency regulates all fish and crayfish introductions and removals within inland waters in England and Wales. The Fish Health Inspectorate regulates movements between authorised fish farm sites. The Fish Health Inspectorate (FHI) authorize farms, register fisheries and control fish movements where a disease is suspected or confirmed (source: efishbusiness.co.uk).  
For more information, visit the Fish Health Inspectorate's website:  
<http://www.efishbusiness.co.uk/>  
Premises that handle or process fishery products and live bivalve molluscs must be approved under European Union Regulation 883/2004 (source: FSA website).  
<http://www.food.gov.uk/>

# Consents Guidance (Flowcharts)



Activity: Cables

Show / Hide Key

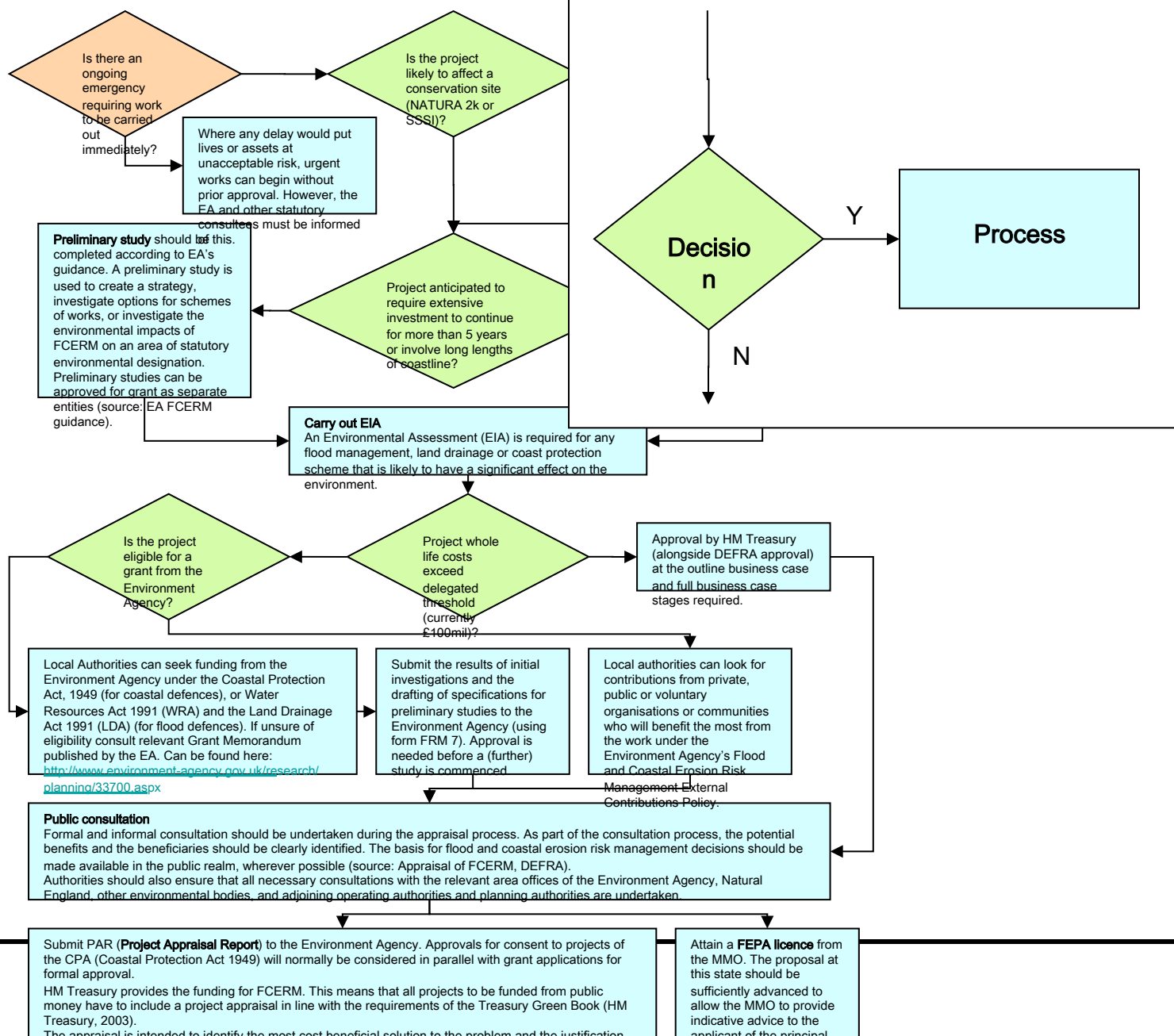


# Consents Guidance (Flowcharts)



Activity: Coastal Protection and Flood Defences

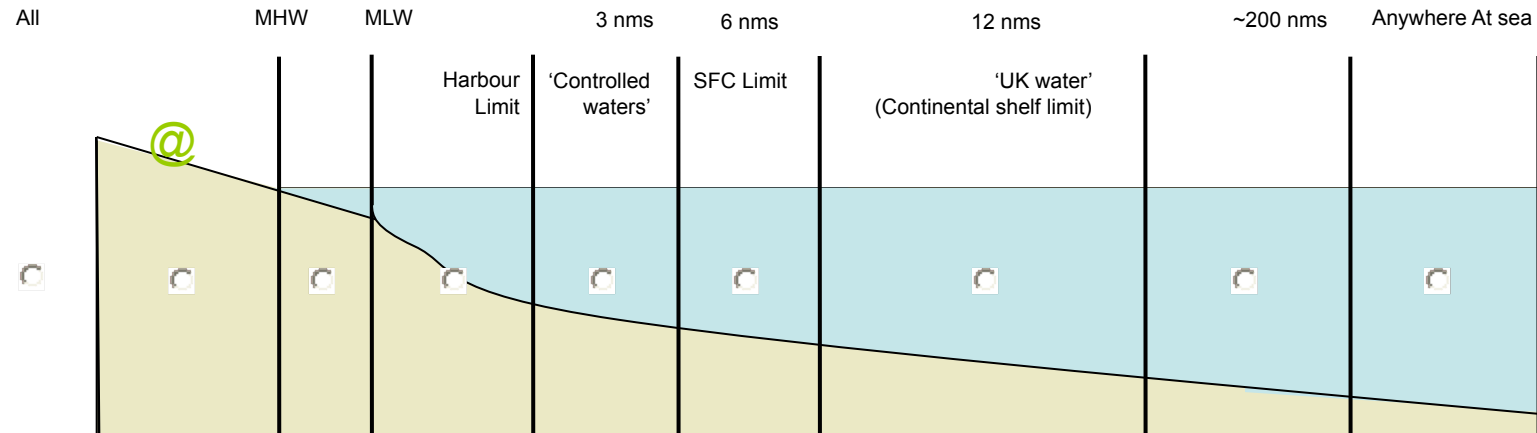
Show / Hide Key



# Policies



Legislation Level  Sector  Jurisdiction



nms - Nautical Miles  
SFC - Southern Fisheries Committee

Legislation Level	Sector	Jurisdiction	Policy name	Hyperlink	Summary	Add to basket
International	Shipping	Anywhere at sea	United Nations Convention on the Law of the Sea (UNCLOS)	<a href="#">●</a>	<a href="#">●</a>	<input type="checkbox"/>
International	Shipping	Anywhere at sea	Safety of Life at Sea (SOLAS) Convention (1974) as amended	<a href="#">●</a>	<a href="#">●</a>	<input type="checkbox"/>
International	All	Anywhere at sea	Marine Pollution Convention/Protocol (1974) as amended	<a href="#">●</a>	<a href="#">●</a>	<input type="checkbox"/>
International	All	Anywhere at sea	World summit on sustainable development	<a href="#">●</a>	<a href="#">●</a>	<input type="checkbox"/>
International	Conservation	Anywhere at sea	Convention on biological diversity	<a href="#">●</a>	<a href="#">●</a>	<input type="checkbox"/>
International	Conservation	Anywhere at sea	Bonn convention on the conservation of migratory species of wild animals (1982)	<a href="#">●</a>	<a href="#">●</a>	<input type="checkbox"/>
International	Historic Environment	Anywhere at sea	UNESCO Convention on Protection of Underwater Cultural Heritage (2001)	<a href="#">●</a>	<a href="#">●</a>	<input type="checkbox"/>
International	Conservation	Above MHW	The Convention on Wetlands of International Importance 1971 (Ramsar Convention) as amended in 1982 and 1987	<a href="#">●</a>	<a href="#">●</a>	<input type="checkbox"/>
European	All	Anywhere at sea	EC Marine Strategy Framework Directive (2008/56/EC)	<a href="#">●</a>	<a href="#">●</a>	<input type="checkbox"/>
European	All	Anywhere at sea	EC Integrated Maritime Policy for the European Union (Blue paper) COM	<a href="#">●</a>	<a href="#">●</a>	<input type="checkbox"/>





## [Dorset Marine and Coastal Explorer \(GIS\)](#)

Lorem ipsum dolor sit amet, consectetur adipisicing elit, sed do eiusmod tempor incididunt ut labore et dolore magna aliqua. Ut enim ad minim veniam, quis nostrud exercitation ullamco laboris nisi ut aliquip ex ea commodo consequat. Duis aute irure dolor in reprehenderit in voluptate velit esse cillum dolore eu fugiat nulla pariatur..

## [Consents Guidance \(Flowcharts\)](#)

Lorem ipsum dolor sit amet, consectetur adipisicing elit, sed do eiusmod tempor incididunt ut labore et dolore magna aliqua. Ut enim ad minim veniam, quis nostrud exercitation ullamco laboris nisi ut aliquip ex ea commodo consequat. Duis aute irure dolor in reprehenderit in voluptate velit esse cillum dolore eu fugiat nulla pariatur.

## [Policy Viewer](#)

Lorem ipsum dolor sit amet, consectetur adipisicing elit, sed do eiusmod tempor incididunt ut labore et dolore magna aliqua. Ut enim ad minim veniam, quis nostrud exercitation ullamco laboris nisi ut aliquip ex ea commodo consequat. Duis aute irure dolor in reprehenderit in voluptate velit esse cillum dolore eu fugiat nulla pariatur.

## [Checkout](#)

Lorem ipsum dolor sit amet, consectetur adipisicing elit, sed do eiusmod tempor incididunt ut labore et dolore magna aliqua. Ut enim ad minim veniam, quis nostrud exercitation ullamco laboris nisi ut aliquip ex ea commodo consequat. Duis aute irure dolor in reprehenderit in voluptate velit esse cillum dolore eu fugiat nulla pariatur.

## About Dorset Coastal Explorer Planning



Q Who will use it?

A Planning professionals, developers, consultants, statutory/non-statutory consultees, academics etc.

Q What will they use it for?

A To support decision-making and planning in the marine and coastal zones.

Q Who is providing the system?

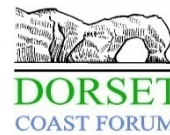
A The Dorset Coast Forum, a strategic coastal partnership.

Q Why is the system being provided?

A It is one deliverable of the C-SCOPE project (Combining Sea and Coastal Planning in Europe), a three year project, part funded by the European Union Interreg IV A '2 seas programme'.



**c~scope**  
Combining Sea and Coastal  
Planning in Europe





# Checkout

Report title:	<input type="text" value="My shopping basket"/>	<input type="button" value="Empty"/> <input type="button" value="Save"/>
Report compiled by:	<input type="text" value="Default user"/>	
Compilation Date:	<input type="text" value="23/08/2011"/>	

## Dorset Coast Forum



### My shopping basket

Compiled by: Default user on 23/08/2011

#### Policies

##### International

United Nations Convention on the Law of the Sea (UNCLOS)

Remove from basket

##### European

##### Regional and Local

Portland Harbour Marine Spatial Plan - Policy 1 – Strategic Policy

Remove from basket

#### Flowcharts

Cables

Remove from basket



# Checkout

Report title: My shopping basket

Report compiled by: Default user

Compilation Date: 25/01/2011

Empty



## Dorset Coast Forum

### My shopping basket

Compiled by: Default user on 25/01/2011



## Policies

United Nations Convention

Remove from basket

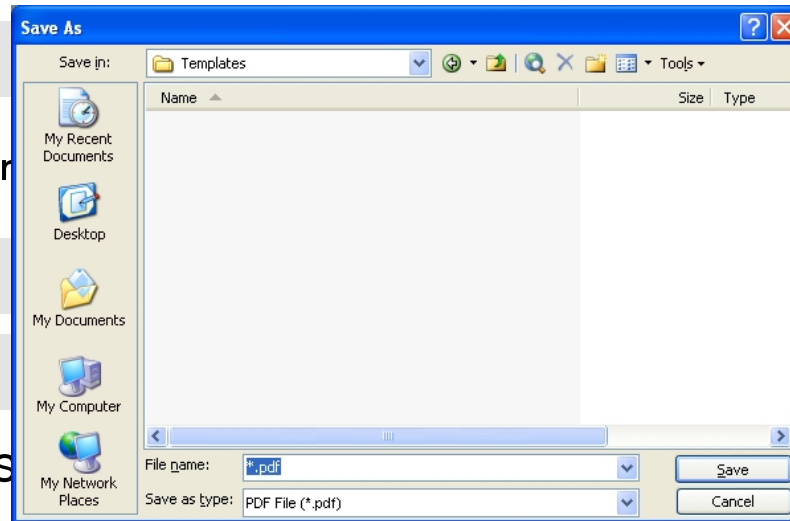
Portland Harbour Marine S

Remove from basket

## Flowcharts

Cables

Remove from basket





# Checkout

Report title:

Report compiled by:

Compilation Date:

## Dorset Coast Forum



### My shopping basket

Compiled by: Default user on 25/01/2011

#### Policies

##### International

United Nations Convention on the Law of the Sea (UNCLOS)

Remove from basket

##### European

##### Regional and Local

Portland Harbour Marine Spatial Plan - Policy 1 – Strategic Policy

Remove from basket

#### Flowcharts

Cables

Remove from basket