



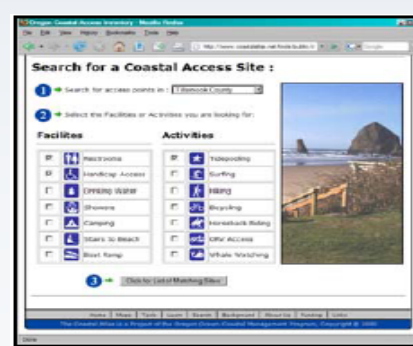
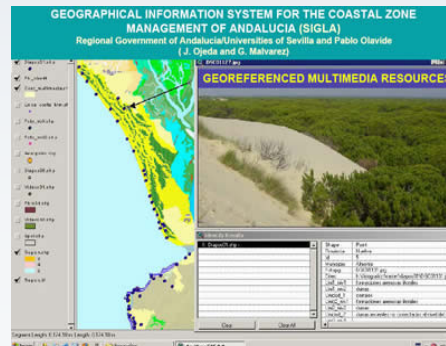
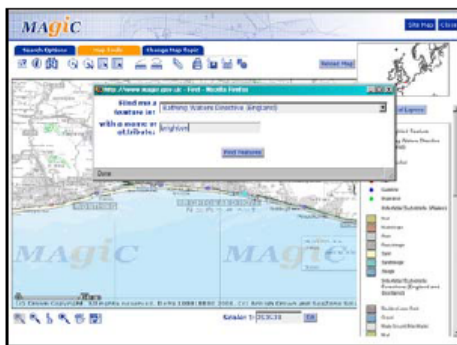
Policy Options for Coastal Information Systems in relation to ICZM

ICAN
International Coastal Atlas Network

Ned Dwyer
*Coastal & Marine Research Centre,
University College Cork, Ireland*



Analysis of over 40 CIS and consultation with a wide range of stakeholders provides direction and options for possible developments of CIS which can respond better to user needs





ICZM Recommendations - Impact Assessment

Background

Impact Assessment towards a follow-up to the EU ICZM Recommendation

- On-line public consultation
- Stakeholder Meeting in Brussels
- Studies on a range of topics including:
 - Options for coastal information systems
(carried out by Thetis Spa, Italy)

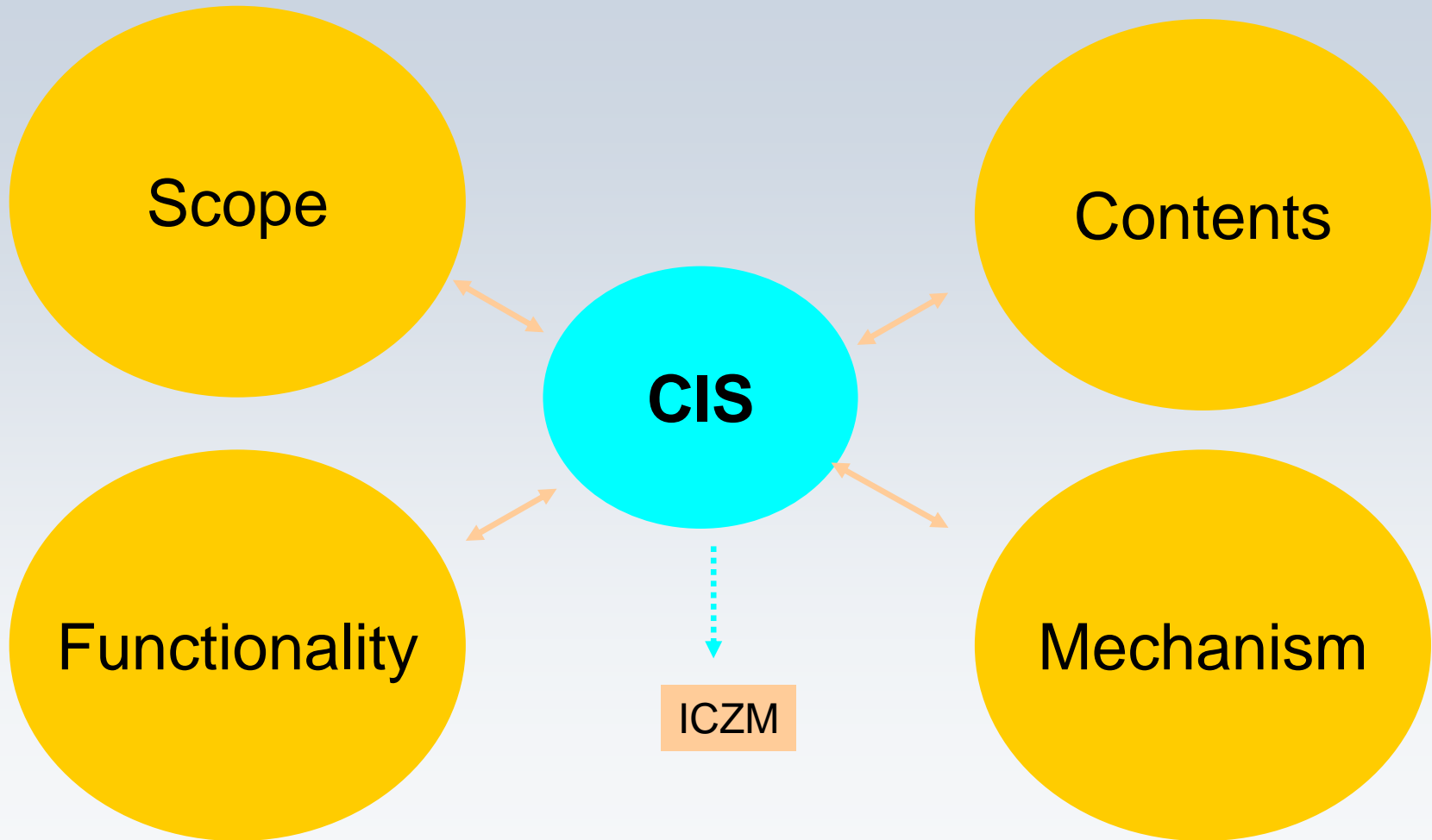


Impacts of Coastal Information Systems

Project Methodology

- Review of > 40 CIS in Europe and beyond
- Fifteen chosen for in-depth analysis
- Range of requirements for CIS
 - review and in-depth analysis
 - questionnaires and interviews of 15 CIS
 - workshop in Marseilles
 - synthesis of results

Possible Requirements for CIS



Scope

- **Include end-user in the system design .**
- **Address different user expectations and needs**
- **Adopt an ecosystem-based approach in the definition of the CIS' context and geographic area of application**
- **Continue and strengthen the effort in matching the INSPIRE Directive**

Contents

- **Improve economic and in particular social and governance information within CIS**
- **Improve availability of information resulting from the integrated analysis of data related to different topics**
- **Improve availability of time-series data**
- **Develop and implement a common ontology for coastal and marine information**

- **Improve functionalities directly supporting ICZM decision making in a short and long term perspective**
- **Improve diffusion and innovation of e-participation tools**
- **Integrate 3D data and develop 3D tools**
- **Ensure data and metadata availability**
- **Improve availability of geospatial data and CIS functions related to climate change**

Mechanism

- **Establish clear link and cooperation between the structure responsible for the CIS management and operation and the structure responsible for the implementation of the ICZM process.**
- **Improve the use of protocols facilitating geo-spatial data sharing**
- **Develop on-line tools to measure the real use of CIS**
- **Participate in CIS and/or ICZM networks**

Ring fence options which are already required in other policy areas

- **Continue and strengthen the effort in matching the INSPIRE Directive**
- **Ensure data and metadata availability**

These are considered baseline – must do



Three Policy Options

Analysis led to 3 policy options

**Contents
Driven**

**Functions
Driven**

**Mechanism
Driven**

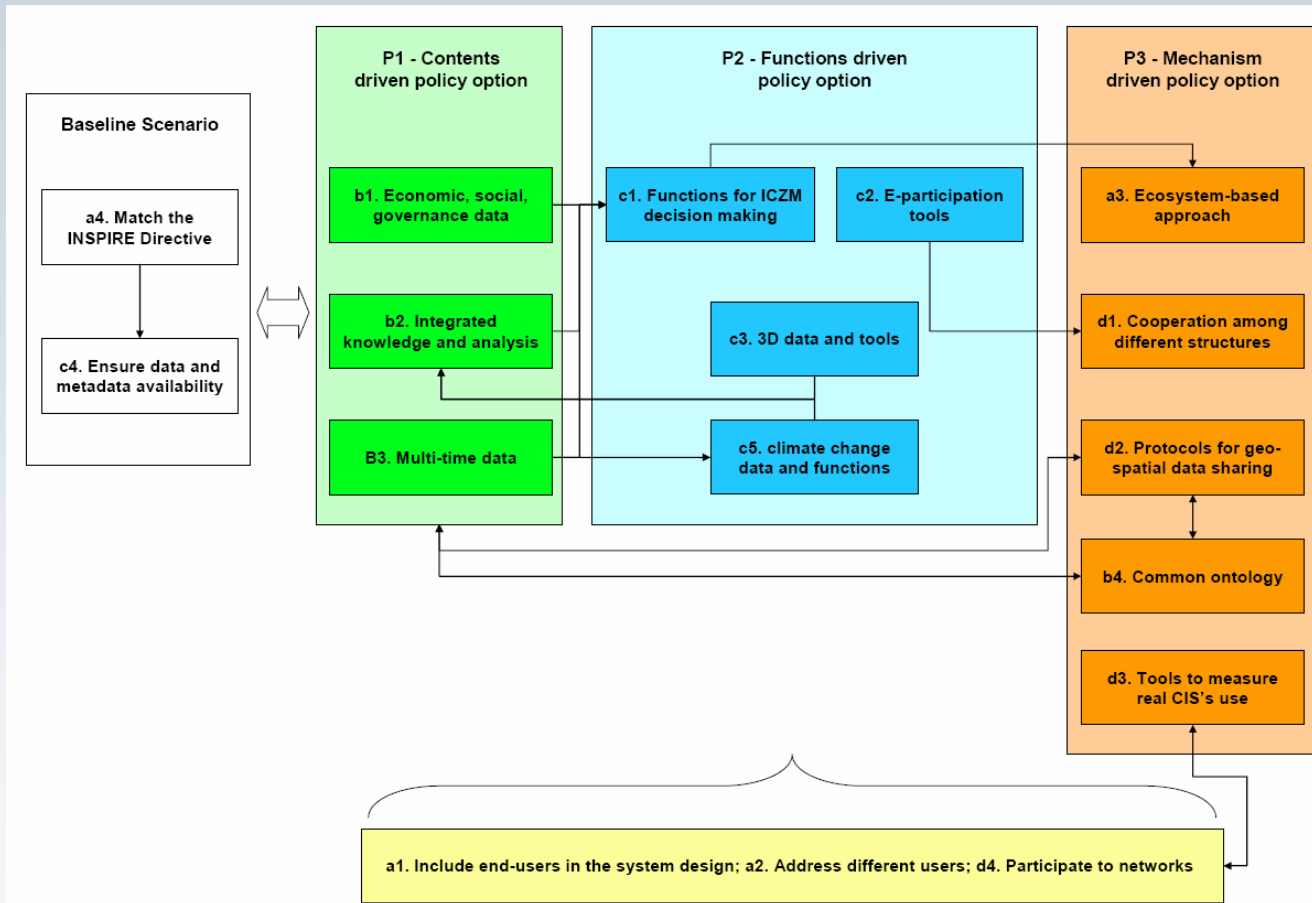


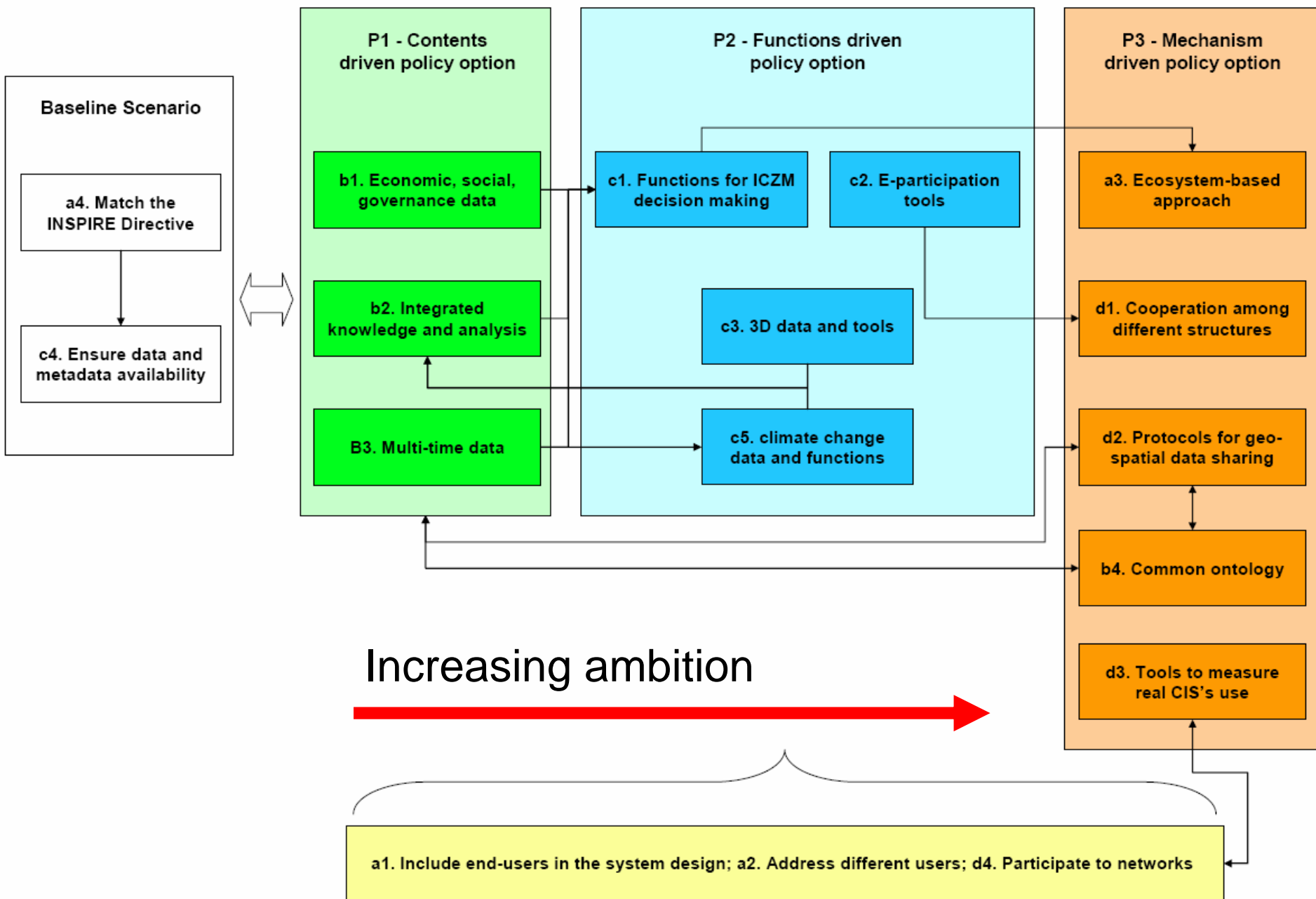
Towards improved CIS

Three options are common to all policy options

- Include end-user in the system design
- Address different user expectation and needs
- Participate in CIS and/or ICZM networks

Details of Policy Options







Relevance to objectives of workshop

- User views/requirements underpin all developments
- CIS can be viewed from different perspectives
- Different objectives (policies) influence development focus
- Need for constant adaptation/ upgrade of CIS