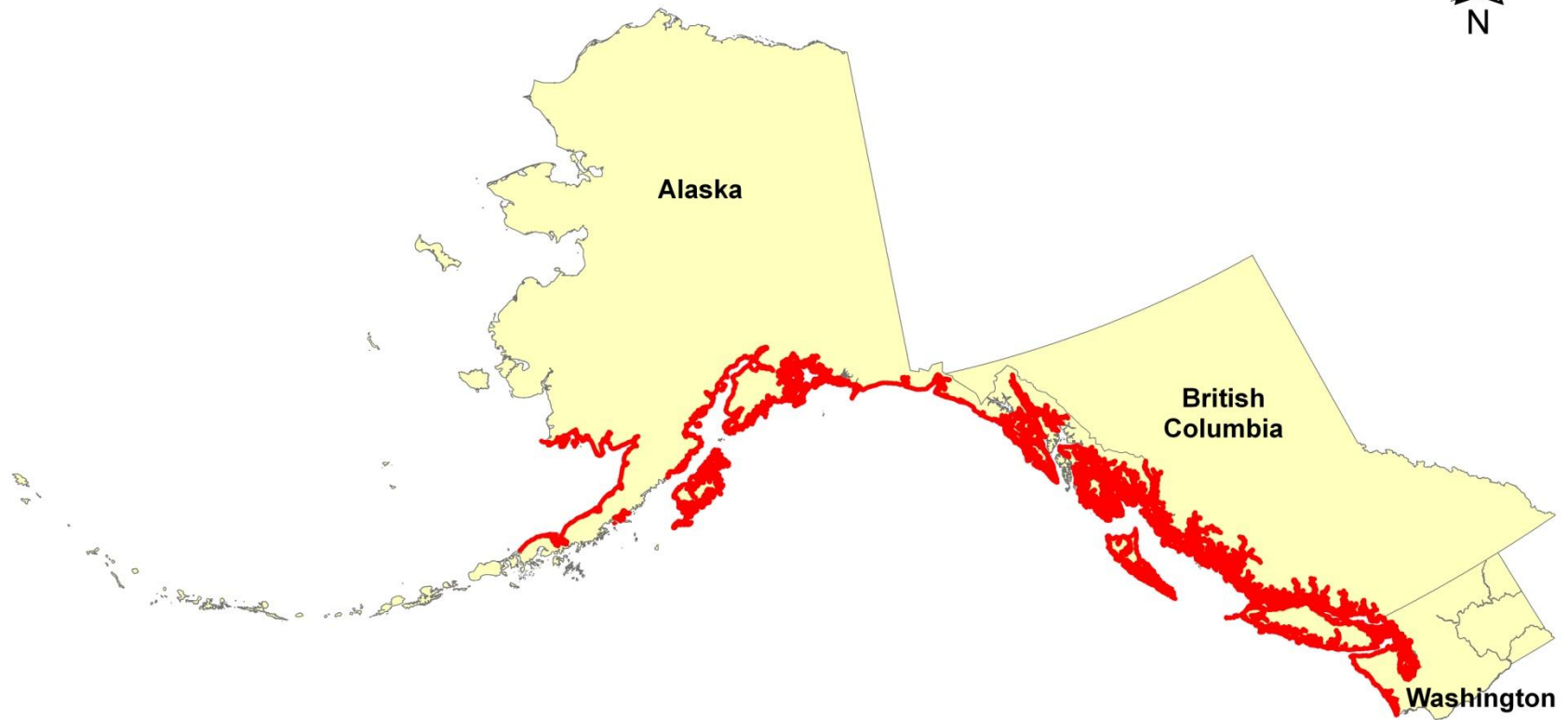


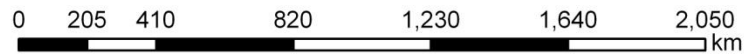
Update on the BC Coastal Resources Information Management System (CRIMS)



ShoreZone Imagery Extent in the North Pacific



— Imaged coastline (84,915 km)



Map date: 12 January 2009

BC Coastal Resource Information Management System (CRIMS)

- **ShoreZone***
- Aquaculture
- Marine Plants
- Birds
- Marine Mammals
- Commercial Fisheries
- Recreational Fisheries
- Human Use



Directions . . .

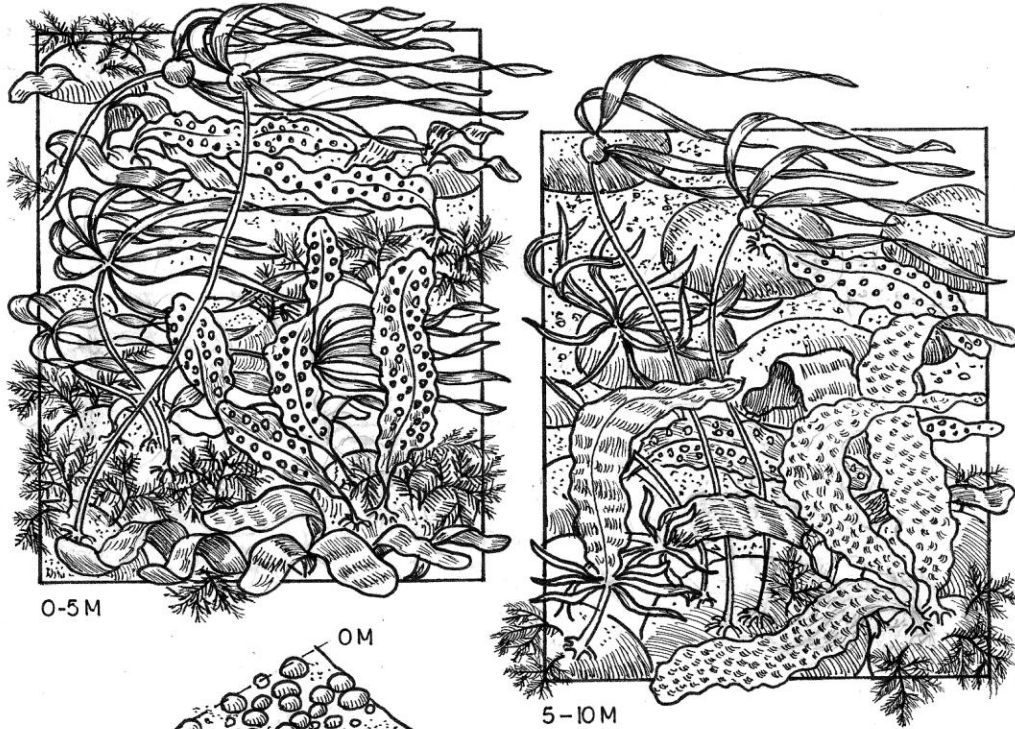
A scenic landscape photograph showing a rocky coastline with several evergreen trees in the foreground. The background is a misty, hazy view of a forested area, possibly a bay or inlet, under a cloudy sky. The overall tone is cool and atmospheric.

- basic web access via *MS Virtual Earth* (July 09)
- ArcGIS Server (AJAX) (Dec 09)
- BC ShoreZone fully available via Discovery Service, GeoBC (zipped shape files)
- coastal videography posting – uncertain due to funding
- federal-provincial data sharing agreement close

Issues . . .

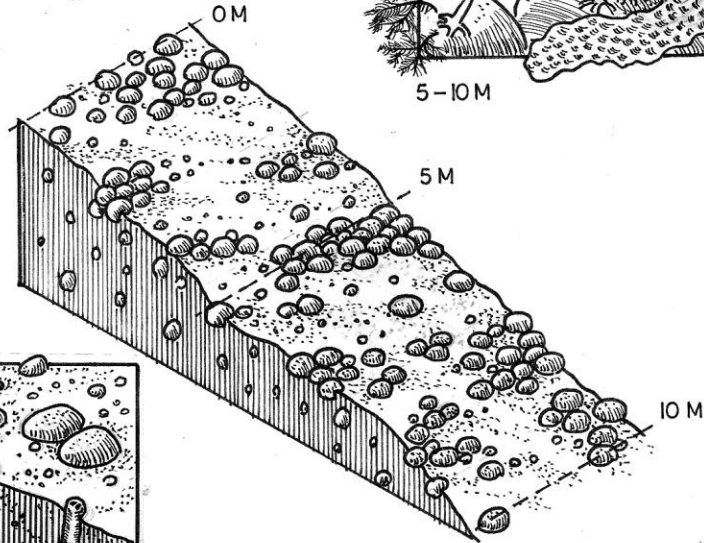
A scenic landscape photograph of a forested island in a lake. The island is covered in dense evergreen trees and sits on a rocky outcrop. The water is calm, reflecting the trees and the sky. In the background, a misty forested hillside is visible under a cloudy sky.

- consistent funding
- data: inconsistency in third-party data
unevenness
data quality (standards)



0-5 M

5-10 M



5 M

10 M



Nearshore Habitats (<20m)

- no substrate info
- no current or energy measurements
- most depth info single beam sounding (70s, 80s); multibeam “white stripe” zone

Alaska

Eelgrass Distribution
(5,183 km; 16%)

British
Columbia

“old data”

Washington

ShoreZone is a primary data source
collected to a standard
georeferenced imagery is data

All Data is not Equal
threshold level for data legitimacy

West Coast Atlas
who is the client/customer ?

