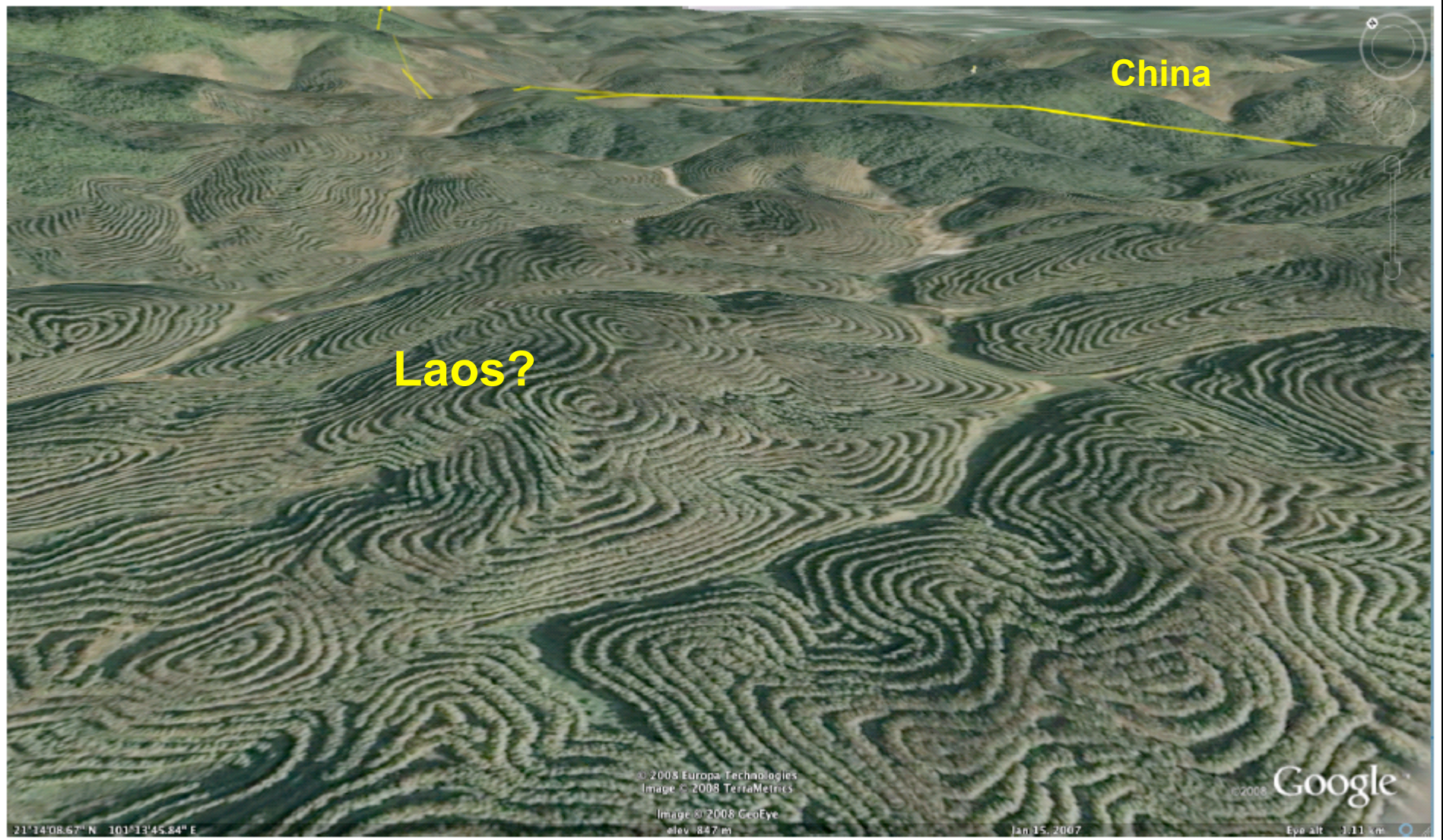


Technical matters

The practice and politics of geo-referencing



Michael B. Dwyer, UC Berkeley, Energy & Resources Group
2010 Association of American Geographers Annual Meeting



China

Laos?

21°14'08.67" N 101°13'45.84" E

© 2008 Europa Technologies
Image © 2008 TerraMetrics
Image © 2008 GeoEye
elev: 847 m

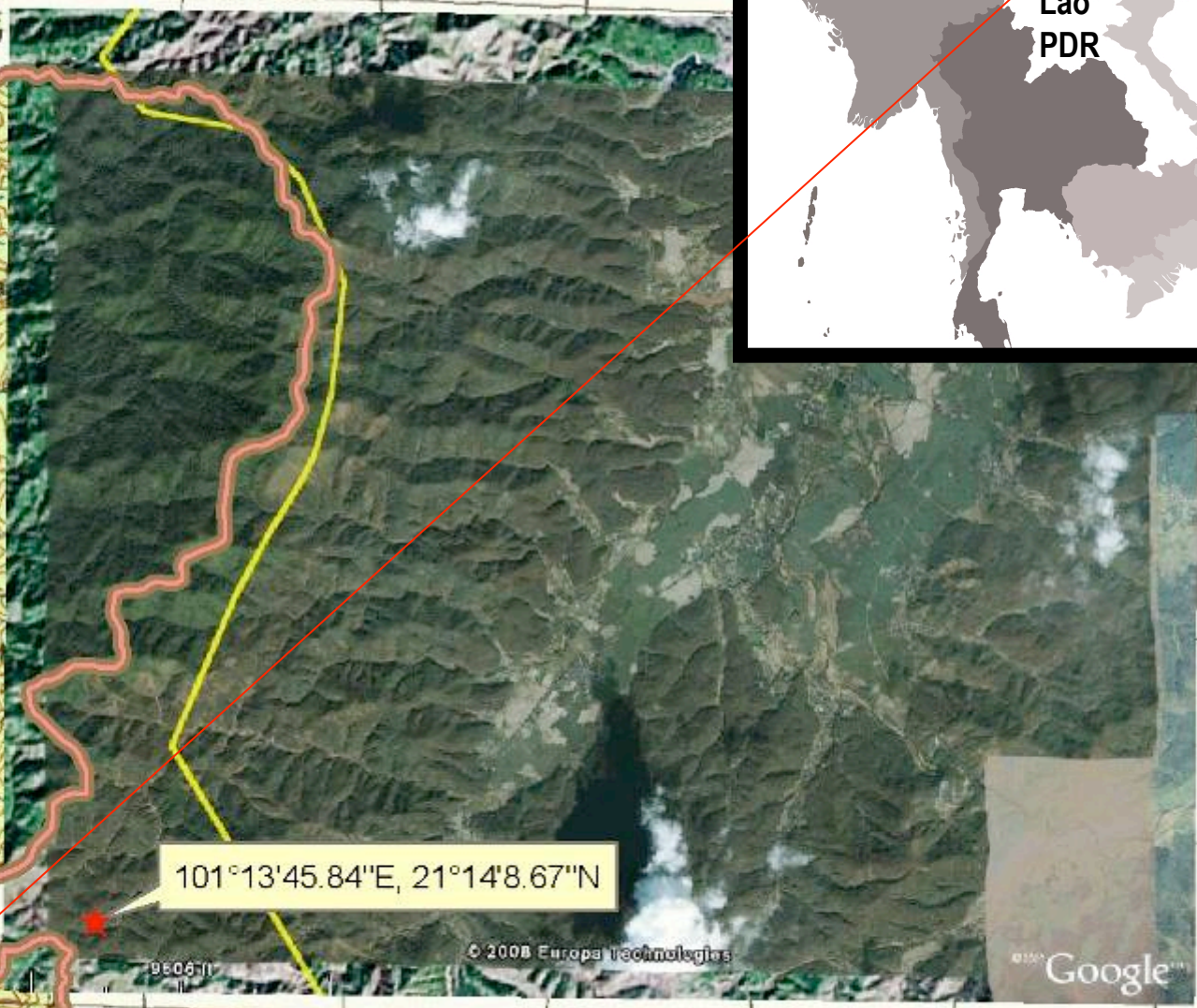
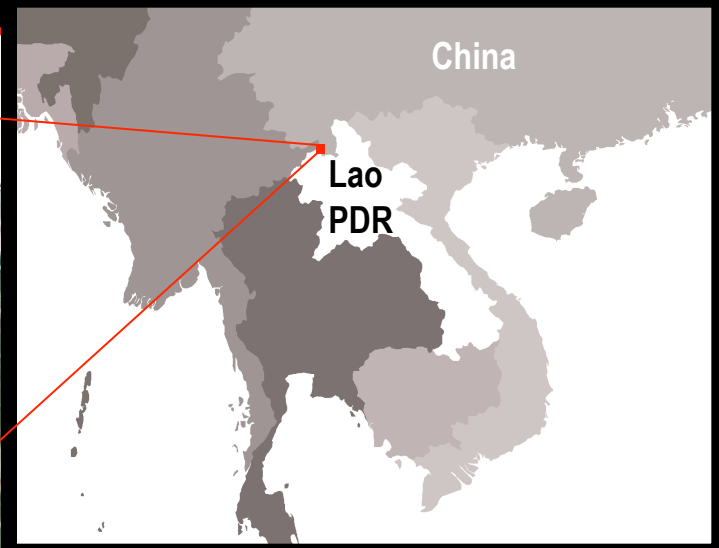
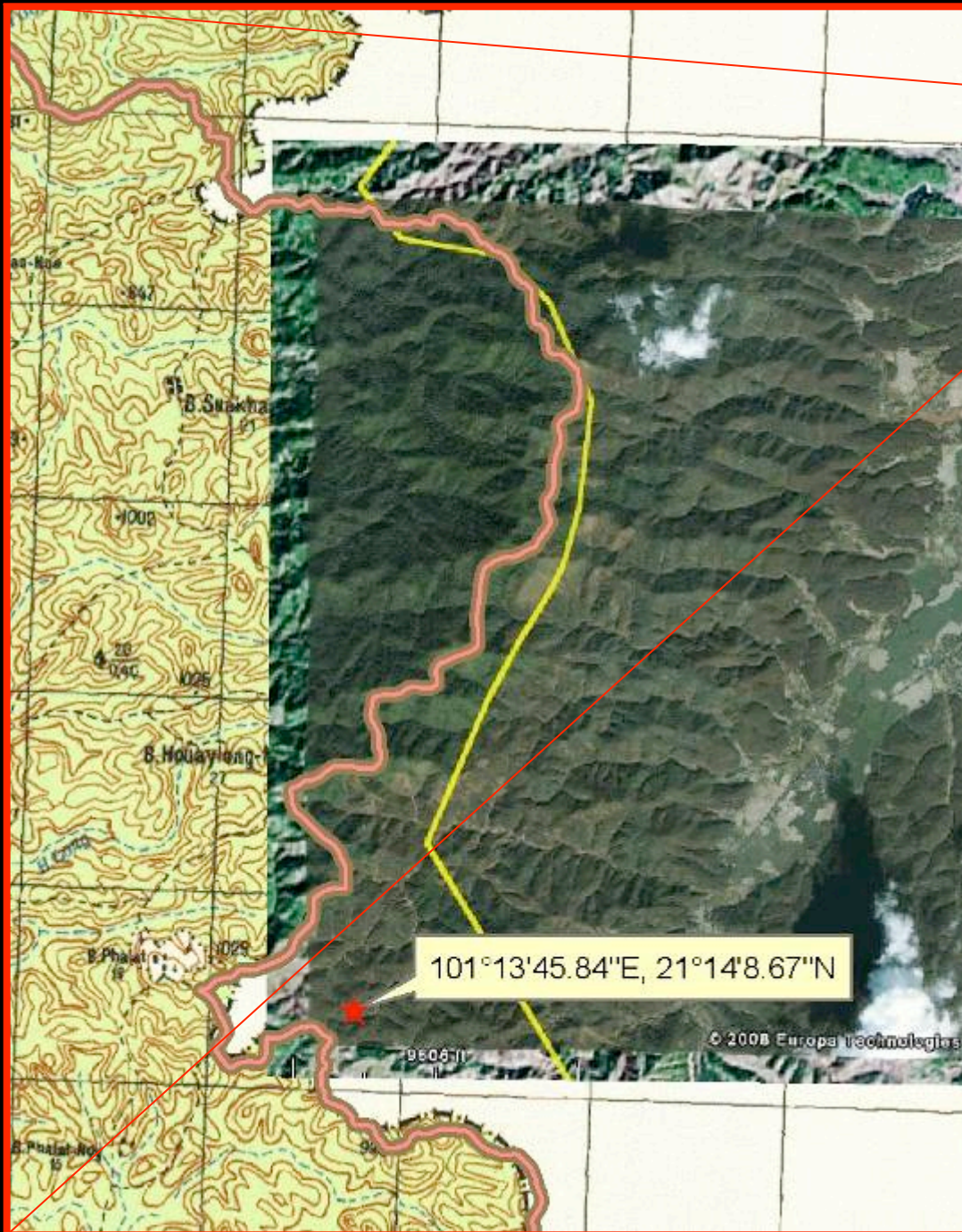
© 2008 Google

Jan 15, 2007

Eye alt: 1.11 km

GoogleEarth imagery, November 2008

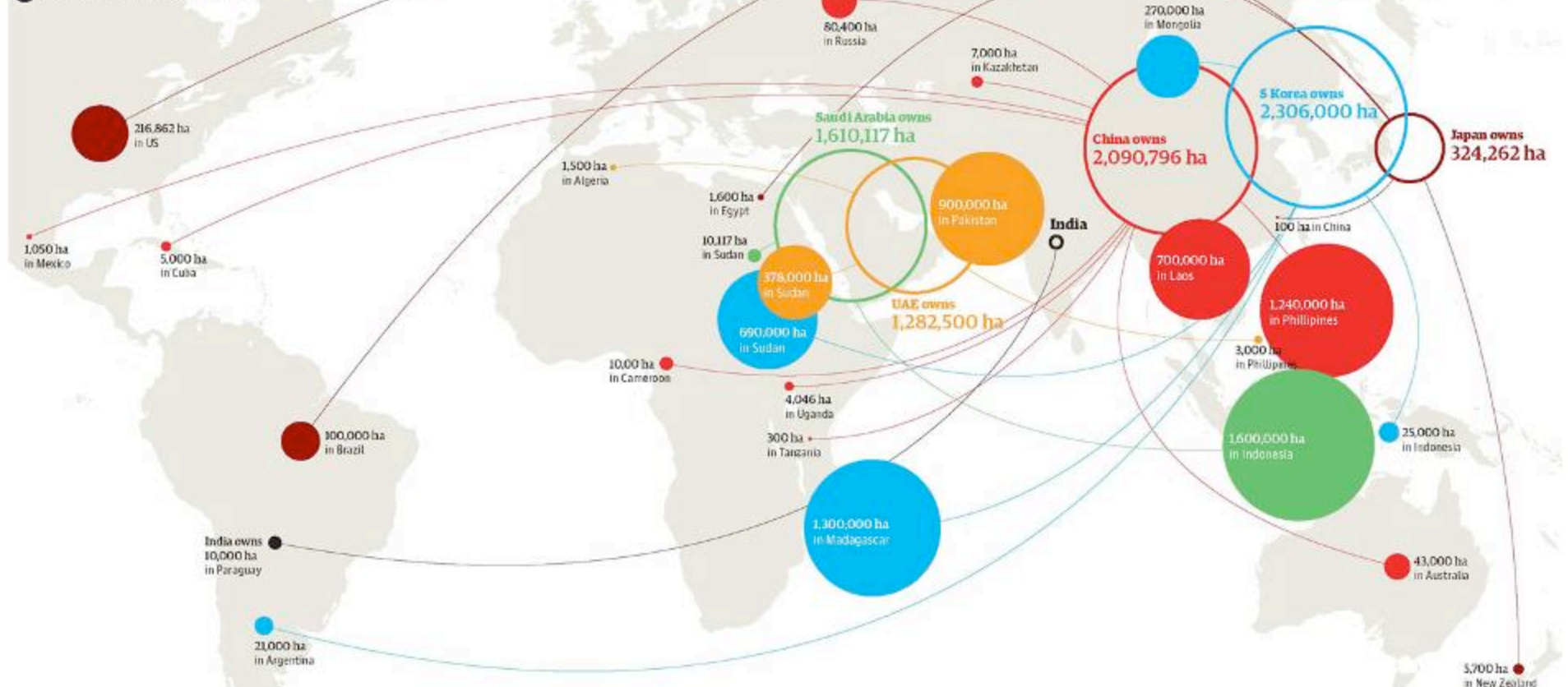
21°14'08.67" N 101°13'45.84" E



World land grab

Land purchased by government and private companies from each country, where areas are known

○ Total area purchased by country
● Countries in which land has been purchased



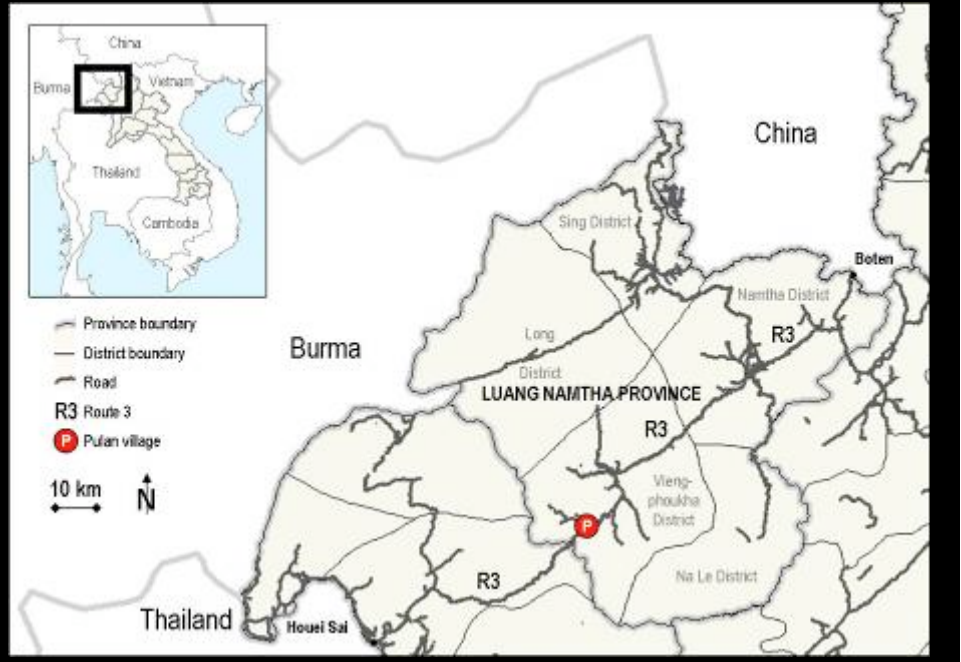
“The world map is being redrawn. Over the past six months, China, South Korea, Japan, Saudi Arabia, Kuwait and other nations have been buying and leasing huge quantities of foreign land for the production of food or biofuels for domestic consumption. It’s a modern day version of the 19th-century scramble for Africa.”¹

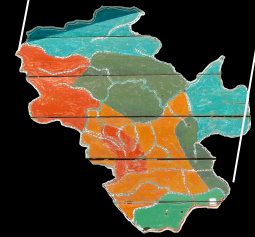
“A new geopolitics of hunger”²

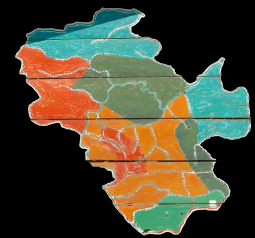
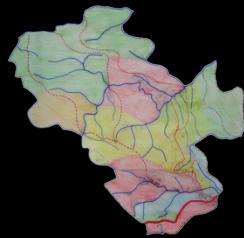
1. *The Guardian UK*, 22 November 2008

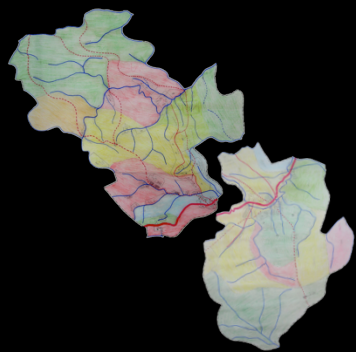
2. Joao Pedro Stedile (MST, Via Campesina), 2008

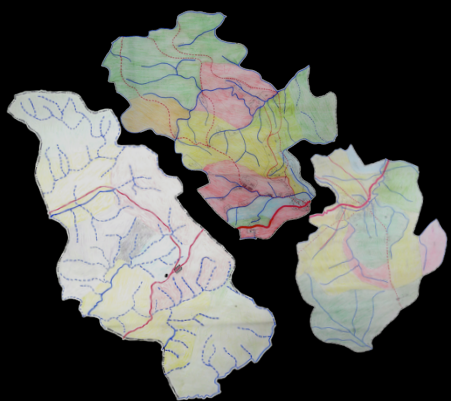
I. Existing legal architecture



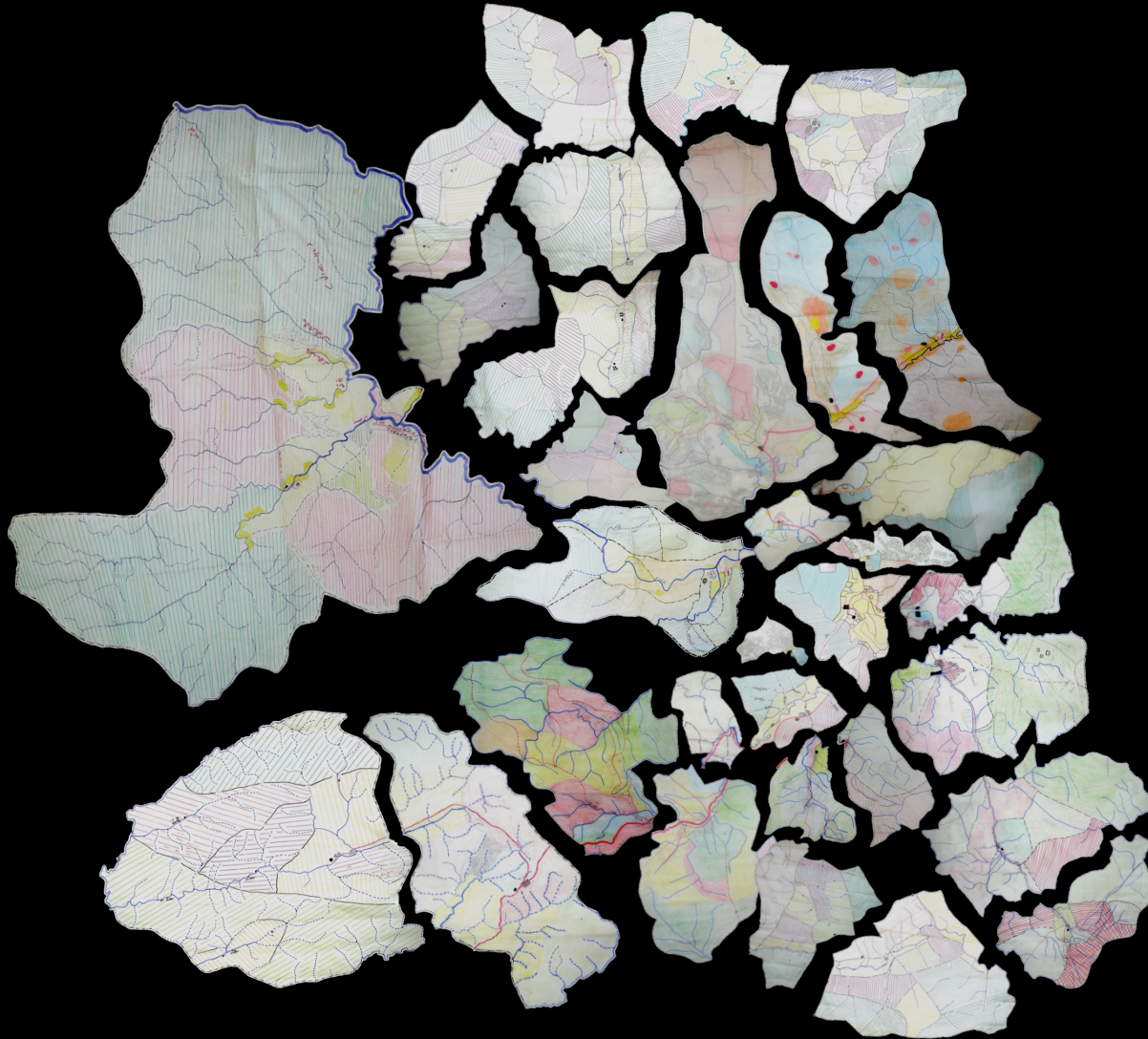








Existing legal architecture



II. Concession-based development

“Concession” projects:

“2+3” projects:

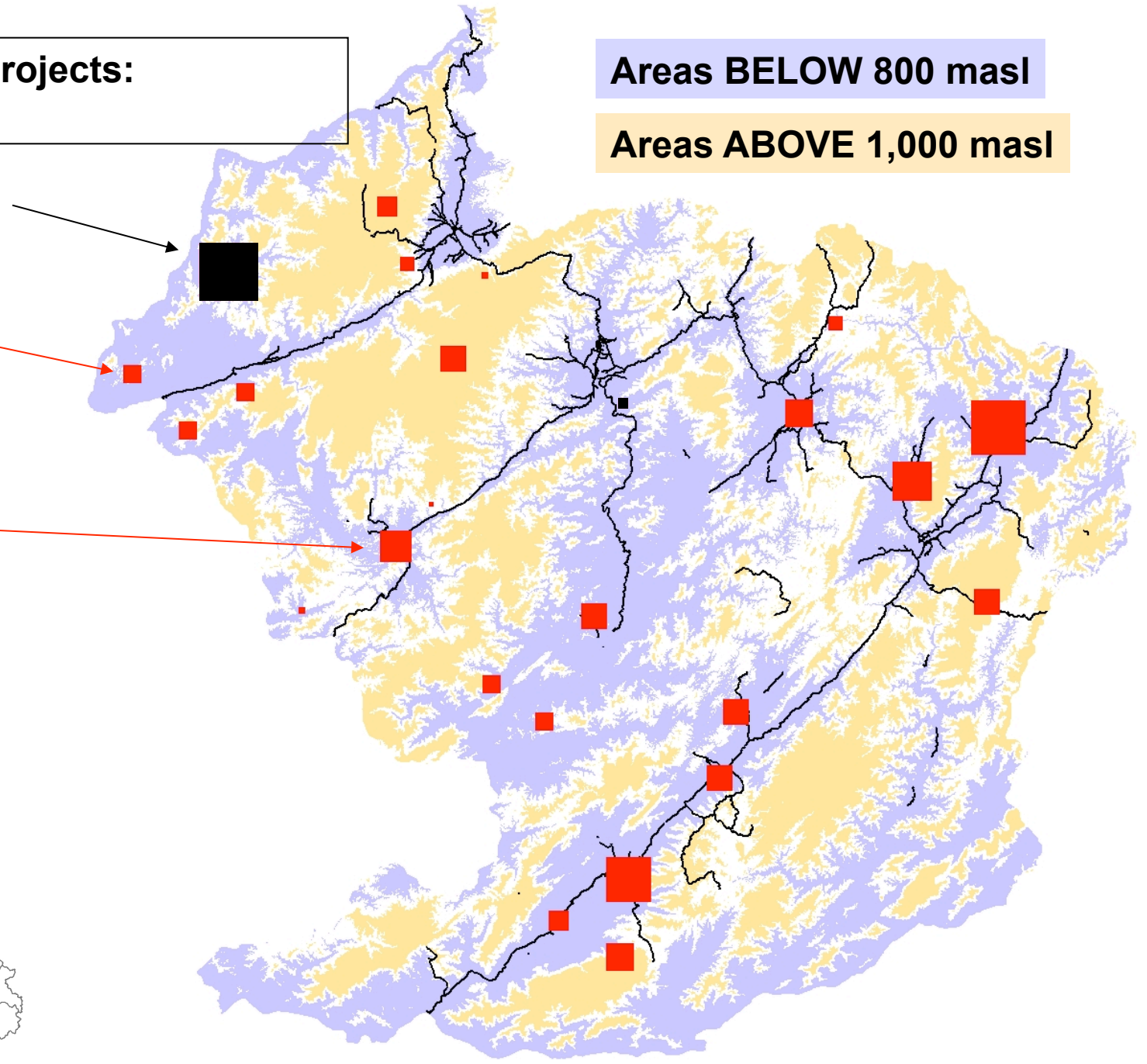
Areas BELOW 800 masl

Areas ABOVE 1,000 masl

10,000 ha

1,000 ha

3,000 ha



“Concession” projects
“2+3” projects

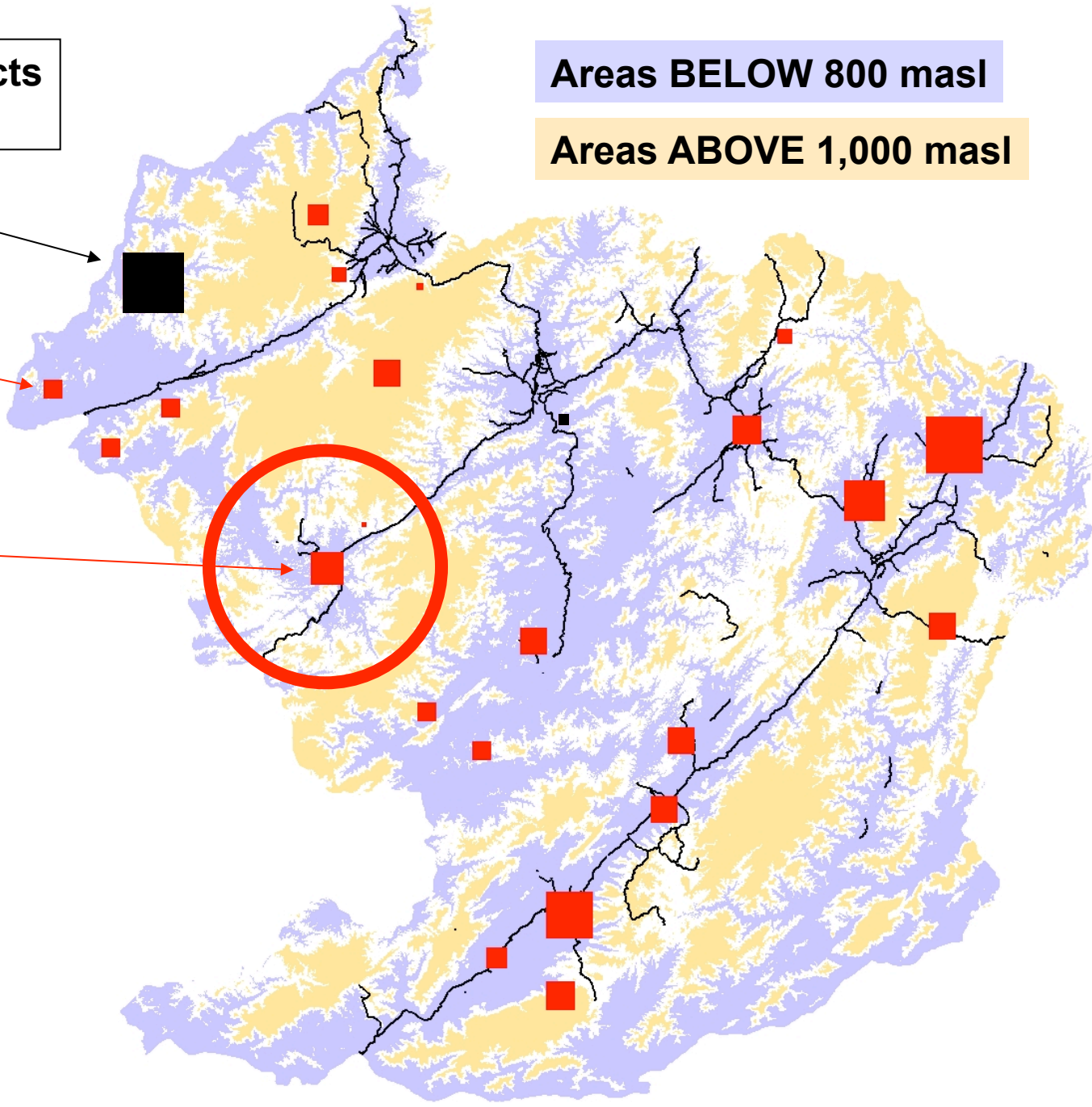
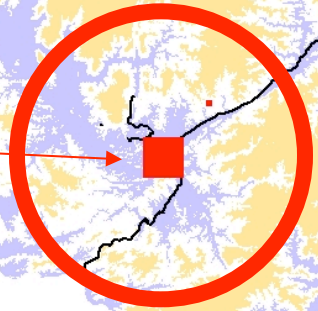
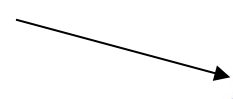
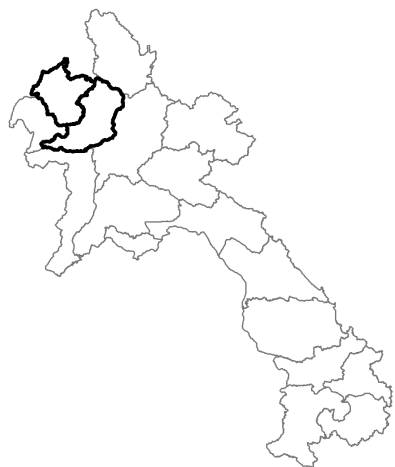
Areas BELOW 800 masl

Areas ABOVE 1,000 masl

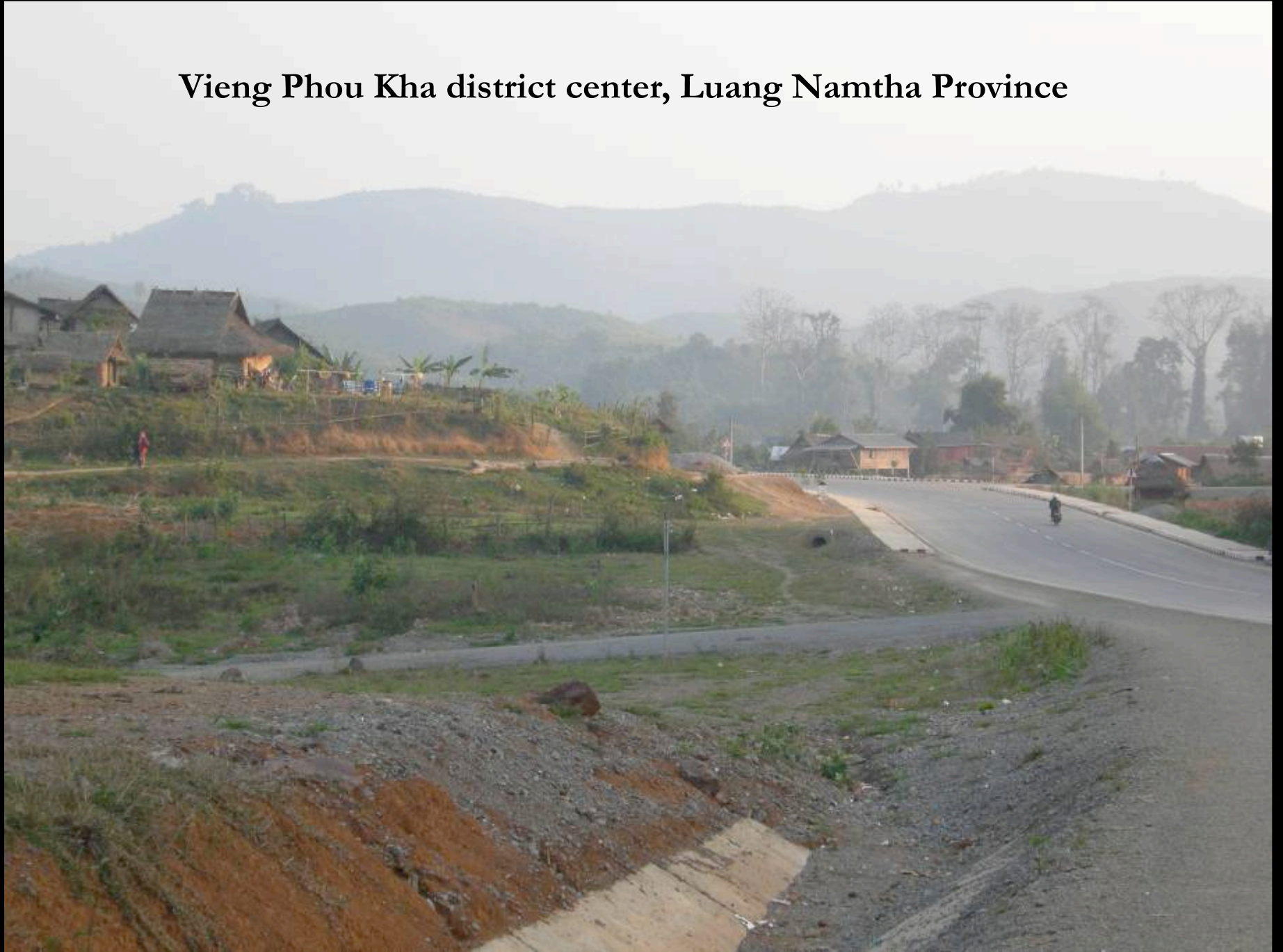
10,000 ha

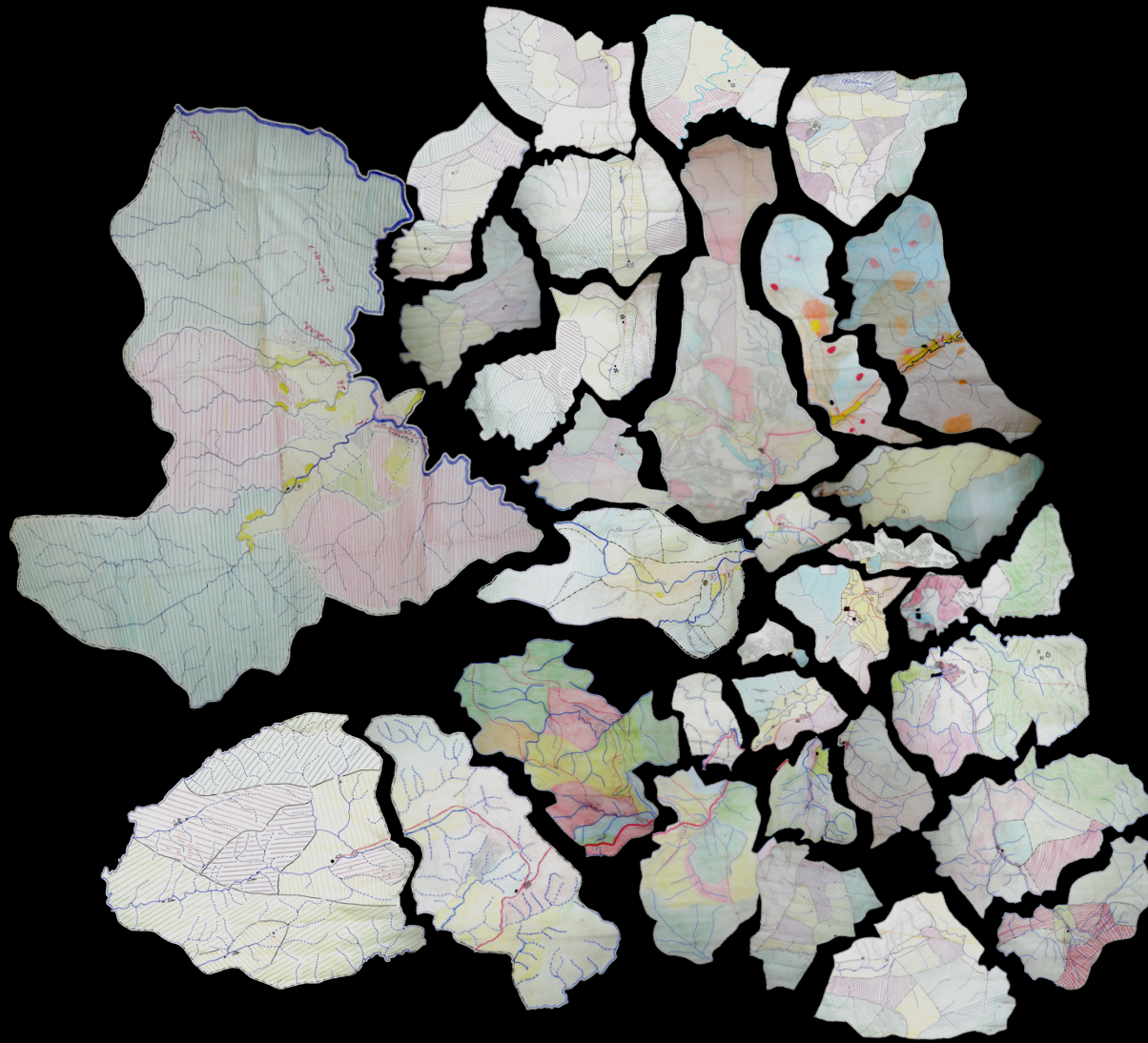
1,000 ha

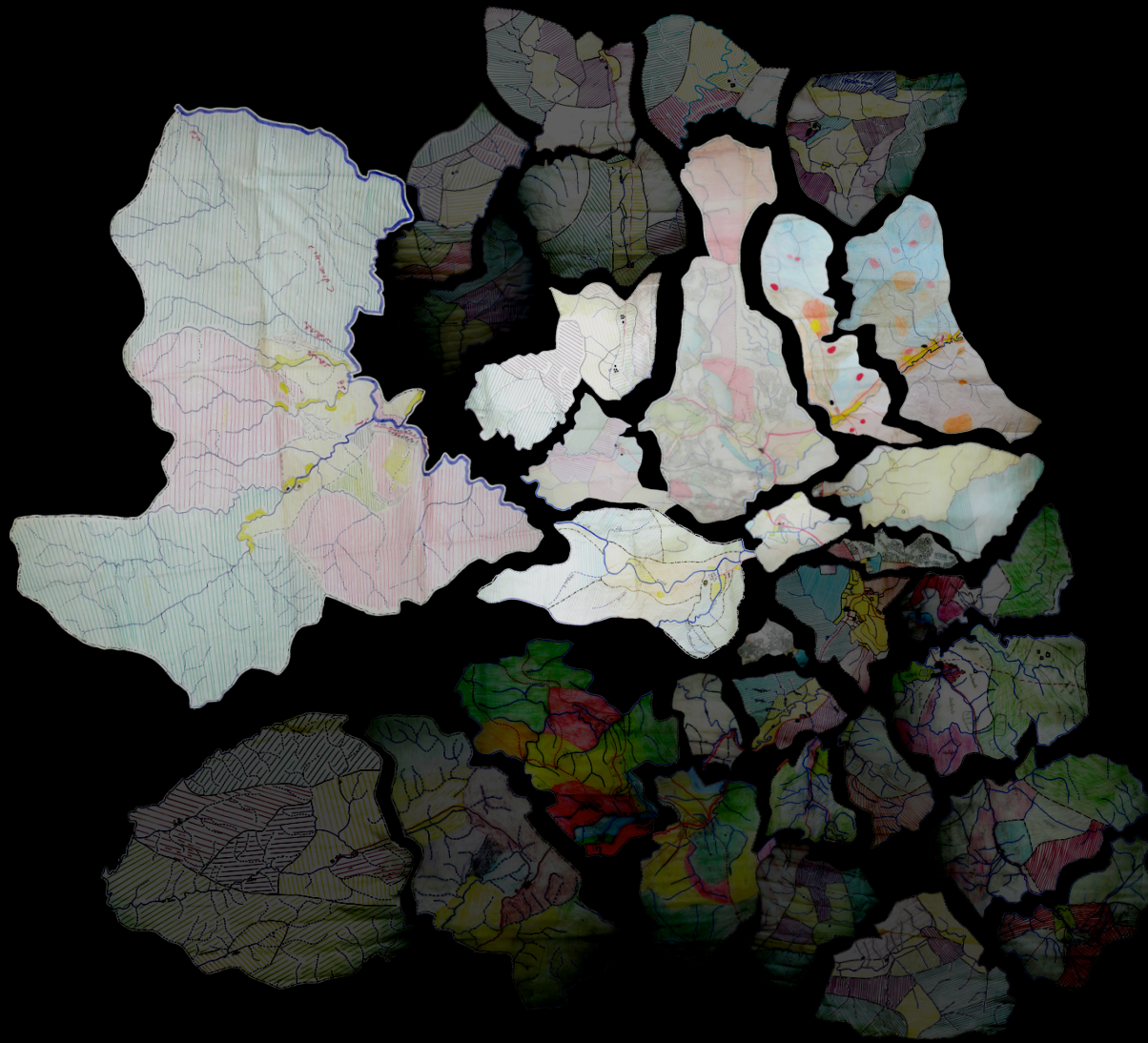
3,000 ha



Vieng Phou Kha district center, Luang Namtha Province

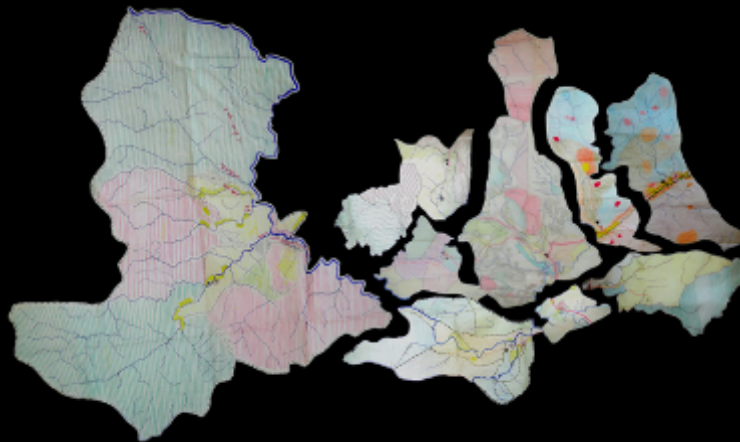






3,000 ha quota

Land use map of target villages for rubber planting promotion, Zhen Hua Trading Company, Ltd.



ເມັດສາທາງພື້ນ	ເນື້ອທີ່: ວັດ
6.818,21 ວັດ	720 ວັດ
4.419 ວັດ	568 ວັດ
2.627 ວັດ	759 ວັດ
611,8 ວັດ	440 ວັດ
912 ວັດ	565 ວັດ
1.517 ວັດ	820 ວັດ
1.589 ວັດ	475 ວັດ
3.932 ວັດ	766 ວັດ
3.055 ວັດ	1.492 ວັດ
1.159,5 ວັດ	1.004 ວັດ
3.016 ວັດ	672 ວັດ
9.304 ວັດ	600 ວັດ



ສັນຍາ	ປຸງ	ເນື້ອທີ່	ເນື້ອທີ່
ເນື້ອທີ່	ວັດ	6.818,21 ວັດ	720 ວັດ
ເນື້ອທີ່	ວັດ	4.419 ວັດ	568 ວັດ
ເນື້ອທີ່	ວັດ	2.627 ວັດ	759 ວັດ
ເນື້ອທີ່	ວັດ	611,8 ວັດ	440 ວັດ
ເນື້ອທີ່	ວັດ	912 ວັດ	565 ວັດ
ເນື້ອທີ່	ວັດ	1.517 ວັດ	820 ວັດ
ເນື້ອທີ່	ວັດ	1.589 ວັດ	475 ວັດ
ເນື້ອທີ່	ວັດ	3.932 ວັດ	766 ວັດ
ເນື້ອທີ່	ວັດ	3.055 ວັດ	1.492 ວັດ
ເນື້ອທີ່	ວັດ	1.159,5 ວັດ	1.004 ວັດ
ເນື້ອທີ່	ວັດ	3.016 ວັດ	672 ວັດ
ເນື້ອທີ່	ວັດ	9.304 ວັດ	600 ວັດ

ມາດຕາສ່ວນ 1:60.000

III. Implications

1. Technical assistance vs. political intervention →
Techno-political engagement

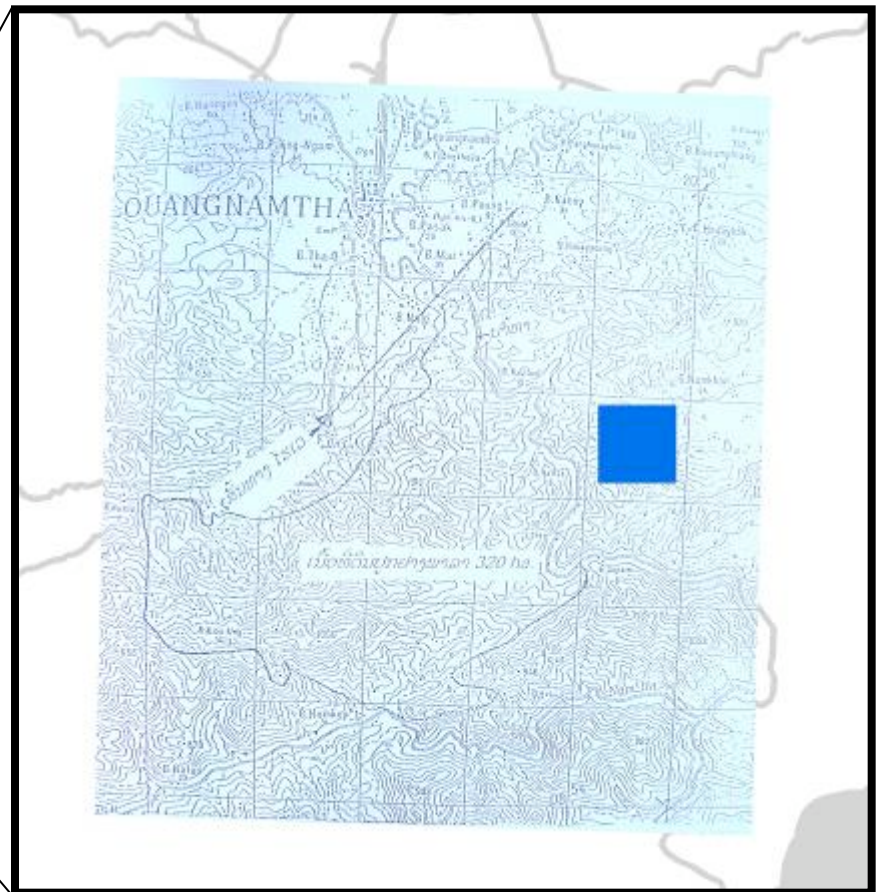
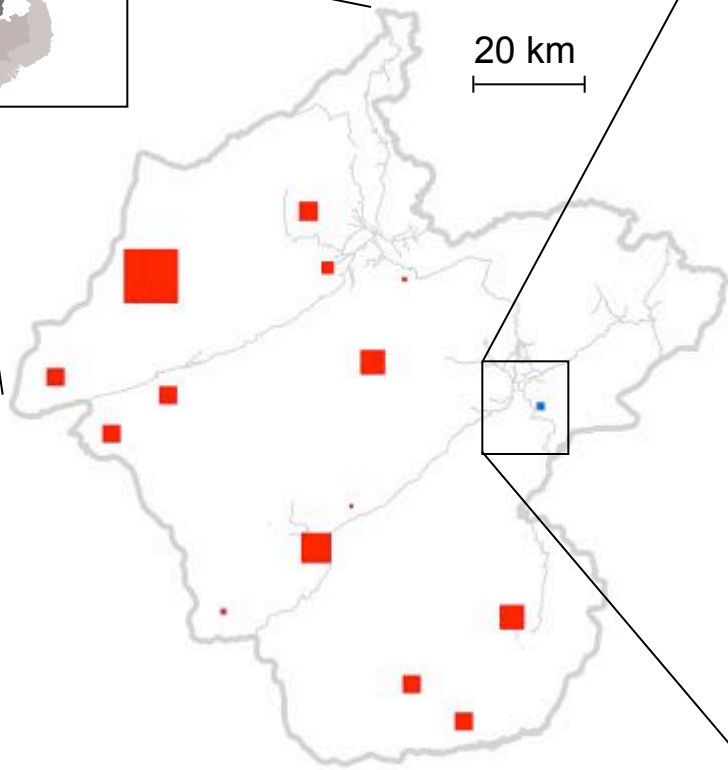
1. Technical assistance vs. political intervention →
Techno-political engagement
2. Two tools for engagement

Investment inventories

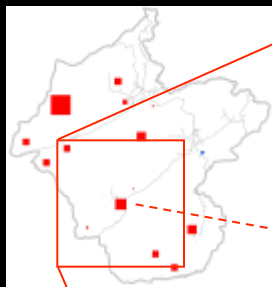


20 km

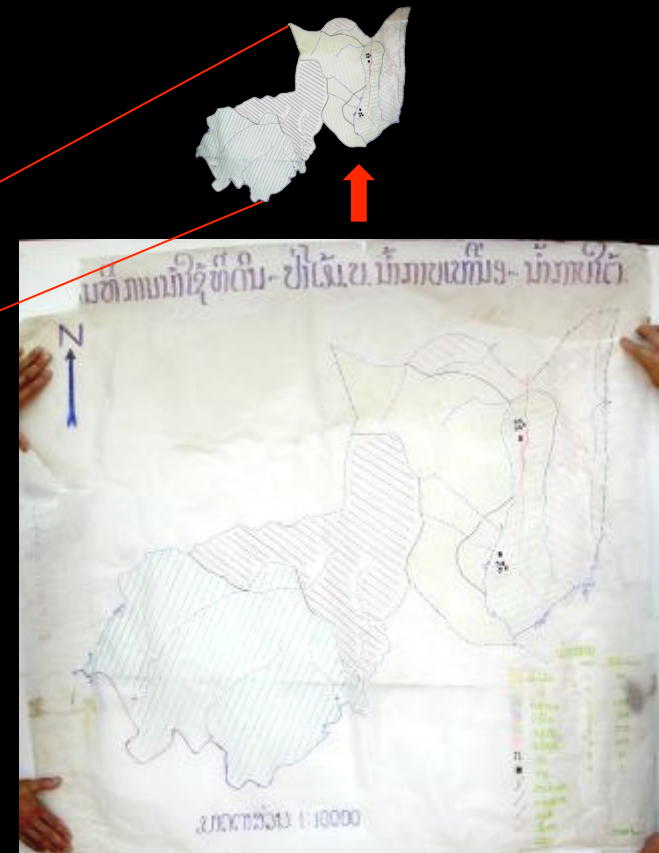
- 35 ha
- 70 ha
- 100 ha
- 214 ha
- 500 ha
- 1,000 ha
- 1,000 ha
- 1,000 ha
- 1,004 ha
- 1,050 ha
- 1,200 ha
- 2,000 ha
- 2,000 ha
- 3,000 ha
- 10,000 ha



Property genealogies



2007



2001



Document room, District Agriculture & Forestry Office

Extra slides

“Without information...”

Index

Vientiane Times
The First National English Language Newspaper
FRIDAY, DECEMBER 8, 2006 ECU\$ 2.00 3000 kbps

INSIDE

Biodiversity essential for food security **PAGE 3**

LISC calendar promises country's national tier: **PAGE 4**

Ontario hits big gold in Laos **PAGE 7**

PM Bouasone to attend 12th ASEAN summit

Land use planning to protect environment

Doctors warn against eating squid

High Speed Internet by 68% in which 99% 43.44kbps

LAO GSM National Network

—VientianeTimes www.vientianetimes.com—is a member of Asia News Network—

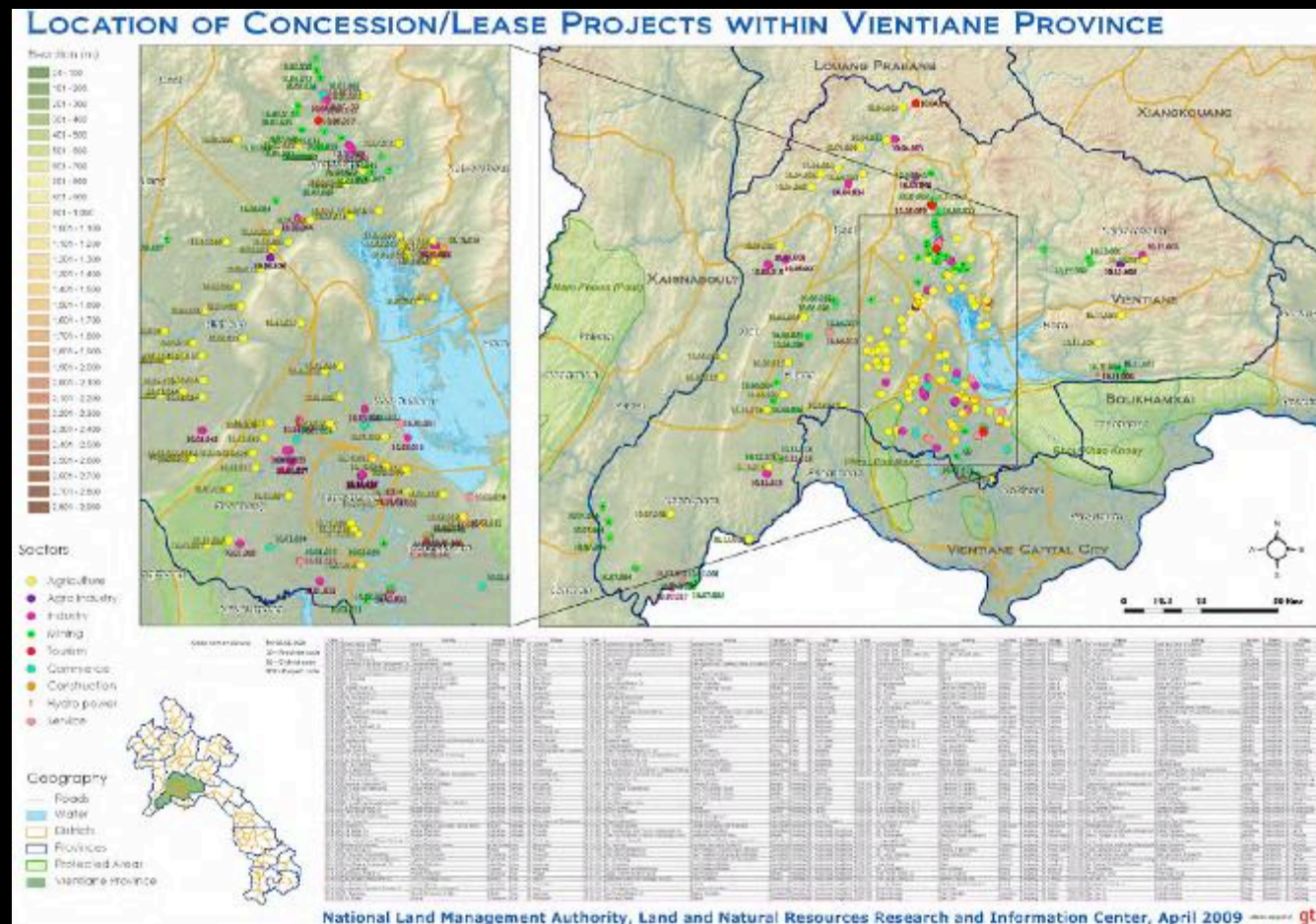
National Land Management Authority (Dec. 2006)

“The *lack of clear information on land use* has caused some setbacks for development projects...”

“Without information, we cannot formulate plans and allocate sites where the forests should be protected, areas for agricultural production such as crops and animal husbandry, and where to set up industrial plants...”

“Without information...”

April 2009: “Maps with proper coordinate-points were obtained from 12 projects only” (of 237 active lease & concession projects in Vientiane Province)



ແຜນທີ່ການນຳໃຊ້ບໍດິນ-ປ່າໄມ້ບ.ປ.ຄາມ



2005



ເຄືອໆໝາຍ.

- ປ່າລະຫງວນ 5.129
- ປ່າປ້ອງກັນ 3.109
- ປ່າຂົນໄຊ້ 108
- ປ່າຊ້າ 28
- ດິນກະລິກກໍ 792
- ບ້ານ 38
- ສ້າຍນ້ຳ-ບ້ວຍ
- ເສັ້ນທາງລັດ
- ເຂດສາມາດເຮັດນາ
- ດິນຍົນແລະວັດເກົ່າ
- ຊາຍແດນ

1:20.000

S 9.304 ha