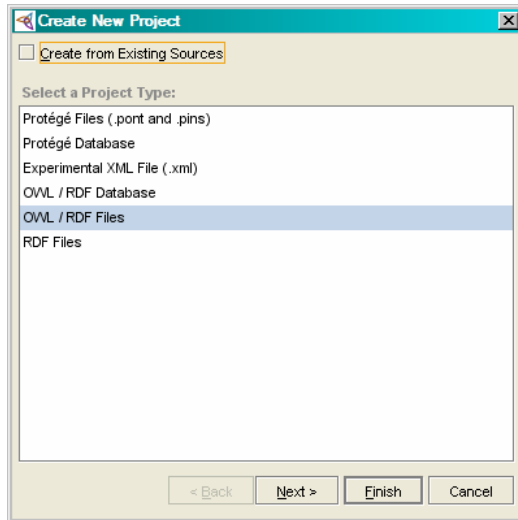
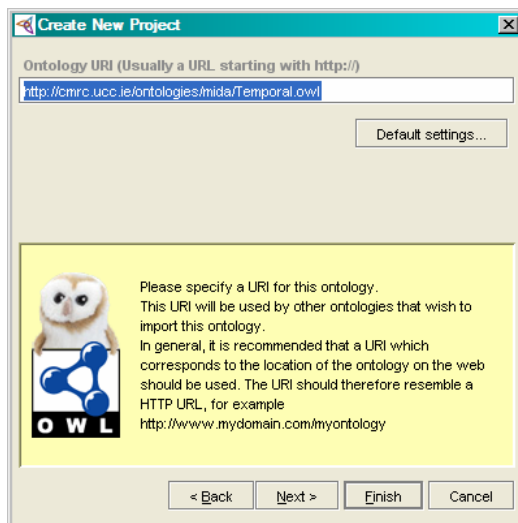


Creating a new project using Protégé:

Choose OWL/RDF Files.

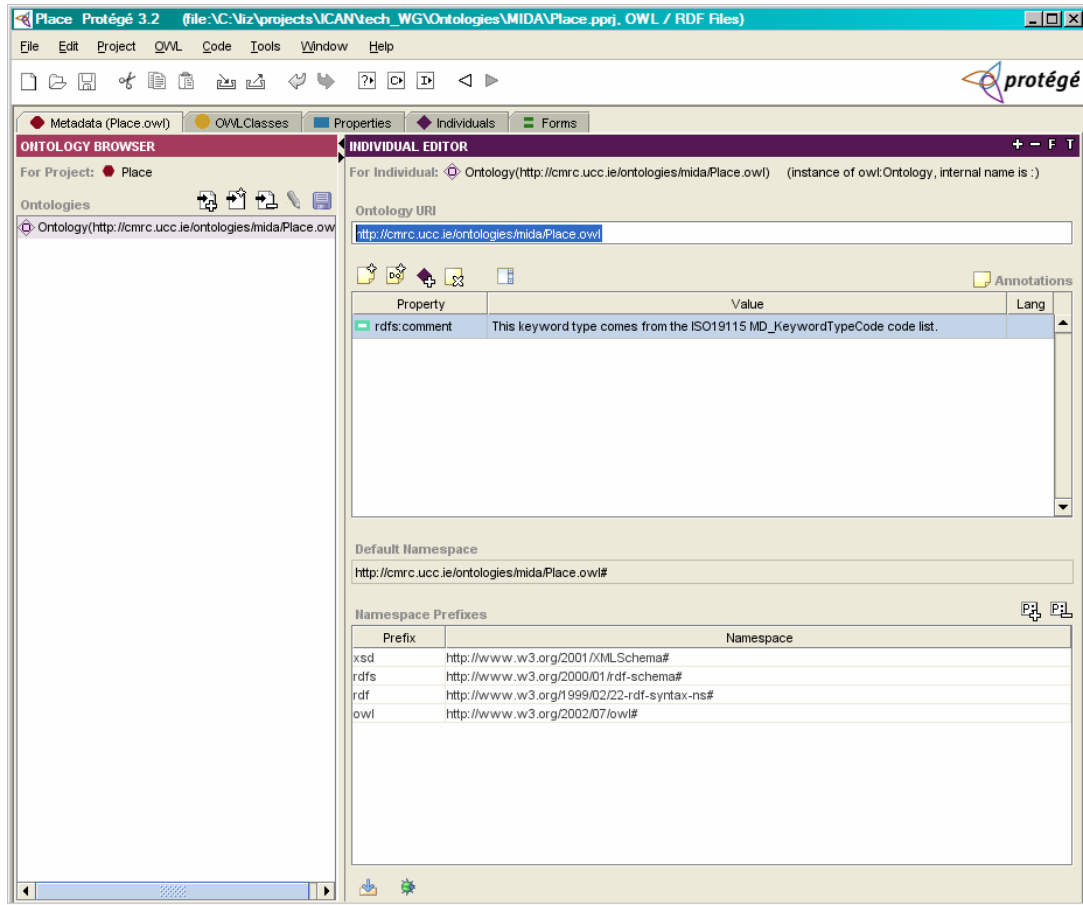


Add the Ontology URI you want for the OWL, which we discussed in the workshop tutorial. (It can use your website URL as the basis, just because it is unique. It does not create a web page.)



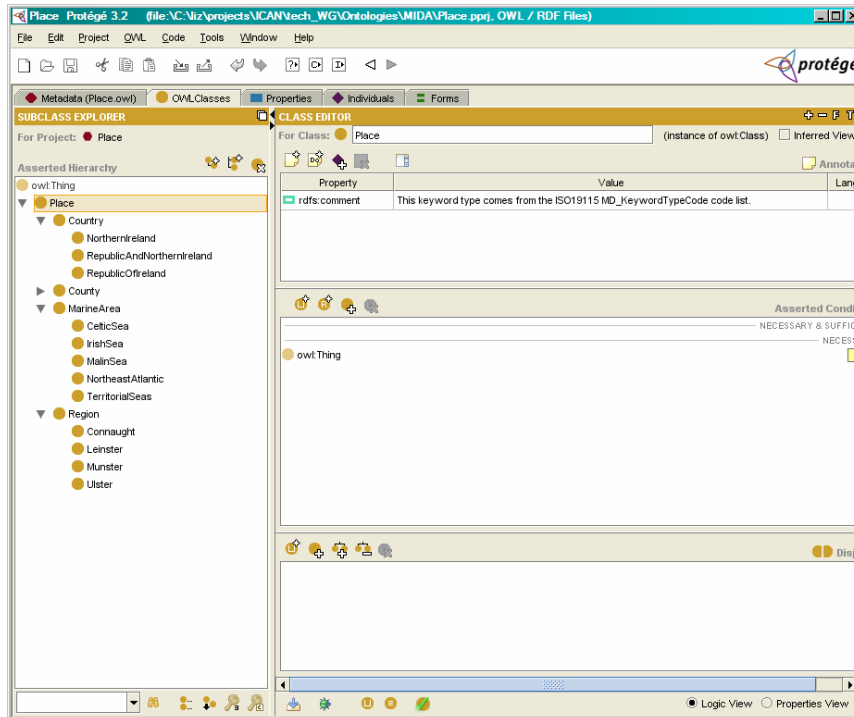
Metadata:

This image shows the metadata tab for the Place list. You can add a definition in the Value field.



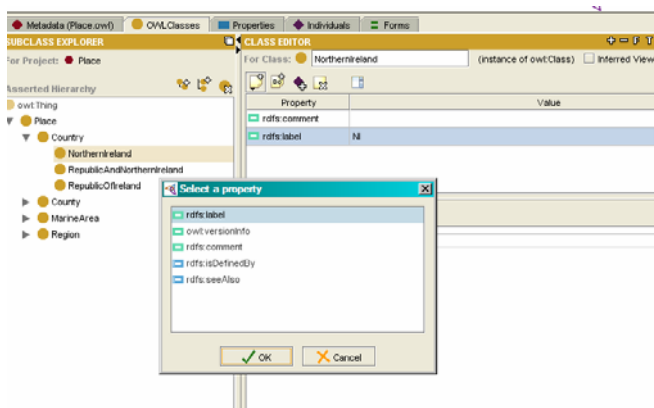
Keywords:

These go under the OWL:Classes Tab (at this point we can ignore then other tabs, other than metadata). This screenshot shows Protégé and our keywords for the Place keyword list. Note the definition of Place: the Value field contains the definition for rdfs:comment (Note that Place is selected on left). For now, this is all we need to do: put this list of keywords together, in a hierarchy if possible. Do not worry yet about designating individuals (items), just add all the keywords as classes and subclasses.



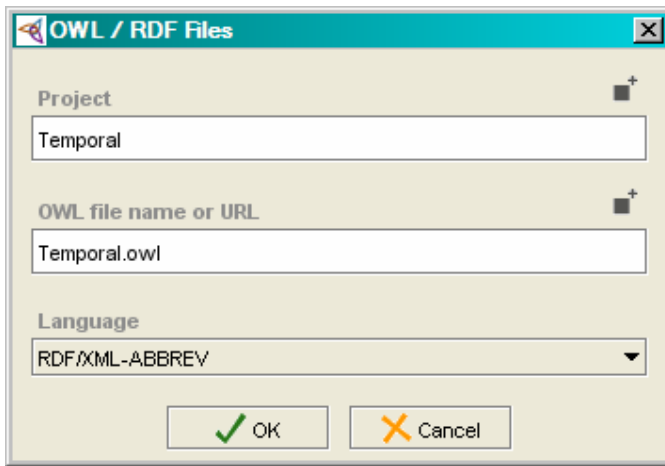
We can make changes later.

To add synonyms, select the “Create New Annotation Value” button over the Property column and select rdfs:label. Then add your synonym in the Value field.



Saving the Files:

You will see this window when you save the first time. Here's a sample of what we put.



Later On:

When we start mapping we will set different conditions in the Asserted Conditions frame, such as keywords that can go in more than one class.