

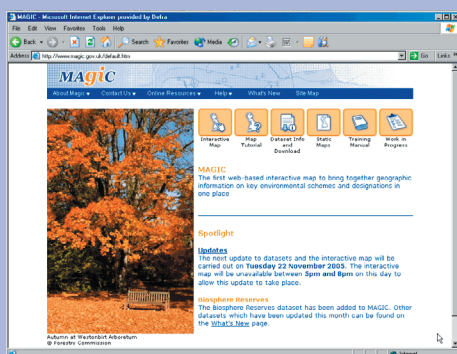
MAGIC

MAGIC is the first web-based interactive map to bring together information on key environmental schemes and designations in one place. MAGIC is a partnership project involving six government organisations who have responsibilities for rural policy-making and services, and although it has been designed to meet the needs of the partner organisations, the facility is available to anyone over the Internet.

The MAGIC partners are:

- Department for Communities and Local Government (DCLG)
- Department for Environment, Food and Rural Affairs (Defra)
- English Heritage
- Environment Agency
- Forestry Commission
- Natural England

MAGIC makes use of standard GIS tools to allow people to view and query the available data.



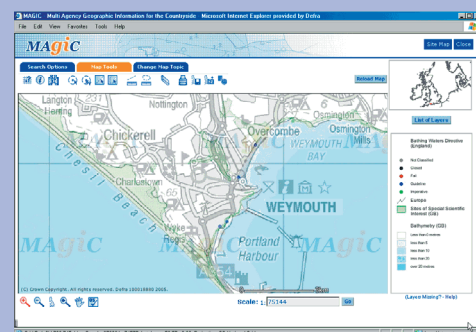
make best use of the wide range of information available on different websites and Internet portals. This varies from simple hotlinks to web

pages containing supporting information to more complex searches between different websites or applications, where data searches can be sent from one website to another. Some links have already been established, but MAGIC continues to explore the possibilities of new links with other organisations and facilities.

The information available in MAGIC has expanded considerably since its launch in July 2002. Originally the interactive map was designed to show only datasets for England. Since the launch, feedback has demonstrated that information for Scotland, Wales and marine areas is also required, so MAGIC has

widened its geographic extent with the purpose of meeting the needs of MAGIC partners with GB-wide interests. The first stage was the addition of datasets for a Coastal and Marine Resource Atlas in December 2005, which provides a flexible resource for national oil spill contingency planning.

If you are interested in becoming more involved in MAGIC, please contact the project manager by emailing support.magic@defra.gsi.gov.uk.



www.magic.gov.uk

