

Annual Conference of Compass Informatics – September 2010

Coastal heritage – audit and pilot GIS

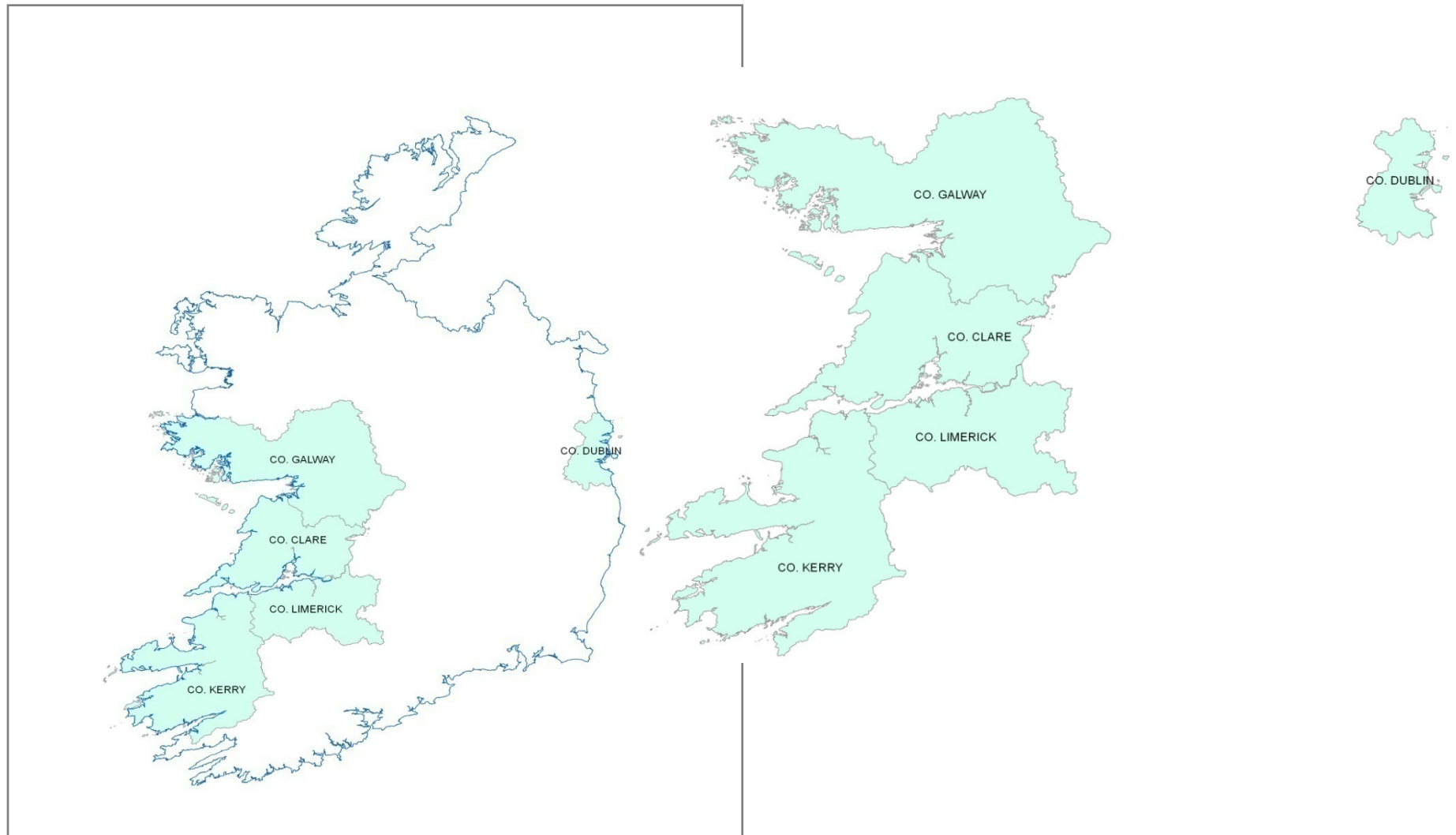
Beatrice Kelly,
Head of Policy and Research
Heritage Council

- GIS approach to allow audit and assessment of coastal heritage
- Phase 1 – inventory and evaluation of data sets to address range of policy issues:
 - Heritage tourism, marine tourism,
 - land-use: development, landscape management,
 - Water – waste water management, flood risk
 - Climate change – Sea level rise, increased erosion and frequency of storms – impacts on biodiversity and cultural sites
 - Adaptation and energy policies – off shore energy generation, land-based wind generation; in appropriate coastal defence

Project Framework

- County heritage plans – Heritage Council and 6 local authorities:
Fingal, Galway Co, Galway city, Clare, Limerick, Kerry
- Advisory group: EPA, OPW – Coastal; Marine Institute; Geological Survey of Ireland, Dept of Environment, Heritage and Local Government – National Monuments – underwater unit, National Parks and Wildlife Service, Failte Ireland, National Museum of Ireland NUI Galway – geography dept
- Product of Phase 1 – reports on strengths and issues, gap analysis, pilot webGIS by mid Nov 2010

Coastal Study Areas



Methodology and issues arising

- Collating existing digital data; directly taken from institutions – live where possible
- multidisciplinary approach
- Field trips – ground truthing, reality on ground,
- lack of common data sets at county level

Difficulties of resolution and scale, and accuracy

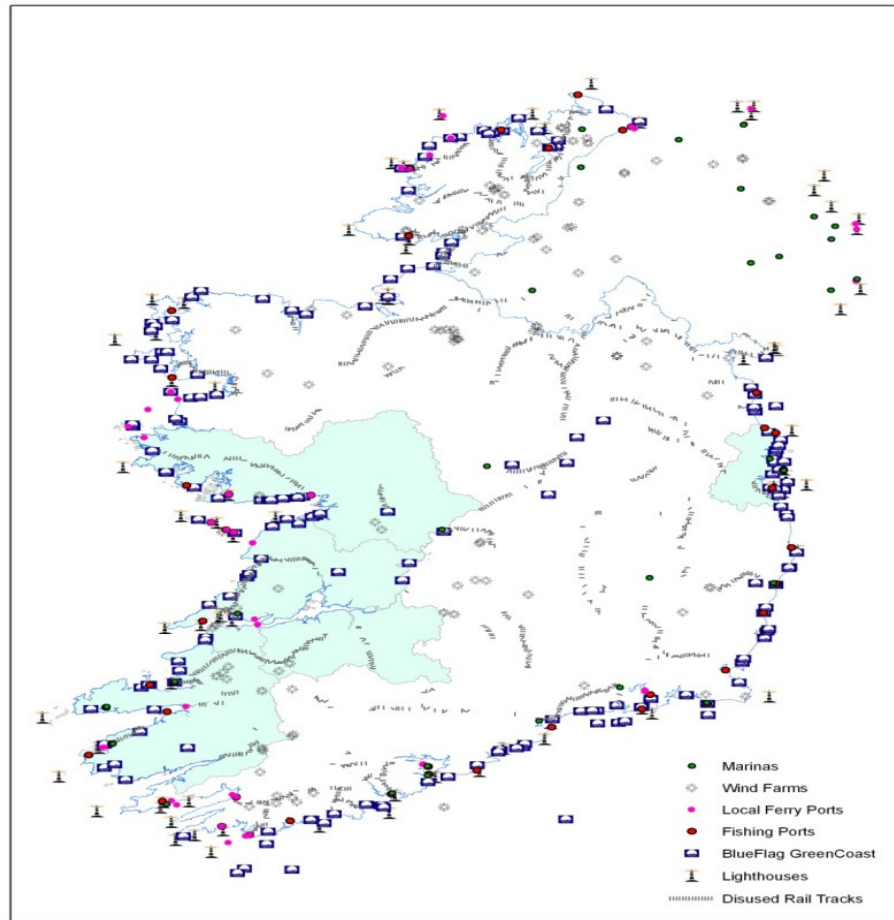
Questions of what we need to collect re coastal heritage – geological heritage, boats and associated maritime heritage, placenames, habitats....

Which heritage sites, features, hot spots are a priority?

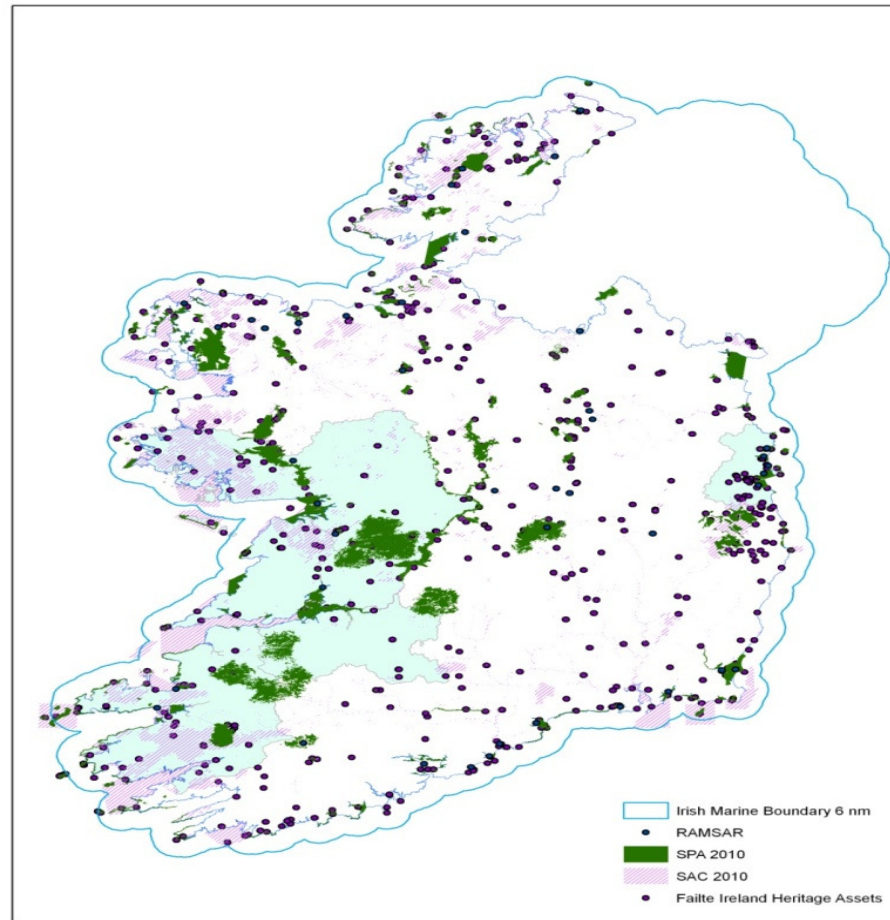
Examples of National, Local and Site Specific Datasets

- Folding Landscapes Maps
- LA Spatial data
- 6" B&W, 6" colour, 2005 orhtos
- 25" B&W
- Graveyards
- Inshore Fisheries, Ground fish surveys
- Bathymetry, INFOMAR
- NRA Excavations
- RMP
- Coastal Geology
- EPA Forestry, Land Cover, Soils, Subsoil,
- Habitat Mapping
- NBDC Species datasets
- Meitheal Mara Trad Boats
- OPW Coastal Imagery
- Civil parishes
- Coastal Facilities
- Museum Finds
- Crafts
- Zostera Survey
- Wind farms
- Barony Boundaries
- Log Ainm Placenames
- Angling Sites
- Spawning areas
- IGH Areas

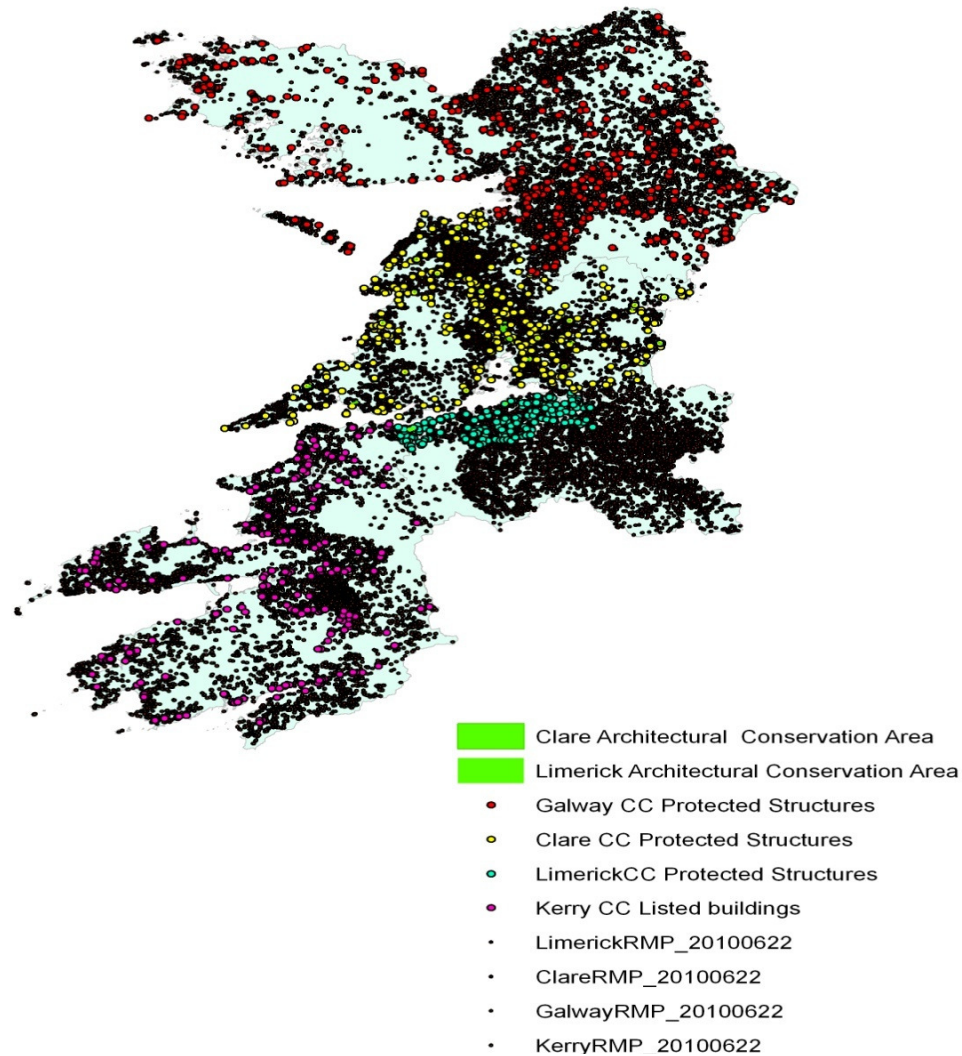
Datasets by Theme – Infrastructure



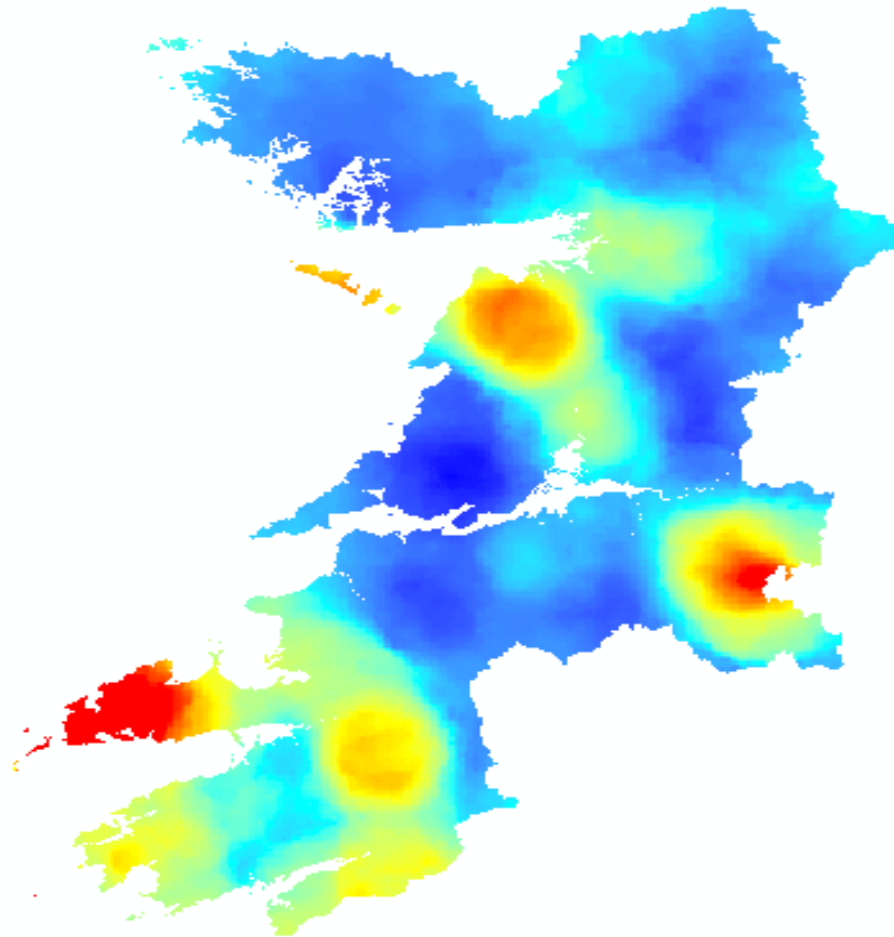
Datasets by Theme – Designations



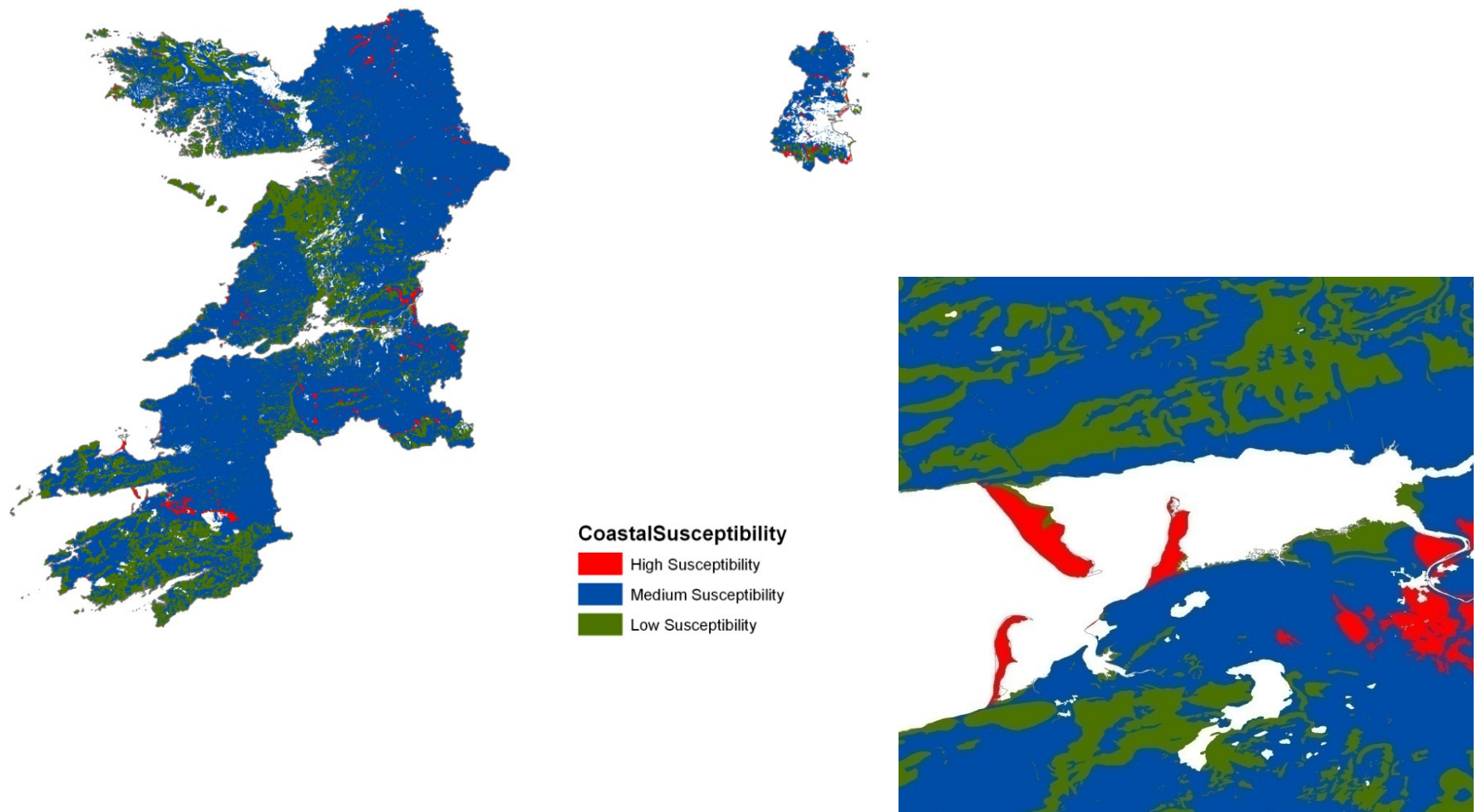
Datasets by Theme – Built & Cultural



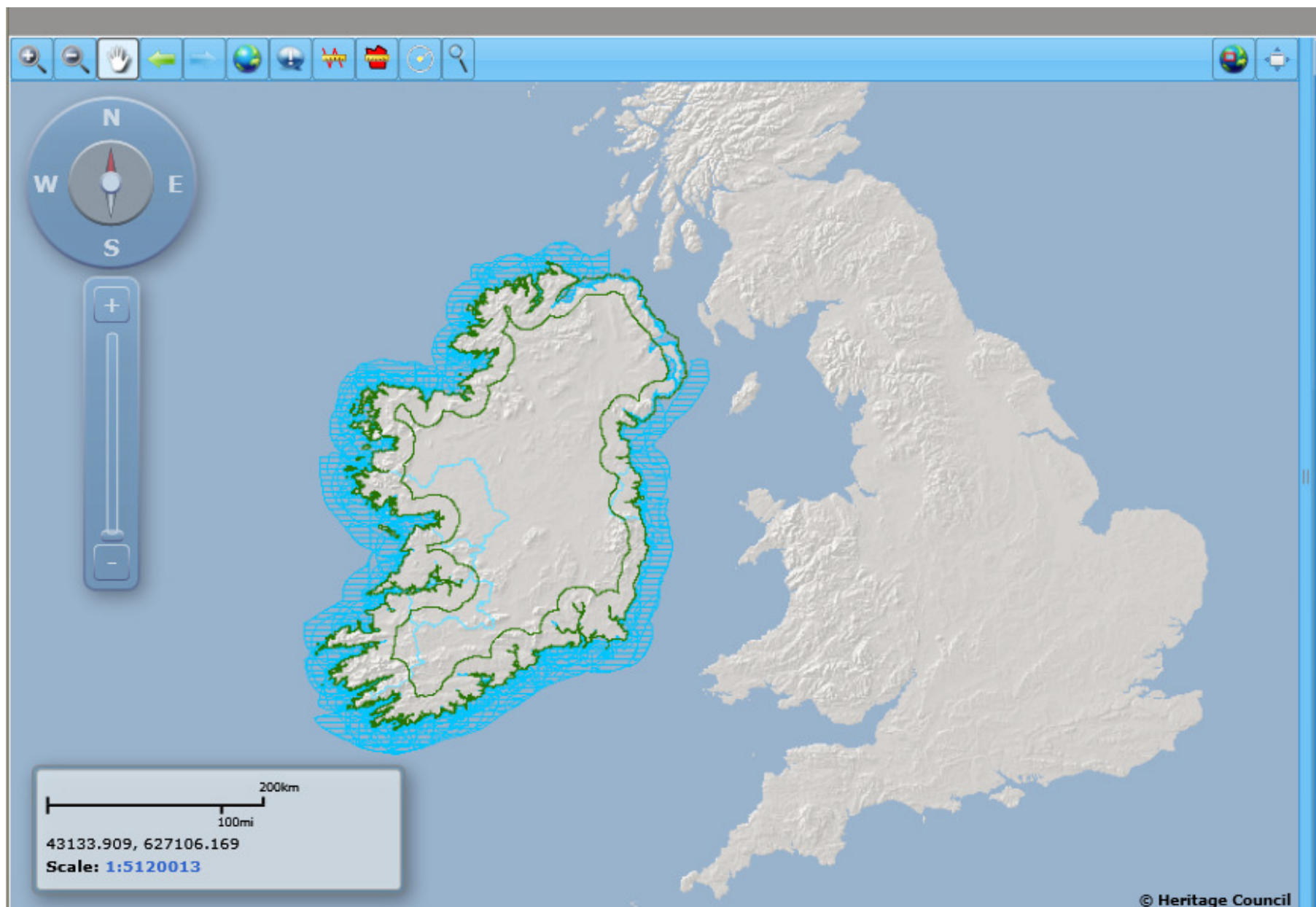
Getis Ord * Hot Spot Analysis – RMP dataset



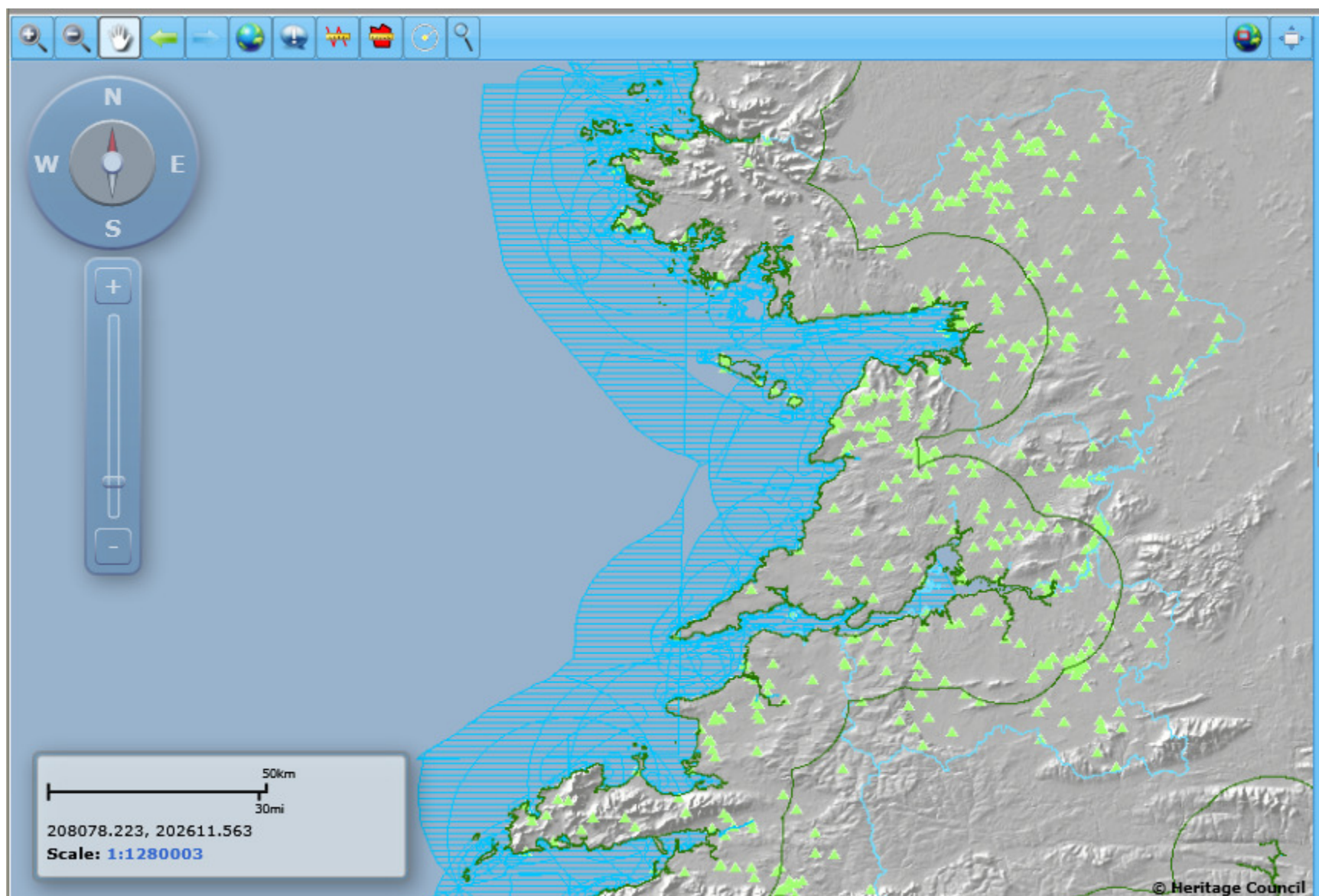
Coastal Susceptibility – Subsoil Classification



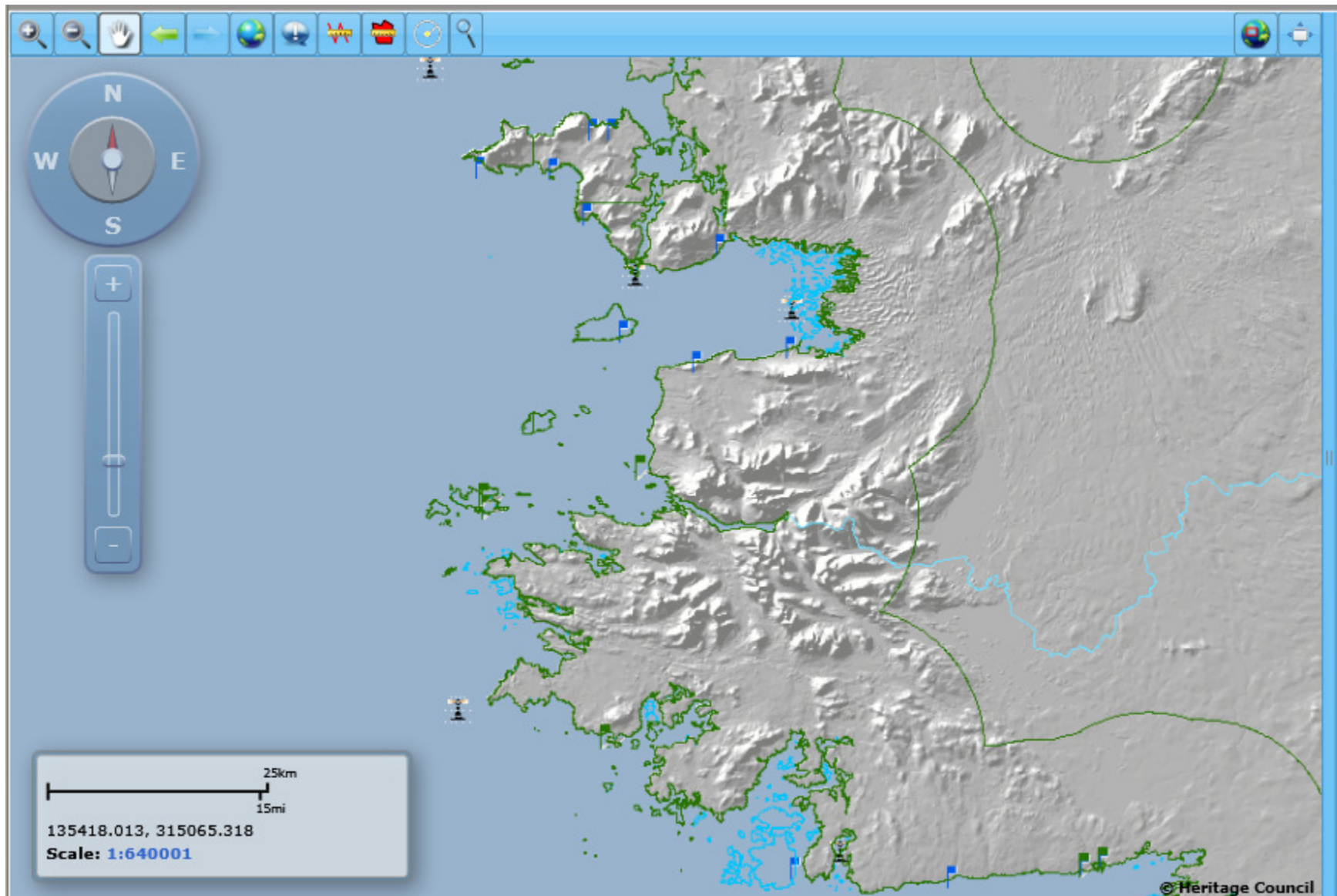
Heritage Council – Coastal Heritage Viewer



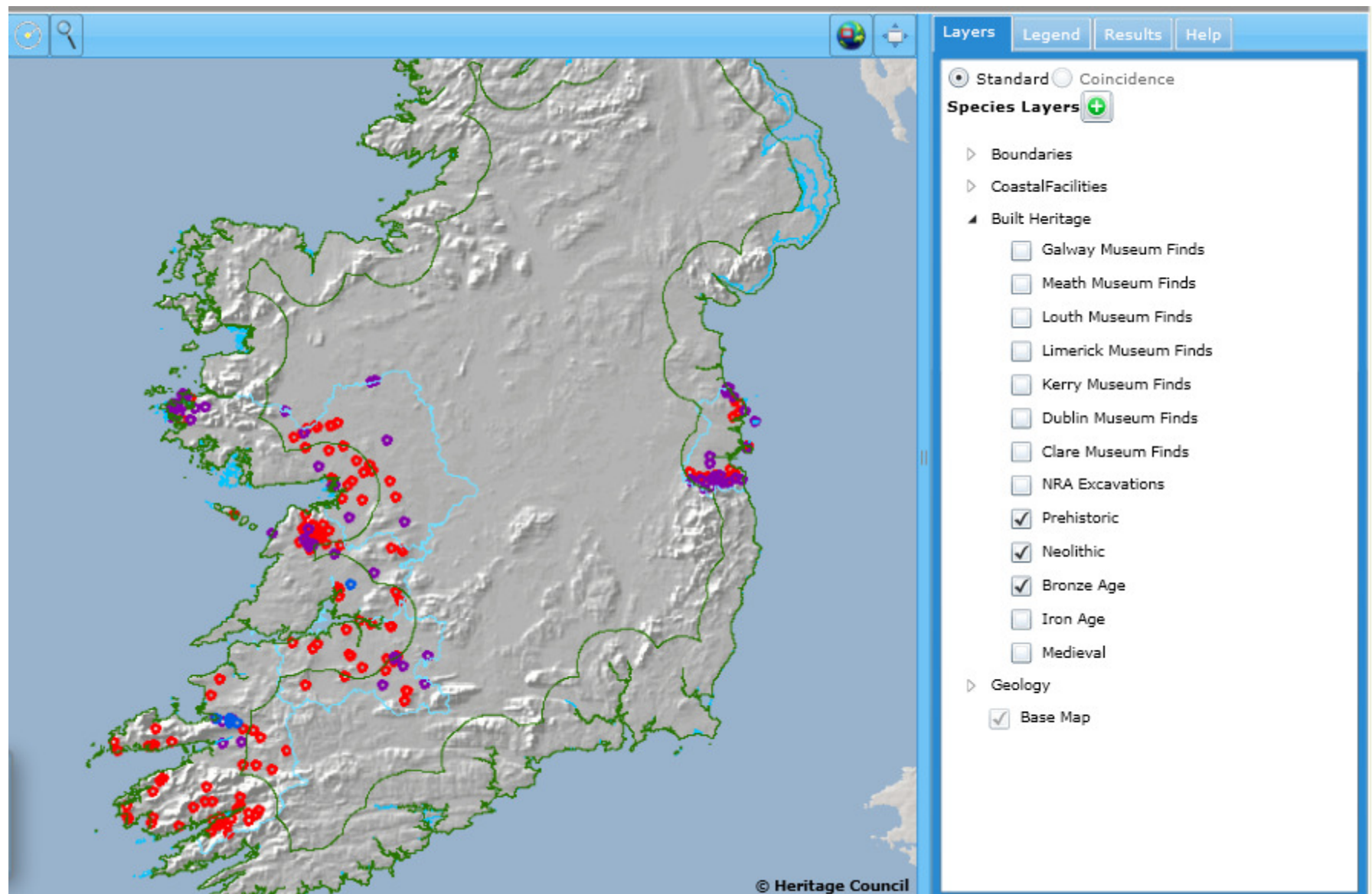
National Museum of Ireland – Museum Finds



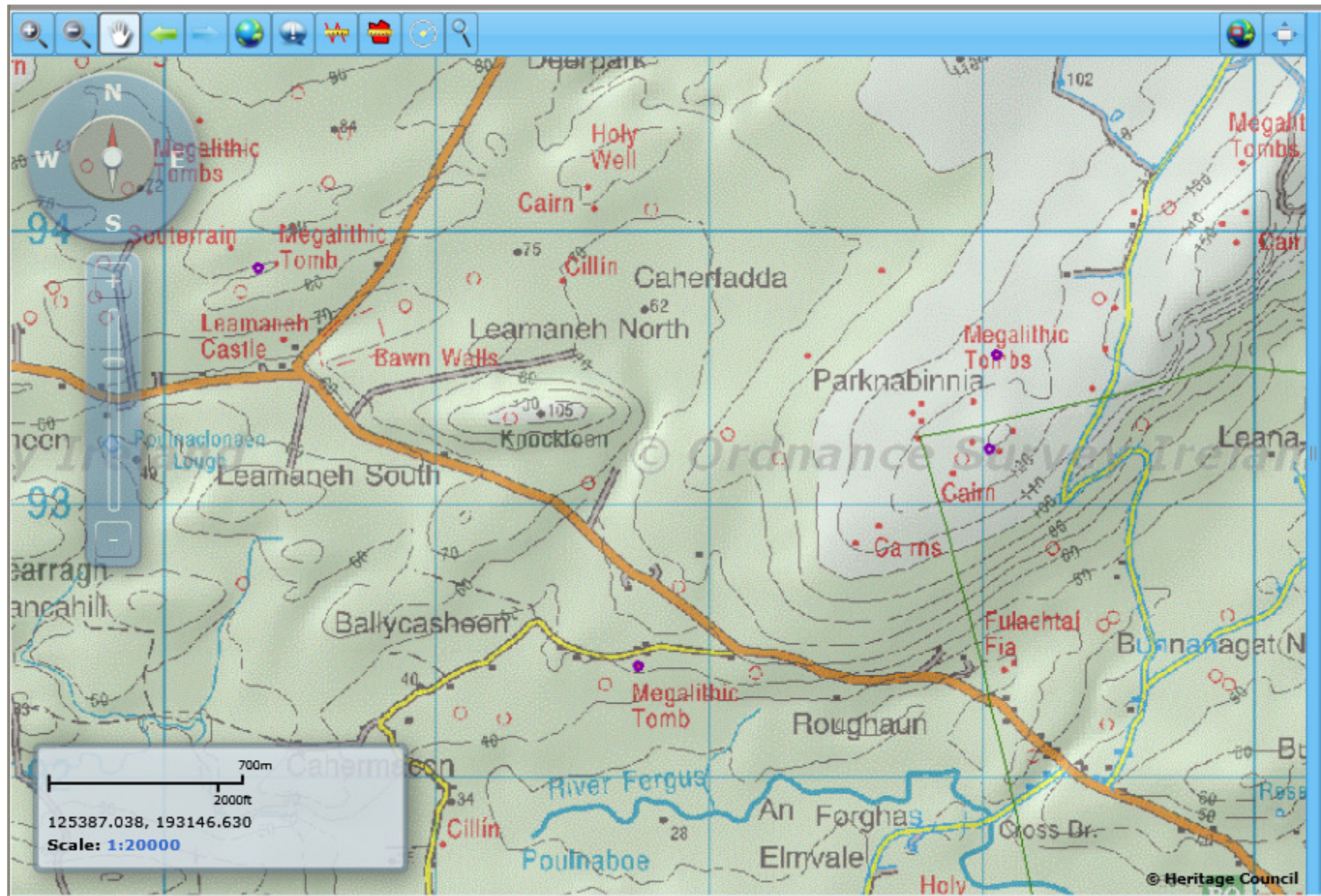
Coastal Facilities – Co. Galway Green/Blue Flag beaches & Lighthouses

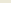
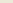
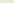
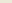
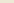




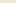
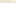
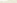


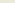

Built Heritage

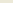
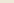
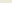
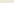


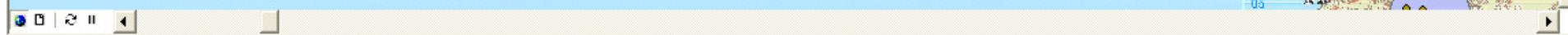
Large Scale Mapping



Target:     

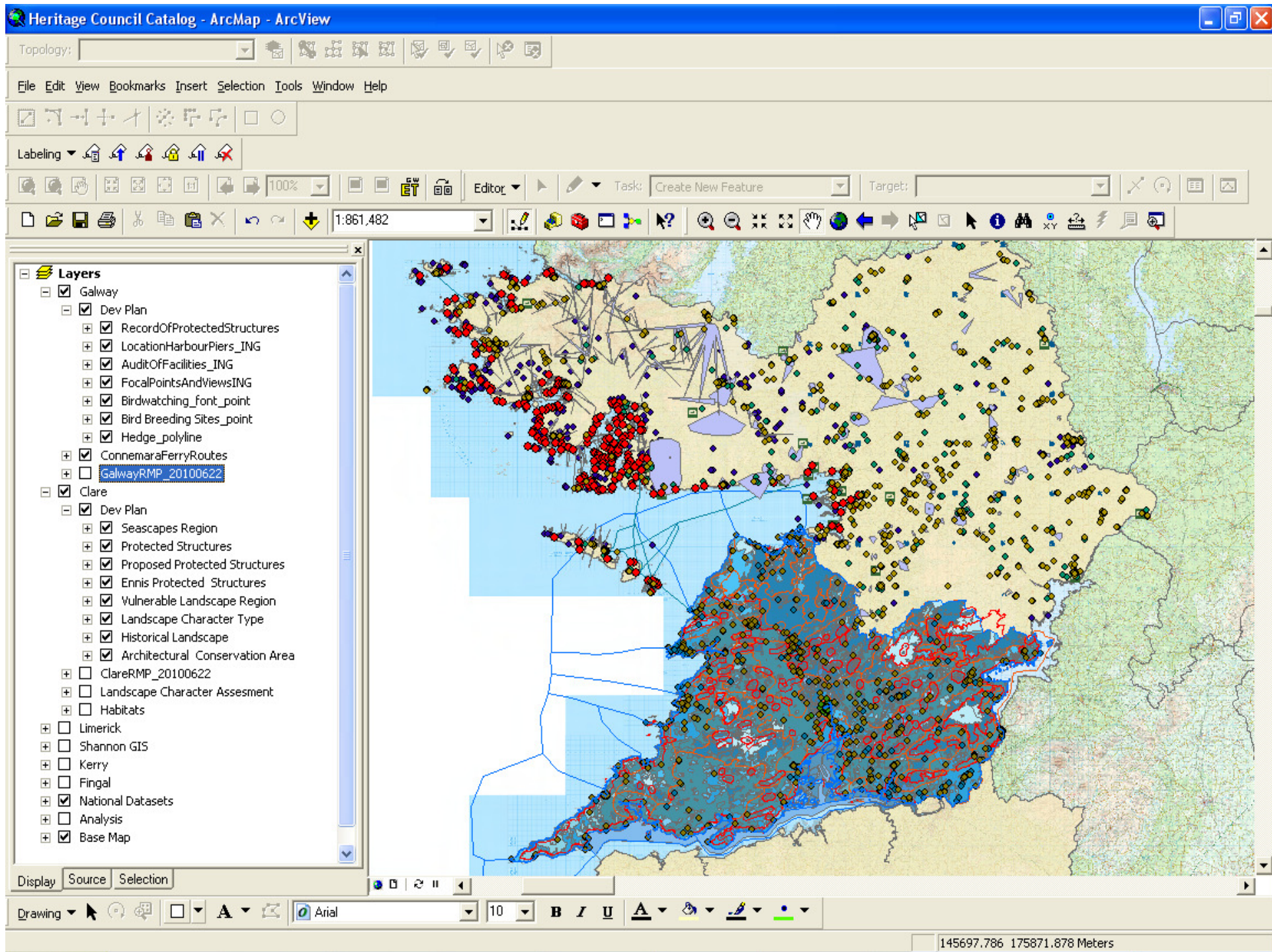









1:66,382

Target:     






84911.158 210963.961 Meters



Long-term management

- To be updated centrally by HC;
- Need for a project data protocol between partners
- Extension to other counties
- Start of larger heritage GIS?
- Node in ISDE?