




When it comes to engaging with communities who are cautious, doubtful, or even disengaged about climate change, what is the magic in maps, and how can we move forward with them toward solutions? Back by popular demand, it was the 2020 Esri UC Science Symposium with the great climate scientist Katharine Hayhoe as keynote speaker! Held virtually because of the COVID-19 pandemic, it attracted an even larger audience (1183 attendees from ~20 countries). Lots of content below so be patient while it all loads. Intro slides at <http://esriurl.com/symposium20>, keynote slides at <http://esriurl.com/symposium20k>.




GIS and Science
@GISandScience






We can't wait to welcome all of you to the Sciences Symposium from Esri [#uc2020](https://ow.ly/qBXR50AxmVp) ow.ly/qBXR50AxmVp Symposium begins at 6:15 a.m. PDT on Thurs. 7/16. Hear from [@DeepseaDawn](#) and Katharine Hayhoe from the Climate Center at Texas Tech.



2020 Esri User Conference: July 13–16 | Join Us Virt...
Join us virtually July 13–16, 2020, for the world's largest GIS conference. Attend virtual technical ...
uc2020.esri.com


2:40 PM · Jul 15, 2020 

 19  See GIS and Science's other Tweets



Esri Science Symposium
July 16, 2020 | 6:15 a.m. - 7:45 a.m. | Virtual

Esri Science Symposium is coming

 LinkedIn

When it comes to engaging with communities who are cautious, doubtful, or even disengaged about [#climatechange](#), what is the magic in maps, and how can ...



Dr. Dawn Wright
@deepseadawn



To experience the [#GISforScience](#) flip book that Jack just mentioned in the [#EsriUC](#) plenary, go to bit.ly/2ZZnyKg . Preview edition of entire book (all 4 sections) will be available at [#ScienceSymposium](#) on Thursday.



7:02 PM · Jul 13, 2020



44



17 people are Tweeting about this



ESRI CHILE
@ESRIChile



¡No te pierdas el Simposio de Ciencias de Esri! Mañana 16 de julio / 09:15 hrs. (Chile), explora el cambio climático y descubre el importante rol de la tecnología geoespacial. Acceso: registros Full Access Esri User Conference ow.ly/4pEN50AljUp #ScienceSymposium #EsriUC



9:38 PM · Jul 15, 2020



2



See ESRI CHILE's other Tweets



Renee
@auntyrenee



@deepseadawn I Should got to sleep already.
#EsriUC2020 #scienceSymposium at 3:15am 🙌👉🌸
Virtual Mac nuts This year. 🌈

2:56 AM · Jul 16, 2020



1



See Renee's other Tweets



Jami Dennis 🦎🍌🛩️🌱
@TheGISDiva



Wasn't too sure about this whole virtual conference thing, but turns out that I have really gotten a lot of inspiration from the virtual #EsriUC ! Tomorrow starts off with the #ScienceSymposium with @deepseadawn and caps off with @womeningis SIG!

5:37 AM · Jul 16, 2020



2



See Jami Dennis 🦎🍌🛩️🌱's other Tweets



Diane Fritz 🎨🌱
@fritzGIS



My happy place #esriuc2020 #sciencesymposium
gisforscience.com

1:27 PM · Jul 16, 2020



2



See Diane Fritz 🎨🌱's other Tweets



Bruce Boucek @bruceboucek · Jul 16, 2020



ESRI Science Symposium started just a few minutes ago. #EsriUC



GIS and Science @GISandScience

We can't wait to welcome all of you to the Sciences Symposium from Esri #uc2020 ow.ly/qBXR50AxmVp Symposium begins at 6:15 a.m. PDT on Thurs. 7/16. Hear from @DeepseaDawn and Katharine Hayhoe from the Climate Center at Texas Tech.



Bruce Boucek
@bruceboucek

#ScienceSymposium

1:28 PM · Jul 16, 2020



See Bruce Boucek's other Tweets



JamiRae 🌱✈️
@JamiRae



here we go! #ScienceSymposium #esriUC Just realized I haven't missed one of these since @deepseadawn started them.

1:29 PM · Jul 16, 2020



3



See JamiRae 🌱✈️'s other Tweets



James Boxall @JamesGIS · Jul 16, 2020



Wonderful (ok, amazing) resource "Open Science" via @GISandScience @esri Thanks @deepseadawn



Science at Esri | Connecting GIS to Scientific Research
Find out how Esri supports and actively participates in the scientific community, using GIS to contribute to research and ...
esri.com



James Boxall

@JamesGIS

Also free online resources gisforscience.com #esriUC
#ScienceSymposium

1:29 PM · Jul 16, 2020



2



See James Boxall's other Tweets



Banannalisa ⁷

@AS_Twitty



Good morning! ☀️

Coffee and science with @deepseadawn ! 👍

#ScienceSymposium #EsriUC #EsriUC2020

1:30 PM · Jul 16, 2020



3



See Banannalisa's other Tweets



WomenInGISAZ 🌍🗺️🚀
@WomenInGisaz



Who's up watching the [#ScienceSymposium](#) with [@deepseadawn](#) ? You don't want to miss this!

1:30 PM · Jul 16, 2020



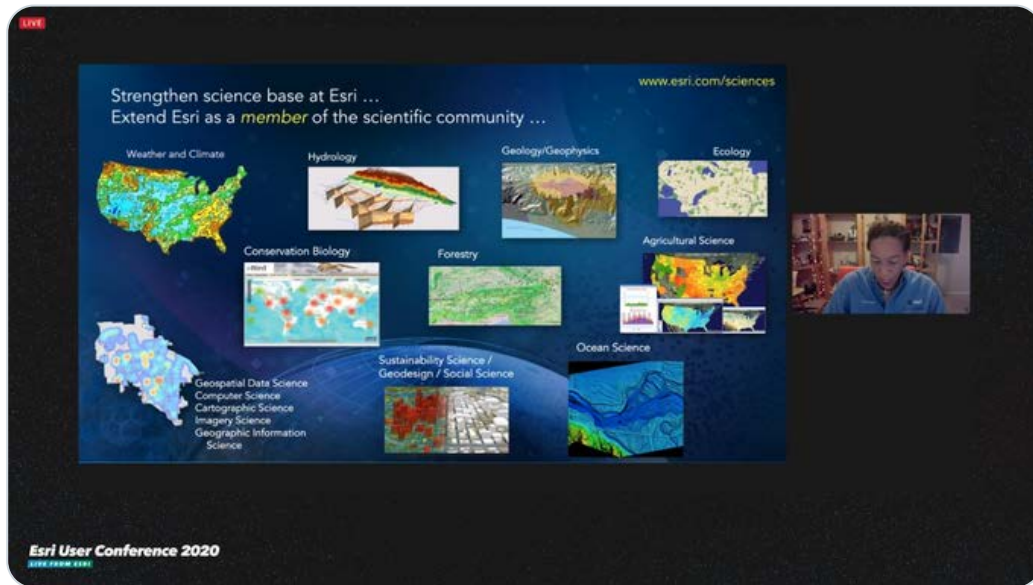
👍 5 👤 See WomenInGISAZ 🌍🗺️🚀's other Tweets



Justin Cole, GISP
@JustinColeGIS



Enjoying the [#esriuc](#) [#sciencesymposium](#) this year.



1:30 PM · Jul 16, 2020



👍 8 👤 See Justin Cole, GISP's other Tweets



Jami Dennis 🌍🗺️🚀🌱
@TheGISDiva



Starting my morning with [@deepseadawn](#) at the [#EsriUC](#) [#ScienceSymposium](#).

1:31 PM · Jul 16, 2020



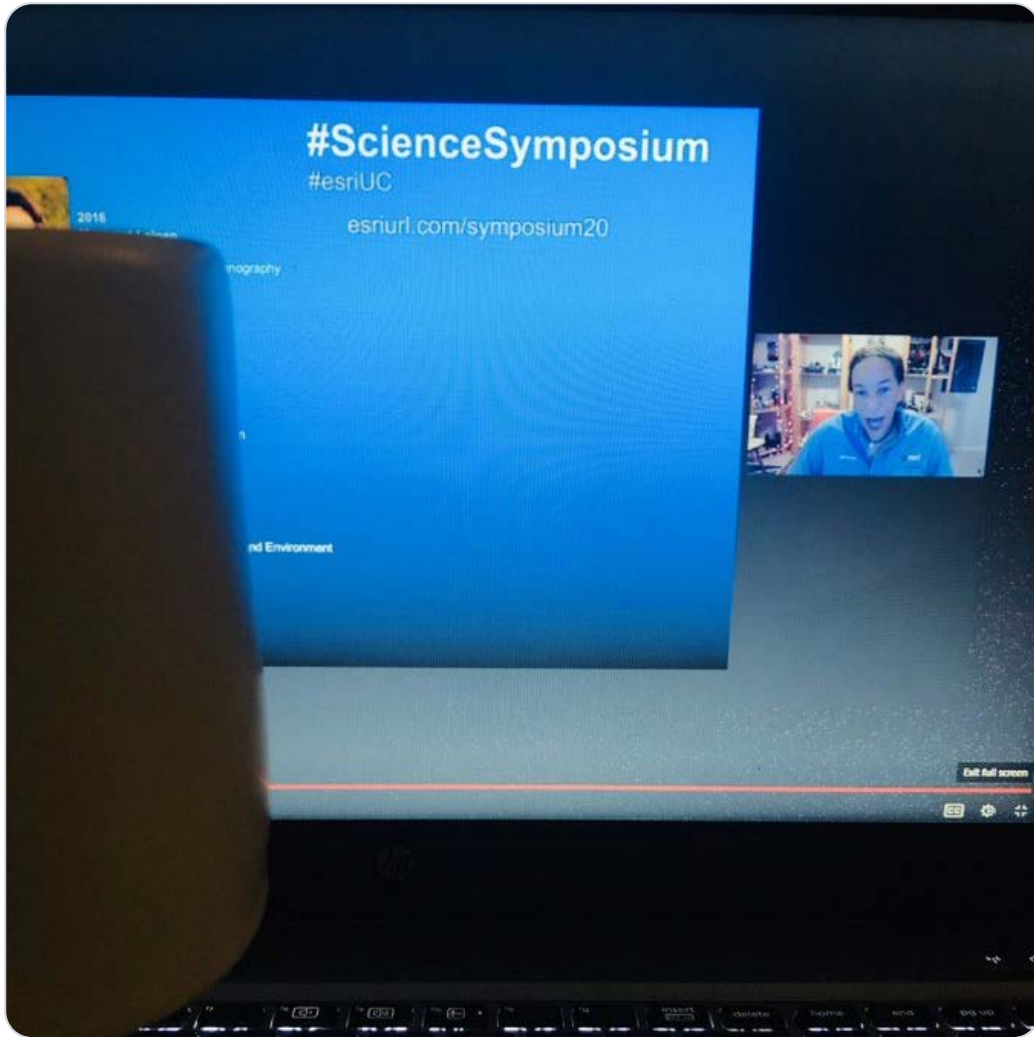
👍 3 👤 See Jami Dennis 🌍🗺️🚀🌱's other Tweets



Altamira Consulting, LLC
@AltamiraAdvTech



Kicking off the last day of [#EsriUC](#) with a cup of coffee...and [@deepseadawn](#) for the [#ScienceSymposium](#).
👍💪



1:31 PM · Jul 16, 2020



1



See Altamira Consulting, LLC's other Tweets



Jennifer Radcliff
@JRadmappgirl



Up really early this morning, but happy to be watching [@deepseadawn](#) at the virtual [#ScienceSymposium](#) at this year's [#EsriUC](#)

1:31 PM · Jul 16, 2020



5



See Jennifer Radcliff's other Tweets



Kevin Zerbe
@KWZerbe



My first ever @KHayhoe talk is at the virtual #sciencesymposium for the #EsriUC2020, but I'll take it! This is awesome!

1:32 PM · Jul 16, 2020



5 See Kevin Zerbe's other Tweets



Jami Dennis 🦎🍌🚫🌵
@TheGISDiva



So excited to hear @KHayhoe this morning! #EsriUC #ScienceSymposium @deepseadawn

1:32 PM · Jul 16, 2020



2 See Jami Dennis 🦎🍌🚫🌵's other Tweets



Kaitlyn Kong
@kaitlyn_kong



"Climate change is the most political science there is" - Dr. Hayhoe #sciencesymposium #EsriUC2020 I love chatting about climate change

1:32 PM · Jul 16, 2020



1 See Kaitlyn Kong's other Tweets



Christopher Tracey
@_chris_tracey_



I'm supposed to be off today, but putting some time in to watch the #sciencesymposium at the #EsriUC2020. It's definitely one of the highlights of the conference

1:37 PM · Jul 16, 2020



2 See Christopher Tracey's other Tweets



Jami Dennis 🦎🍌🚫🌵
@TheGISDiva



"The true solution is policy change." (for climate change) @KHayhoe #EsriUC #ScienceSymposium @deepseadawn

1:37 PM · Jul 16, 2020



3 See Jami Dennis 🦎🍌🚫🌵's other Tweets



Banannalisa 7
@AS_Twitty



Critically insufficient?! 🇺🇸 🤔

#sciencesymposium #esriuc #ClimateChange

1:38 PM · Jul 16, 2020



See Banannalisa's other Tweets

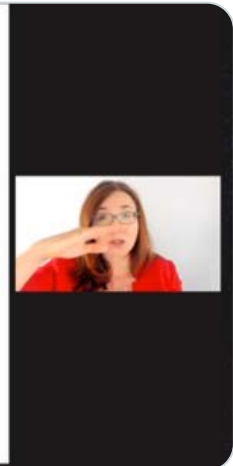
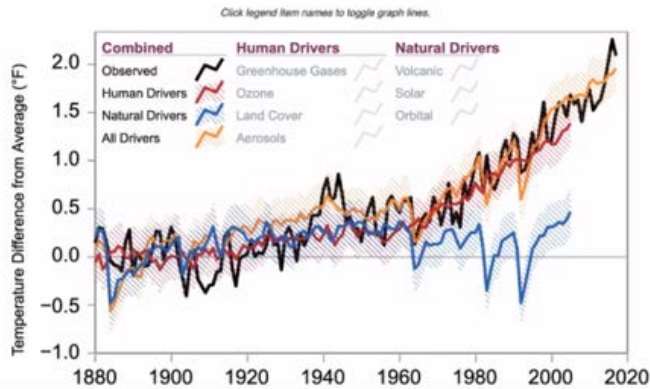


Jami Dennis 🦎 🍌 🌳 🌱
@TheGISDiva



"We have the science!" @KHayhoe #EsriUC
#ScienceSymposium @deepseadawn

Figure 2.1: Human and Natural Influences on Global Temperature



1:40 PM · Jul 16, 2020



6



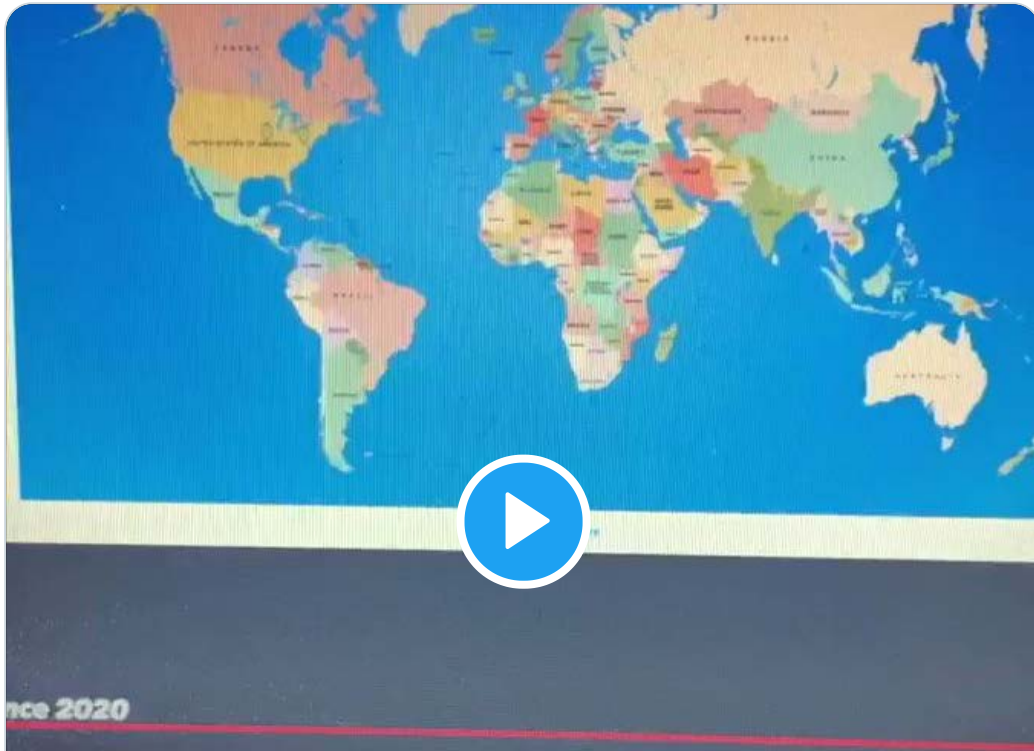
See Jami Dennis 🦎 🍌 🌳 🌱's other Tweets



Altamira Consulting, LLC
@AltamiraAdvTech



So cool! Watch people check-in live from where they're attending the [#ScienceSymposium](#). What power. 🦹🏻🙌
[#EsriUC](#)





Bruce Boucek
@bruceboucek



Hot Numbers #EsriUC #ScienceSymposium @KHayhoe - thanks!



Hot Numbers

It's a fact: Human impacts are warming our climate and changing our planet.

storymaps.esri.com

1:44 PM · Jul 16, 2020



5



See Bruce Boucek's other Tweets



Kaitlyn Kong @kaitlyn_kong Jul 16, 2020



"Climate change is the most political science there is" - Dr. Hayhoe

[#sciencesymposium](#) [#EsriUC2020](#)

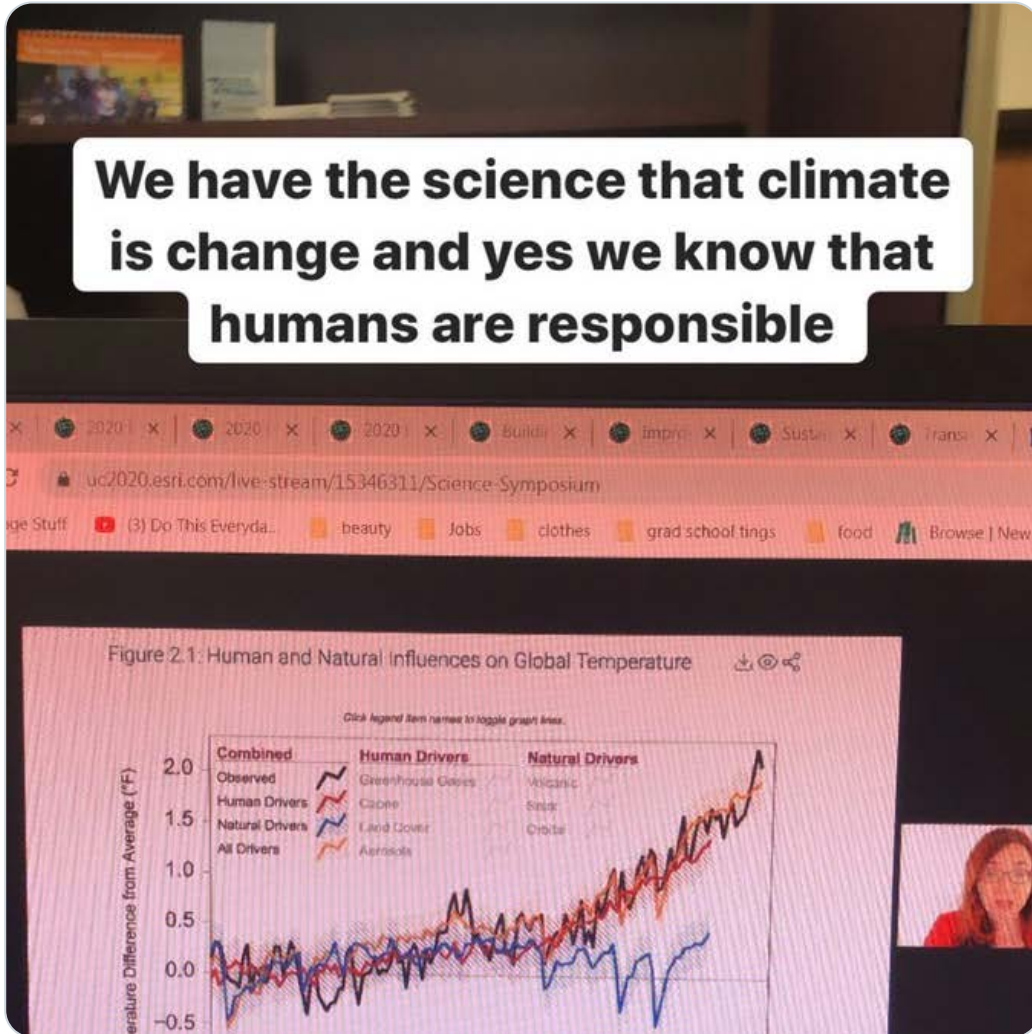
I love chatting about climate change



Kaitlyn Kong

@kaitlyn_kong

We do have the facts!!! So why won't people like my dad listen and accept that we are in the anthropocene?? Literally, 11,000 scientists warning us about this and somehow science is debatable in America!? [#esriUC2020](#) [#sciencesymposium](#)



2



See Kaitlyn Kong's other Tweets



Sadie Neuman
@SciCommSadie



So thrilled to be watching @KHayhoe present at the @EsriUC #sciencesymposium this year! I can't take screen shots fast enough to save all the incredible information she is sharing!

1:46 PM · Jul 16, 2020



3



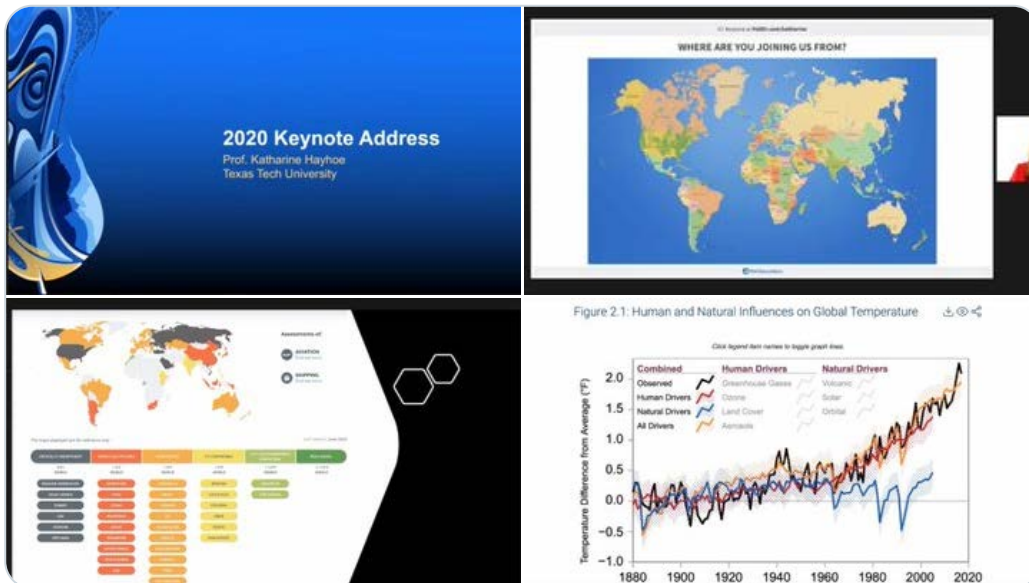
See Sadie Neuman's other Tweets



Shannon White
@shannonhwhite



Katharine Hayhoe @kayhoe of @TexasTech During #esriuc #sciencesymposium talking about Global Climate change, kicks off with a map in a poll then into the data behind the science of global climate change. 2.6M articles in Google Scholar and more



1:46 PM · Jul 16, 2020



3



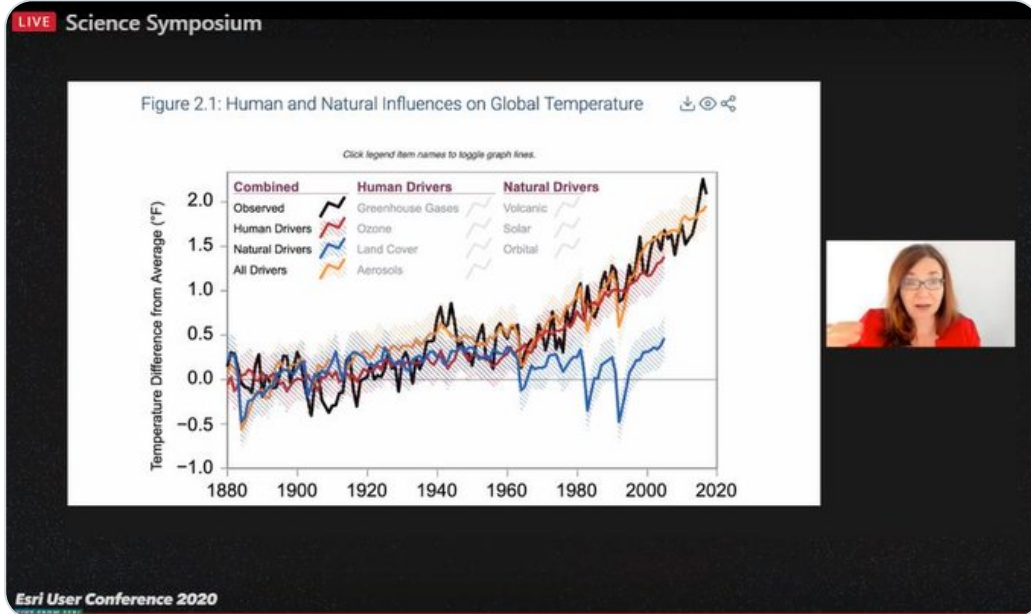
See Shannon White's other Tweets



Ali Pressel
@ali_pressel



Fantastic [#ScienceSymposium](#) with [@GISandScience](#) [@deepseadawn](#) [@KHayhoe](#)! Excellent data analysis and resources to share with the community and the next generation of young scientists! [#esriUC](#) [#motivateinnovateelevate](#)



1:46 PM · Jul 16, 2020



4



See Ali Pressel's other Tweets



Jennifer Radcliff
@JRadmapgirl



[@KHayhoe](#) is amazing! So glad I got up early for this!
[#ScienceSymposium](#) [#EsriUC](#)

1:49 PM · Jul 16, 2020



5



See Jennifer Radcliff's other Tweets



Shannon White
@shannonhwhite



@KHayhoe suggests looking at skepticalscience.com to see the questions people have about #climatescience. Discusses during #esriuc #sciencesymposium many of the facts around those things folks doubt.

CO₂ concentration is nearly at 420 more than 15 million years ago, when it was 180 ppm and sea level were significantly higher.

Continued growth in CO₂ emissions would lead to an atmospheric concentration of 600 ppm in 2100, a level not seen for millions of years.

The present-day emissions rate of 40 GtC/yr is such that there is no climate analogue for the last 100 million years.

Aristotle might argue humans were not responsible for the choices made at the beginning of the Industrial Era, when collective scientific and societal knowledge limited our capacity to choose wisely and well.

Hayhoe and Kopp (2016)

Regardless of our original ignorance, however, over the last few centuries we have been conducting an unprecedented experiment with the Earth's climate system, the only home we have.

1:52 PM · Jul 16, 2020



1



See Shannon White's other Tweets



Jami Dennis 🌱🍌🚫🌿
@TheGISDiva



Climate Change and Environmental Protection are the two most polarizing topics in the U.S. (Rep v Dem difference).

@KHayhoe #EsriUC #ScienceSymposium @deepseadawn

AND YET HERE WE ARE

Percentage of Americans in each party who say the issue is a top priority in 2020

Issue	Rep/Lean Rep	Dem/Lean Dem
Climate change	~15%	~75%
Environmental protection	~15%	~75%
Trade	~75%	~15%
Immigration	~75%	~15%
Health care costs	~75%	~15%
Education	~75%	~15%
Foreign aid	~75%	~15%
Supreme Court	~75%	~15%
Trade	~75%	~15%
Foreign aid	~75%	~15%
Supreme Court	~75%	~15%
Trade	~75%	~15%
Foreign aid	~75%	~15%
Supreme Court	~75%	~15%

Source: Pew Research Center

1:53 PM · Jul 16, 2020



1



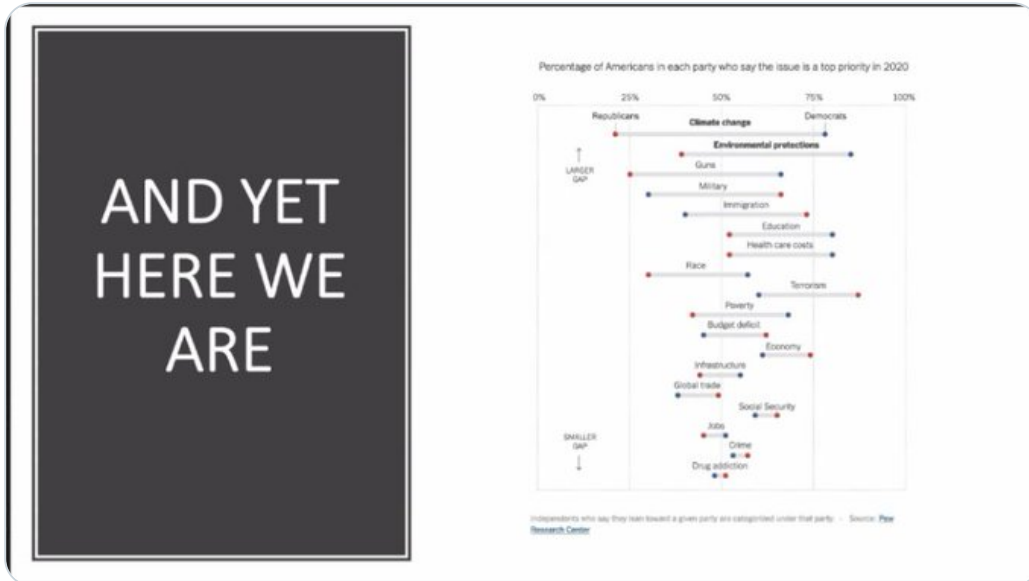
See Jami Dennis 🌱🍌🚫🌿's other Tweets



Shannon White
@shannonhwhite



Great image shared by @KHayhoe of US political polarization of issues. At the top - climate change and environmental protections. #esriuc #sciencesymposium



1:55 PM · Jul 16, 2020



4



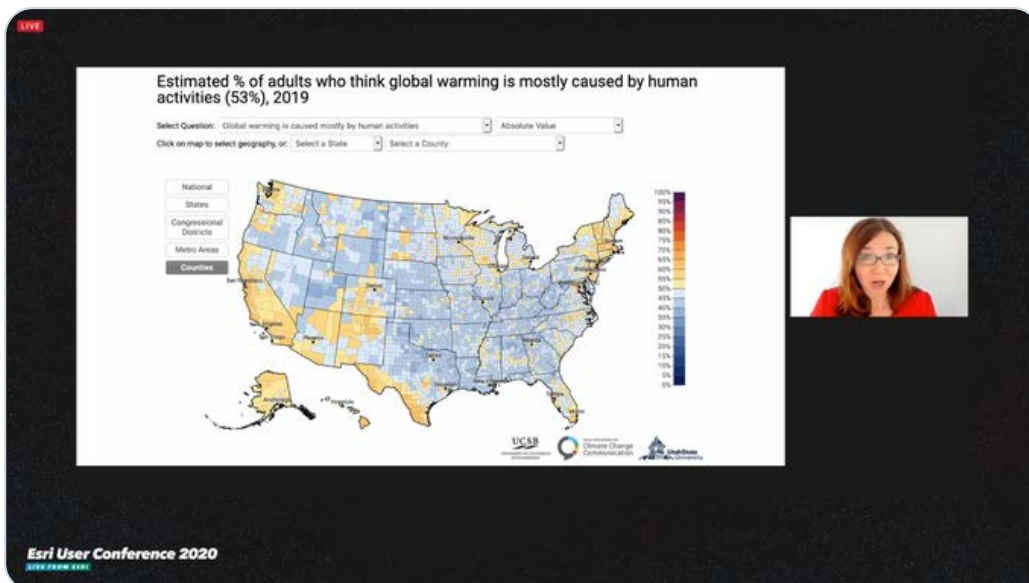
See Shannon White's other Tweets



Justin Cole, GISP
@JustinColeGIS



This is a very interesting map from @KHayhoe during the #sciencesymposium on climate change perceptions in the US #esriuc



1:55 PM · Jul 16, 2020



1



See Justin Cole, GISP's other Tweets

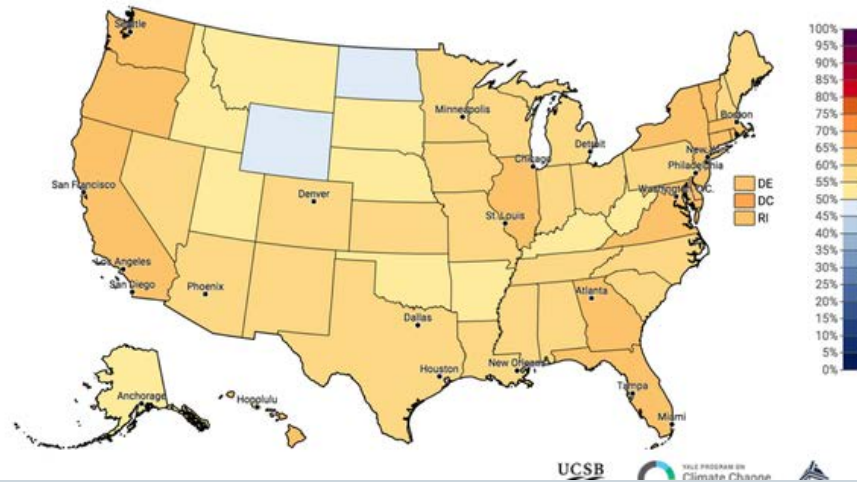


Bruce Boucek
@bruceboucek



Climate opinion polarization:
climatecommunication.yale.edu/visualizations... #EsriUC
#ScienceSymposium

Estimated % of adults who think the President should do more to address global warming (60%), 2019



Yale Climate Opinion Maps 2019 - Yale Program on Climate Change C...
Use the Yale Climate Opinion Maps to explore climate change beliefs, risk perceptions, and policy support at every geographic level in the ...
climatecommunication.yale.edu

1:55 PM · Jul 16, 2020



♡ 2 👤 See Bruce Boucek's other Tweets



Jami Dennis 🐉 🍌 🚫 🌱
@TheGISDiva



"Our brains are programmed to get a kick out of information... but when we give people new info, they typically only accept it if they already believe it. If it contradicts what they believe, their brain "shuts off."" - Tali Sharot #EsriUC @KHayhoe #ScienceSymposium @deepseadawn

1:58 PM · Jul 16, 2020



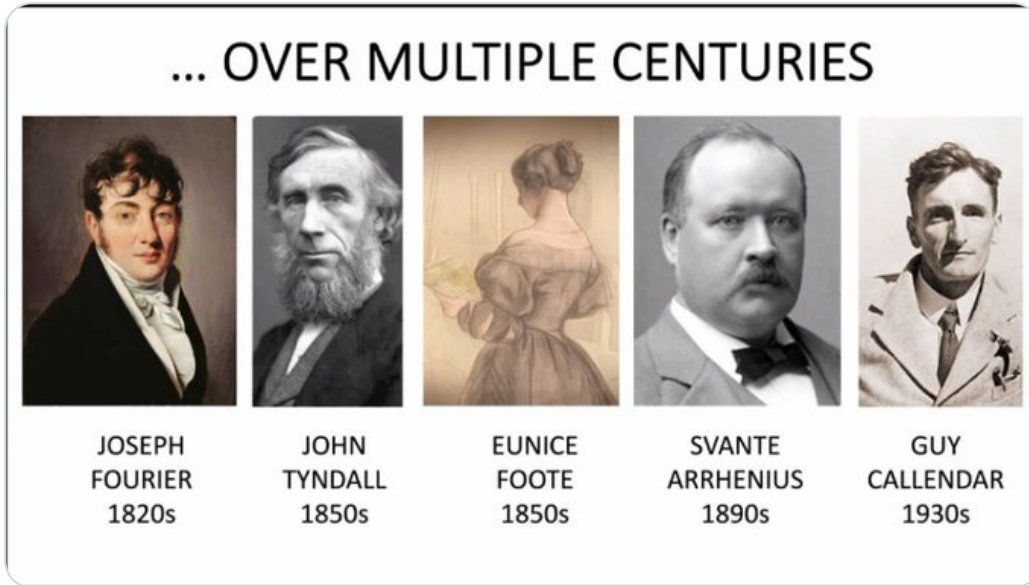
♡ 7 👤 See Jami Dennis 🐉 🍌 🚫 🌱's other Tweets



Shannon White
@shannonhwhite



Did you know [#climatechange](#) research is not new? Check out the scientists in the image below. [#esriuc](#) [#sciencesymposium](#)



1:58 PM · Jul 16, 2020



4



See Shannon White's other Tweets



Jami Dennis 🦎🍌🚫🌵
@TheGISDiva



"This wealth of information available makes us more resistant to change, because it is so easy to find data that supports our pre-existing opinion." Tali Sharot
[#EsriUC](#) [@KHayhoe](#) [#ESriUC](#) [#ScienceSymposium](#)

1:59 PM · Jul 16, 2020



3



See Jami Dennis 🦎🍌🚫🌵's other Tweets



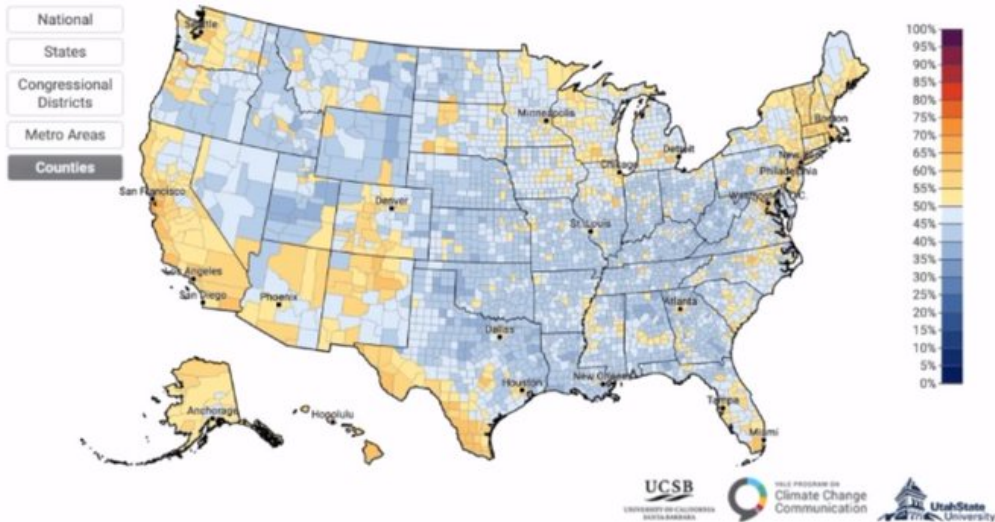
Michelle Stern
@asternmichelle



"This is a pretty depressing map". Well said and illuminating presentation by @KHayhoe about climate change science and the divided public opinion. Science doesn't care if you believe in it or not but we should all be critical of our own beliefs. #EsriUC2020 #ScienceSymposium

Estimated % of adults who think global warming is mostly caused by human activities (53%), 2019

Select Question: Global warming is caused mostly by human activities | Absolute Value
Click on map to select geography, or: Select a State | Select a County



2:01 PM · Jul 16, 2020



2



See Michelle Stern's other Tweets



Angela Alexander
@AngeAlexander88



@EsriUC #ScienceSymposium. A very engaging presentation by @KHayhoe! Check out #HotNumbers #StoryMap - Human impacts that are warming our climate! arcg.is/1LHnnf We need to #understandthescience @GIS4Teachers @GISAmbassador @deepseadawn



2:01 PM · Jul 16, 2020



13 See Angela Alexander's other Tweets



Jami Dennis
@TheGISDiva



"Even worse, as "we are exposed to contradicting information and opinions.. polarization will expand with time as people receive more and more information." - Tali Sharot #EsriUC @KHayhoe #ScienceSymposium @deepseadawn

2:01 PM · Jul 16, 2020



3 See Jami Dennis's other Tweets



Shannon White
@shannonhwhite



Confirmation bias, politics, facts, myths, the gap between those who believe and don't believe - a fascinating discussion by @KHayhoe in the #esiruc #sciencesymposium organized by @deepseadawn

The collage consists of four panels:

- Top Left:** Text snippet: "ealth of information available makes u... it to change, because it is so easy to fi... that supports our pre-existing opinion".
- Top Right:** Two line graphs. The left graph shows 'Probability of correct response' vs 'Ordinary Science Intelligence'. The right graph shows 'Probability of being' vs 'Ordinary Science Intelligence' with lines for 'Liberal' and 'Conservative'.
- Bottom Left:** Text snippet: "worse, as 'we are exposed to contrad... ation and opinions... polarization will... h time as people receive more and m... information.'" followed by a horizontal line and the name 'TALI SHAROT'.
- Bottom Right:** A dark box with the text 'AND YET HERE WE ARE' next to a flowchart titled 'Percentage of Americans in each party who say the issue is a top priority in 2010'.

2:01 PM · Jul 16, 2020



3 See Shannon White's other Tweets



Jami Dennis
@TheGISDiva



Thank goodness @KHayhoe is offering thoughts on how to break this cycle of polarization! #EsriUC #ScienceSymposium @deepseadawn

2:02 PM · Jul 16, 2020



2 See Jami Dennis 🦎🍌🚫🌵's other Tweets



Jami Dennis
@TheGISDiva



"We agree with the science but we don't think it will affect us." (on climate change) - @KHayhoe #EsriUC #ScienceSymposium @deepseadawn

2:04 PM · Jul 16, 2020



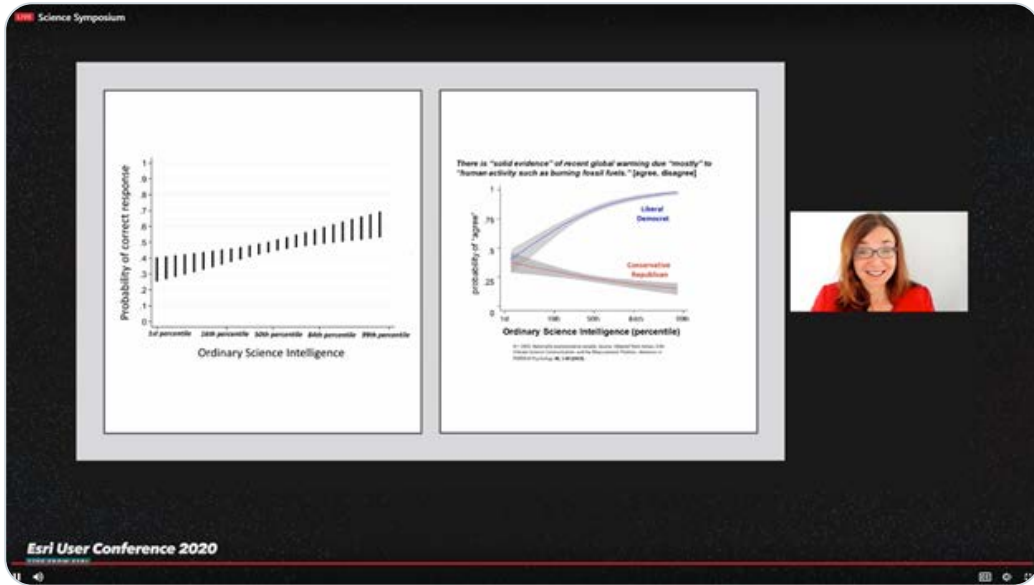
2 See Jami Dennis 🦎🍌🚫🌵's other Tweets



Meg S.
@megsmaps



More educated people are more subject to [#confirmationbias](#). [#climatechange](#) [#sciencesymposium](#) [#EsriUC](#)



2:06 PM · Jul 16, 2020



3



See Meg S.'s other Tweets



Meg S.
@megsmaps

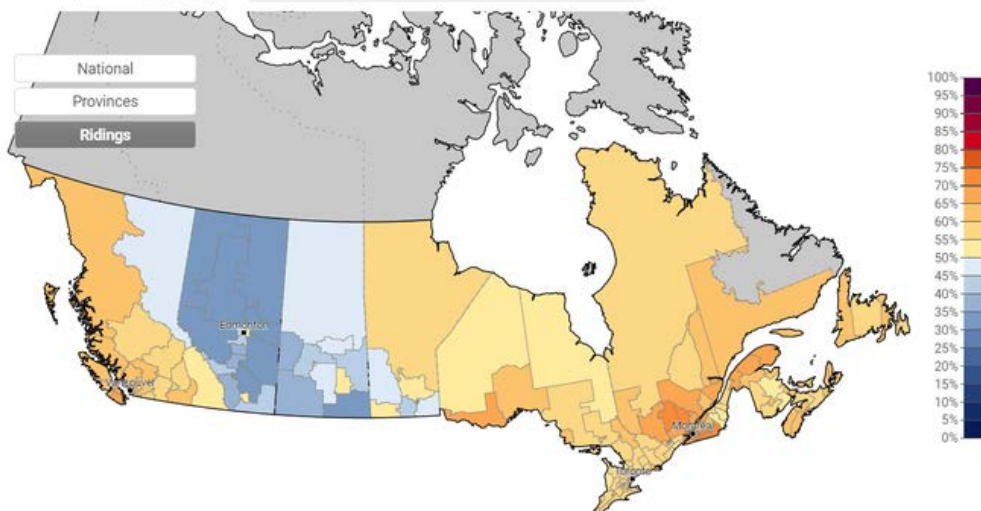


The same [#confirmationbias](#) exists in Canada. [#climatechange](#) [#sciencesymposium](#) [#EsriUC](#)

Estimated % of adults who think earth is getting warmer partly or mostly because of human activity

Display model output: Earth is getting warmer partly or mostly because of human activity

Click on map to select geography, or: Select a Riding



2:07 PM · Jul 16, 2020



3



See Meg S.'s other Tweets

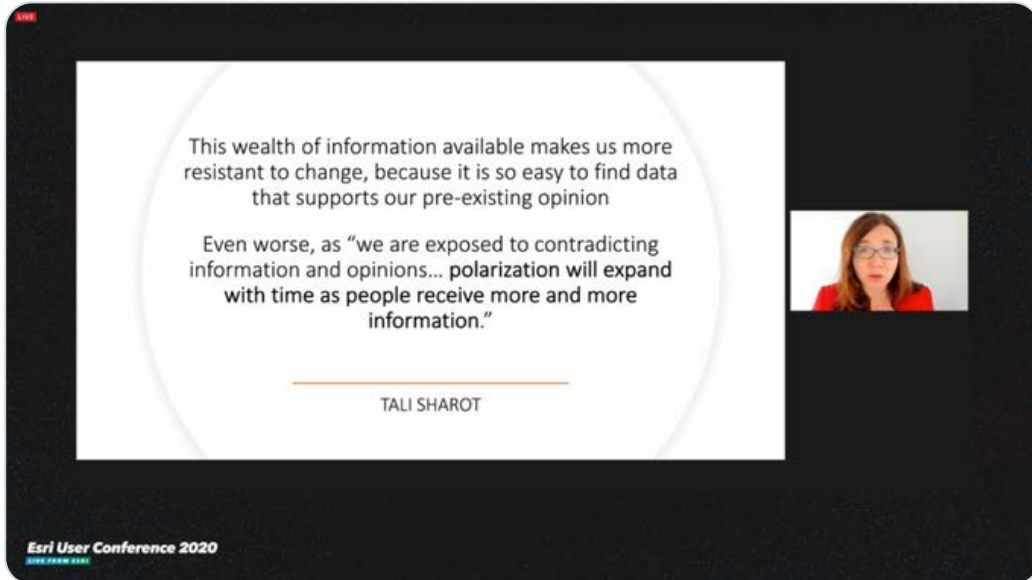


Jonathan Van Dusen

@jevandusen



Incredibly inspiring talk from @KHayhoe at #EsriUC #ScienceSymposium on acceptance of climate change -- that we reject data that doesn't fit our prior beliefs and that political polarization plays a greater role than our own scientific literacy. So not just abt giving more facts!



2:07 PM · Jul 16, 2020



♥ 13



See Jonathan Van Dusen's other Tweets



Shannon White
@shannonhwhite



#esriuc #sciencesymposium Discussion of vicious cycle of #climatechange. The real problems aren't politics, intelligence, overwhelming amounts of data. It's that 1) people don't think it's impacting us 2) people don't think there is anything they can do



2:07 PM · Jul 16, 2020 from Virginia, USA



13



See Shannon White's other Tweets



Jami Dennis 🐉 🍌 🚫 🌱
@TheGISDiva



"The real solution (to climate change): to talk about it."
@KHayhoe #EsriUC #ScienceSymposium @deepseadawn

2:08 PM · Jul 16, 2020



1



See Jami Dennis 🐉 🍌 🚫 🌱's other Tweets



Jami Dennis 🐉 🍌 🚫 🌱
@TheGISDiva



It always comes down to "what's in it for me." We must talk about how it affects us personally before we will take action. @KHayhoe #EsriUC #ScienceSymposium @deepseadawn

2:09 PM · Jul 16, 2020



2



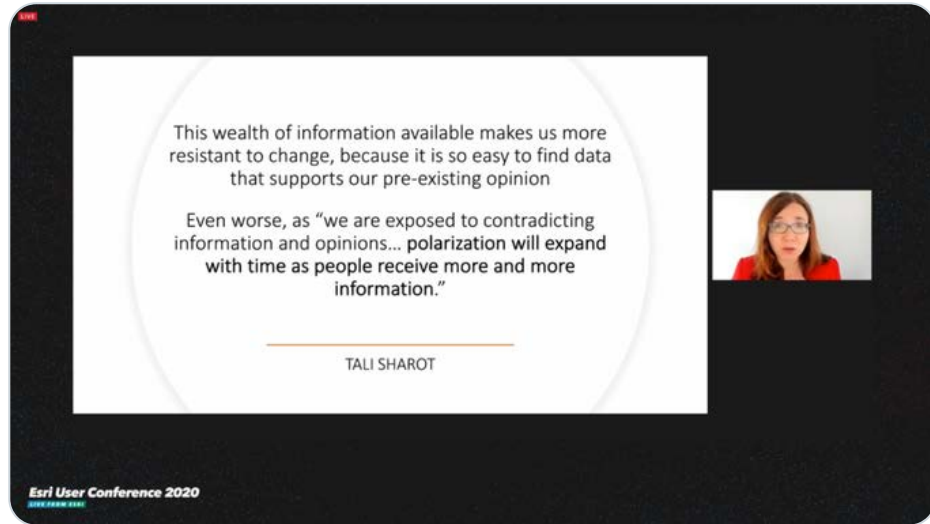
See Jami Dennis 🐉 🍌 🚫 🌱's other Tweets



Jonathan Van Dusen @jevandusen · Jul 16, 2020

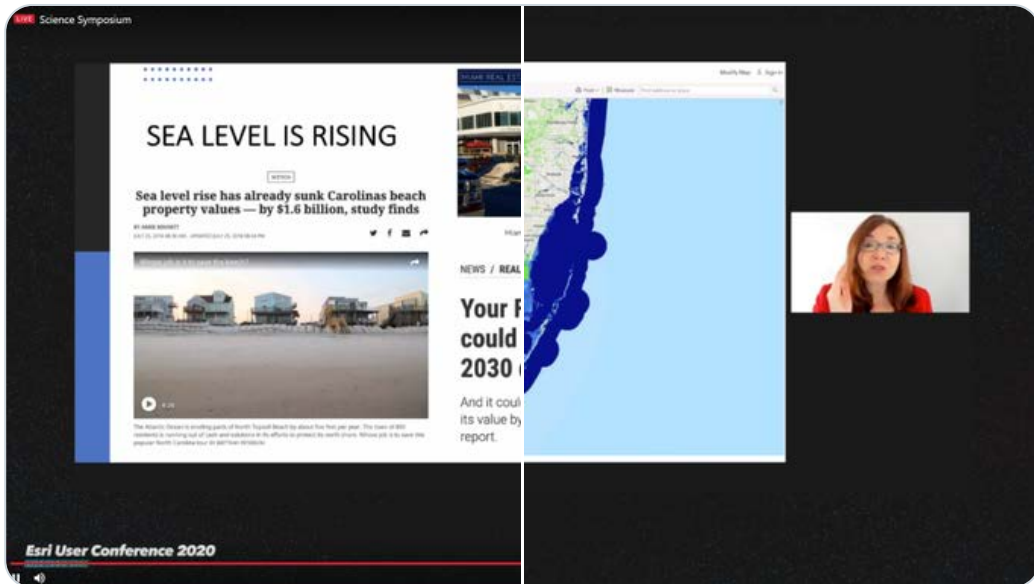


Incredibly inspiring talk from @KHayhoe at #EsriUC #ScienceSymposium on acceptance of climate change -- that we reject data that doesn't fit our prior beliefs and that political polarization plays a greater role than our own scientific literacy. So not just abt giving more facts!



Jonathan Van Dusen @jevandusen

So what do we do? @KHayhoe suggests one way is to make it local so people know it will affect them -- and there's a clear role for mapping and geodata in this, such as for the Florida coast here using @LivingAtlas data. #EsriUC #ScienceSymposium



2:12 PM · Jul 16, 2020



2



See Jonathan Van Dusen's other Tweets



Shannon White
@shannonhwhite



What image comes to mind when you think of [#climatechange](#)? The polleverywhere for [#esriuc](#) [#sciencesymposium](#) shows typical responses. Polar bears - most people have never had contact with them - we need to make the science relevant to people.



2:12 PM · Jul 16, 2020 from Virginia, USA



6



See Shannon White's other Tweets



Jami Dennis 🐸 🍌 🚫 🌱
@TheGISDiva



Data making it personal is still depressing. I hope [@KHayhoe](#) is going to offer some positive way to bring out the importance of climate change and what we can do about it. [#EsriUC](#) [#ScienceSymposium](#)
[@deepseadawn](#)

2:17 PM · Jul 16, 2020



2



See Jami Dennis 🐸 🍌 🚫 🌱's other Tweets



LTighe
@DrLTighe



@Esri #ScienceSymposium



2:20 PM · Jul 16, 2020



3 See LTighe's other Tweets



Jami Dennis 🦎🍌🚫🌵
@TheGISDiva



Talk about real solutions and how it will make our individual lives better. @Khayhoe #EsriUC #ScienceSymposium @deepseadawn

2:21 PM · Jul 16, 2020



2 See Jami Dennis 🦎🍌🚫🌵's other Tweets



Shannon White
@shannonhwhite



Not inundating with science data (i.e. charts and graphs) , but using news and maps to bring #climatechange to a personal level #esriuc #sciencesymposium @KHayhoe @deepseadawn 1/3 #sealevelrise example



2:23 PM · Jul 16, 2020



8



See Shannon White's other Tweets

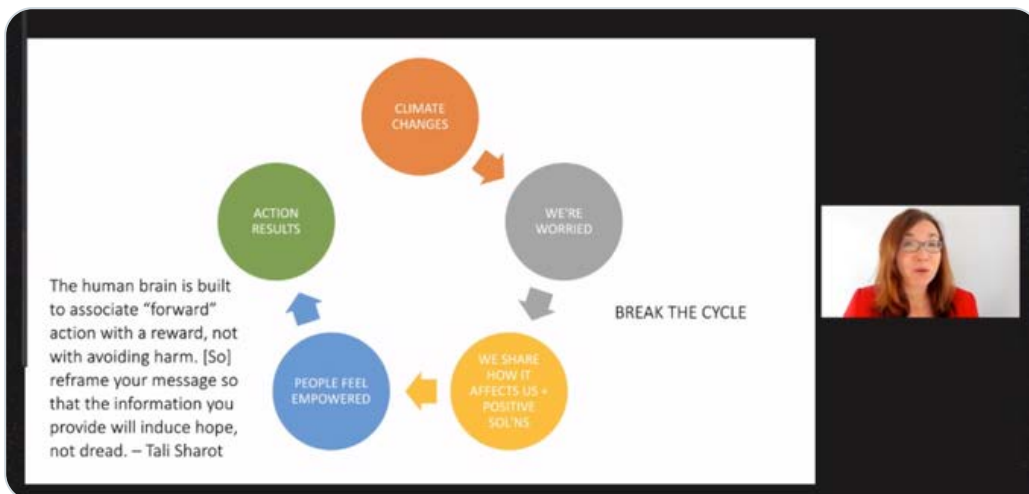


Jami Dennis
@TheGISDiva



"The first step to tackling climate change: talk about it and what we can do to fix it."

@KHayhoe #EsriUC #ScienceSymposium @deepseadawn



2:24 PM · Jul 16, 2020



4



See Jami Dennis 🌱🍌🚫🌿's other Tweets



Jami Dennis 🐸🍌🚫🌿
@TheGISDiva



That was amazing!! Excellent presentation by @KHayhoe
#EsriUC #ScienceSymposium @deepseadawn

2:25 PM · Jul 16, 2020



♡ 5 👤 See Jami Dennis 🐸🍌🚫🌿's other Tweets



Banannalisa 7
@AS_Twitty



That was freaking awesome 🙌🙌

#ScienceSymposium #EsriUC #EsriUC2020



GIF

2:27 PM · Jul 16, 2020



♡ 7 👤 See Banannalisa 7's other Tweets



Shannon White
@shannonhwhite



Not inundating with science data (i.e. charts and graphs) , but using news and maps to bring #climatechange to a personal level #esriuc #sciencesymposium @KHayhoe @deepseadawn 2/3 #risingtemp example

PEAK HEAT IN THE AFTERNOON
WEDNESDAY 4:08 PM EDT
HOT & HUMID
HEAT INDEX VALUES GREATER THAN 100°

Wildfires Are Pushing Californians Out of the State: 'If It's Gone, We're Gone'
Tuesday: More updates from the Kincaid and Getty fires; and how to help.

Phoe
Of He
July 9, 2018 3:0
Heard on Martin
**Clim
heat**

TEMPERATURE IS INCREASING

Figure 2.2: Observed and Projected Changes in Carbon Emissions and Temperature

The figure contains two line graphs. The left graph, 'Global Carbon Emissions', shows emissions in GtCO2e from 1980 to 2100. It includes a solid line for 'Observed' data, a dashed line for 'Higher Scenario (RCP8.5)', and a solid line for 'Lower Scenario (RCP2.6)'. The right graph, 'Global Average Temperature Change', shows temperature change in degrees Celsius from 1980 to 2100. It includes a solid line for 'Observed' data, a dashed line for 'Higher Scenario (RCP8.5)', and a solid line for 'Lower Scenario (RCP2.6)'. Both graphs show a significant upward trend in both emissions and temperature change, with the higher scenario showing much steeper increases.

2:27 PM · Jul 16, 2020



3



See Shannon White's other Tweets

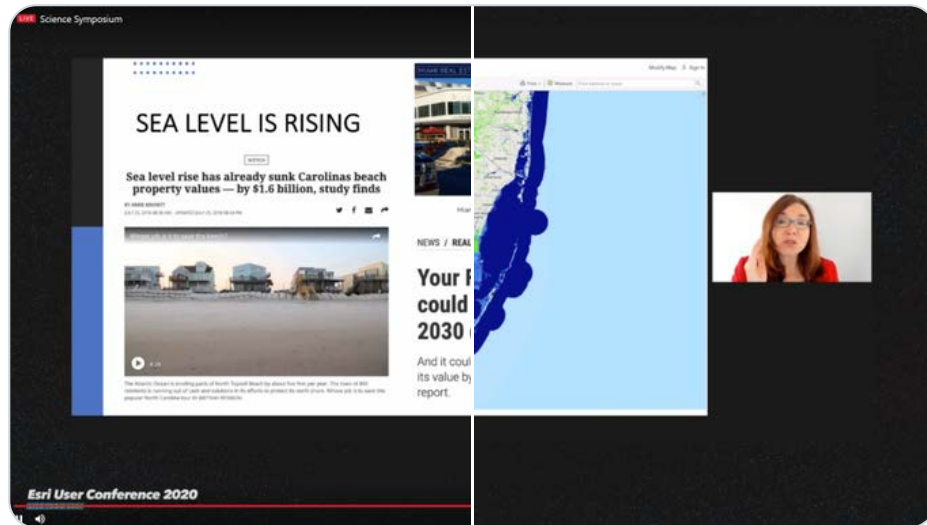


Jonathan Van Dusen @jevandusen · Jul 16, 2020



Replying to @jevandusen

So what do we do? @KHayhoe suggests one way is to make it local so people know it will affect them -- and there's a clear role for mapping and geodata in this, such as for the Florida coast here using @LivingAtlas data. #EsriUC #ScienceSymposium



Jonathan Van Dusen
@jevandusen

So here's the challenge for educators and anyone involved in science communication: instead of going straight to doomsday scenarios and more numbers when we talk about climate change, we need to share solutions and make it empowering. #EsriUC #ScienceSymposium @KHayhoe



2:27 PM · Jul 16, 2020



2



See Jonathan Van Dusen's other Tweets



James Boxall
@JamesGIS



"Using the right data. Not using more scary facts." What an interesting approach to climate change [#SciComms](#) That shifts the most important action: talking about it at a scale that affects us, now. Wow [@KHayhoe](#) [#esriUC](#) [#ScienceSymposium](#)

2:29 PM · Jul 16, 2020



♡ 5 👤 See James Boxall's other Tweets



Jami Dennis 🐉 🍌 🚫 🌵
@TheGISDiva



"The most important thing you can do to fight climate change: Talk About it" [@khayhoe](#) [#EsriUC](#) [#ScienceSymposium](#) [@deepseadawn](#)



The most important thing you can do to fight climate change: talk ab...
How do you talk to someone who doesn't believe in climate change?
Not by rehashing the same data and facts we've been discussing for ...
[ted.com](#)

2:29 PM · Jul 16, 2020



♡ 1 👤 See Jami Dennis 🐉 🍌 🚫 🌵's other Tweets



Jennifer Whytlaw
@millennial_gis



“Using our voice to advocate for change” is the single most important thing we can do to take action on [#ClimateChange](#) [@KHayhoe](#) [#sciencesymposium](#) [#esriUC](#)

2:29 PM · Jul 16, 2020



2



See Jennifer Whytlaw's other Tweets



Meg S.
@megsmaps



Explain why [#climatechange](#) matters ... locally. Show how it affects you and your community. Tell others what solutions exist. [#breakthecycle](#) [#scicomm](#) Use hope, not dread. [#takehome](#) message from Dr. [@KHayhoe](#) [#sciencesymposium](#) [#EsriUC](#)

2:30 PM · Jul 16, 2020



2



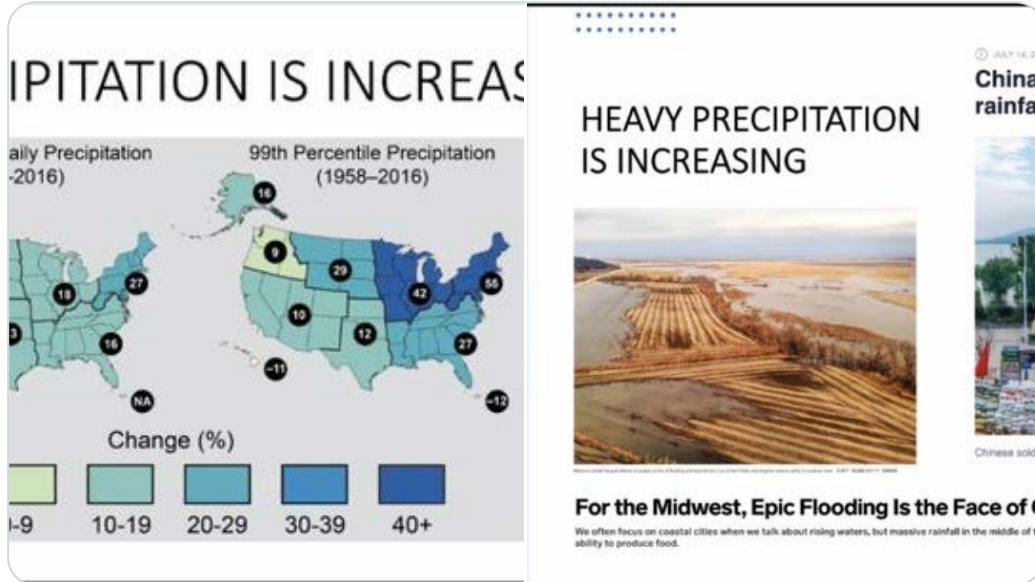
See Meg S.'s other Tweets



Shannon White
@shannonhwhite



Not inundating with science data (i.e. charts and graphs) , but using news and maps to bring #climatechange to a personal level #esriuc #sciencesymposium @KHayhoe @deepseadawn 3/3 #risingperception example think about mudslides, flooding, etc



2:30 PM · Jul 16, 2020



3



See Shannon White's other Tweets



Lisa Mccraw
@Quincunxm



We have the science that climate is changing, and Yes, we know that humans are responsible. #Esriuc #sciencesymposium



Bruce Boucek @bruceboucek

Hot Numbers #EsriUC #ScienceSymposium @KHayhoe - thanks!: storymaps.esri.com/stories/2018/h...

2:32 PM · Jul 16, 2020



1



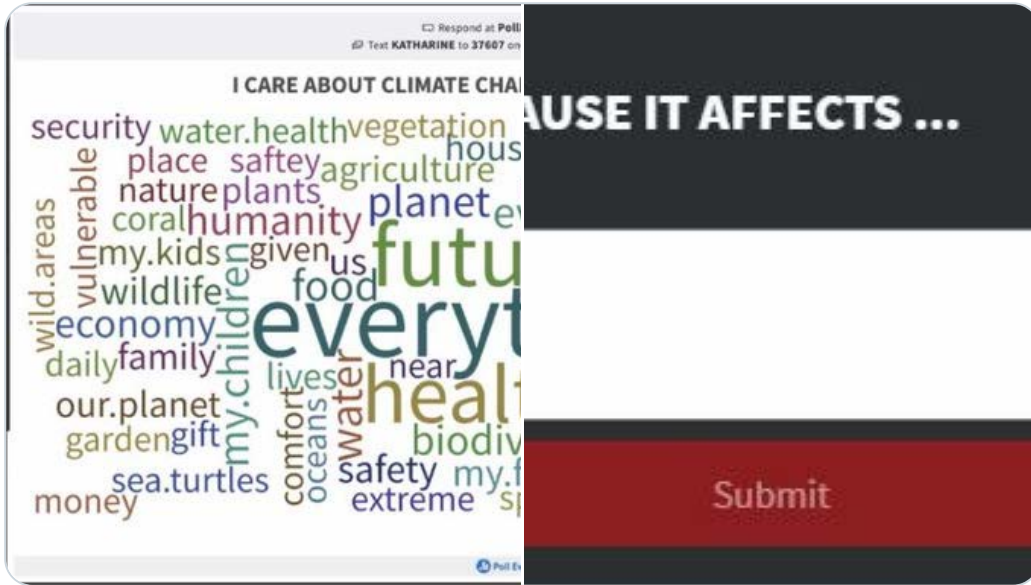
See Lisa Mccraw's other Tweets



Shannon White
@shannonhwhite



I care about #climatechange because it affects... a poll during the #esriuc #sciencesymposium Great realtime wordle. @KHayhoe @deepseadawn



2:33 PM · Jul 16, 2020 from Virginia, USA



5



See Shannon White's other Tweets



Lisa Mccraw
@Quincunxm

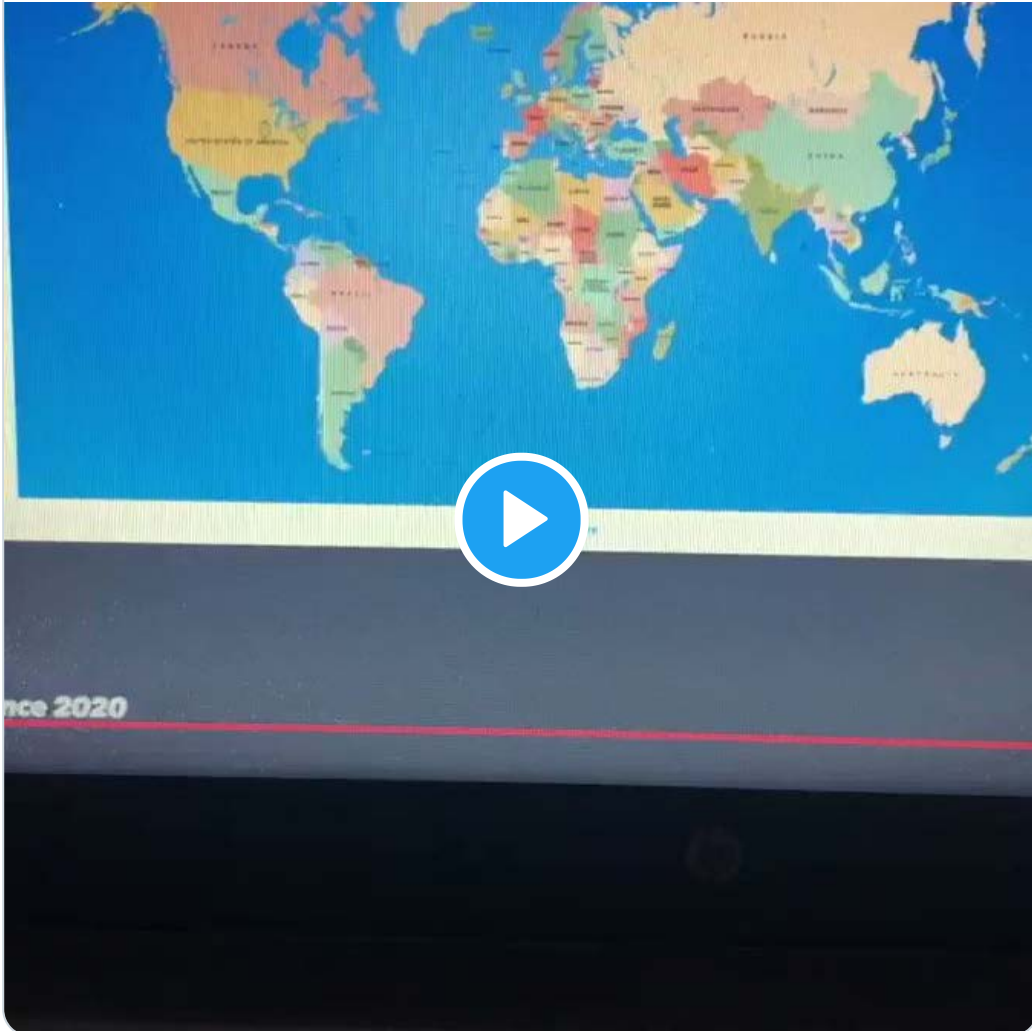


And there I am, barely visible but Southern Mississippi... I AM there #Esriuc #sciencesymposium



Altamira Consulting, LLC @AltamiraAdvTech

So cool! Watch people check-in live from where they're attending the #ScienceSymposium. What power. 🙌👏 #EsriUC



2:34 PM · Jul 16, 2020



2



See Lisa Mccraw's other Tweets



Angela Alexander
@AngeAlexander88



@EsriUC #2020 #ScienceSymposium Thanks for the Inspiring talk @KHayhoe! Check out more from her #talkaboutclimatechange #tedtalk #itscloserthanyouthink @deepseadawn



The most important thing you can do to fight climate change: talk ab...
How do you talk to someone who doesn't believe in climate change?
Not by rehashing the same data and facts we've been discussing for ...
[ted.com](https://www.ted.com)

2:35 PM · Jul 16, 2020



5



See Angela Alexander's other Tweets



Shannon White
@shannonhwhite



How do we explain why [#climatechange](#) matters where a person lives (always comes back to the whys of where in geography!?!)

[#esriuc](#) [#sciencesymposium](#) @KHayhoe
@deepseadawn

HOW WE CAN DO IT

INSPIRE
TO ADDRESS SOLUTION AVERSION

HOW?
BY EXPLAINING WHY IT MATTERS TO US HERE AND NOW
... AND POSITIVE WAYS WE CAN WORK TOGETHER TO FIX IT
USING THE RIGHT KIND OF DATA

The human brain is built to associate "forward" action with a reward, not with avoiding harm. [So] reframe your message so that the information you provide will induce hope, not dread. – Tali Sharot

Diagram illustrating the cycle: CLIMATE CHANGE leads to WE'RE WORRIED, which leads to BREAK THE CYCLE, which leads to WE SHARE HOW IT WILL LOOK IF YOU DON'T ACT, which leads to PEOPLE FEEL EMPOWERED, which leads to ACTION RESULTS, which leads back to CLIMATE CHANGE.

2:37 PM · Jul 16, 2020 from Virginia, USA



5 See Shannon White's other Tweets



Barbara Kent
@SDGeoGirl



Global warming has to be brought down to the local level - how it affects us - in order to change behavior/thoughts/actions. Impactful talk by @KHayhoe [#esriuc](#) [#sciencesymposium](#)

2:37 PM · Jul 16, 2020



4 See Barbara Kent's other Tweets



Jami Dennis 🐸🍌🗺️🌱
@TheGISDiva



If you missed @KHayhoe at #EsriUC [#ScienceSymposium](#), it will be posted in the UC site and be made available later this year to everyone.
@deepseadawn

2:39 PM · Jul 16, 2020



2 See Jami Dennis 🐸🍌🗺️🌱's other Tweets



Shannon White
@shannonhwhite



There is no one single action to decrease your carbon footprint. [#steponthescale](#) and look at [drawdown.org](#)

[#esriuc](#) [#sciencesymposium](#)
[@KHayhoe](#)
[@deepseadawn](#)



Project Drawdown

Our mission is to help the world reach “Drawdown”— the point in the future when levels of greenhouse gases in the atmosphere stop ...

[drawdown.org](#)

2:39 PM · Jul 16, 2020



5



See Shannon White's other Tweets



Lisa Mccraw
@Quincunxm



Amazing that [@KHayhoe](#) streamlines her travel for talks and education to minimize her carbon footprint.. the kind of dedicated human I inspire to be.. one day [#Esriuc](#) [#sciencesymposium](#) [#wherecanIgetmoreofKatharineHayhoe](#)

2:41 PM · Jul 16, 2020



15



See Lisa Mccraw's other Tweets



Shannon White
@shannonhwhite



Check out Global Weirding by @KHayhoe on YouTube and Facebook

youtube.com/channel/UCi6Rk...

#esriuc #sciencesymposium



Global Weirding with Katharine Hayhoe
Global Weirding: Climate, Politics, and Religion with Katharine Hayhoe is produced by KTTZ Texas Tech...
youtube.com

2:42 PM · Jul 16, 2020



5



See Shannon White's other Tweets



Jami Dennis 🦎 🍌 🚫 🌵
@TheGISDiva



Thank you @deepseadawn ! Best part of #EsriUC (for me) continues to be the #ScienceSymposium

2:42 PM · Jul 16, 2020



1



See Jami Dennis 🦎 🍌 🚫 🌵's other Tweets

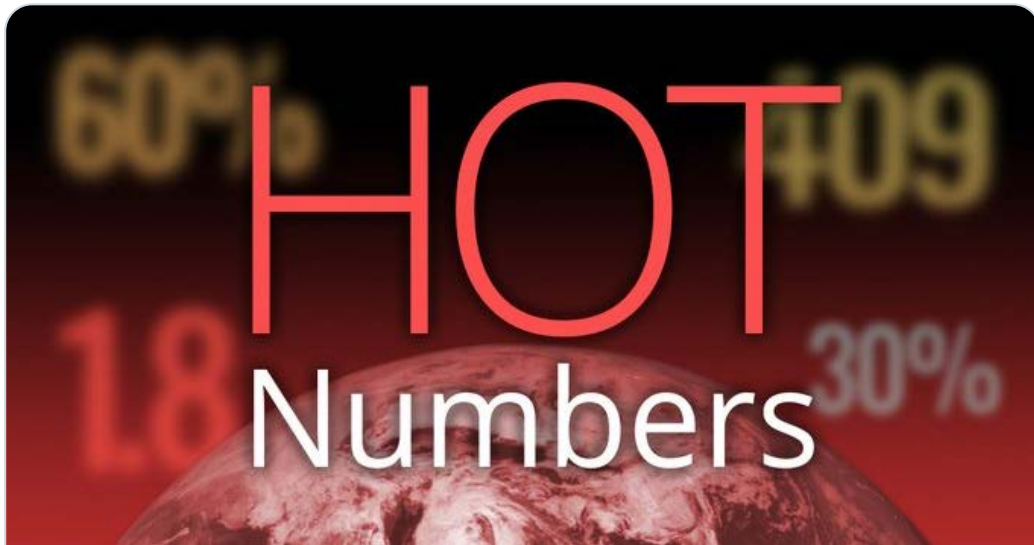


Shannon White
@shannonhwhite



Have you seen the Hot Numbers Storymap?
storymaps.esri.com/stories/2018/h...

#esriuc #sciencesymposium



Hot Numbers

It's a fact: Human impacts are warming our climate and changing our planet.

storymaps.esri.com

2:42 PM · Jul 16, 2020



5



See Shannon White's other Tweets



WomenInGISAZ 🌱🌍🗺️
@WomenInGisaz



Another excellent #EsriUC #ScienceSymposium from @deepseadawn ! I don't know how she finds the most amazing speakers, but she does. @KHayhoe was amazing!!



Jami Dennis 🌱🌍🗺️🌱 @TheGISDiva

More @KHayhoe at Global Weirding
youtube.com/channel/UCi6Rk...

2:43 PM · Jul 16, 2020



1



See WomenInGISAZ 🌱🌍🗺️'s other Tweets



Shannon White
@shannonhwhite



Engage in the conversations of the [#sciencesymposium](#) after the [#esriuc](#) on GeoNet at community.esri.com/groups/sciencesymposium

2:46 PM · Jul 16, 2020



2



See Shannon White's other Tweets



Shannon White
@shannonhwhite



Did you oversleep & miss the science symposium?

You can find [@deepseadawn](#) [#esriuc](#) [#sciencesymposium](#) opening comments and PPT at esriurl.com/symposium20 It was recorded so we can go back and watch what you missed (or rewatch!)

It would make a great [@gisday](#) video to share.



2:52 PM · Jul 16, 2020 from Virginia, USA



4



See Shannon White's other Tweets



Jean Tong
@jeandtong

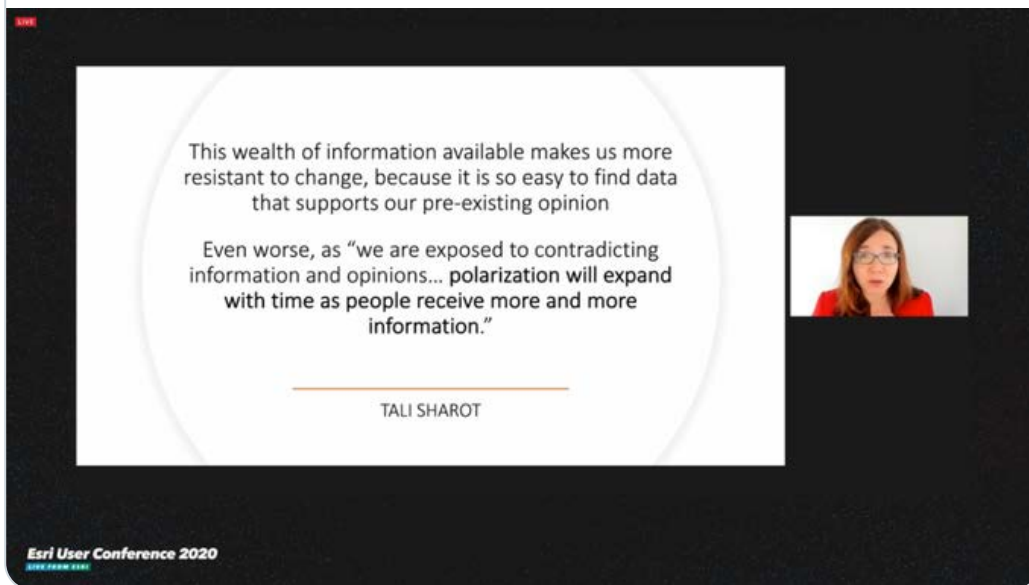


Educators, if you missed the [#ScienceSymposium](#) at the [#EsriUC](#) you will be able to view a recording of [@KHayhoe](#) engaging presentation in late summer. Can't wait? Check out her [@TEDTalks](#) ted.com/talks/katharin... [@staoapso](#) [#STEMeducation](#) [@ATASciCouncil](#) [@IngeniumCa](#)



Jonathan Van Dusen @jevandusen

Incredibly inspiring talk from [@KHayhoe](#) at [#EsriUC](#) [#ScienceSymposium](#) on acceptance of climate change -- that we reject data that doesn't fit our prior beliefs and that political polarization plays a greater role than our own scientific literacy. So not just abt giving more facts!



3:23 PM · Jul 16, 2020



16



See Jean Tong's other Tweets



NCAR GIS
@ncargis



I did not get up in time to watch @KHayhoe keynote speech at the #scienceSymposium #esriUC. But am able to watch it now through the recorded session.



3:54 PM · Jul 16, 2020



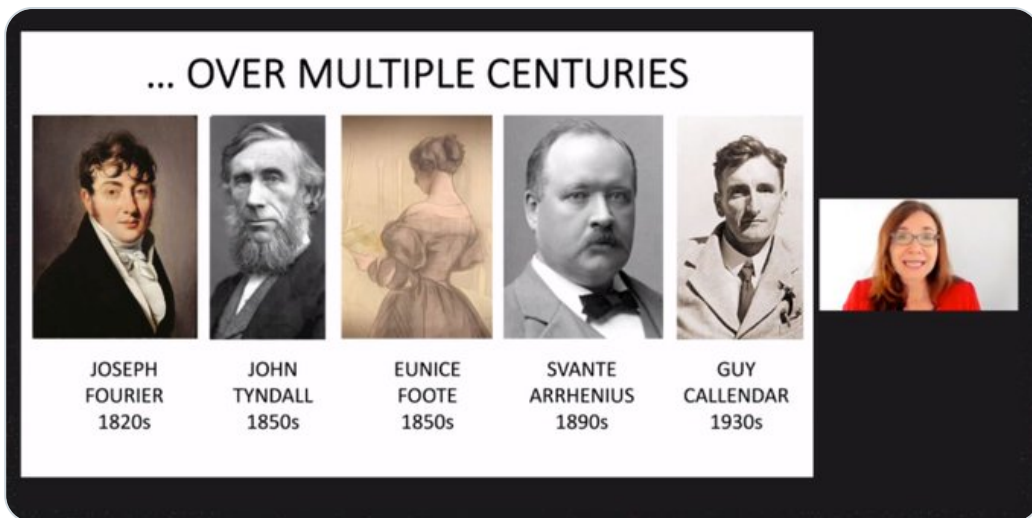
7 See NCAR GIS's other Tweets



NCAR GIS
@ncargis



#ScienceSymposium #esriUC scientists have been communicating facts about how our climate is changing over multiple centuries. Thanks @KHayhoe



4:09 PM · Jul 16, 2020



9 See NCAR GIS's other Tweets



Lisa McCraw

@Quincunxm



Day 4 Best advice received is to share how the facts affect me personally and what positive solutions look like, can be done. Sharing results will break the cycle of polarizing the data, over politicizing facts

[#hopenotdespair](#) drawdown.org [#Sciencesymposium](#)
[#Esriuc](#)



Project Drawdown

Our mission is to help the world reach “Drawdown”— the point in the future when levels of greenhouse gases in the atmosphere stop ...

drawdown.org

4:10 PM · Jul 16, 2020



See Lisa McCraw's other Tweets



NCAR GIS
@ncargis



#ScienceSymposium Tali Sharot " Reframe your message so that the information you provide will induce hope, not dread" @KHayhoe great talk #esriUC

The human brain is built to associate "forward" action with a reward, not with avoiding harm. [So] reframe your message so that the information you provide will induce hope, not dread. – Tali Sharot

CLIMATE CHANGES

WE'RE WORRIED

WE SHARE HOW IT AFFECTS US + POSITIVE SOLUTIONS

PEOPLE FEEL EMPOWERED

ACTION RESULTS

BREAK THE CYCLE

4:53 PM · Jul 16, 2020



5 See NCAR GIS's other Tweets



Dr. Dawn Wright
@deepseadawn



Registered for the Esri #ScienceSymposium but missed the early morning start? Watch it again at uc2020.esri.com/live-stream/15... And THANK you again @KHayhoe! One comment: "This has been the most engaging presentation that I've seen through the whole #EsriUC"



2020 Esri User Conference: July 13–16 | Join Us Virt...
Join us virtually July 13–16, 2020, for the world's largest GIS conference. Attend virtual technical ...
uc2020.esri.com

8:07 PM · Jul 16, 2020



32 See Dr. Dawn Wright's other Tweets



Lori
@lorisscott



So grateful to be part of today's #EsriUC2020 #ScienceSymposium with @KHayhoe and @deepseadawn. Si se puedo!



S Schupbach @saschup

Thank you @KHayhoe for once again providing clear guidance and hope for obtaining resilience in the face of #ClimateChange at #UC2020. I pledge to talk about it!!

This is our word cloud of the audience's response to why they care.

I CARE ABOUT CLIMATE CHANGE BECAUSE IT AFFECTS ...



12:47 AM · Jul 17, 2020



♥ 10



See Lori's other Tweets



Dr. Dawn Wright
@deepseadawn



#ScienceSymposium

 **ArcGIS StoryMaps** @ArcGISStoryMaps

During #EsriUC Science Symposium with @DeepSeaDawn, Katharine Hayhoe @TTUClimate talked about sharing science by making it personal.

See the innovative ways that orgs like @JaneGoodallInst & @NOAA are using ArcGIS #StoryMaps for scientific communication. arcgis.com/0by1yr



5:04 PM · Jul 17, 2020



15



See Dr. Dawn Wright's other Tweets



Kelly Huh, Ph.D.
@glaciergeek



Science met GIS! Shoutout to @KHayhoe! A great opportunity for all in #ESRIUC2020 We all want to have more opportunities! #ESRI #sciencesymposium

 **Dr. Dawn Wright** @deepseadawn

Registered for the Esri #ScienceSymposium but missed the early morning start? Watch it again at uc2020.esri.com/live-stream/15... And THANK you again @KHayhoe! One comment: "This has been the most engaging presentation that I've seen through the whole #EsriUC"

5:36 PM · Jul 17, 2020



See Kelly Huh, Ph.D.'s other Tweets



Shannon White
@shannonhwhite



And my award for the best use of @polleverywhere to engage attendees about #climatechange during the #esriuc #sciencesymposium goes to @KHayhoe

Seriously - go back & watch if you didn't attend live.



Prof. Katharine Hayhoe @KHayhoe

So often we think of climate change as a "polar bear" issue, or a "future generations" issue when the truth is that it is HERE and it is NOW - but here's what @Esri attendees said when I asked them why they care. They get it!



9:25 AM · Jul 18, 2020 from Virginia, USA



4



See Shannon White's other Tweets



Dr. Dawn Wright
@deepseadawn



The #EsriUC #ScienceSymposium was another great success thanks to the amazing @KHayhoe and the *1183* virtual attendees! Thanks to friends on Twitter and ecoaliceru for these shots. @ Redlands, California [instagram.com/p/CCzoG68pmel/...](https://www.instagram.com/p/CCzoG68pmel/)

2:20 AM · Jul 19, 2020 from Redlands, CA



36



See Dr. Dawn Wright's other Tweets



S Schupbach

@saschup



Thank you @KHayhoe for once again providing clear guidance and hope for obtaining resilience in the face of #ClimateChange at #UC2020. I pledge to talk about it!!

This is our word cloud of the audience's response to why they care.



2:54 PM · Jul 16, 2020



♡ 36



See S Schupbach's other Tweets



Mark Cygan

@Mark_Cygan



If you enjoyed Esri #Science Symposium led by #Esri Chief #Scientist Dr. Dawn Wright @deepseadawn @ #esriUC #esriUC2020 you'll like this book #GIS #geospatial [Inkd.in/gkAqaWW](https://www.linkedin.com/company/esri)

10:00 PM · Jul 16, 2020



♡ 5



See Mark Cygan's other Tweets

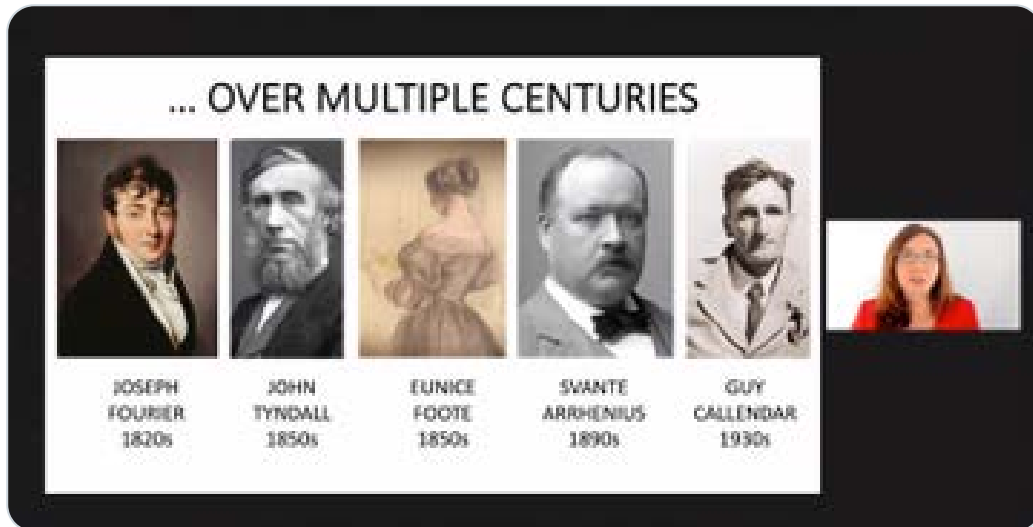


WomenInGISAZ @WomenInGisaz



Scientists have been studying climate change for years!
And (note the female scientist in the middle :))

@KHayhoe #EsriUC @deepseadawn



4:47 PM · Jul 16, 2020



Jared Rennie @jjrennie · Jul 16, 2020



Ha! @deepseadawn is sending @KHayhoe a Duke Kaboom toy as thanks for speaking at #EsriUC

FOR REJON!



Prof. Katharine Hayhoe @KHayhoe

I was about to answer your question when the slido closed so I don't know if you saw it! My answer was, "talk about iowa not sea ice"

4:51 PM · Jul 16, 2020



2



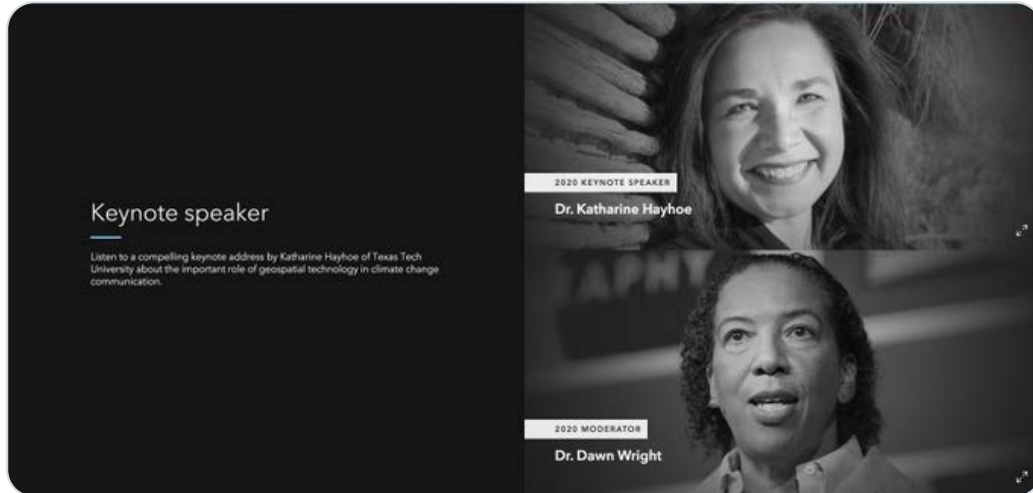
See Prof. Katharine Hayhoe's other Tweets



ArcNews
@ArcNewsMagazine



Did you tune into today's Science Symposium at the #EsriUC? Find out more about how @Esri continually contributes to #science and some of the key #GIS resources it makes available in this new ArcNews column by @deepseadawn: ow.ly/PXCM50AA6NG



2:42 PM · Jul 16, 2020



♡ 14 👤 See ArcNews's other Tweets



Craig Williams
@williamsraig



What a way to start the day! Thank you @deepseadawn and @KHayhoe for this presentation and discussion.

 **GIS and Science** @GISandScience

We can't wait to welcome all of you to the Sciences Symposium from Esri #uc2020 ow.ly/qBXR50AxmVp Symposium begins at 6:15 a.m. PDT on Thurs. 7/16. Hear from @DeepseaDawn and Katharine Hayhoe from the Climate Center at Texas Tech.

2:42 PM · Jul 16, 2020



♡ 7 👤 See Craig Williams's other Tweets

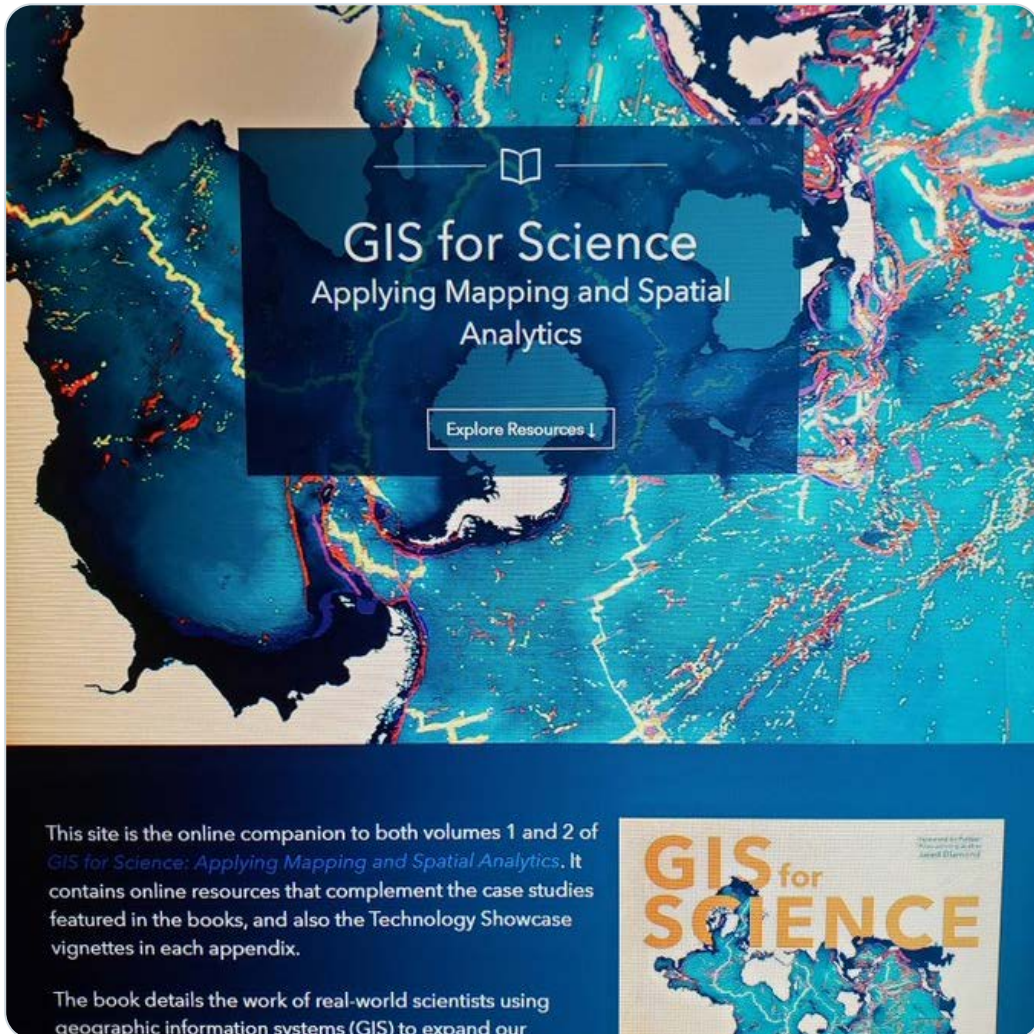


Dave Blaine

@CCI_Dave



A tremendous [#EsriUC](#) Science Symposium presented by [@deepseadawn](#) with an infectious enthusiasm discussion on [#ClimateChange](#) from [@KHayhoe](#) [#GISforScience](#)



2:38 PM · Jul 16, 2020



8



See [@Dave Blaine's other Tweets](#)



James Boxall

@JamesGIS



The coolest virtual conference host is the one with [#LEGO](#) and Star Wars figures in the background while a puppy named Riley listens intently! [#ScienceSymposium20](#) This was an awesome session [@deepseadawn](#) THANK YOU

2:35 PM · Jul 16, 2020



2



See [James Boxall's other Tweets](#)

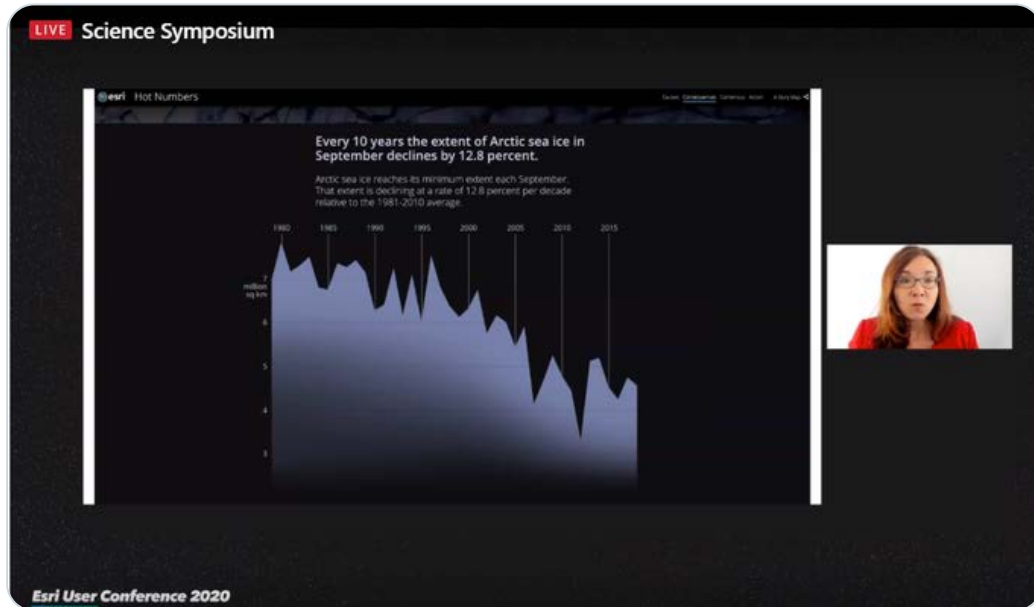


ArcGIS StoryMaps
@ArcGISStoryMaps



During #EsriUC Science Symposium with @DeepSeaDawn, Katharine Hayhoe @TTUClimate talked about sharing science by making it personal.

See the innovative ways that orgs like @JaneGoodallInst & @NOAA are using ArcGIS #StoryMaps for scientific communication. arcg.is/0by1yr



2:32 PM · Jul 16, 2020



20



See ArcGIS StoryMaps's other Tweets



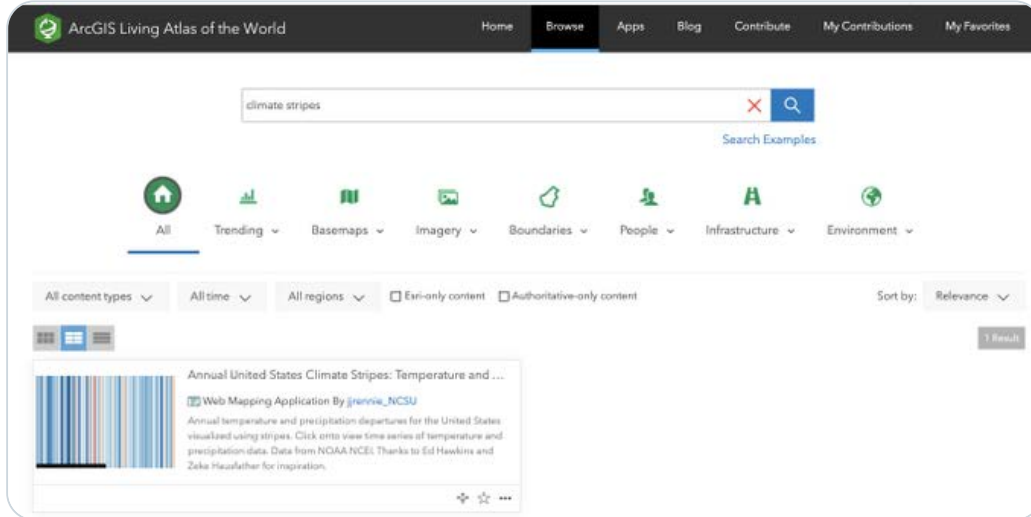
Jared Rennie
@jjrennie



Hello [#EsriUC](#)

Hope you enjoyed the [@KHayhoe](#) talk.

If you're interested in seeing how climate is affecting you **LOCALLY**, check out my [#climatestripes](#) Story Map, which is in the [@LivingAtlas](#) [@deepseadawn](#)



2:27 PM · Jul 16, 2020



22



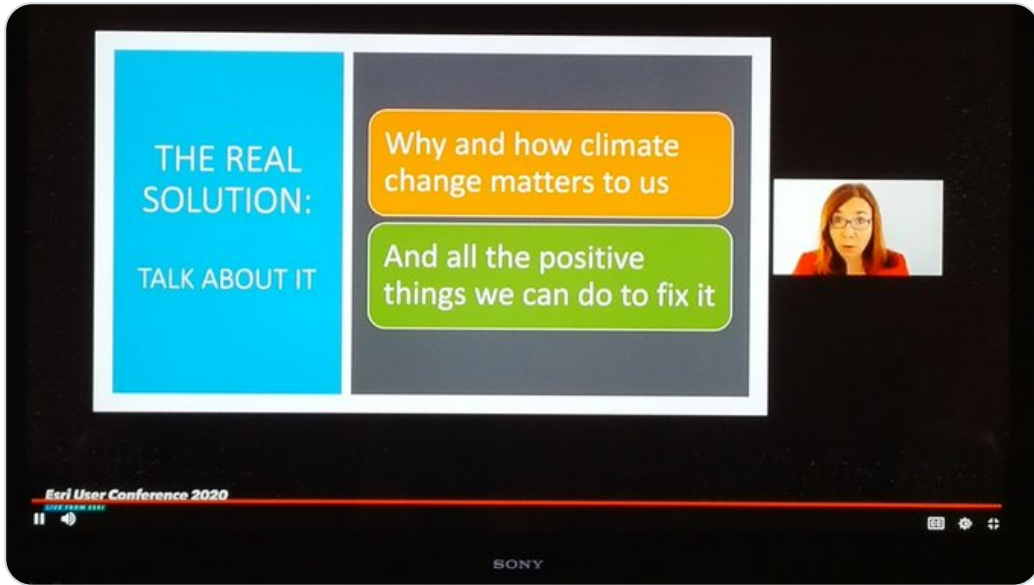
See Jared Rennie's other Tweets



Seth Neuman
@mapmansethn



Watching the @EsriUC Science Symposium with @KHayhoe and @deepseadawn. #EsriUC #geography #GIS #WreckEm



2:19 PM · Jul 16, 2020



4



See Seth Neuman's other Tweets



Jared Rennie
@jjrennie



Tough nut to crack as a climate scientist, pointed out by @KHayhoe

Why should people in the US care about arctic melting, if they don't live there.

Bringing it to the US, why should Iowa care about sea level rise?

#EsriUC @deepseadawn

LIVE

Estimated % of adults who think global warming will harm them personally (42%), 2019

Select Question: Global warming will harm me personally | Absolute Value

Click on map to select geography, or: Select a State | Select a County

Legend: National, States, Congressional Districts, Metro Areas, Counties

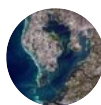
Scale: 100%, 95%, 90%, 85%, 80%, 75%, 70%, 65%, 60%, 55%, 50%, 45%, 40%, 35%, 30%, 25%, 20%, 15%, 10%, 5%, 0%

Esri User Conference 2020

2:07 PM · Jul 16, 2020



3 See Jared Rennie's other Tweets



CCRhodes
@CCheathamRhodes



Terrific Science Symposium with @deepseadawn and @KHayhoe AND Riley!! #EsriUC #EsriUC2020

1:50 PM · Jul 16, 2020



4 See CCRhodes's other Tweets



James Boxall
@JamesGIS



Listening to my hero [@KHayhoe](#) speaking during [#ScienceSymposium20](#) [#EsriUC](#) . Best speaker about climate change, policy and [#scicomms](#) (engaging live interactive polling with audience! very cool!)
[@GISandScience](#) Huge thanks my other hero to [@deepseadawn](#) for being host!

1:49 PM · Jul 16, 2020



♡ 13 👤 See James Boxall's other Tweets



Shannon White
@shannonhwhite



[@deepseadawn](#) shares that she and keynote Prof. Katharine Hayhoe were spotlighted in the film Let Science Speak. See the videos at: letsciencespeak.com
[#esriuc](#)



Let Science Speak
Defending America's Environmental Scientists. [#LetScienceSpeak](#)
letsciencespeak.com

1:31 PM · Jul 16, 2020



♡ 4 👤 See Shannon White's other Tweets



Nicole Grams-Herzog

@NicoleGramsH



I feel so lucky to have @deepseadawn as our Chief Scientist and to work for @Esri 🚢 🌙 ⚡ #EsriUC



James Boxall

@JamesGIS



Wonderful (ok, amazing) resource "Open Science" via @GISandScience @esri Thanks @deepseadawn



Science at Esri | Connecting GIS to Scientific Research

Find out how Esri supports and actively participates in the scientific community, using GIS to contribute to research and evolving ArcGIS ...

🔗 esri.com

1:25 PM · Jul 16, 2020



3



See James Boxall's other Tweets



Gary Kelner, M.S.

@GaryKelner



Drinking cold brew coffee getting ready for the Science Symposium with [@deepseadawn](#) and [@KHayhoe](#) [@EsriUC](#) [@GISandScience](#) [#esriuc2020](#) [#EsriUC](#)

12:58 PM · Jul 16, 2020



See Gary Kelner, M.S.'s other Tweets



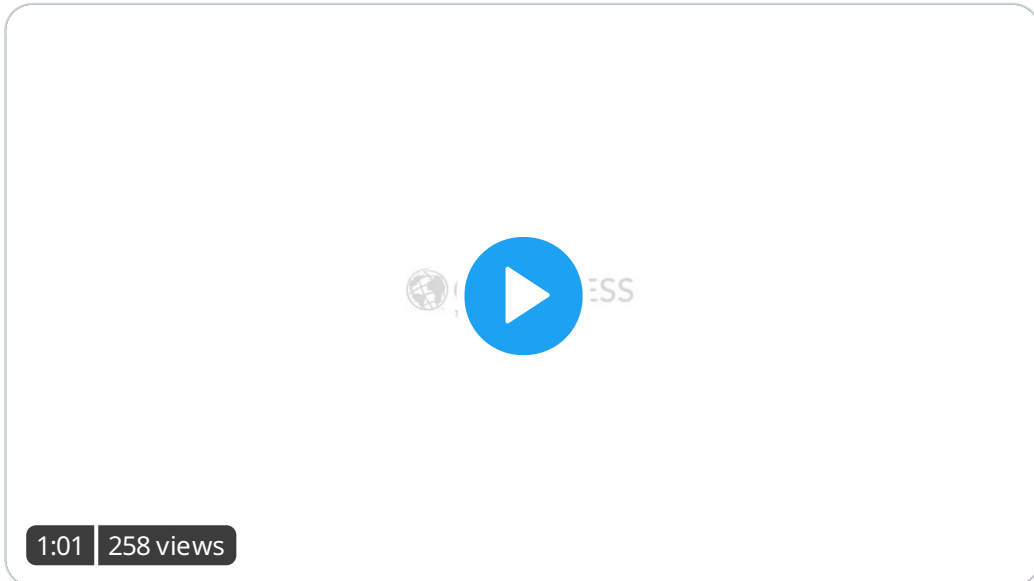
Esri Press

@EsriPress



Are you attending the Esri Science Symposium tomorrow? Catch our interview with [@deepseadawn](#) & [@GeoHarder](#), co-editors of the "GIS for Science" series (including the new Vol. 2!) & learn about why [#GIS](#) in science is essential.

ow.ly/gruA50Azevf
[#EsriUC](#) [@GISandScience](#)



1:01 | 258 views

11:00 PM · Jul 15, 2020





GIS and Science @GISandScience · Jul 15, 2020



We can't wait to welcome all of you to the Sciences Symposium from Esri #uc2020 ow.ly/qBXR50AxmVp Symposium begins at 6:15 a.m. PDT on Thurs. 7/16. Hear from @DeepseaDawn and Katharine Hayhoe from the Climate Center at Texas Tech.



2020 Esri User Conference: July 13-16 | Joi...
Join us virtually July 13-16, 2020, for the world's largest GIS conference. Attend virtu...
uc2020.esri.com



Hali Rederer
@its_outta_here

Early but attending anyway.



GIF

7:14 PM · Jul 15, 2020



2



See Hali Rederer's other Tweets