



# OGC Collaborative Platform Undercover

*AGU Fall Meeting 2012*

*Dec 7, 2012*

Greg Buehler; **David Arctur**; Luis E. Bermudez

# Open Geospatial Consortium



475 volunteer organizations

4307 Users

60 Standards



# OGC's Approach to Advancing Interoperability



- **Interoperability Program (IP)** - a global, hands-on rapid prototyping and testing program designed to accelerate interface development and validation, and bring interoperability to the market

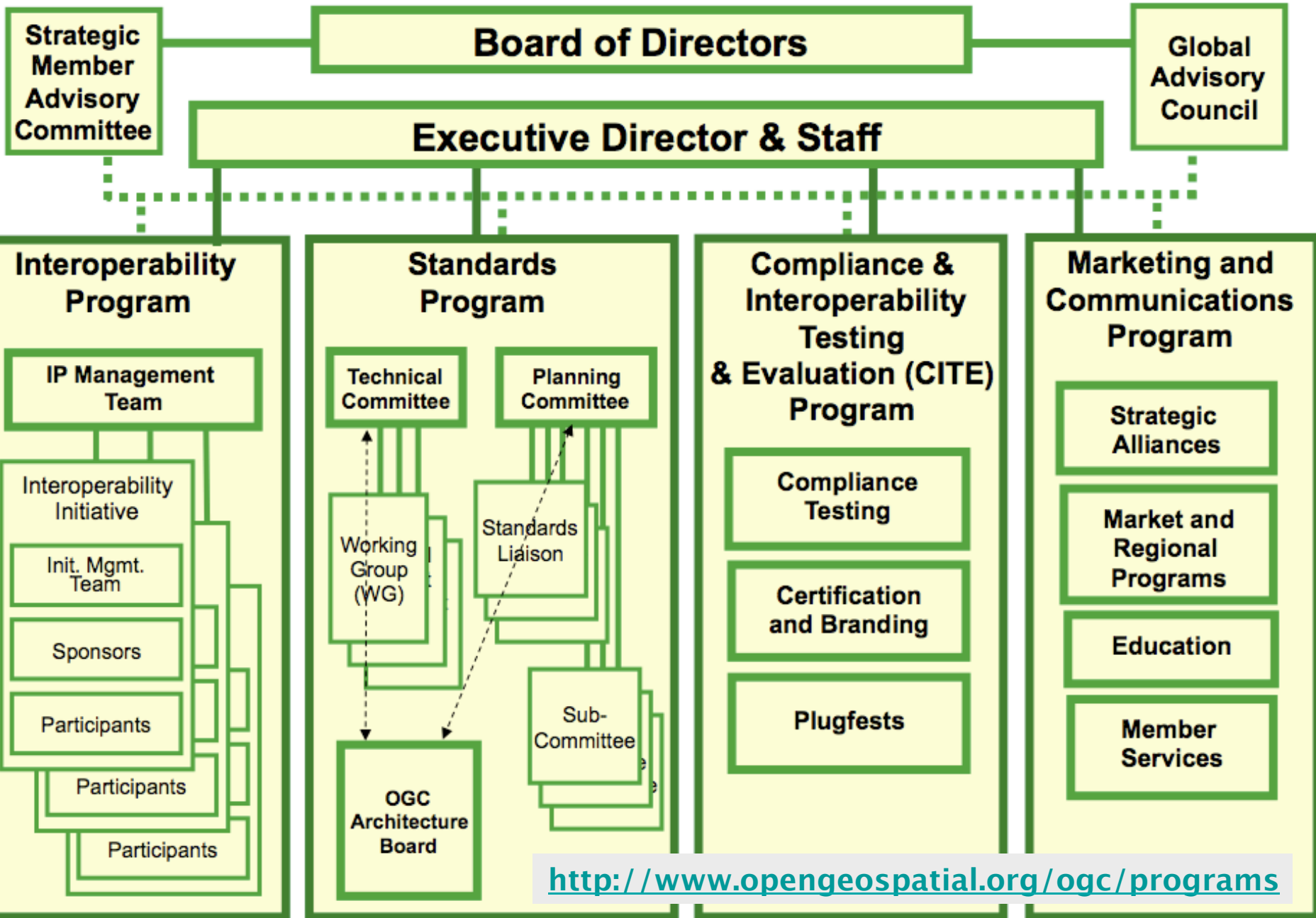
Demo & Reports



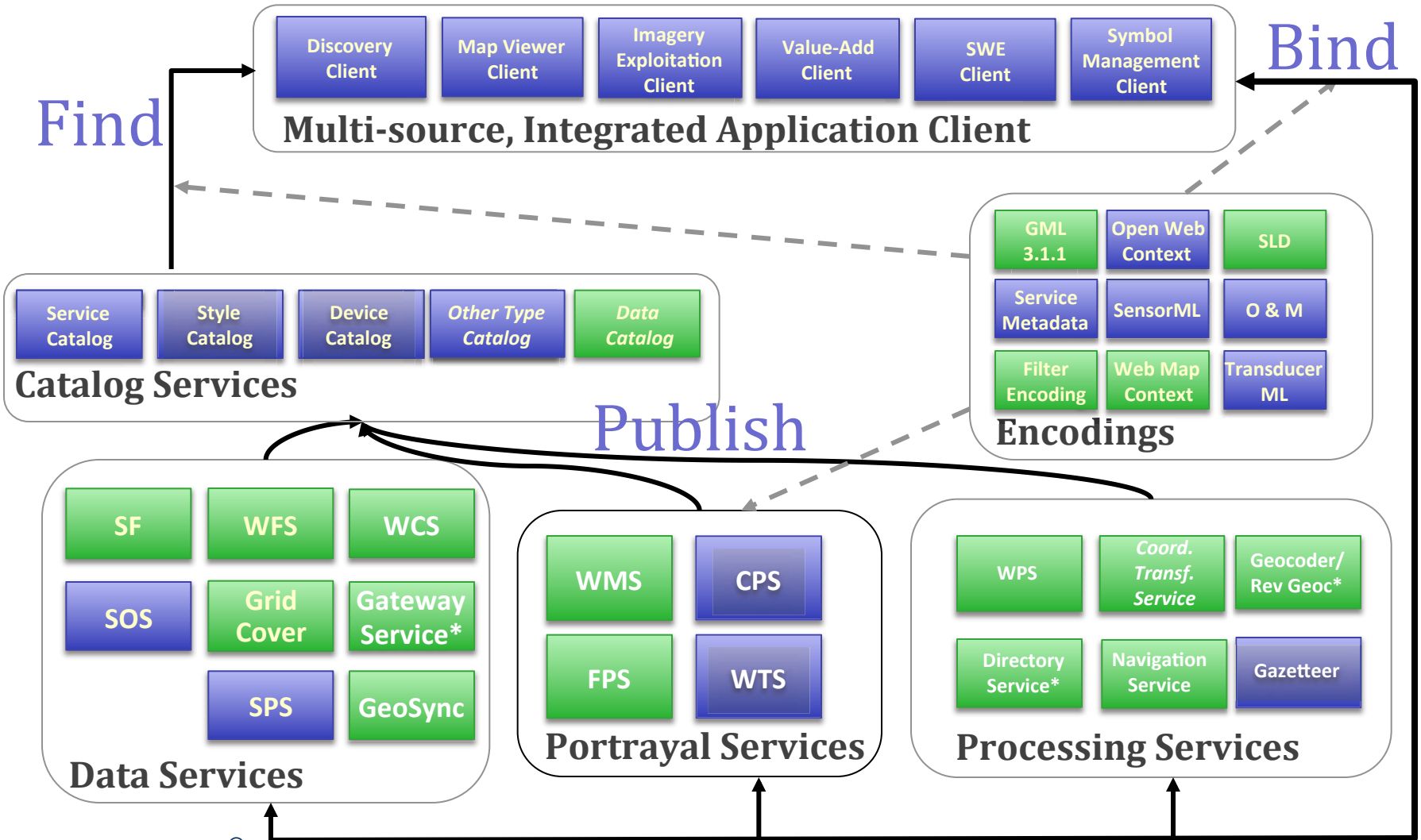
- **Standards Program** – Consensus standards process similar to other Industry consortia, eg, World Wide Web Consortium [W3C]
- **Compliance Program** – allows organizations that implement an OGC standard to test their implementations and get OGC certification
- **Marketing and Communications Program** – international outreach through education and training, encourage take up of OGC specifications, business development, communications programs



# OGC Organization Structure



# A Web Services Framework of Geoprocessing Standards



# Approved OGC Specifications (partial list)



- **Tightly coupled**
  - Simple Feature Access – OLE, SQL, CORBA {ISO}
  - Grid Coverages
- **Web Services**
  - Web Map Service (WMS) {ISO}
  - Web Feature Service (WFS) {ISO}
  - Web Coverage Service (WCS)
  - Catalog Services for the Web (CS/W)
  - Coordinate Transformation
- **XML Encodings**
  - Geography Markup Language (GML) {ISO}
  - KML
  - Web Map Context
- **Sensor Web Enablement**
  - SensorML
  - TransducerML
  - Sensor Observation Service (SOS)
  - Sensor Planning Service (SPS)
  - Sensor Alert Service (SAS)
- **Open Location Services (OpenLS) {ISO}**

Available free of charge at  
<http://opengeospatial.org/standards>

# The OGC Interoperability Program: *Technology Incubator*



- Global, innovative, collaborative, hands-on engineering and testing program to draft and test and validate specifications for consideration by OGC Technical Committee
- Delivers:
  - **candidate specifications** for the Specification Development Process
  - **product implementations** that use these candidate standards
  - **demonstrated capability** achieved through comprehensive testing, validation and public demonstrations based on real work business cases.
- Sponsors and Participants work together.
  - Sponsors provide requirements, **business cases** and funding
  - Participants work with sponsors to define and refine OGC interface specifications to solve interoperability problems



# Multipurpose, Interdisciplinary Projects

OGC®

Making location count.



## OWS-8 Demonstration

### Introduction

Sponsors

Participating Developers

Milestone Schedule

Demonstration Scenarios

Deliverables

Activity Threads

Aviation

Observation Fusion: Earth

Observation Coverages

Cross-Community  
Interoperability

Geosynchronization and  
Bulk Geodata Transfer

Observation Fusion:  
Moving-Object Tracking

## OGC Web Services Testbed, Phase 8 (OWS-8) Demonstrations

**OWS-8**

myogc.org

- SEMANTIC MEDIATION
- GEODATA BULK TRANSFER
- FIELD/MOBILE UPDATES & SYNC
- MOVING-VEHICLE TRACKING
- EARTH OBSERVATION COVERAGES
- AVIATION & WEATHER INFORMATION

<http://www.opengeospatial.org/pub/www/ows8/index.html>

OGC®



# OGC's Web Portal: Enabling Collaboration

---



- **Public site**
  - Standards search and download
  - Organization and outreach
  - Policies and procedures
- **Members' Portal and Twiki**
  - User access management
  - Working Group administration
  - Project documents management
  - Standards adoption workflow
  - Event calendar & resources  
(telecon, webex hosting)
- **Standards Dev Support**
  - Pending documents tracking
  - Vote tracking
  - Standards software test and bug tracking
  - Automated certification
  - Community feedback and public change requests



## Geospatial and location standards for:

- Aviation
- Built Environment & 3D
- Business Intelligence
- Defense & Intelligence
- Emergency Response & Disaster Management
- Geosciences & Environment
- Government & Spatial Data Infrastructure
- Mobile Internet & Location Services
- Sensor Webs
- University & Research



# OGC Members Portal: Making It Work

OGC Portal v1.6.0 Logged in as David Arctur

Main Projects Files Calendar Tasks Tickets Users Help My Account OGC Home Logout

## OGC Portal Main (Members Only)

Project Quick Selector - begin typing or use dropdown ->

My Today News & Events Pending Documents Historical Voting / IPR Meetings Member Resources Observer Agreement

### Scheduled Events - Day View

November 2012 **Tuesday November 20th, 2012**

Expand All Details

- All Day Event : GEO Plenary, AIP side event
- All Day Event : Quest - Smart Energy in Cold Climates
- 10:00 AM - 11:00 AM [EST] : Met Ocean DWG

Show Day's Reservations Add Event

2012-11-20 = Today's Date  
2012-11-20 = Selected Date

Visit [Calendar Module](#) for more options or to create events.  
System Time: 2012-11-20T17:06:16-05:00

### Artifact Watch

Related Project	Type	Artifact Name	Details	Action	Last Modified
OWS-9 GPS Task	Folder	Demonstration Files		created	2012/11/20 17:03:03 EST
CHISP-1	Folder	CHISP-1 Architecture and Use Cases - Kickoff		created	2012/11/20 13:51:57 EST
CHISP-1	Folder	CHISP-1 Kickoff Agenda/Schedule		versioned	2012/11/20 13:50:23 EST
CHISP-1	Folder	CHISP-1 Architecture and Use Cases - Kickoff		created	2012/11/20 13:40:40 EST
CHISP-1	Folder	Architecture, Scenarios and Use Cases		updated	2012/11/20 13:39:06 EST
CHISP-1	Folder	pre-RFQ material		updated	2012/11/20 13:38:01 EST
CHISP-1	Folder	CHISP-1 Slides on Use Cases - 2 Apr 2012		updated	2012/11/20 13:36:45 EST
CHISP-1	Folder	CHISP-1 Kickoff - Closing Plenary		created	2012/11/20 13:33:37 EST

### Active Project Voting

#### (1) OGC Architecture Board - OAB

Vote Item	Your Vote Status		Cast Vote(s)	Stats
	Status	Items Cast		
Approve WaterML...	-	-	-	

#### (1) OGC TC/PC Meetings

Vote Item	Your Vote Status		Cast Vote(s)	Stats
	Status	Items Cast		
Attendance at U...	Not Started	7	0	

#### (6) Technical Committee

Vote Item	Your Vote Status		Cast Vote(s)	Stats
	Status	Items Cast		
To Approve - Na...	-	-	-	
Approve WAMI Se...	-	-	-	
Modeling an App...	-	-	-	
To Approve "CF-...	-	-	-	
*ON HOLD - due ...	-	-	-	
To Approve rele...	-	-	-	

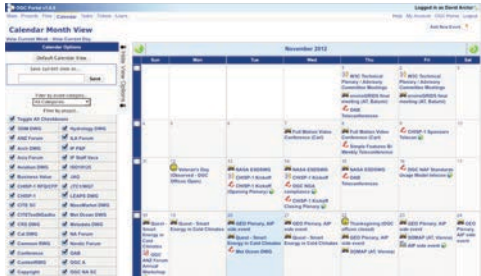
Some votes may have restricted access.

### Assigned Actions

# OGC Members Portal: Key Tools



## Meetings Calendar



## Users Database

User Name	Email	Phone	Organization	Role Type
...	...	...	...	...

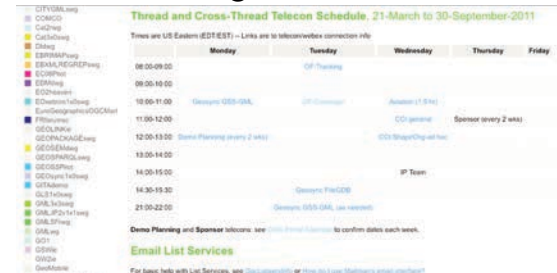
## My Tasks

Task Name	Status	Due Date
...	...	...

## Project Contacts - Files - Tasks



## Project Twiki



## Portal Search

Search Results for GML 3.2.1 Application Schema  
 Version: 3  
 Created: 2009-11-09 13:31:22  
 Updated: 2010-02-27 18:29:27  
 Uploaded by: Admin, OGC Portal

## Pending Documents

Doc Number	Title	Status
...	...	...

## Standards Voting Status

Doc No.	Doc Title	Doc Status	Doc Type	Doc Category	Doc Status	Doc Type	Doc Category
...	...	...	...	...	...	...	...



# Meetings Calendar with telecon & webex scheduling



OGC Portal v1.6.0 Logged in as David Arctur

Main Projects Files **Calendar** Tasks Tickets Users Help My Account OGC Home Logout

## Calendar Month View

View Current Week : View Current Day Add New Event

**Calendar Options**

Default Calendar View

Save current view as...  
 Save

Filter by event category...  
All Categories

Filter by project...

Toggle All Checkboxes

<input checked="" type="checkbox"/> 3DIM DWG	<input checked="" type="checkbox"/> Hydrology DWG
<input checked="" type="checkbox"/> ANZ Forum	<input checked="" type="checkbox"/> ILA Forum
<input checked="" type="checkbox"/> Arch DWG	<input checked="" type="checkbox"/> IP P&P
<input checked="" type="checkbox"/> Asia Forum	<input checked="" type="checkbox"/> IP Staff Vaca
<input checked="" type="checkbox"/> Aviation DWG	<input checked="" type="checkbox"/> ISO19125
<input checked="" type="checkbox"/> Business Value	<input checked="" type="checkbox"/> JAG
<input checked="" type="checkbox"/> CHISP-1 RFQ/CFP	<input checked="" type="checkbox"/> JTC1/WG7
<input checked="" type="checkbox"/> CHISP-1	<input checked="" type="checkbox"/> LEAPS DWG
<input checked="" type="checkbox"/> CITE SC	<input checked="" type="checkbox"/> MassMarket DWG
<input checked="" type="checkbox"/> CITETestNGadho	<input checked="" type="checkbox"/> Met Ocean DWG
<input checked="" type="checkbox"/> CRS DWG	<input checked="" type="checkbox"/> Metadata DWG
<input checked="" type="checkbox"/> Cat DWG	<input checked="" type="checkbox"/> NA Forum
<input checked="" type="checkbox"/> Common RWG	<input checked="" type="checkbox"/> Nordic Forum
<input checked="" type="checkbox"/> Conference	<input checked="" type="checkbox"/> OAB
<input checked="" type="checkbox"/> ContextRWG	<input checked="" type="checkbox"/> OGC A
<input checked="" type="checkbox"/> Copyright	<input checked="" type="checkbox"/> OGC NA SC

November 2012

Sun	Mon	Tue	Wed	Thu	Fri	Sat
				1 W3C Technical Plenary / Advisory Committee Meetings enviroGRIDS final meeting (AT, Batumi) OAB Teleconferences	2 W3C Technical Plenary / Advisory Committee Meetings enviroGRIDS final meeting (AT, Batumi)	3
4	5	6	7 Full Motion Video Conference (Carl)	8 Full Motion Video Conference (Carl) Simple Features Bi Weekly Teleconference	9 CHISP-1 Sponsors Telecon	10
11	12 Veteran's Day (Observed - OGC Offices Open)	13 NASA ESDSWG CHISP-1 Kickoff CHISP-1 Kickoff (Opening Plenary)	14 NASA ESDSWG CHISP-1 Kickoff OGC NGA compliance CHISP-1 Kickoff Closing Plenary	15 NASA ESDSWG OAB Teleconferences	16 OGC NAF Standards Usage Model telecon	17
18 Quest - Smart Energy in Cold Climates OGC ANZ Forum Annual Workshop	19 Quest - Smart Energy in Cold Climates	20 GEO Plenary, AIP side event Quest - Smart Energy in Cold Climates Met Ocean DWG	21 GEO Plenary, AIP side event Quest - Smart Energy in Cold Climates	22 Thanksgiving (OGC offices closed) GEO Plenary, AIP side event SOMAP (AT, Vienna)	23 GEO Plenary, AIP side event SOMAP (AT, Vienna) AIP side event	24 GEO Plenary, AIP side event

# Project Contacts, Files & Tasks



OGC Portal v1.6.0 Logged in as David Arctur

Main **Projects** Files Calendar Tasks Tickets Users Help My Account OGC Home Logout

## Geography Markup Language (GML) DWG

Geography Markup Language (GML) DWG

Return to List

General **Contacts** **Files** Tasks Actions

Home Parent Search Move Items New Dir New File New Link Refresh

Location: Geography Markup Language (GML) DWG\*

Title	Creator	Public	Options	Ver	Size	Last Update	Type	All
2004 June Meeting (2 items)				-		2004-06-15 12:38:22	Directory	<input type="checkbox"/>
Annotation (5 items)				-		2004-06-17 10:42:23	Directory	<input type="checkbox"/>
Examples (4 items)				-		2004-06-17 10:46:37	Directory	<input type="checkbox"/>
GML Profiles & Application Schemas (2 items)				-		2005-06-15 11:10:25	Directory	<input type="checkbox"/>
GML Schemas (5 items)				-		2004-06-17 10:44:17	Directory	<input type="checkbox"/>
GML Support (3 items)				-		2005-04-20 16:25:55	Directory	<input type="checkbox"/>

	Feb	Mar	Apr	May	Jun	Jul	Aug	Sep	Oct	Nov	Dec	Jan	Feb	Mar	Apr
GML Support															
RFC - Level 0 Profile of GML3 for WFS															
GML v3.1 via GML RWG															
GML Query Data Model															
GML Data Server															
GML/JPEG 2000															
GML and Ontology															

# OGC Project Twiki



## GMLwg

OGC | Portal | Wiki  
OGC Network | Public Wiki

### GMLwg Web

GMLwg Web Home  
Changes  
Index  
Search

### Webs

ARCHdvw  
ARML2x0swg  
CATEBRIMrvg  
CATwg  
CGDIPilot  
CHISP1  
CIMxebri1x0swg  
CITEsc  
CITYGMLswg  
COMCO  
Cat2rvg  
Cat3x0swg  
Dldwg

You are here: OGC Member Wiki > GMLwg Web > WebHome (25 Jul 2011, SimonCox)

[Edit](#) [Attach](#)

## GML WG TWiki Web

Welcome to the home of GML WG TWiki Web, a web-based collaboration area for:

- [GMLProfilesApplicationSchemasAndExamples](#)
- [IdentifiersAndNames](#)

## Message to new TWiki users

Please [Register and Create](#) your user/preferences page and then visit [Welcome Guest](#) to get a brief introduction of how the OGC Member Wiki works. In order to get regular notifications of changes to the TWiki, please add your name to the [WebNotify](#) page.

## Site Tools of the GMLwg Web

- [Search](#) (More options in [WebSearch](#))
- [WebChanges](#): Display recent changes to the GMLwg web
- [WebIndex](#): List all GMLwg topics in alphabetical order. See also the faster [WebTopicList](#)
- [WebNotify](#): Subscribe to an e-mail alert sent when something changes in the GMLwg web
- [WebStatistics](#): View access statistics of the GMLwg web
- [WebPreferences](#): Preferences of the GMLwg web ([DefaultPreferences](#) has site-wide preferences)

# Portal Search



Go Back

**File / Directory Search**  
Conducting Site-Wide Search

Title Contains:

Creator Contains:

Description Contains:

OGC #:

Artifact #:

Search Directories:  Include  Exclude  Only Directories

[Click for Advanced Search](#)

Directory Path	Title	OGC #	Author	Info	Ver	Class	Status
Pending OGC Documents/	CSW ISO Profile should use GML 3.2.1	10-012	Simon Cox		1	Change Request	Pending
Technical Committee/Archived OGC Documents/Archives 2010/	GML 3.2.1 Application Schema for WCS 2.0	09-146	Peter Baumann		2	Engineering Specification	Tabled
Technical Committee/Approved OGC standards/Change Requests/	GML 3.2.1 change request - Add ReferenceableGridByTransformation	10-161	Arliss Whiteside		1	Change Request	Approved
Pending OGC Documents/	GML 3.2.1 change request - Add ReferenceableGridByTransformation	10-138	Arliss Whiteside, Max Martinez		1	Change Request	Pending
Pending OGC Documents/	GML 3.2.1 change request - Change association to GeneralParameterValue	08-150r3	Arliss Whiteside		1	Change Request	Pending
Pending OGC Documents/	GML 3.2.1 change request - Change association to GeneralParameterValue	08-150r1	Arliss Whiteside		1	Change Request	Pending
Pending OGC Documents/	GML 3.2.1 change request - Change association to GeneralParameterValue	08-150r2	Arliss Whiteside		1	Change Request	Pending

**Details of GML 3.2.1 Application Schema**

[Close Window](#)

**Current Version**

**GML 3.2.1 Application Schema for WCS 2.0**

Version: **2**

Creator: **Peter Baumann**

Artifact Class: **Engineering Specification**

Artifact Status: **Tabled**

Created: 2009-11-08 13:31:20

Updated: 2010-10-27 18:25:27

Size: 175 KB

Uploaded By: Admin, OGC Portal

**Alternate Formats:** pdf

---

**Previous Versions**

**GML 3.2.1 Application Schema for WCS 2.0**

Version: **1**

Creator: **Peter Baumann**

Artifact Class: **Engineering Specification**

Artifact Status: **Tabled**

Size: 170 KB

Created: 2009-11-08 13::

Updated: 2010-03-15 15::

Uploaded By: Baumann, Peter



# Pending Docs / Standards Voting



OGC Portal v1.6.0 Logged in as David Arctur

Main Projects Files Calendar Tasks Tickets Users Help My Account OGC Home Logout

**OGC Portal Main (Members Only)**

Project Quick Selector - begin typing or use dropdown ->

My Today News & Events **Pending Documents** Historical Voting / IPR Meetings Member Resources Observer Agreement

**OGC Pending Documents**

List Pending Documents Reserved Doc Numbers Request Doc Number Document Templates Instructions

Doc Number	Document (click title)
12-143	Draft GeoSciML SWG Charter
12-126	GW2/E Activity Plan
12-141	C2GIE Activity Plan
11-135r1	OGC@ Name Type Specific
12-135	[GeoPackage SWG] Remove Metadata
12-134	[GeoPackage] Missing Column create statement
12-138	Land Development SWG Draft
12-137	3D Portrayal V1.0 Standards
12-132r1	ARML 2.0 Specification
12-133	Web Services Facade for OGC
12-109r3	GeoPackage Standards Work
12-132	ARML 2.0 Specification
12-131	[WFS/FES] A Semantic Meta

OGC Portal v1.6.0 Logged in as David Arctur

Main Projects Files Calendar Tasks Tickets Users Help My Account OGC Home Logout

**Technical Committee**

Technical Committee

Return to List

General Contacts Files Tasks Actions **Project Voting**

Active Voting **Historical Voting**

**Historical Voting Table**

Vote / Vote Ballot	Start	End	Your Vote History Status Items Cast	Vote Info	Overall Status
To Approve "Web Coverage Service 2.0 Interface Standard - KVP Protocol Binding Extension" [09-147r3] as a corrigendum.	2012-08-15	2012-09-14	- - -	Stats	Passed
To Approve OGC Document Number 08-134r9 "Compliance Testing Program Policies and Procedures" as an official OGC policy and procedure document.	2012-07-10	2012-10-09	- - -	Stats	Passed
NetCDF Enhanced Data Model Extension Encoding Standard [11-038r1] as a new OGC standard	2012-07-09	2012-09-07	- - -	Stats	Passed
Approve "Semantic annotations in OGC standards" [08-167r2] as a new OGC Best Practice.	2012-04-25	2012-09-07	- - -	Stats	Passed
To approve "WaterML 2.0: Part 1 Time Series" [10-126r2] as a new OGC standard	2012-04-18	2012-06-17	- - -	Stats	Passed
GeoSPARQ - OGC 11-052r4	2012-02-07	2012-04-07	- - -	Stats	Passed
Sensor Observation Service (SOS) 2.0 - OGC 12-006 as a new OGC standard.	2012-01-25	2012-03-25	- - -	Stats	Passed
Cataloguing Earth Observation Products for ebXML Registry Information Model 3.0 based Catalogues	2012-01-18	2012-02-17	- - -	Stats	Passed
CityGML 1.1 [11-178] as a new OGC standard	2011-12-07	2012-02-05	- - -	Stats	Passed
Gazetteer Service - Application Profile of the Web Feature Service Best Practice	2011-12-01	2012-01-14	- - -	Stats	Passed
OWS-8 Engineering Report Approval	2011-11-03	2011-12-15	- - -	Stats	Passed
To Approve "OGC Geography Markup Language version 3.3" [10-129r1] as a new OGC standard .	2011-11-03	2012-01-02	- - -	Stats	Passed
Documentation Retirement from Boulder TC	2011-10-07	2011-11-06	- - -	Stats	Passed
To Approve "PUCK Protocol Standard" [09-127r1] as a new OGC standard	2011-09-15	2011-11-28	- - -	Stats	Passed
To Approve "Earth Observation Metadata profile of Observations & Measurements" [10-157r2] as a new OGC standard	2011-09-07	2011-11-06	- - -	Stats	Passed

# Member Profile: Email lists & other functions

## User Profile:

View Users List : Edit Profile

[Account Profile](#) [Artifact Watches](#) [Project Access](#) [Email Subscriptions](#) [Event Registration](#) [Managed Projects](#)

Manage Current Subscriptions [Subscribe to Additional Lists](#)

Private **Member** Public Inactive Other

### Member Lists:

These lists are available based upon your membership status. You have the ability to subscribe or unsubscribe to these lists, but still may require you to accept an email confirmation that you want to join, and approval by the list administrator or moderator.

Note	Explanation
Confirm	You must confirm your subscription request by replying to an email
Approve	Your subscription request must be approved by a list administrator

Subscribable Lists			
Subscribe	List	Access Granted Via	Notes
<a href="#">Click to Subscribe</a>	3DIM-Registries	3DIM DWG	Confirm & Approve
<a href="#">Click to Subscribe</a>	Anz.forum	Australia and New Zealand (ANZ) Forum	Confirm & Approve
<a href="#">Click to Subscribe</a>	Architecture.dwg	Architecture DWG	Confirm & Approve
<a href="#">Click to Subscribe</a>	Asia.Forum	Asia Forum	Confirm & Approve
<a href="#">Click to Subscribe</a>	Au.sig	OGC Australasia	Confirm & Approve
<a href="#">Click to Subscribe</a>	CAT.ebRim.rwg	Cat ebRim AP RWG	Confirm & Approve
<a href="#">Click to Subscribe</a>	CITE.SC	Compliance Interoperability & Testing Evaluation (CITE) SC	Confirm & Approve
<a href="#">Click to Subscribe</a>	CityGML-1.0.SWG	CityGML 1.0 SWG	Confirm & Approve
<a href="#">Click to Subscribe</a>	Context.rwg	Context RWG	Confirm & Approve
<a href="#">Click to Subscribe</a>	Coverages.wg	Coverages DWG	Confirm & Approve
<a href="#">Click to Subscribe</a>	DI.WG	Defense and Intelligence DWG	Confirm & Approve
<a href="#">Click to Subscribe</a>	docteam	Document SC	Confirm & Approve
<a href="#">Click to Subscribe</a>	Europe.Forum	Europe Forum	Confirm & Approve
<a href="#">Click to Subscribe</a>	Feature.WG	Feature WG	Confirm & Approve
<a href="#">Click to Subscribe</a>	France.Forum	France Forum	Confirm & Approve
<a href="#">Click to Subscribe</a>	GeoAPI.wg	GeoAPI WG	Confirm & Approve
<a href="#">Click to Subscribe</a>	GeoSemWeb	Geosemantics DWG	Confirm & Approve
<a href="#">Click to Subscribe</a>	IGS.rwg	Image Geopositioning Service (IGS) RWG	Confirm & Approve
<a href="#">Click to Subscribe</a>	LEAPS.DWG	Law Enforcement And Public Safety DWG	Confirm & Approve
<a href="#">Click to Subscribe</a>	Nordic.Forum	Nordic Forum	Confirm & Approve

# Other Member Resources

## Membership Resources

### 1) Links to OGC Public Website

- OGC CITE Compliance Testing Portal
- OGC Compliance Testing
- OGC Member List
- OGC On-line Requirements Form
- OGC Policies
- OGC Public On-line Change Request Form
- OGC Registered Product Listings
- OGC Standards

### 2) Quick Portal Links

- Add Yourself to an Email List
- Document Templates Page
- Find a Portal User
- Information For New Members
- Observer Agreements
- Submitting a Document for Consideration
- TC Document Archives
- TC Pending Documents Listing
- Working Group & SIG Pages

### 3) Speaker Bureau

- Speaker's Bureau Public web page
- Submit a Conference for OGC to support

### 4) Reference Documentation

- International Time Zones
- OGC Intellectual Property Rights Policies and Procedures
- OGC Technical Committee Policies and Procedures
- Teleconference Line Information

### 5) Other Resources

#### Membership Outreach Kit

#### Brochure Inserts

- Defense & Intelligence
- Disaster Management
- Emergency Management
- Environment & Natural Resources
- Interoperability Program Overview
- SDI
- Unique Benefits

- Markets and Technologies
- OGC Logo Index Page
- OGC Membership Level Icons

- OGC TC Proxy
- Training Material

#### Web Collaboration Resources

- OGC's Acrobat Connect Pro Server
- OGC's WebEx Server

Please contact us if you would like to request links on this page [portaladmin@opengeospatial.org](mailto:portaladmin@opengeospatial.org)

# OGC Public References

---



- Adopted Standards
  - <http://www.opengeospatial.org/standards>
- OGC Reference Model
  - <http://www.opengeospatial.org/standards/orm>
- OGC Web Services Testbed Initiatives
  - <http://www.opengeospatial.org/projects/initiatives>
- Compliance Testing and Certification
  - <http://www.opengeospatial.org/compliance>
- List of Registered Products using OGC Standards
  - <http://www.opengeospatial.org/resource>
- OGC Network – member-contributed OGC “encyclopedia”
  - <http://www.ogcnetwork.net>



*Comments welcome - Thank you!*

David Arctur [david.arctur@utexas.edu](mailto:david.arctur@utexas.edu)



Greg Buehler [gbuehler@opengeospatial.org](mailto:gbuehler@opengeospatial.org)

Luis Bermudez [lbermudez@opengeospatial.org](mailto:lbermudez@opengeospatial.org)